

Product datasheet for **RG202346**

LYRM4 (NM_020408) Human Tagged ORF Clone

Product data:

Product Type: Expression Plasmids
Product Name: LYRM4 (NM_020408) Human Tagged ORF Clone
Tag: TurboGFP
Symbol: LYRM4
Synonyms: C6orf149; CGI-203; COXPD19; ISD11
Mammalian Cell Selection: Neomycin
Vector: pCMV6-AC-GFP (PS100010)
E. coli Selection: Ampicillin (100 ug/mL)
ORF Nucleotide Sequence: >RG202346 representing NM_020408
Red=Cloning site Blue=ORF Green=Tags(s)

TTTTGTAAACGACTCACTATAGGGCGGCCGGAATTCGTCGACTGGATCCGGTACCGAGGAGATCTGCC
 GCCCGATCGCC

ATGGCAGCCTCCAGTCGCGCACAAGTGTTAGCTCTGTACCGGGCGATGCTGAGAGAGAGCAAGCGTTTCA
GCGCCTACAATTACAGAACATATGCTGTCAGGAGGATAAGAGATGCCTTCAGAGAAAATAAAAATGTAAA
GGATCCTGTAGAAATTCAAACCCTAGTGAATAAGCCAAGAGAGACCTTGGAGTAATTCGTCGACAGGTC
CACATTGGCCAAGTATTCAACTGACAAGCTGATCATTGAGAATCGAGACATGCCCAGGACC

ACGCGTACGCGGCCGCTCGAG - GFP Tag - GTTTAA

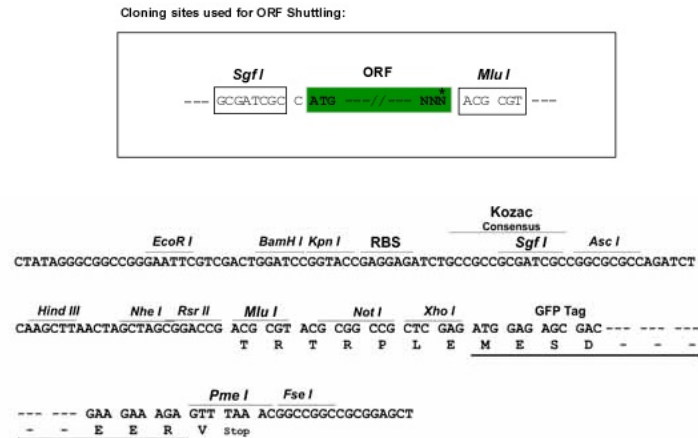
Protein Sequence: >RG202346 representing NM_020408
Red=Cloning site Green=Tags(s)
 MAASSRAQVLALYRAMLRRESKRFSAYNYRITYAVRRIRDAFRENKNVKDPVEIQTLVNKAKRDLGVIRRVQV
 HIGQLYSTDKLIIENRDMPRT

TRTRPLE - GFP Tag - V

Restriction Sites: SgfI-MluI


[View online »](#)

Cloning Scheme:



ACCN: NM_020408

ORF Size: 273 bp

OTI Disclaimer: The molecular sequence of this clone aligns with the gene accession number as a point of reference only. However, individual transcript sequences of the same gene can differ through naturally occurring variations (e.g. polymorphisms), each with its own valid existence. This clone is substantially in agreement with the reference, but a complete review of all prevailing variants is recommended prior to use. [More info](#)

OTI Annotation: This clone was engineered to express the complete ORF with an expression tag. Expression varies depending on the nature of the gene.

Components: The ORF clone is ion-exchange column purified and shipped in a 2D barcoded Matrix tube containing 10ug of transfection-ready, dried plasmid DNA (reconstitute with 100 ul of water).

Reconstitution Method:

1. Centrifuge at 5,000xg for 5min.
2. Carefully open the tube and add 100ul of sterile water to dissolve the DNA.
3. Close the tube and incubate for 10 minutes at room temperature.
4. Briefly vortex the tube and then do a quick spin (less than 5000xg) to concentrate the liquid at the bottom.
5. Store the suspended plasmid at -20°C. The DNA is stable for at least one year from date of shipping when stored at -20°C.

Note: Plasmids are not sterile. For experiments where strict sterility is required, filtration with 0.22um filter is required.

RefSeq: NM_020408.3, NP_065141.3

RefSeq Size: 1499 bp

RefSeq ORF: 276 bp

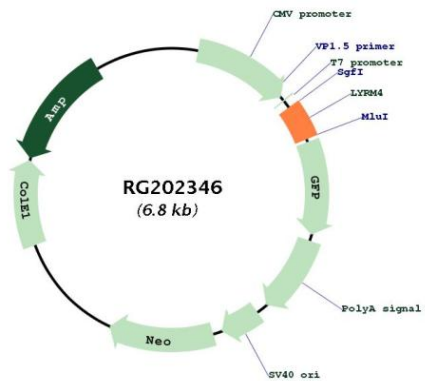
Locus ID: 57128

UniProt ID: Q9HD34

Cytogenetics: 6p25.1

Gene Summary: The protein encoded by this gene is found in both mitochondria and the nucleus, where it binds cysteine desulfurase and helps free inorganic sulfur for Fe/S clusters. Disruption of this gene negatively impacts mitochondrial and cytosolic iron homeostasis. [provided by RefSeq, Sep 2016]

Product images:



Circular map for RG202346