

Product datasheet for **RG202331**

MAGEH1 (NM_014061) Human Tagged ORF Clone

Product data:

Product Type:	Expression Plasmids
Product Name:	MAGEH1 (NM_014061) Human Tagged ORF Clone
Tag:	TurboGFP
Symbol:	MAGEH1
Synonyms:	APR-1; APR1; MAGEH
Mammalian Cell Selection:	Neomycin
Vector:	pCMV6-AC-GFP (PS100010)
E. coli Selection:	Ampicillin (100 ug/mL)
ORF Nucleotide Sequence:	>RG202331 representing NM_014061 Red=Cloning site Blue=ORF Green=Tags(s)

TTTTGTAATACGACTCACTATAGGGCGGCCGGAATTCGTCGACTGGATCCGGTACCGAGGAGATCTGCC
 GCC**CGATCGCC**

ATGCCTCGGGGACGAAAGAGTCGGCGCCGCGTAATGCGAGAGCCGAGAAGAGAACCGCAACAATCGCA
 AAATCCAGGCCTCAGAGGCCTCCGAGACCCCTATGGCCGCTCTGTGGTAGCGAGCACCCCGAAGACGA
 CCTGAGCGGCCCCGAGGAAGACCCGAGCACTCCAGAGGAGGCCTCTACCACCCCTGAAGAAGCCTCGAGC
 ACTGCCAAGCACAAAAGCCTTCAGTGCCCGGAGCAATTTTCAGGGCACCAAGAAAAGTCTCCTGATGT
 CTATATTAGCGCTCATCTTCATCATGGGCAACAGCGCCAAGGAAGCTCTGGTCTGAAAGTGCTGGGGAA
 GTTAGGAATGCAGCCTGGACGTCAGCACAGCATCTTTGGAGATCCGAAGAAGATCGTCACAGAAGAGTTT
 GTGCGCAGAGGGTACCTGATTTATAAACCGGTGCCCCGTAGCAGTCCGGTGGAGTATGAGTTCTTCTGGG
 GGCCCCGAGCACACGTGGAATCGAGCAAAGTGAAGTCATGCATTTTGTGGCAAGGGTTCGTAACCGATG
 CTCTAAAGACTGGCCTTGAATTATGACTGGGATTCGGACGATGATGCAGAGGTTGAGGCTATCCTCAAT
 TCAGGTGCTAGGGTTATTCCGCCCT

ACGCGTACGCGGCGCTCGAG - GFP Tag - GTTTAA


[View online »](#)

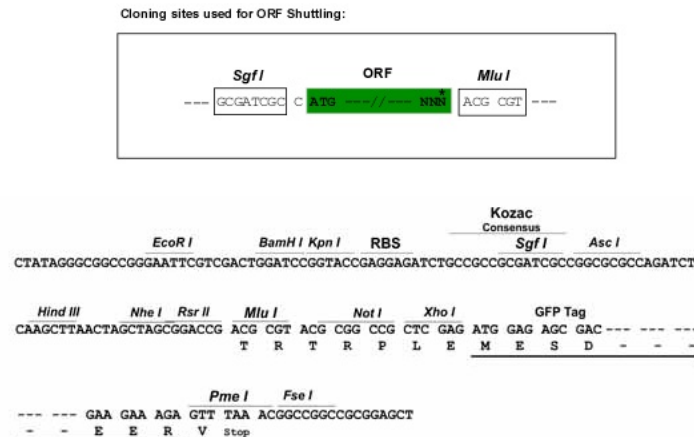
Protein Sequence: >RG202331 representing NM_014061
 Red=Cloning site Green=Tags(s)

MPRGRKSRRRRNARAAEENNRNRIQASEASETPMAASVVASTPEDDLSPPEEDPSTPEEASTTPEEASS
 TAQAQKPSVPRSNFQGTKSLLMSILALIFIMGNSAKEALVWVLGKLGMPGRQHSIFGDPKKIVTEEF
 VRRGYLIYKPVPRSSPVEYEFFWGPRAHVESKLVKMHFVARVRNRCSDWPCNYDWDSDDDAEVEAILN
 SGARGYSAP

TRTRPLE – GFP Tag – V

Restriction Sites: SgfI-MluI

Cloning Scheme:



ACCN: NM_014061

ORF Size: 657 bp

OTI Disclaimer: The molecular sequence of this clone aligns with the gene accession number as a point of reference only. However, individual transcript sequences of the same gene can differ through naturally occurring variations (e.g. polymorphisms), each with its own valid existence. This clone is substantially in agreement with the reference, but a complete review of all prevailing variants is recommended prior to use. [More info](#)

OTI Annotation: This clone was engineered to express the complete ORF with an expression tag. Expression varies depending on the nature of the gene.

Components: The ORF clone is ion-exchange column purified and shipped in a 2D barcoded Matrix tube containing 10ug of transfection-ready, dried plasmid DNA (reconstitute with 100 ul of water).

Reconstitution Method:

1. Centrifuge at 5,000xg for 5min.
2. Carefully open the tube and add 100ul of sterile water to dissolve the DNA.
3. Close the tube and incubate for 10 minutes at room temperature.
4. Briefly vortex the tube and then do a quick spin (less than 5000xg) to concentrate the liquid at the bottom.
5. Store the suspended plasmid at -20°C. The DNA is stable for at least one year from date of shipping when stored at -20°C.

Note: Plasmids are not sterile. For experiments where strict sterility is required, filtration with 0.22um filter is required.

RefSeq: [NM_014061.5](#)

RefSeq Size: 1475 bp

RefSeq ORF: 660 bp

Locus ID: 28986

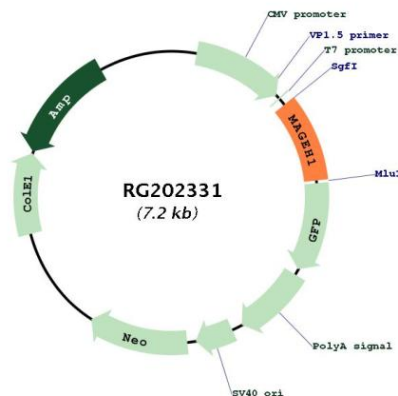
UniProt ID: [Q9H213](#)

Cytogenetics: Xp11.21

Protein Families: Transmembrane

Gene Summary: This gene belongs to the non-CT (non cancer/testis) subgroup of the melanoma-associated antigen (MAGE) superfamily. The encoded protein is likely associated with apoptosis, cell cycle arrest, growth inhibition or cell differentiation. The protein may be involved in the atRA (all-trans retinoic acid) signaling through the STAT1-alpha (signal transducer and activator of transcription 1-alpha) pathway. [provided by RefSeq, Aug 2013]

Product images:



Circular map for RG202331