

Product datasheet for **RG202321**

EDC3 (NM_025083) Human Tagged ORF Clone

Product data:

Product Type:	Expression Plasmids
Product Name:	EDC3 (NM_025083) Human Tagged ORF Clone
Tag:	TurboGFP
Symbol:	EDC3
Synonyms:	hYjeF_N2-15q23; LSM16; MRT50; YJDC; YJEFN2
Mammalian Cell Selection:	Neomycin
Vector:	pCMV6-AC-GFP (PS100010)
E. coli Selection:	Ampicillin (100 ug/mL)



[View online »](#)

ORF Nucleotide Sequence:

>RG202321 representing NM_025083
 Red=Cloning site Blue=ORF Green=Tags(s)

TTTTGTAATACGACTCACTATAGGGCGGCCGGAATTCGTCGACTGGATCCGGTACCGAGGAGATCTGCC
 GCC**CGCATCGCC**

ATGGCTACAGATTGGCTGGGAAGTATTGTGTCCATCAATTGTGGAGATAGCTTGGGTGTCTATCAGGGAA
 GAGTGTACAGTGTGGATCAGGTCAGCCAGACCATTCTCTCACCCGGCCTTCCATAATGGAGTGAAGTG
 TCTTGTCCAGAAGTACCTTCAGGGCAGGTGACATTACGGAGTTAAAAATTCTGGAGATACCAGGACCT
 GGAGACAACCAACATTTTGGAGACCTTCATCAAACAGAATTAGGCCCTCTGGTGTGGCTGCCAAGTGG
 GCATCAATCAGAATGGCACAGGCAAGTTTGTCAAGAAGCCAGCCTCTCCAGCAGTGCCCTCAGAATAT
 CCCTAAGAGGACAGATGTGAAGAGCCAGGATGTTGCCGTTTCCCGCAGCAGCAACAGTGTCAAAGAGC
 TATGTCGACAGGCACATGGAATCCTTGAGTCAGTCCAAAAGTTCCGTCGTCGGCACAACCTCTGGTCAT
 CTAGTAGCAGGCCACCAATCAGGCACTCCCAAGAAAAGTGGTTTAAAGAATGGCCAGATGAAGAATAA
 AGATGACGAGTGTTCGGGGATGATATTGAGGAGATCCCAGACACAGATTTTGATTTTGAAGGGAACCTG
 GCTCTTTTTGACAAGGCAGCTGTGTTTGAAGGAGATTGATACCTATGAAAGGAGAAGTGGTACCCGTTCCC
 GGGCATCCCAAATGAAAGGCCACTCGGTACCGCATGATGAGAACATCTTGGAGTCCGAGCCATTGT
 CTATCGACGGATCATAGTGCCCCACAACGTGAGCAAGGAGTTCTGCACGGACTCTGGCCTGGTTGTCCCA
 AGTATTTCCATGAGCTGCATAAAAAGCTGTTGTCCGTGGCTGAGAAGCATGGGCTGACCCTTGAGCGGA
 GACTGGAGATGACAGGTGTGTGCCAGTCAGATGGCACTGACCCTCCTCGGAGGACCTAACAGGTTGAA
 TCCCAAAAATGTTACCAGAGGCCTACAGTGGCTCTACTGTGTGGACCTCATGTGAAGGGGGCTCAGGT
 ATCAGCTGTGGAAGGCACCTAGCCAACCATGATGTCCAGTTCATCCTTTTCTGCCCAATTTTGTCAAGA
 GTTTGGAATCTATCACCATGAGCTGTGCTCTTCAGCAAGCCCAAGGCCAACAAGTGTACGCTAGCCTCAA
 AGATCTGCCACTAGCCCTGTGGACCTGGTCATCAACTGCCTGGATTGCCCTGAGAACGTCTTCTGCGC
 GATCAACCCTGGTACAAGGCAGCTGTGGCTGGGCCAACCAGAACCAGGACCAGTACTAGCATAGACC
 CTCCTGTGCATGAAGTCGAACAGGGCATTGATGCCAAATGGTCACTGGCACTGGGCTGCCTCTGCCACT
 GGGGGAGCACGCAGGCCGTATCTATTTGTGCGACATTGGCATTCCCAGCAGGTCTTCCAGGAGGTGGG
 ATCAACTACCACTCGCCCTTGGCTGCAAGTTTGTATCCCACTGCACTCTGCT

ACGCGTACGCGGCCGCTCGAG - GFP Tag - GTTTAA

Protein Sequence:

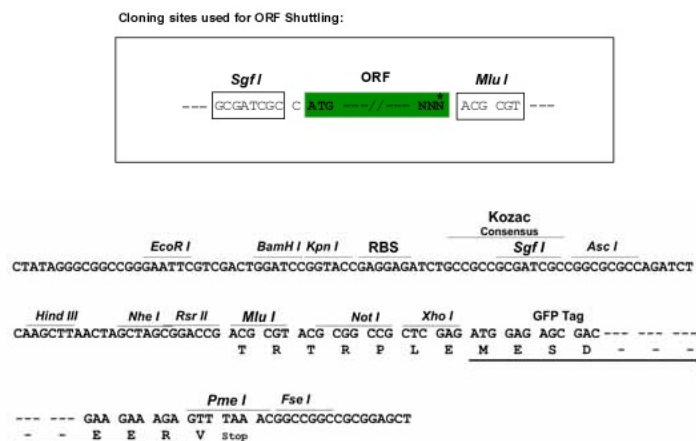
>RG202321 representing NM_025083
 Red=Cloning site Green=Tags(s)

MATDWLGSIVSINCGDSLGVYQGRVSAVDQVSQTISLTRPFHNGVKLVPEVTFRAGDITELKILEIPGP
 GDNQHFGLDHLQTELGPSGAGCQVGINQNGTGKFKKPASSSAPQNIKRTDVKSQDVAVSPQQQCSKS
 YVDRHMESLSQSKSFRRRHNSWSSSRHPNQATPKKSGLKNGQMKNKDDECFGDDIEEIPDITDFDFEGL
 ALFDKAAVFEEIDTYERRSGTRSRGIPNERPTRYRHDENILESEPIVYRRIIVPHNVSKEFGCTDSGLVVP
 SLSYELHKLLSVAEKHGLTLERRLEMTGVCASQMALTLGGPNRLNPKNVHQRPTVALLCGPHVKAQG
 ISCGRHLANHDVQVILFLPNFVKMLESITNELSLFSKTQQQVSSLDLPTSPVDLVINCLDCPENVFLR
 DQPWYKA AVAWANQNRAPVLSIDPPVHEVEQGIDAKWSLALGLPLPLGEHAGRIYLCDIGIPQQVFQEVG
 INYHSPFGCKFVIPLHSA

TRTRPLE - GFP Tag - V

Restriction Sites:

Sgfl-MluI

Cloning Scheme:


ACCN: NM_025083

ORF Size: 1524 bp

OTI Disclaimer: The molecular sequence of this clone aligns with the gene accession number as a point of reference only. However, individual transcript sequences of the same gene can differ through naturally occurring variations (e.g. polymorphisms), each with its own valid existence. This clone is substantially in agreement with the reference, but a complete review of all prevailing variants is recommended prior to use. [More info](#)

OTI Annotation: This clone was engineered to express the complete ORF with an expression tag. Expression varies depending on the nature of the gene.

Components: The ORF clone is ion-exchange column purified and shipped in a 2D barcoded Matrix tube containing 10ug of transfection-ready, dried plasmid DNA (reconstitute with 100 ul of water).

Reconstitution Method:

1. Centrifuge at 5,000xg for 5min.
2. Carefully open the tube and add 100ul of sterile water to dissolve the DNA.
3. Close the tube and incubate for 10 minutes at room temperature.
4. Briefly vortex the tube and then do a quick spin (less than 5000xg) to concentrate the liquid at the bottom.
5. Store the suspended plasmid at -20°C. The DNA is stable for at least one year from date of shipping when stored at -20°C.

RefSeq: [NM_025083.5](#)

RefSeq Size: 3755 bp

RefSeq ORF: 1527 bp

Locus ID: 80153

UniProt ID: [Q96F86](#)

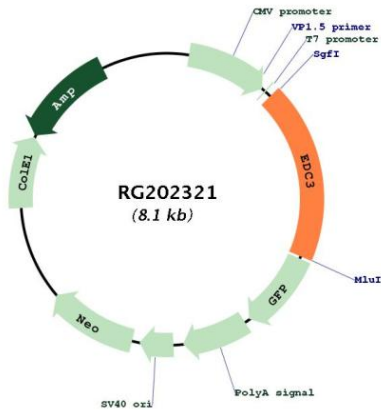
Cytogenetics: 15q24.1

Domains: YjeF_N

Protein Pathways: RNA degradation

Gene Summary: This gene encodes a protein that is important in mRNA degradation. The encoded protein is a component of a decapping complex that promotes efficient removal of the monomethylguanosine (m7G) cap from mRNAs, as part of the 5' to 3' mRNA decay pathway. Mutations in this gene have been identified in human patients with an autosomal recessive form of intellectual disability. [provided by RefSeq, May 2017]

Product images:



Circular map for RG202321