

## Product datasheet for **RG202304**

### PRRT2 (NM\_145239) Human Tagged ORF Clone

#### Product data:

Product Type:	Expression Plasmids
Product Name:	PRRT2 (NM_145239) Human Tagged ORF Clone
Tag:	TurboGFP
Symbol:	PRRT2
Synonyms:	BFIC2; BFIS2; DSPB3; DYT10; EKD1; FICCA; ICCA; IFITMD1; PKC
Mammalian Cell Selection:	Neomycin
Vector:	pCMV6-AC-GFP (PS100010)
E. coli Selection:	Ampicillin (100 ug/mL)
ORF Nucleotide Sequence:	>RG202304 representing NM_145239 Red=Cloning site Blue=ORF Green=Tags(s)

TTTTGTAATACGACTCACTATAGGGCGGCCGGAATTCGTCGACTGGATCCGGTACCGAGGAGATCTGCC  
GCC**CGATCGCC**

ATGGCAGCCAGCAGCTCTGAGATCTCTGAGATGAAGGGGTTGAGGAGAGTCCCAAGTTCCAGGCGAAG  
GGCCTGGCATTCTGAAGCTGAAACTGGCCCTCCCAGGTCCTAGCAGGGGTACCAGACCAGCCAGAGGC  
CCCGCAGCCAGGTCCAAACACCACTGCGGCCCTGTGGACTCAGGGCCCAAGGCTGGGCTGGCTCCAGAA  
ACCACAGAGACCCCGGCTGGGGCTCAGAAACAGCCAGGCCACAGACCTCAGCTTAAGCCAGGAGGGG  
AATCAAAGGCCAACTGCAGCCCCGAAGACCCATGCCAAGAAACAGTGTCAAACCAGAAGTGAGCAAAGA  
GGCCACTGCAGACCAGGGGTCCAGGCTGGAGTCTGCAGCCCCACCTGAACCAGCCCCAGAGCCTGTCCC  
CAACCAGACCCCGGCCAGATTCACAGCCTTCCCCAAGCCAGCCCTTCAACCAGAGCTCCCTACCCAGG  
AGGACCCACCCCTGAGATTCTGTCTGAGAGTGTAGGGGAAAAGCAAGAGAATGGGGCAGTGGTGCCCT  
GCAGGCTGGTGTAGGGGAAGAGGGCCAGCCCTGAGCCTCACTCACCACCCTCAAAAAATCCCCCCA  
GCCAATGGGGCCCCCCCCGAGTGTGCAGCAGCTGGTTGAGGAGGATCGAATGAGAAGGGCACACAGTG  
GGCATCCAGGATCTCCCGAGGTAGCCTGAGCCGCCACCCAGCTCCAGCTGGCAGGTCTGGGGTGA  
GGGGGTGAAGGCACCCAGAAACCTCGGACTACATCATCCTTGCCATCCTGTCTGCTTCTGCCCATG  
TGGCCTGTCAACATCGTGGCCTTCGCTTATGCTGTATGTCATGTCGCCGAACAGCCTGCAGAGGGGACGTGG  
ACGGGGCCAGCGTCTGGGCCGGGTAGCCAAGCTCTTAAGCATCGTGGCGCTGGTGGGGGAGTCCTCAT  
CATCATCGCCTCCTGCGTCATCAACTTAGGCGTGATAAG

**ACGCGT**ACGCGGCCGCTCGAG - GFP Tag - GTTTAA



[View online »](#)

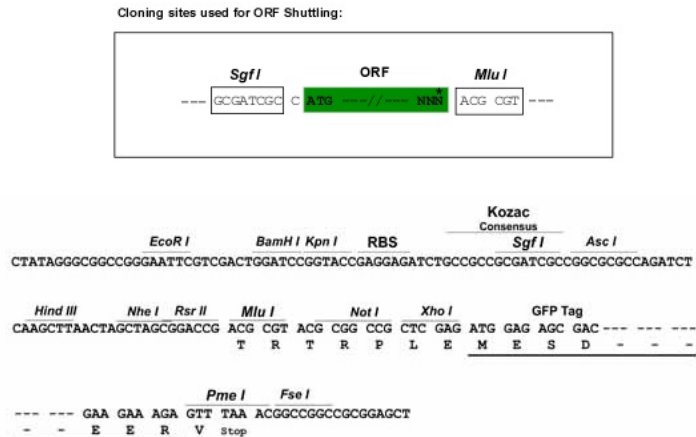
**Protein Sequence:** >RG202304 representing NM\_145239  
 Red=Cloning site Green=Tags(s)

MAASSSEISEMKGVVEESPKVPGEGPGHSEAETGPPQVLAVPDQPEAPQPGPNTTAAPVDSGPKAGLAPE  
 TTETPAGASETAQATDLSPGGESKANCSPEDPCQETVSKPEVSKEATADQGSRL ESAAPPEPAPEPAP  
 QPDRPDSQPSPKPALQPELPTQEDPTPEILSESVGEKQENGAVVPLQAGDGEEGPAPEPHSPSSKKSPP  
 ANGAPPRVLLQQLVEEDRMRAHSGHPGSPRGLSRHPSSQLAGPGVEGGEGTQKPRDYIILAILSCFCPM  
 WPVNIVAFAYAVMSRNSLQQGDVDGAQRLGRVAKLLSIVALVGGVLI I I ASCVINLVGYK

TRTRPLE - GFP Tag - V

**Restriction Sites:** SgfI-MluI

**Cloning Scheme:**



**ACCN:** NM\_145239

**ORF Size:** 1020 bp

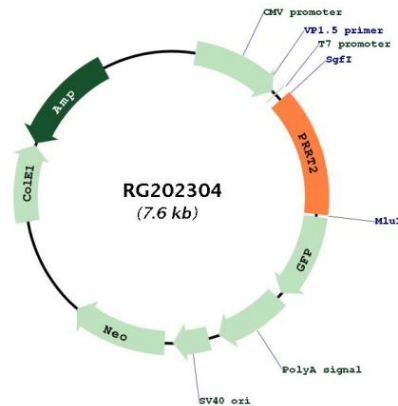
**OTI Disclaimer:** Due to the inherent nature of this plasmid, standard methods to replicate additional amounts of DNA in E. coli are highly likely to result in mutations and/or rearrangements. Therefore, OriGene does not guarantee the capability to replicate this plasmid DNA. Additional amounts of DNA can be purchased from OriGene with batch-specific, full-sequence verification at a reduced cost. Please contact our customer care team at [custsupport@origene.com](mailto:custsupport@origene.com) or by calling 301.340.3188 option 3 for pricing and delivery.

The molecular sequence of this clone aligns with the gene accession number as a point of reference only. However, individual transcript sequences of the same gene can differ through naturally occurring variations (e.g. polymorphisms), each with its own valid existence. This clone is substantially in agreement with the reference, but a complete review of all prevailing variants is recommended prior to use. [More info](#)

**OTI Annotation:** This clone was engineered to express the complete ORF with an expression tag. Expression varies depending on the nature of the gene.

<b>Components:</b>	The ORF clone is ion-exchange column purified and shipped in a 2D barcoded Matrix tube containing 10ug of transfection-ready, dried plasmid DNA (reconstitute with 100 ul of water).
<b>Reconstitution Method:</b>	<ol style="list-style-type: none"><li>1. Centrifuge at 5,000xg for 5min.</li><li>2. Carefully open the tube and add 100ul of sterile water to dissolve the DNA.</li><li>3. Close the tube and incubate for 10 minutes at room temperature.</li><li>4. Briefly vortex the tube and then do a quick spin (less than 5000xg) to concentrate the liquid at the bottom.</li><li>5. Store the suspended plasmid at -20°C. The DNA is stable for at least one year from date of shipping when stored at -20°C.</li></ol>
<b>RefSeq:</b>	<u>NM_145239.1, NP_660282.1</u>
<b>RefSeq Size:</b>	2372 bp
<b>RefSeq ORF:</b>	1023 bp
<b>Locus ID:</b>	112476
<b>UniProt ID:</b>	<u>Q7Z6L0</u>
<b>Cytogenetics:</b>	16p11.2
<b>Protein Families:</b>	Transmembrane
<b>Gene Summary:</b>	This gene encodes a transmembrane protein containing a proline-rich domain in its N-terminal half. Studies in mice suggest that it is predominantly expressed in brain and spinal cord in embryonic and postnatal stages. Mutations in this gene are associated with episodic kinesigenic dyskinesia-1. Alternatively spliced transcript variants encoding different isoforms have been found for this gene. [provided by RefSeq, Jan 2012]

## Product images:



Circular map for RG202304