

## Product datasheet for **RG202303**

### PX19 (PRELID1) (NM\_013237) Human Tagged ORF Clone

#### Product data:

Product Type:	Expression Plasmids
Product Name:	PX19 (PRELID1) (NM_013237) Human Tagged ORF Clone
Tag:	TurboGFP
Symbol:	PX19
Synonyms:	CGI-106; PRELI; PX19; SBBI12
Mammalian Cell Selection:	Neomycin
Vector:	pCMV6-AC-GFP (PS100010)
E. coli Selection:	Ampicillin (100 ug/mL)
ORF Nucleotide Sequence:	>RG202303 representing NM_013237 Red=Cloning site Blue=ORF Green=Tags(s)

TTTTGTAATACGACTCACTATAGGGCGGCCGGAATTCGTCGACTGGATCCGGTACCGAGGAGATCTGCC  
GCC**CGATCGCC**

ATGGTGAAGTATTTCTGGGCCAGAGCGTGCTCCGGAGTTCCTGGGACCAAGTGTTCGCCCTTCTGGC  
AGCGGTACCCGAATCCCTATAGCAAACATGTCTTGACGGAAGACATAGTACACCGGGAGGTGACCCCTGA  
CCAGAACTGCTGTCCCAGGACTCCTGACCAAGACCAACAGGATGCCACGCTGGGCCGAGCGACTATTT  
CCTGCCAATGTTGCTCACTCGGTGTACGTCTGGAGGACTCTATTGTGGACCCACAGAATCAGACCATGA  
CTACCTTCACCTGGAACATCAACCACGCCCGGCTGATGGTGGTGGAGGAACGATGTGTTTACTGTGTGAA  
CTCTGACAACAGTGGCTGGACTGAAATCCGCCGGGAAGCCTGGGTCTCCTCTAGCTTATTTGGTGTCTCC  
AGAGCTGTCCAGGAATTTGGTCTTGCCCGTTCAAAGCAACGTGACCAAGACTATGAAGGTTTTGAAT  
ATATCTTGCTAAGCTGCAAGGCGAGGCCCTTCCAAAACACTTGTGAGACAGCCAAGGAAGCCAAGGA  
GAAGGCAAAGGAGACGGCACTGGCAGCTACAGAGAAGGCCAAGGACCTCGCCAGCAAGGCCGCCACCAAG  
AAGCAGCAGCAGCAACAGTTTGTG

**ACGCGT**ACGCGGCCGCTCGAG - GFP Tag - GTTTAA



[View online »](#)

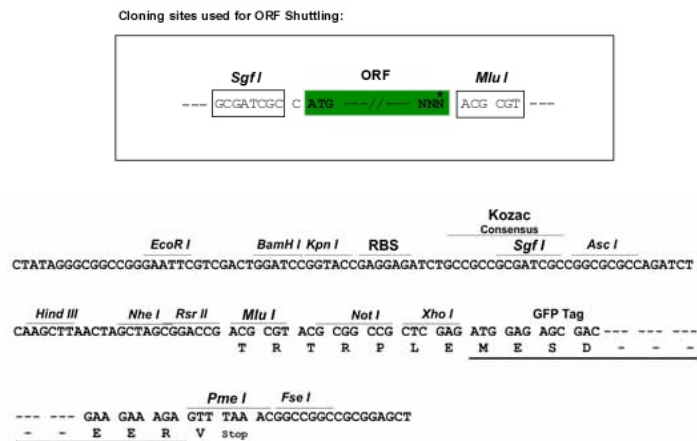
**Protein Sequence:** >RG202303 representing NM\_013237  
 Red=Cloning site Green=Tags(s)

MVKYFLGQSVLRSSWDQVFAAFWQRYPNPYSKHVLTEDI VHREVPDQKLLSRLLTKTNMRPWAERLF  
 PANVAHSVYVLEDSIVDPQNTMTTFTWNINHARLMVVEERCVCVNSDNGWTEIRREAWYSSSLFGVS  
 RAVQEFGLARFKSNVTKTMKGF EYILAKLQGEAPSKTLVETAKEAKEKAKETALAATEKAKDLASKAATK  
 KQQQQQFV

TRTRPLE - GFP Tag - V

**Restriction Sites:** SgfI-MluI

**Cloning Scheme:**



**ACCN:** NM\_013237

**ORF Size:** 657 bp

**OTI Disclaimer:** The molecular sequence of this clone aligns with the gene accession number as a point of reference only. However, individual transcript sequences of the same gene can differ through naturally occurring variations (e.g. polymorphisms), each with its own valid existence. This clone is substantially in agreement with the reference, but a complete review of all prevailing variants is recommended prior to use. [More info](#)

**OTI Annotation:** This clone was engineered to express the complete ORF with an expression tag. Expression varies depending on the nature of the gene.

**Components:** The ORF clone is ion-exchange column purified and shipped in a 2D barcoded Matrix tube containing 10ug of transfection-ready, dried plasmid DNA (reconstitute with 100 ul of water).

**Reconstitution Method:**

1. Centrifuge at 5,000xg for 5min.
2. Carefully open the tube and add 100ul of sterile water to dissolve the DNA.
3. Close the tube and incubate for 10 minutes at room temperature.
4. Briefly vortex the tube and then do a quick spin (less than 5000xg) to concentrate the liquid at the bottom.
5. Store the suspended plasmid at -20°C. The DNA is stable for at least one year from date of shipping when stored at -20°C.

**RefSeq:** [NM\\_013237.2](#), [NP\\_037369.1](#)

**RefSeq Size:** 1287 bp

**RefSeq ORF:** 660 bp

**Locus ID:** 27166

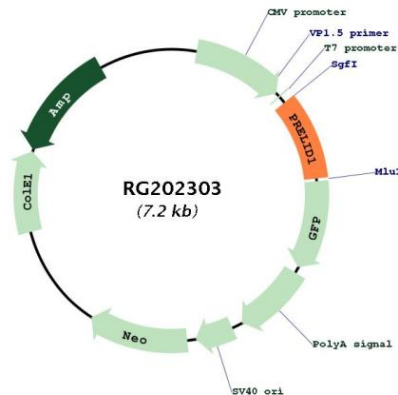
**UniProt ID:** [Q9Y255](#)

**Cytogenetics:** 5q35.3

**Domains:** MSF1

**Gene Summary:** This gene encodes a member of the late embryogenesis abundant motif-containing protein family. The encoded protein is localized to mitochondria and may function as a cytoprotectant by regulating cell death and differentiation. Alternative splicing results in multiple transcript variants encoding different isoforms. Several related pseudogenes have been identified. [provided by RefSeq, Nov 2012]

### Product images:



Circular map for RG202303