

Product datasheet for **RG202256**

RTF1 (NM_015138) Human Tagged ORF Clone

Product data:

Product Type:	Expression Plasmids
Product Name:	RTF1 (NM_015138) Human Tagged ORF Clone
Tag:	TurboGFP
Symbol:	RTF1
Synonyms:	GTL7; KIAA0252
Mammalian Cell Selection:	Neomycin
Vector:	pCMV6-AC-GFP (PS100010)
E. coli Selection:	Ampicillin (100 ug/mL)



[View online »](#)

ORF Nucleotide Sequence:

>RG202256 representing NM_015138
 Red=Cloning site Blue=ORF Green=Tags(s)

TTTTGTAATACGACTCACTATAGGGCGGCCGGAATTCGTCGACTGGATCCGGTACCGAGGAGATCTGCC
 GCC**CGGATCGCC**

ATGAAGAAACAGGCCAACAAAACGCCTCCTCAGGCAGTTCAGACAAAGACAGTTCAGCTGAGAGCTCAG
 CCCTGAGGAAGGTGAAGTGTGACTCTGACAGCAACAGCTCCTCTCCAGTTCAGATTCAGACTCTTC
 CTCAGAAGATGAAGAGTTCATGATGGCTATGGAGAAGACCTCATGGGAGATGAGGAAGACAGGGCCGT
 CTGGAACAGATGACAGAGAAAGAGAGAGCAAGAAGTGTCAATCGCATAGAGAAGAGGGAGGTGTTGA
 AAAGAAGATTTGAAATCAAGAAAAAACTAAAAACGCCAAAAAGAAAGAAAAGAAAAGAAAAGAAAA
 GCAAGAAGAGGAGCAAGAAAAGAAAAAACTGACACAGATTCAAGAATCTCAGGTAACATCCACAACAAG
 GAACGGCTTCCAAGCGGATGAGAACTAGACAAGAAATCTCAAGCCATGGAGGAGCTAAAAGCAGAGC
 GAGAAAAACGAAAGAACAGAACAGCTGAGCTCCTTGCCAAAAACAGCCATTAACCAAGTGGAGTCTA
 CTCTGATGATGAAGAGGAGGAAGAGGATGACAAATCCAGTGAAAAGTCAAGCCGCTCATCACGAACATCA
 TCGTCTGATGAAGAAGAGGAGAAAGAAGAGATCCCTCCCAATCCCAACCAAGTTTCTTACCTGAAGAAT
 TGAATCGGGTTCGATTATCACGGCATAAGCTAGAACGCTGGTGTACATGCCCTTCTTTGCTAAAACGT
 CACAGGATGTTTTGTGCGGATTGGCATCGGAAACCACAACAGCAAACAGTTTACCGGGTCGCTGAGATT
 ACGGGTGTGTGGAAACTGCCAAAGTTTACCAACTAGGTGGCACCAGAACAACAAAGGGCTGCAACTAC
 GGCATGGCAATGACCAACGCGTGTTCGGTTTAGAGTTTGTCTCAAACCAAGAATTCACCGAAAGTGAGTT
 TATGAAGTGAAAGAAGCGATGTTCTCTGCTGGCATGCAGTTGCCACTCTAGATGAAATCAATAAAAAAG
 GAATTATCTATTAAGAAGCTCTTAATTATAAATCAATGATCAGGACATTGAAGAGATTGTAAGAGAGA
 AAGAAAGTTTCAGAAAAGCTCCACCAACTACGCTATGAAGAAGACTCAGCTACTGAAGGAAAAGGCCAT
 GGCTGAGGACCTGGGGGATCAGGACAAGGCCAAACAAATCCAAGATCAACTGAATGAGCTGGAGGAACGG
 GCAGAGGCCCTGGACCGCAGCGGACCAAGAACATATCCGCTATCAGTTACATCAACCAGCGGAACCGGG
 AGTGGAACATTGTAGAGTCTGAGAAGGCCCTTGTGGTCAAAGTCAACATGAAAAACCAACAGATGGA
 TCCCTTTACTCGGCGCAGTGCAAGCCTACCATCGTTTCTAATTCAGAGACCCAGCTGTTCAAGCTGCC
 ATCTTGGCCAGCTGAATGCAAAATACGGTCTGGAGTGTACCAGATGCTCAAAGGAAATGAGCAAGG
 GTCAAGGCAAAGATAAGATTTGAATTCTAAGTCAGCCAGTGACCTCTCAGAAGATCTGTTCAAAGTACA
 CGATTTTGTGTAAGATTGACTTACAAGTCCCAGCTCAGAGTCAAAGGCTTTAGCCATCACCTCCAAG
 GCTCCGCCAGCAAGGATGGGGCTCAAGGAGATCTCTGAACTTGAAGACTACAAAAACGACGAGGGC
 TTATT

AG**CGGACCG**ACGCGTACGCGGCCGCTCGAG - GFP Tag - GTTTAA

Protein Sequence:

>RG202256 representing NM_015138
 Red=Cloning site Green=Tags(s)

MKKQANKTASSGSSDKDSSAESSAPEEGEVSDSDSNSSSSSSSDSSSEDEEFHDGYGEDLMGDEEDRAR
 LEQMTEKEREQELFNRIEKREVLKRRFEIKKKLKTAKKKEKKEKKEKQEEQEKKKLTQIQESQVTS
 ERRSKRDEKLDKKSQAMEELKAEREKRNRTAELLAKKQPLKTSEVYSDDEEEEDDKSSEKSDRSRST
 SSDEEEKEEIPPKSQPVSLPEELNRVLSRHKLERWCHMPFFAKTVTGCFVRIGIGNHNSKPVYRVAEI
 TGVVETAKVYQLGGTRTNKGLQLRHGNDQRVFRLEFVSNQEFTESEFMKWKEAMFSAGMQLPTLDEINKK
 ELSIKEALNYKFNDQDIEEIVKEKERFRKAPPNYAMKKTQLLKEKAMAEDLGDQDKAKQIQDQLNELEER
 AEALDRQRTKNISAIYSINQRNREWNIVESEKALVAESHNMKNQMDPFTRRQCKPTIVSNRDPVQAA
 ILAQLNAKYGSGVLPDAPKEMSKGQKDKDLNSKSASDLSEDLFKVHDFVYKIDLQVPSSESKALAITSK
 APPAKDGAPRRSLNLEDYKKRRGLI

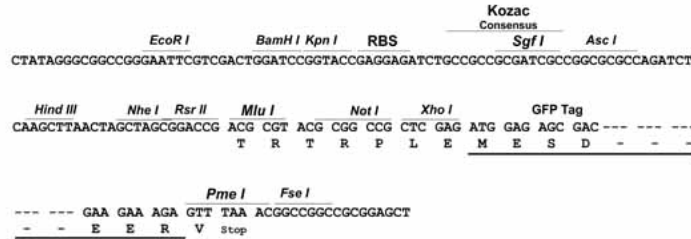
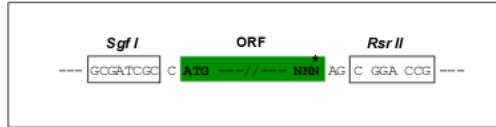
SGP**TRRRLE** - GFP Tag - V

Restriction Sites:

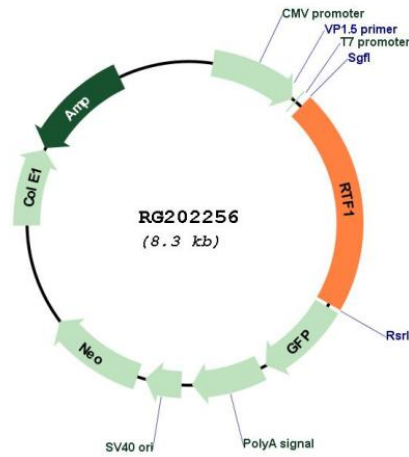
Sgfl-RsrII

Cloning Scheme:

Cloning sites used for ORF Shuttling:



Plasmid Map:



ACCN: NM_015138

ORF Size: 2010 bp

OTI Disclaimer:	<p>Due to the inherent nature of this plasmid, standard methods to replicate additional amounts of DNA in E. coli are highly likely to result in mutations and/or rearrangements. Therefore, OriGene does not guarantee the capability to replicate this plasmid DNA. Additional amounts of DNA can be purchased from OriGene with batch-specific, full-sequence verification at a reduced cost. Please contact our customer care team at custsupport@origene.com or by calling 301.340.3188 option 3 for pricing and delivery.</p> <p>The molecular sequence of this clone aligns with the gene accession number as a point of reference only. However, individual transcript sequences of the same gene can differ through naturally occurring variations (e.g. polymorphisms), each with its own valid existence. This clone is substantially in agreement with the reference, but a complete review of all prevailing variants is recommended prior to use. More info</p>
OTI Annotation:	<p>This clone was engineered to express the complete ORF with an expression tag. Expression varies depending on the nature of the gene.</p>
Components:	<p>The ORF clone is ion-exchange column purified and shipped in a 2D barcoded Matrix tube containing 10ug of transfection-ready, dried plasmid DNA (reconstitute with 100 ul of water).</p>
Reconstitution Method:	<ol style="list-style-type: none">1. Centrifuge at 5,000xg for 5min.2. Carefully open the tube and add 100ul of sterile water to dissolve the DNA.3. Close the tube and incubate for 10 minutes at room temperature.4. Briefly vortex the tube and then do a quick spin (less than 5000xg) to concentrate the liquid at the bottom.5. Store the suspended plasmid at -20°C. The DNA is stable for at least one year from date of shipping when stored at -20°C.
RefSeq:	NM_015138.2
RefSeq Size:	5014 bp
RefSeq ORF:	2133 bp
Locus ID:	23168
UniProt ID:	Q92541
Cytogenetics:	15q15.1
Gene Summary:	<p>This locus may represent a gene involved in regulation of transcription elongation and chromatin remodeling, based on studies of similar proteins in other organisms. The encoded protein may bind single-stranded DNA. [provided by RefSeq, Sep 2010]</p>