

## Product datasheet for **RG202255**

### OIP5 (NM\_007280) Human Tagged ORF Clone

#### Product data:

Product Type:	Expression Plasmids
Product Name:	OIP5 (NM_007280) Human Tagged ORF Clone
Tag:	TurboGFP
Symbol:	OIP5
Synonyms:	5730547N13Rik; CT86; hMIS18beta; LINT-25; MIS18B; MIS18beta
Mammalian Cell Selection:	Neomycin
Vector:	pCMV6-AC-GFP (PS100010)
E. coli Selection:	Ampicillin (100 ug/mL)
ORF Nucleotide Sequence:	>RG202255 representing NM_007280 Red=Cloning site Blue=ORF Green=Tags(s)

TTTTGTAATACGACTCACTATAGGGCGGCCGGAATTCGTCGACTGGATCCGGTACCGAGGAGATCTGCC  
 GCC**CGATCGC**C

ATGGCGGCTCAGCCGCTGCGGCATCGCTCACGTTGTGCAACGCCGCCCGGGGGGACTTTTGTGGTGGCA  
 CTGAGAGGGCGATTGACCAAGCTTCTTTACGACCTCCATGGAGTGGGATACGCAGGTGGTGAAGGGGTC  
 CTCGCCGCTCGGCCCCGAGGGCTGGGGGCTGAGGAGCCAGCCGCCGCCCGCAGCTGCCGTCTTGGCTG  
 CAGCCTGAGAGGTGCGCTGTGTCCAGTGCGCACAGTGTACGCAGTGCTCGCCGACTCGGTGCACCTCG  
 CCTGGGACCTGTGCGGTCCCTCGGGCCGTGGTCTTCTCCAGAGTTACAAATAACGTCGTTTGAAGC  
 GCCCTTCCTAGTTGGCATTGAAGGTTCACTCAAAGGCAGTACTTACAACCTTTTATTCTGTGGTTCTTGT  
 GGGATTCCCGTTGGTTTCCATCTGTATTCTACCCATGCTGCCCTGGCTGCCTTGAGAGGTCACTTCTGCC  
 TTTCCAGTGACAAAATGGTGTGCTATCTTTAAAAACAAAGCCATAGTAAATGCATCAGAGATGGATAT  
 TCAAAATGTTCTCTATCAGAAAAGATTGCAGAGCTGAAAGAGAAGATAGTGCTAACGCACAATCGCTTA  
 AAATCACTAATGAAGATTCTGAGTGAAGTGACTCCTGACCAAGTCCAAGCCAGAAAAC

**ACGCGT**ACGCGGCCGCTCGAG - GFP Tag - GTTTAA


[View online »](#)

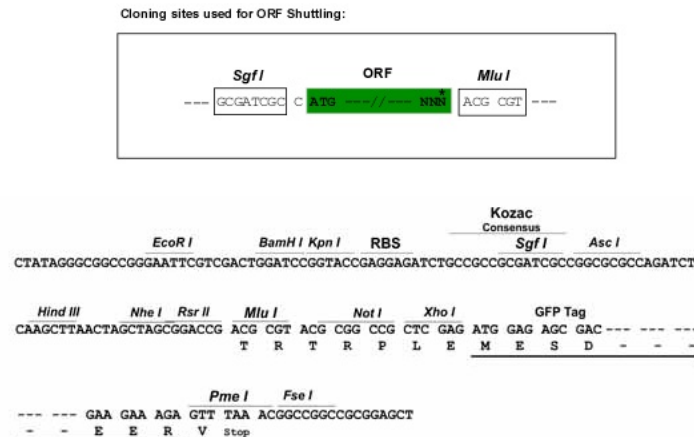
**Protein Sequence:** >RG202255 representing NM\_007280  
 Red=Cloning site Green=Tags(s)

MAAQPLRHRRCATPPRGDFCGGTERAIDQASFTTSMEDTQVVKGSSPLGPAGLGAEPAAGPQLPSWL  
 QPERCAVFQCAQCHAVLADSVHLAWDLRSRLGAVVFSRVTNNVVLEAPFLVGIEGSLKGSTYNLLFCGSC  
 GIPVGFHLYSTHAALALRGHFLCSSDKMVCYLLKTKAIVNASEMDIQNVPLSEKIAELKEKIVLTHNRL  
 KSLMKILSEVTPDQSKPEN

TRTRPLE – GFP Tag – V

**Restriction Sites:** SgfI-MluI

**Cloning Scheme:**



**ACCN:** NM\_007280

**ORF Size:** 687 bp

**OTI Disclaimer:** The molecular sequence of this clone aligns with the gene accession number as a point of reference only. However, individual transcript sequences of the same gene can differ through naturally occurring variations (e.g. polymorphisms), each with its own valid existence. This clone is substantially in agreement with the reference, but a complete review of all prevailing variants is recommended prior to use. [More info](#)

**OTI Annotation:** This clone was engineered to express the complete ORF with an expression tag. Expression varies depending on the nature of the gene.

**Components:** The ORF clone is ion-exchange column purified and shipped in a 2D barcoded Matrix tube containing 10ug of transfection-ready, dried plasmid DNA (reconstitute with 100 ul of water).

**Reconstitution Method:**

1. Centrifuge at 5,000xg for 5min.
2. Carefully open the tube and add 100ul of sterile water to dissolve the DNA.
3. Close the tube and incubate for 10 minutes at room temperature.
4. Briefly vortex the tube and then do a quick spin (less than 5000xg) to concentrate the liquid at the bottom.
5. Store the suspended plasmid at -20°C. The DNA is stable for at least one year from date of shipping when stored at -20°C.

**Note:** Plasmids are not sterile. For experiments where strict sterility is required, filtration with 0.22um filter is required.

**RefSeq:** [NM\\_007280.2](#)

**RefSeq Size:** 1249 bp

**RefSeq ORF:** 690 bp

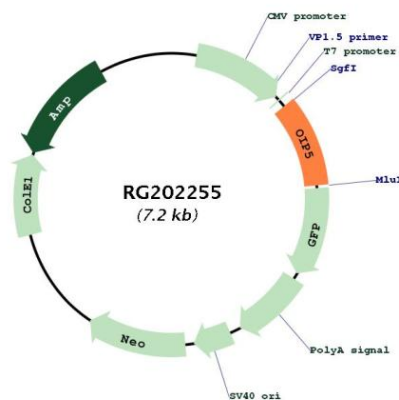
**Locus ID:** 11339

**UniProt ID:** [O43482](#)

**Cytogenetics:** 15q15.1

**Gene Summary:** The protein encoded by this gene localizes to centromeres, where it is essential for recruitment of CENP-A through the mediator Holliday junction recognition protein. Expression of this gene is upregulated in several cancers, making it a putative therapeutic target. Two transcript variants encoding different isoforms have been found for this gene. [provided by RefSeq, Dec 2015]

## Product images:



Circular map for RG202255