

Product datasheet for **RG202241**

SRPR alpha (SRPRA) (NM_003139) Human Tagged ORF Clone

Product data:

Product Type:	Expression Plasmids
Product Name:	SRPR alpha (SRPRA) (NM_003139) Human Tagged ORF Clone
Tag:	TurboGFP
Symbol:	SRPRA
Synonyms:	DP; Sralpha; SRPR
Mammalian Cell Selection:	Neomycin
Vector:	pCMV6-AC-GFP (PS100010)
E. coli Selection:	Ampicillin (100 ug/mL)



[View online »](#)

ORF Nucleotide Sequence:

>RG202241 representing NM_003139
 Red=Cloning site Blue=ORF Green=Tags(s)

TTTTGTAATACGACTCACTATAGGGCGGCCGGGAATTCGTCGACTGGATCCGGTACCGAGGAGATCTGCC
 GCC**CGGATCGCC**

ATGCTCGACTTCTCACCATTTCTCCAAGGGCGGGCTTGTGCTCTGGTCTCCAGGGCGTTAGCGACT
 CATGCACCGGACCGTTAACCGCTTGATTCGTTCCGTGCTGCTGCAGGAACGGGGAGGTAACAACCTCCTT
 CACCCATGAGGCACTCACACTCAAGTATAAACTGGACAACCAGTTTGAGCTGGTGTGGTTGGTTTT
 CAGAAGATCCTGACACTGACATATGTAGACAAATTGATAGATGACGTGCATCGGCTGTTTCGGGACAAGT
 ACCGCACAGAGATCCAACAGCAAAGTGTCTTAAGTTTATAAATGGCACTTTTGATTTCCAAAATGACTT
 CCTGCGGCTCCTTCGTGAAGCAGAGGAGAGCAGTAAGATCCGTGCTCCACTACCATGAAGAAATTTGAA
 GATTCTGAAAAGGCCAAGAAACCTGTGAGGTCCATGATTGAGACACGGGGGAAAAGCCCAAGGAAAAAG
 CAAAGAATAGCAAAAAAAGGGGCCAAGAAGGAAGTTCTGATGGTCTTTGGTACCAGCAAACCAGT
 CCCTGCAGAAAAGTCAGGTCTTCCAGTGGTCTGAGAACGGAGTAGAATTTCCAAAGAGGAGCTGATC
 CGCAGGAAGCGCAGGAGTTCATTGAGAAGCATGGGAGGGGTATGGAGAAGTCCAACAAGTCCACGAAGT
 CAGATGCTCCAAAGGAGAAGGGCAAAAAAGCACCCGGGTGTGGGAACTGGTGGCTGTGCTAACAAAGA
 AGTGTGGATTACAGTACTCCCACCACCAATGGAACCCCTGAGGCTGCCTTGTCTGAGGACATCAACCTG
 ATTCGAGGGACTGGGCTGGGGGCAGCTTCAGGATCTGGACTGCAGCAGCTCTGATGACGAAGGGGCTG
 CTCAAACTCTACAAACCTAGTGCACCAAGGGAACACTGGGTGGCATGTTTGGTATGCTGAAGGGCCT
 TGTGGGTTCAAAGAGCTTGAGTCGTGAAGACATGGAATCTGTGCTGGACAAGATGCGTATCATCTCATT
 GCTAAGAACGTGGCTGCAGACATTGCCGTCCAGCTCTGTAATCTGTTGCCAACAAAGTTGGAAGGGAAGG
 TGATGGGACGTTACGACCGGTGACTTCCACAGTAAAGCAAGCCCTACAGGAGTCCCTGGTGCAGATTTCT
 GCAGCCACAGCGTCGTGTAGACATGCTCCGGGACATCATGGATGCCAGGCTGCCAGCGCCTTATGTC
 GTCACCTTCTGCGCGTTAATGGAGTGGGAAATCTACTAATCTTGCCAAGATTTCTTCTGGTGTAG
 AGAATGGCTTCAAGTGTCTCATTGCTGCCTGTGATACATTTCTGCTGGGGCCGTGGAGCAGCTGCGTAC
 ACACACCCGGCGTTTGTAGTGCCTACACCCTCCAGAGAAGCATGGTGGCCGACCATGGTGCAGTTGTTT
 GAAAAGGGCTATGGCAAGGATGCTGCTGGCATTGCCATGGAAGCCATTGCTTTTGACGTAACCAAGGCT
 TTGACGTGGTGTGGTGGACACGGCAGGCCGATGCAAGACAATGCCCTCTGATGACTGCCCTGGCCAA
 ACTCATTACTGTCAATACACCTGATTTGGTGTGTTTGTAGGAGAAGCCTTAGTAGGCAATGAAGCCGTG
 GACCAGCTGGTCAAGTTCAACAGAGCCTTGGCTGACCATTCTATGGCTCAGACACCTCGGCTCATTGATG
 GCATTGTTCTTACAAATTTGATACCATTGATGACAAGGTGGGAGCTGCTATTTCTATGACGTACATCAC
 AAGCAAACCCATCGTCTTTGTGGGCACCGCCAGACCTACTGTGACTACGCAGCCTCAATGCCAAGGCT
 GTGGTGGCTGCCCTCATGAAGGCT

AG**CGGACCG**ACGCGTACGCGGCCGCTCGAG – GFP Tag – GTTTAA

Protein Sequence:

>RG202241 representing NM_003139
 Red=Cloning site Green=Tags(s)

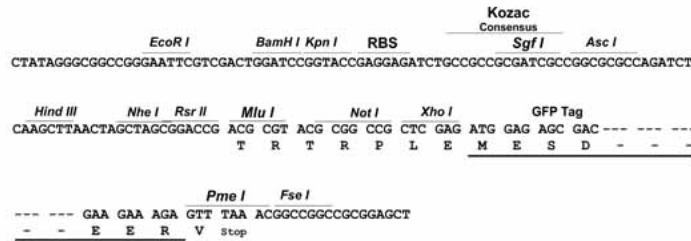
MLDFFTFISKGGVLVWCFQGVSDSCTGPVNALIRSVLLQERGGNSFTHEALTLKYKLDNQFELVFVVG
 QKILTLTYVDKLIIDVHRLFRDKYRTEIQQSALSLNLTDFDQNDLRLREAEESKIRAPTTMKKFE
 DSEKAKKPVRSMIETRGEKPKAKNSKKKGAKKEGSDGPLATSKVPVPAEKSGLPVGPENGVELSKEELI
 RRRKEEFIQKHGRGMEKSNKSTKSDAPKEKGGKAPRVWELGGCANKEVLDYSTPTTNGTPEALSEDINL
 IRGTGSGGQLQDLDCSSDDEGAAQNSTKPSATKGLGGMFGMLKGLVGSKSLSREDMESVLDKMRDHLI
 AKNVAADIAVQLCESVANKLEKVMGTFSTVTSTVKQALQESLVQILQPQRRVMDLRDMDAQRQRPPYV
 VTFCGVNGVVKSTNLAKISFWLLENGFSVLIACDFTFRAGAVEQLRTHTRRLSALHPPEKHGGRTMVQLF
 EKGYGKDAAGIAMEAIAFARNQGFVVLVDTAGRMQDNAPLMTALAKLITVNTPDLLVLFVGEALVNEAV
 DQLVKFNALADHSMAQTPRLIDGIVLTKFDTIDDKVGAAISMTYITSKPIVFGVTGQTYCDLRSNAKA
 VVAALMKA

SGP**TRRRLE** – GFP Tag – V

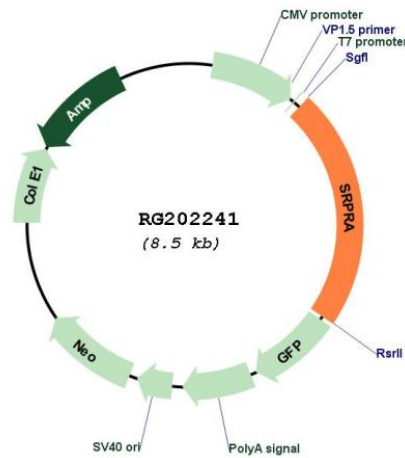
Restriction Sites: SgfI-RsrII

Cloning Scheme:

Cloning sites used for ORF Shuttling:



Plasmid Map:



ACCN: NM_003139

ORF Size: 1914 bp

OTI Disclaimer:	The molecular sequence of this clone aligns with the gene accession number as a point of reference only. However, individual transcript sequences of the same gene can differ through naturally occurring variations (e.g. polymorphisms), each with its own valid existence. This clone is substantially in agreement with the reference, but a complete review of all prevailing variants is recommended prior to use. More info
OTI Annotation:	This clone was engineered to express the complete ORF with an expression tag. Expression varies depending on the nature of the gene.
Components:	The ORF clone is ion-exchange column purified and shipped in a 2D barcoded Matrix tube containing 10ug of transfection-ready, dried plasmid DNA (reconstitute with 100 ul of water).
Reconstitution Method:	<ol style="list-style-type: none">1. Centrifuge at 5,000xg for 5min.2. Carefully open the tube and add 100ul of sterile water to dissolve the DNA.3. Close the tube and incubate for 10 minutes at room temperature.4. Briefly vortex the tube and then do a quick spin (less than 5000xg) to concentrate the liquid at the bottom.5. Store the suspended plasmid at -20°C. The DNA is stable for at least one year from date of shipping when stored at -20°C.
RefSeq:	NM_003139.4
RefSeq Size:	2958 bp
RefSeq ORF:	1917 bp
Locus ID:	6734
UniProt ID:	P08240
Cytogenetics:	11q24.2
Domains:	SRP54, AAA, SRP-alpha_N
Protein Families:	Druggable Genome
Protein Pathways:	Protein export
Gene Summary:	The gene encodes a subunit of the endoplasmic reticulum signal recognition particle receptor that, in conjunction with the signal recognition particle, is involved in the targeting and translocation of signal sequence tagged secretory and membrane proteins across the endoplasmic reticulum. Alternative splicing results in multiple transcript variants. [provided by RefSeq, Apr 2010]