

Product datasheet for **RG202213**

TRAPPC4 (NM_016146) Human Tagged ORF Clone

Product data:

Product Type:	Expression Plasmids
Product Name:	TRAPPC4 (NM_016146) Human Tagged ORF Clone
Tag:	TurboGFP
Symbol:	TRAPPC4
Synonyms:	CGI-104; HSPC172; NEDESBA; PTD009; SBDN; SYNBINDIN; TRS23
Mammalian Cell Selection:	Neomycin
Vector:	pCMV6-AC-GFP (PS100010)
E. coli Selection:	Ampicillin (100 ug/mL)
ORF Nucleotide Sequence:	>RG202213 representing NM_016146 Red=Cloning site Blue=ORF Green=Tags(s)

TTTTGTAATACGACTCACTATAGGGCGCCGGGAATTCGTCGACTGGATCCGGTACCGAGGAGATCTGCC
GCC**CGATCGCC**

ATGGCGATTTTTAGTGTGTATGTGGTGAACAAAGCTGGCGGCTTGATTTACCAGTTGGACAGCTACGCGC
CACGGGCTGAGGCTGAGAAAACCTTCAGTTATCCGCTGGATCTGCTGCTCAAGCTACACGATGAGCGTGT
GTTGGTTGCTTTCGGCCAGCGGGACGGCATCCGAGTGGGTCATGCAGTGTGGCCATCAATGGCATGGAC
GTGAATGGCAGGTACACGGCCGACGGGAAAGAGGTGCTGGAGTATCTGGGTAACCCTGCTAATTACCCGG
TGTCATTTCGATTTGGCCGGCCCGCTCACTTCTAATGAGAAGCTTATGCTGGCCTCCATGTTTCACTC
GCTCTTTGCCATCGGCTCCAGCTGTCTCCTGAACAGGGAAGCTCAGGCATTGAGATGCTGGAGACAGAC
ACATTCAAATTGCACTGTACCAGACACTGACAGGGATCAAGTTTGTGGTTCTAGCAGATCCTAGGCAAG
CTGGAATAGATTCTTCTCCGAAAGATTTATGAGATTTACTCAGACTTTGCCCTCAAGAATCCATTCTA
TTCCTTAGAAATGCCTATCAGGTGTGAGCTCTTTGACCAGAACCTGAAGCTAGCTCTGGAGGTGGCAGAG
AAGGCTGGAACCTTTGGACCTGGGTCA

ACGCGTACGCGGGCCGCTCGAG - GFP Tag - GTTTAA



[View online »](#)

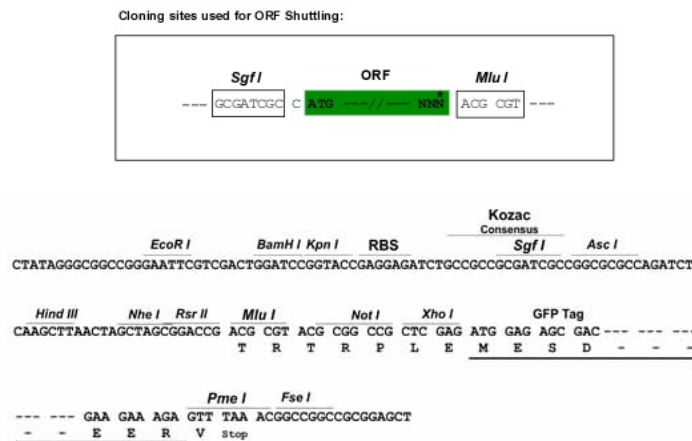
Protein Sequence: >RG202213 representing NM_016146
Red=Cloning site Green=Tags(s)

MAIFSVYVVKAGGLIYQLDSYAPRAEAEKTFSYPLDLLLKLHDERVLVAFGQRDGIKRVGHAVLAINGMD
 VNGRYTADGKEVLEYLGNPANYPVSIKIRGRPLTSNEKMLASMFHSLFAIGSQLSPEQSSGIEMLETD
 TFKLHCYQTLTGKIFVVLADPRQAGIDSLLRKIYEIYSDFAKKNPFYSLEMPIRCELFDQNLKLALEVAE
 KAGTFGPGS

TRTRPLE - GFP Tag - V

Restriction Sites: SgfI-MluI

Cloning Scheme:



ACCN: NM_016146

ORF Size: 657 bp

OTI Disclaimer: The molecular sequence of this clone aligns with the gene accession number as a point of reference only. However, individual transcript sequences of the same gene can differ through naturally occurring variations (e.g. polymorphisms), each with its own valid existence. This clone is substantially in agreement with the reference, but a complete review of all prevailing variants is recommended prior to use. [More info](#)

OTI Annotation: This clone was engineered to express the complete ORF with an expression tag. Expression varies depending on the nature of the gene.

Components: The ORF clone is ion-exchange column purified and shipped in a 2D barcoded Matrix tube containing 10ug of transfection-ready, dried plasmid DNA (reconstitute with 100 ul of water).

Reconstitution Method:

1. Centrifuge at 5,000xg for 5min.
2. Carefully open the tube and add 100ul of sterile water to dissolve the DNA.
3. Close the tube and incubate for 10 minutes at room temperature.
4. Briefly vortex the tube and then do a quick spin (less than 5000xg) to concentrate the liquid at the bottom.
5. Store the suspended plasmid at -20°C. The DNA is stable for at least one year from date of shipping when stored at -20°C.

RefSeq: [NM_016146.1](#), [NP_057230.1](#)

RefSeq Size: 1222 bp

RefSeq ORF: 660 bp

Locus ID: 51399

UniProt ID: [Q9Y296](#)

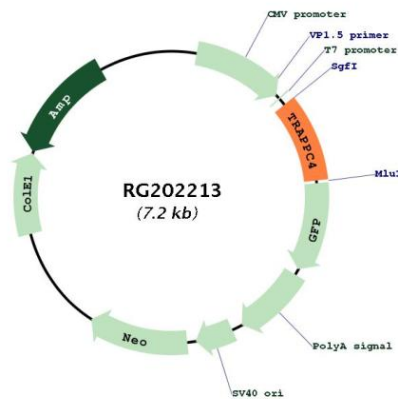
Cytogenetics: 11q23.3

Domains: Sybindin

Protein Families: Druggable Genome

Gene Summary: May play a role in vesicular transport from endoplasmic reticulum to Golgi.[UniProtKB/Swiss-Prot Function]

Product images:



Circular map for RG202213