

Product datasheet for **RG202205**

STYX (NM_145251) Human Tagged ORF Clone

Product data:

Product Type: Expression Plasmids
 Product Name: STYX (NM_145251) Human Tagged ORF Clone
 Tag: TurboGFP
 Symbol: STYX
 Mammalian Cell Selection: Neomycin
 Vector: pCMV6-AC-GFP (PS100010)
 E. coli Selection: Ampicillin (100 ug/mL)
 ORF Nucleotide Sequence: >RG202205 representing NM_145251
 Red=Cloning site Blue=ORF Green=Tags(s)

TTTTGTAATACGACTCACTATAGGGCGGCCGGAATTCGTCGACTGGATCCGGTACCGAGGAGATCTGCC
 GCC**CGATCGCC**

ATGGAGGACGTGAAGCTGGAGTCCCTTCCCTTCCACAGTGAAGGAAGACGCCGAGGAGTGGACCTACC
 CTATGAGACGAGAGATGCAGGAAATTTACCTGGATTGTTCTTAGGCCCATATTCATCTGCTATGAAAAG
 CAAGCTACCTGTACTACAGAAACATGGAATAACCCATATAATATGCATACGACAAAATATTGAAGCAAAC
 TTTATTAACCAAACCTTTCAGCAGTTATTTAGATATTTAGTCTGGATATTGCAGATAATCCAGTTGAAA
 ATATAATACGTTTTTTCCCTATGACTAAGGAATTTATTGATGGAGCTTACAAATGGGAGAAAAGTTCT
 TGTGCATGGAAATGCAGGGATCTCCAGAAGTGCAGCCTTTGTTATTGCATACATTATGAAACATTTGGA
 ATGAAGTACAGAGATGCTTTTGCTTATGTTCAAGAAAGAAGATTTGTATTAATCCTAATGCTGGATTTG
 TCCATCAACTTCAGGAATATGAAGCCATCTACCTAGCAAATTAACAATACAGATGATGTCACCACTCCA
 GATAGAAAGGTCATTATCTGTTCACTTCTGGTACCACAGGCAGTTTGAAGAGAACACATGAAGAAGAGGAT
 GATTTTGAACCATGCAAGTGGCGACTGCACAGAATGGC

ACGCGTACGCGGCCGCTCGAG - GFP Tag - GTTTAA

Protein Sequence: >RG202205 representing NM_145251
 Red=Cloning site Green=Tags(s)

MEDVKLEFPSPQCKEDAEEWTYPMRREMQEILPGLFLGPYSSAMKSKLPVLQKHGITHIICIRQNIEN
 FIKPNFQQLFRYLVLADIADNPVENIIRFFPMTKEFIDGSLQMGKVLVHGNAGISRSAFVIAYIMETFG
 MKYRDAFAYVQERRFCINPNAGFVHQLQEYEA IYLAKLTIQMMSPLQIERSLSVHSGTTGSLKRTHEEED
 DFGTMQVATAQNG

TRTRPLE - GFP Tag - V

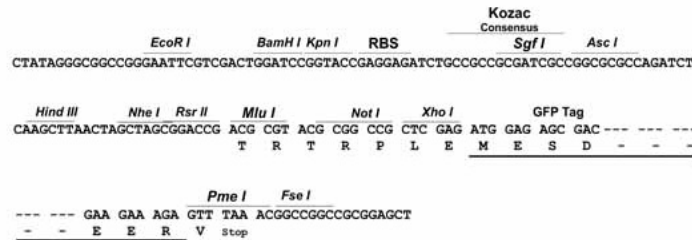
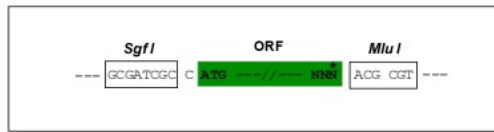


[View online »](#)

Restriction Sites: SgfI-MluI

Cloning Scheme:

Cloning sites used for ORF Shutting:



ACCN: NM_145251

ORF Size: 669 bp

OTI Disclaimer: The molecular sequence of this clone aligns with the gene accession number as a point of reference only. However, individual transcript sequences of the same gene can differ through naturally occurring variations (e.g. polymorphisms), each with its own valid existence. This clone is substantially in agreement with the reference, but a complete review of all prevailing variants is recommended prior to use. [More info](#)

OTI Annotation: This clone was engineered to express the complete ORF with an expression tag. Expression varies depending on the nature of the gene.

Components: The ORF clone is ion-exchange column purified and shipped in a 2D barcoded Matrix tube containing 10ug of transfection-ready, dried plasmid DNA (reconstitute with 100 ul of water).

Reconstitution Method:

1. Centrifuge at 5,000xg for 5min.
2. Carefully open the tube and add 100ul of sterile water to dissolve the DNA.
3. Close the tube and incubate for 10 minutes at room temperature.
4. Briefly vortex the tube and then do a quick spin (less than 5000xg) to concentrate the liquid at the bottom.
5. Store the suspended plasmid at -20°C. The DNA is stable for at least one year from date of shipping when stored at -20°C.

RefSeq: [NM_145251.4](#)

RefSeq Size: 2607 bp

RefSeq ORF: 672 bp

Locus ID: 6815

UniProt ID: [Q8WUJ0](#)

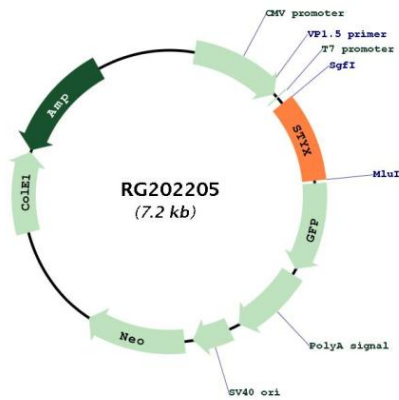
Cytogenetics: 14q22.1

Domains: DSPc

Protein Families: Druggable Genome, Phosphatase

Gene Summary: The protein encoded by this gene is a pseudophosphatase, able to bind potential substrates but lacking an active catalytic loop. The encoded protein may be involved in spermiogenesis. Two transcript variants encoding the same protein have been found for these genes. [provided by RefSeq, Oct 2011]

Product images:



Circular map for RG202205