

## Product datasheet for **RG202164**

### SFRP2 (NM\_003013) Human Tagged ORF Clone

#### Product data:

Product Type:	Expression Plasmids
Product Name:	SFRP2 (NM_003013) Human Tagged ORF Clone
Tag:	TurboGFP
Symbol:	SFRP2
Synonyms:	FRP-2; SARP1; SDF-5
Mammalian Cell Selection:	Neomycin
Vector:	pCMV6-AC-GFP (PS100010)
E. coli Selection:	Ampicillin (100 ug/mL)
ORF Nucleotide Sequence:	>RG202164 representing NM_003013 Red=Cloning site Blue=ORF Green=Tags(s)

TTTTGTAATACGACTCACTATAGGGCGGCCGGAATTCGTCGACTGGATCCGGTACCGAGGAGATCTGCC  
GCC**CGATCGCC**

ATGCTGCAGGGCCCTGGCTCGTGTCTGCTCTTCTCGCCTCGCACTGCTGCCTGGGCTCGGCGCGG  
GGCTCTTCTCTTTGGCCAGCCGACTTCTCTACAAGCGCAGCAATTGCAAGCCATCCCGGTCAACCT  
GCAGCTGTGCCACGGCATCGAATACCAGAACATGCGGCTGCCAACCTGCTGGGCCACGAGACCATGAAG  
GAGGTGTGGAGCAGGCCGGCGCTTGGATCCCGCTGGTCATGAAGCAGTGCCACCCGGACACCAAGAAGT  
TCCTGTGCTCGCTCTTCCGCCCGTCTGCCTCGATGACCTAGACGAGACCATCCAGCCATGCCACTCGCT  
CTGCGTGCAGGTGAAGGACCGCTGCGCCCCGGTCATGTCCGCCTTCGGCTTCCCTGGCCCCGACATGCTT  
GAGTGCACCGTTTCCCCCAGGACAACGACCTTTCATCCCCCTCGCTAGCAGCGACCACCTCCTGCCAG  
CCACCGAGGAAGCTCAAAGGTATGTGAAGCCTGCAAAAATAAAAATGATGATGACAACGACATAATGGA  
AACGCTTTGTA AAAATGATTTTGCCTGAAAATAAAAGTGAAGGAGATAACCTACATCAACCGAGATACC  
AAAATCATCTGGAGACCAAGAGCAAGACCATTTACAAGCTGAACGGTGTGTCCGAAAGGGACCTGAAGA  
AATCGGTGCTGTGGCTCAAAGACAGCTTGCAAGTGCACCTGTGAGGAGATGAACGACATCAACCGCCCTA  
TCTGGTCATGGGACAGAAACAGGGTGGGGAGCTGGTGATCACCTCGGTGAAGCGGTGGCAGAAGGGGCAG  
AGAGAGTTCAAGCGCATCTCCCGCAGCATCCGCAAGCTGCAGTGC

**ACGCGT**ACGCGGCCGCTCGAG - GFP Tag - GTTTAA



[View online »](#)

**Protein Sequence:** >RG202164 representing NM\_003013  
 Red=Cloning site Green=Tags(s)

MLQGPGLLLLLFLASHCCLGSARGLFLFGQPDFSYKRSNCKPIPVNLQLCHGIEYQNMRLPNLLGHETMK  
 EVLEQAGAWIPLVMKQCHPDTKKFLCSLFAPVCLDDLDETIQCHSLCVQVKDRCAPVMSAFGFPWPDML  
 ECDRFPQDNDLCIPLASSDHLPLATEEAPKVCEACKNKNDNDIMETLCKNDFALKIKVKEITYINRDT  
 KIILETKSKTIYKLNQVSRDLKKSVLWLKDSLQCTCEEMNDINAPYLVMGQKQGGELVITSVKRWQKGQ  
 REFKRISRSIRKLQC

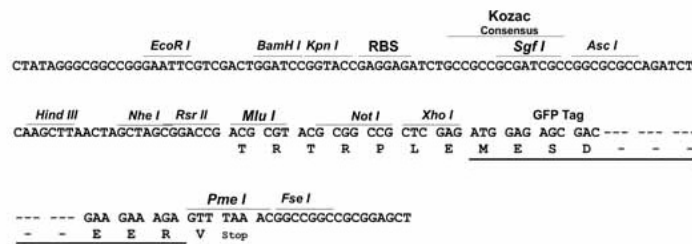
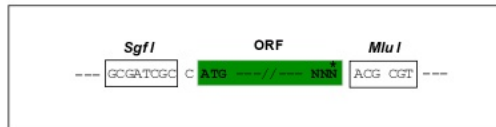
TRTRPLE - GFP Tag - V

**Restriction Sites:**

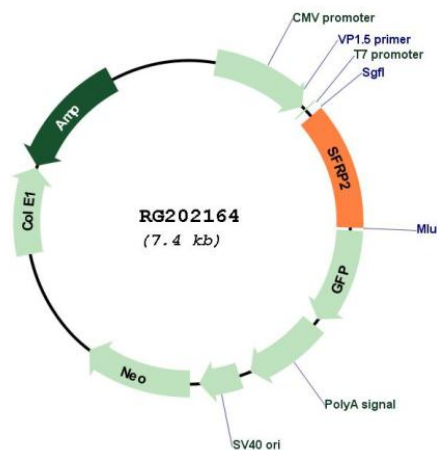
SgfI-MluI

**Cloning Scheme:**

Cloning sites used for ORF Shuttling:



**Plasmid Map:**



**ACCN:** NM\_003013

**ORF Size:** 885 bp

<b>OTI Disclaimer:</b>	The molecular sequence of this clone aligns with the gene accession number as a point of reference only. However, individual transcript sequences of the same gene can differ through naturally occurring variations (e.g. polymorphisms), each with its own valid existence. This clone is substantially in agreement with the reference, but a complete review of all prevailing variants is recommended prior to use. <a href="#">More info</a>
<b>OTI Annotation:</b>	This clone was engineered to express the complete ORF with an expression tag. Expression varies depending on the nature of the gene.
<b>Components:</b>	The ORF clone is ion-exchange column purified and shipped in a 2D barcoded Matrix tube containing 10ug of transfection-ready, dried plasmid DNA (reconstitute with 100 ul of water).
<b>Reconstitution Method:</b>	<ol style="list-style-type: none"><li>1. Centrifuge at 5,000xg for 5min.</li><li>2. Carefully open the tube and add 100ul of sterile water to dissolve the DNA.</li><li>3. Close the tube and incubate for 10 minutes at room temperature.</li><li>4. Briefly vortex the tube and then do a quick spin (less than 5000xg) to concentrate the liquid at the bottom.</li><li>5. Store the suspended plasmid at -20°C. The DNA is stable for at least one year from date of shipping when stored at -20°C.</li></ol>
<b>RefSeq:</b>	<a href="#">NM_003013.2</a> , <a href="#">NP_003004.1</a>
<b>RefSeq Size:</b>	2005 bp
<b>RefSeq ORF:</b>	888 bp
<b>Locus ID:</b>	6423
<b>UniProt ID:</b>	<a href="#">Q96HF1</a>
<b>Cytogenetics:</b>	4q31.3
<b>Protein Families:</b>	Secreted Protein
<b>Protein Pathways:</b>	Wnt signaling pathway
<b>Gene Summary:</b>	This gene encodes a member of the SFRP family that contains a cysteine-rich domain homologous to the putative Wnt-binding site of Frizzled proteins. SFRPs act as soluble modulators of Wnt signaling. Methylation of this gene is a potential marker for the presence of colorectal cancer. [provided by RefSeq, Jul 2008]