

Product datasheet for **RG202109**

PTTG1IP (NM_004339) Human Tagged ORF Clone

Product data:

Product Type: Expression Plasmids
Product Name: PTTG1IP (NM_004339) Human Tagged ORF Clone
Tag: TurboGFP
Symbol: PTTG1IP
Synonyms: C21orf1; C21orf3; PBF
Mammalian Cell Selection: Neomycin
Vector: pCMV6-AC-GFP (PS100010)
E. coli Selection: Ampicillin (100 ug/mL)
ORF Nucleotide Sequence: >RG202109 representing NM_004339
 Red=Cloning site Blue=ORF Green=Tags(s)

TTTTGTAATACGACTCACTATAGGGCGCCGGGAATTCGTCGACTGGATCCGGTACCGAGGAGATCTGCC
 GCC**CGATCGCC**

ATGGCGCCCGGAGTGGCCCGGGCCGACGCCGTA**CTGGAGTTGCGCCTCGGTGGCGCCGCGCTGCTCC**
TGCTGCTCATCCCGGTGGCCGCGCAGGAGCCTCCCGAGCTGCTTGTCTCAGAACAACAAAAAC
CTGTGAAGAGTGCCTGAAGAACGTCTCCTGTCTTTGGTGAACACTAACAAGGCTTGTCTGGACTACCCA
GTTACAAGCGTCTTGCCACCGGCTCCCTTTGTAATTGAGCTCTGCACGCTGGGGAGTTTGTGGGTGA
ACTTTGAGGCGCTGATCATCACCATGTCGGTAGTCGGGGAAACCCTCCTCCTGGCATTGCCATCTGCTG
CTGCTGCTGCTGCAGGAGGAAGAGGAGCCGGAAGCCGGACAGGAGTGAGGAGAAGGCCATGCGTGAGCGG
GAGGAGAGGCGGATACGGCAGGAGGAACGGAGAGCAGAGATGAAGACAAGACATGATGAAATCAGAAAAA
AATATGGCCTGTTAAAGAAGAAAACCCGTATGCTAGATTTGAAAACAAC

ACGCGTACGCGGCCGCTCGAG - GFP Tag - GTTTAA

Protein Sequence: >RG202109 representing NM_004339
 Red=Cloning site Green=Tags(s)

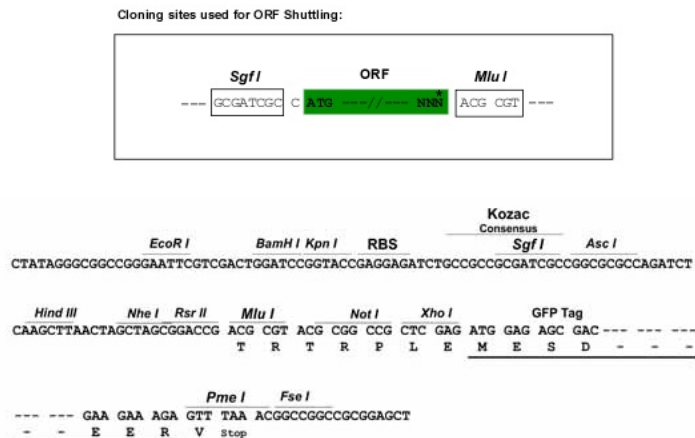
MAPGVARGPTYWRLRLGGAALLLLLIPVAAAQEPGAACSQNTNKTCEECLKNVSLWCNTNKA**CLDYP**
VTSVLPPASLCKLSSARWVCWVNFEAL IITMSVVGTTLLGIAICCCCCRRKRSRKPDRSEEKAMRER
EERRIRQEERRAEMKTRHDEIRKKYGLFKEENPYARFENN

TRTRPLE - GFP Tag - V

Restriction Sites: Sgfl-MluI



[View online >](#)

Cloning Scheme:


ACCN: NM_004339

ORF Size: 540 bp

OTI Disclaimer: The molecular sequence of this clone aligns with the gene accession number as a point of reference only. However, individual transcript sequences of the same gene can differ through naturally occurring variations (e.g. polymorphisms), each with its own valid existence. This clone is substantially in agreement with the reference, but a complete review of all prevailing variants is recommended prior to use. [More info](#)

OTI Annotation: This clone was engineered to express the complete ORF with an expression tag. Expression varies depending on the nature of the gene.

Components: The ORF clone is ion-exchange column purified and shipped in a 2D barcoded Matrix tube containing 10ug of transfection-ready, dried plasmid DNA (reconstitute with 100 ul of water).

Reconstitution Method:

1. Centrifuge at 5,000xg for 5min.
2. Carefully open the tube and add 100ul of sterile water to dissolve the DNA.
3. Close the tube and incubate for 10 minutes at room temperature.
4. Briefly vortex the tube and then do a quick spin (less than 5000xg) to concentrate the liquid at the bottom.
5. Store the suspended plasmid at -20°C. The DNA is stable for at least one year from date of shipping when stored at -20°C.

RefSeq: [NM_004339.4](#)

RefSeq Size: 2737 bp

RefSeq ORF: 543 bp

Locus ID: 754

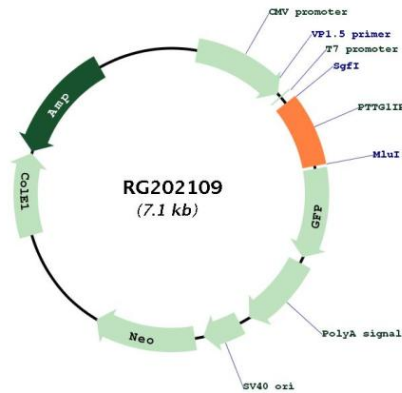
UniProt ID: [P53801](#)

Cytogenetics: 21q22.3

Protein Families: Druggable Genome, Transmembrane

Gene Summary: This gene encodes a single-pass type I integral membrane protein, which binds to pituitary tumor-transforming 1 protein (PTTG1), and facilitates translocation of PTTG1 into the nucleus. Coexpression of this protein and PTTG1 induces transcriptional activation of basic fibroblast growth factor. Alternatively spliced transcript variants have been found for this gene. [provided by RefSeq, Nov 2013]

Product images:



Circular map for RG202109