

## Product datasheet for **RG202095**

### **CHN 1 (CHN1) (NM\_001025201) Human Tagged ORF Clone**

#### **Product data:**

Product Type:	Expression Plasmids
Product Name:	CHN 1 (CHN1) (NM_001025201) Human Tagged ORF Clone
Tag:	TurboGFP
Symbol:	CHN 1
Synonyms:	ARHGAP2; CHN; DURS2; NC; RHOGAP2
Mammalian Cell Selection:	Neomycin
Vector:	pCMV6-AC-GFP (PS100010)
E. coli Selection:	Ampicillin (100 ug/mL)



[View online »](#)

**ORF Nucleotide Sequence:**

>RG202095 representing NM\_001025201  
 Red=Cloning site Blue=ORF Green=Tags(s)

TTTTGTAATACGACTCACTATAGGGCGGCCGGAATTCGTCGACTGGATCCGGTACCGAGGAGATCTGCC  
 GCC**CGGATCGCC**

ATGGCCCTGACCCTGTTTGATACAGATGAATATAGACCTCCTGTTTGAAATCTTACTTATATCAGCTAC  
 AACAGGAAGCCCCTCATCCTCGAAGAATTACCTGTACTTGCGAGGTGAAAACAGACCAAAGTATTATGG  
 AAGAGAGTTTCATGGCATGATCTCCAGAGAAGCAGCCGACCAGCTCTTGATTGTGGCTGAGGGGAGCTAC  
 CTCATCCGGGAGAGCCAGCGGCAGCCAGGGACCTACACTTTGGCTTTAAGATTTGGAAGTCAAACCAGAA  
 ACTTCAGGCTCTACTACGATGGCAAGCACTTTGTTGGGGAGAAACGCTTTGAGTCCATCCACGATCTGGT  
 GACTGATGGCTTGATTACTCTCTATATTGAAACCAAGGCAGCAGAATACATTGCCAAGATGACGATAAAC  
 CCAATTTATGAGCACGTAGGATACACAACCTTAAACAGAGAGCCAGCATACAAAAAACATATGCCAGTCC  
 TGAAGAGACACATGATGAGAGAGATTCTACAGGCCAGGATGGGGTGTGAGAGAAAAGTTGACATCACT  
 TGTTAGAAGAGCAACTCTGAAAGAAAACGAGCAAATTCAAAATATGAAAAGATTCACAATTTCAAGGTG  
 CATACTTCAGAGGGCCACTGGTGTGAATACTGTGCCAATTTATGTGGGGTCTCATTGCTCAGGGAG  
 TGAATGTGCAGATTGTGGTTTGAATGTTCCATAAGCAGTGTCCAAAGATGGTCCCAAATGACTGTAGCC  
 AGACTTGAAGCATGTCAAAAAGGTGTACAGCTGTGACCTTACGACGCTCGTAAAAGCACATACCACTAAG  
 CGGCCAATGGTGGTAGACATGTGCATCAGGGAGATTGAGTCTAGAGGTCTTAATTCTGAAGGACTATACC  
 GAGTATCAGGATTTAGTGACCTAATTGAAGATGTCAAGATGGCTTTTCGACAGAGATGGTGAAGGCAGA  
 TATTTCTGTGAACATGTATGAAGATCAACATTATCACTGGTGCCTTAACTGTACTTCAGGGATTTG  
 CCAATTCCTCATTACATATGATGCCTACCCTAAGTTTATAGAATCTGCCAAAATATGGATCCGGATG  
 AGCAATTGGAAACCCCTTCATGAAGCACTGAAACTACTGCCACCTGCTCACTGCGAAACCCCTCCGGTACCT  
 CATGGCACATCTAAAGAGAGTGACCCTCCACGAAAAGGAGAATCTTATGAATGCAGAGAACCTTGAATC  
 GTCTTTGGACCCACCCTTATGAGATCTCCAGAAGTACGACCCATGGCTGCATTGAATGATATACGGTATC  
 AGAGACTGGTGGTGGAGCTGCTTATCAAAAACGAAGACATTTTATTT

**ACGCGT**ACGCGGCCGCTCGAG – GFP Tag – GTTTAA

**Protein Sequence:**

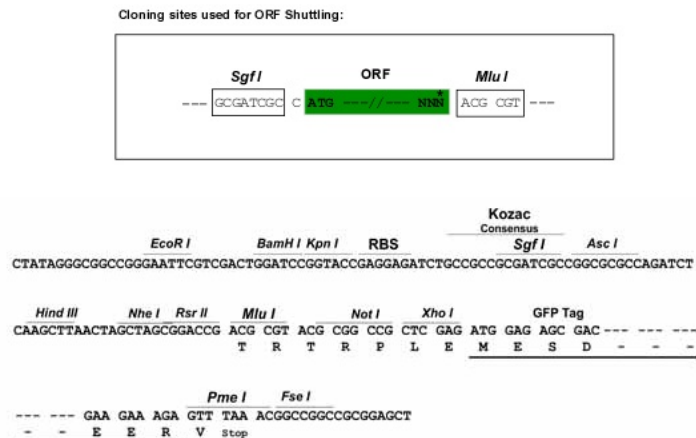
>RG202095 representing NM\_001025201  
 Red=Cloning site Green=Tags(s)

MALTLFDTDEYRPPVWKSYLEQLQEQEAPHPRITCTCEVENRPKYYGREFHGMISREAADQLLIVAEGSY  
 LIRESQRQPGTYTLALRFGSQTRNFRLLYYDGKHFVGEKRFESIHDLVTDGLITLYIETKAAEYIAKMTIN  
 PIYEHVGYTTLNREPAYKKHMPVLKETHDERDSTGQDGVSEKRLTSLVRRATLKENEQIPKYEKIHNFKV  
 HTFRGPHWCEYCANFMWGLIAQGVKCADCGLNVHKQCSKMPNDCKPDLKHVKKVYSCDLTTLVKAHTTK  
 RPMVDMCIREIESRGLNSEGLYRVSGFSDLIEDVKMAFDRDGEKADISVNMVEDINIITGALKLYFRDL  
 PIPLITYDAYPKFIESAKIMDPDEQLETLHEALKLLPPAHCETLRYLMAHLKRVTLHEKENLMNAENLGI  
 VFGPTLMRSPELDAMAALNDIRYQLVVELLIKNEIDILF

**TRTRPLE** – GFP Tag – V

**Restriction Sites:**

SgfI-MluI

**Cloning Scheme:**


**ACCN:** NM\_001025201

**ORF Size:** 1377 bp

**OTI Disclaimer:** The molecular sequence of this clone aligns with the gene accession number as a point of reference only. However, individual transcript sequences of the same gene can differ through naturally occurring variations (e.g. polymorphisms), each with its own valid existence. This clone is substantially in agreement with the reference, but a complete review of all prevailing variants is recommended prior to use. [More info](#)

**OTI Annotation:** This clone was engineered to express the complete ORF with an expression tag. Expression varies depending on the nature of the gene.

**Components:** The ORF clone is ion-exchange column purified and shipped in a 2D barcoded Matrix tube containing 10ug of transfection-ready, dried plasmid DNA (reconstitute with 100 ul of water).

**Reconstitution Method:**

1. Centrifuge at 5,000xg for 5min.
2. Carefully open the tube and add 100ul of sterile water to dissolve the DNA.
3. Close the tube and incubate for 10 minutes at room temperature.
4. Briefly vortex the tube and then do a quick spin (less than 5000xg) to concentrate the liquid at the bottom.
5. Store the suspended plasmid at -20°C. The DNA is stable for at least one year from date of shipping when stored at -20°C.

**RefSeq:** [NM\\_001025201.1](#), [NP\\_001020372.1](#)

**RefSeq Size:** 2482 bp

**RefSeq ORF:** 1302 bp

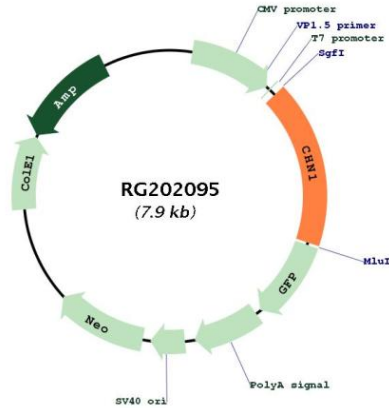
**Locus ID:** 1123

**UniProt ID:** [P15882](#)

**Cytogenetics:** 2q31.1

**Gene Summary:**

This gene encodes GTPase-activating protein for ras-related p21-rac and a phorbol ester receptor. It is predominantly expressed in neurons, and plays an important role in neuronal signal-transduction mechanisms. Mutations in this gene are associated with Duane's retraction syndrome 2 (DURS2). Alternatively spliced transcript variants encoding different isoforms have been described for this gene. [provided by RefSeq, Apr 2011]

**Product images:**


Circular map for RG202095