

## Product datasheet for **RG202062**

### PEX5 (NM\_000319) Human Tagged ORF Clone

#### Product data:

Product Type:	Expression Plasmids
Product Name:	PEX5 (NM_000319) Human Tagged ORF Clone
Tag:	TurboGFP
Symbol:	PEX5
Synonyms:	PBD2A; PBD2B; PTS1-BP; PTS1R; PXR1; RCDP5
Mammalian Cell Selection:	Neomycin
Vector:	pCMV6-AC-GFP (PS100010)
E. coli Selection:	Ampicillin (100 ug/mL)



[View online »](#)

**ORF Nucleotide Sequence:**

>RG202062 representing NM\_000319  
 Red=Cloning site Blue=ORF Green=Tags(s)

TTTTGTAATACGACTCACTATAGGGCGGCCGGAATTCGTCGACTGGATCCGGTACCGAGGAGATCTGCC  
 GCC**CGGATCGCC**

ATGGCAATGCGGGAGCTGGTGGAGGCCAATGCGGGGTGCCAACCCGCTCATGAAGCTCGCCGGGCACT  
 TCACCCAGGACAAGGCCCTTCGGCAGGAGGGATTGAGGCCTGGCCCTGGCCCCCGAGCCCCGGCCTC  
 TGAGGCAGCCTCCAAGCCTTTGGGAGTAGCTTCTGAAGATGAGTTGGTGGCTGAATTCCTGCAGGACCAG  
 AATGCACCCCTTGTGTCCCGTGCCTCAGACCTCAAGATGGATGACCTCCTGGCTGAGATGCAGCAGA  
 TTGAGCAGTCAAACCTCCGCCAGGCTCCCAGAGAGCCCTGGTGTGGCAGACTTGGCCTTGTCTGAGAA  
 CTGGGCCAGGAGTTTCTGCAGCTGGAGATGCTGTGGATGTAACCTCAGGATTATAATGAGACTGACTGG  
 TCCCAAGAATTCATCTGAAGTTACAGACCCCTTGTCTGTGTCCCTGCCCGTGGGCTGAGGAATATT  
 TGGAGCAATCAGAGGAGAAGCTGTGGCTGGGAGAACCTGAGGGAACAGCCACCGATCGCTGGTATGATGA  
 ATATCATCTGAGGAGGATCTGCAGCACACGGCCAGTGACTTTGTGGCCAAAGTGGATGACCCCAAATTG  
 GCTAATTCGAGTTCTGAAATTCGTGCGGCAGATTGGCGAAGGGCAGGTGTCCCTGGAGTCCGGTGCAG  
 GGTCCGGCCGAGCTCAGGCAGAACAGTGGGCAGCAGAGTTTATACAGCAGCAGGGTACATCAGATGCCTG  
 GTTGACCAAGTTCACAAGACCAAGTAAACACATCTGCCCTTGATATGGAGTTTGAACGAGCCAAGTCACT  
 ATAGAGTTGCAGGCAGAGTTGGAGGAGATGGCAAAACGGGATGCTGAGGCCACCCCTGGCTTTCTGACT  
 ATGATGACCTTACGTCACTACCTATGATAAGGGGTACCAAGTTTGGAGGAGGAAACCCCTTGCCTGATCA  
 CCCTCAGCCTTTTGAAGAAGGGCTGCGGCCTTCAGGAGGGGACCTGCCAAATGCTGTGCTGCTTTTT  
 GAGGCAGCTGTGCAGCAGGATCCTAAGCACATGGAAGCTTGGCAGTATCTGGGTACCACCCAGGCAGAGA  
 ATGAACAAGAAGTATTAGCCATCAGTGCATTGCGGAGGTGTCTGGAGCTAAAGCCAGATAACAGCAGC  
 ACTGATGGCGCTGGCTGTGAGCTTCAACACAGTCCCTGCAGCGACAGGCTGTGAAACCTACGAGAG  
 TGGCTGCGGTACACACCGCCTATGCCATCTGGTGCACCTGCTGAAGAAGGGGCTGGTGGGCAGGAC  
 TGGGCCCCAGCAAGCGTATCCTGGGATCTCTCTTGTCTGACTCCCTGTTTCTTGAAGTGAAGAGCTCTT  
 CCTGGCAGCTGTGCGGCTGGACCCTACCTCCATTGACCCTGATGTGCAGTGTGGCTTGGGAGTCTTTTC  
 AACCTGAGTGGGAGTATGACAAGGCCGTGGACTGCTTACAGCTGCCCTCAGCGTTCTGCCAATGACT  
 ATTTGCTGTGGAATAAGCTAGGCCACCCTGGCCAATGGAACCCAGAGTGAAGAAGCAGTAGCTGCGTA  
 CCGCCGGGCCCTCGAGCTCCAGCCTGGCTATATCCGGTCCGCTATAACCTGGGCATCAGCTGCATCAAC  
 CTGGGGCTCACCGGAGGCTGTGGAGCACTTTCTGGAGCCCTGAACATGCAGAGGAAAAGCCGGGGCC  
 CCCGGGTGAAGGAGGTGCCATGTGCGGAGAACATCTGGAGCACCTGCGTTTGGCATTGTCTATGTTAGG  
 CCAGAGCGATGCCTATGGGGCAGCCGACGCGGGATCTGTCCACCCCTCAACTATGTTTGGCCTGCC  
 CAG

AG**CGGACCG**ACGCGTACGCGGCCGCTCGAG - GFP Tag - GTTTAA

**Protein Sequence:**

>RG202062 representing NM\_000319  
 Red=Cloning site Green=Tags(s)

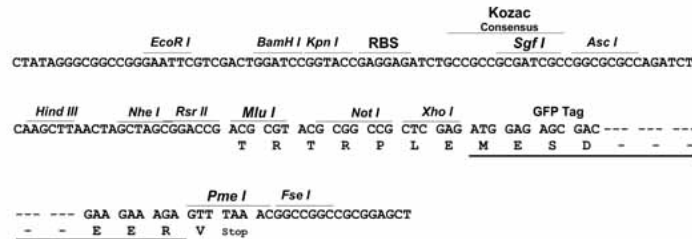
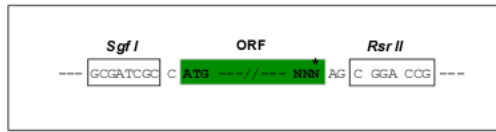
MAMRELVEAECGGANPLMKLAGHFTQDKALRQEGLRPGWPPGAPASEAASKPLGVASEDELVAEFLQDQ  
 NAPLVSRAPQTFKMDLLAEMQQIEQSNFRQAPQAPGVADLALSENWAQEF LAAGDAVDVTQDYNEDW  
 SQEFLI SEVTDPLSVSPARWAEYLEQSEEKLWLGEPEGTATDRWYDEYHPEEDLQHTASDFVAKVDDPKL  
 ANSEFLKFVVRQIGEGQVLESGAGSGRAQAEQWAAEF IQQQGTSDAWVDQFTRPVNTSALDMEFERAKSA  
 IELQAELEEMAKRDAEAHPWLSYDDLTSATYDKGYQFEENPLRDHPQPFEEGLRRLQEGDLPNAVLLF  
 EAAVQDPKHMEAWQYLGTQAENEQELLAISALRRCLELKPNDQTALMALAVSF TNESLQRQACETLRD  
 WLRYPAYAHLVTPAEAGGAGLGPSKRILGSLSDSLFLEVKELFLAAVRLDPTSIDPDVQCGLGVLF  
 NLSGEYDKAVDCFTAALSVRPNDYLLWNKLGATLANGNQSEEVAAYRRALQLPGYIRSRYNLGISGIN  
 LGAHREAVEHFLEALNMQRKSRGPRGEGGAMSENIWSTLRLALSMLGQSDAYGAADARDLSTLLTMFGLP  
 Q

SGP**TRRRLE** - GFP Tag - V

Restriction Sites: SgfI-RsrII

Cloning Scheme:

Cloning sites used for ORF Shuttling:



ACCN: NM\_000319

ORF Size: 1893 bp

OTI Disclaimer: The molecular sequence of this clone aligns with the gene accession number as a point of reference only. However, individual transcript sequences of the same gene can differ through naturally occurring variations (e.g. polymorphisms), each with its own valid existence. This clone is substantially in agreement with the reference, but a complete review of all prevailing variants is recommended prior to use. [More info](#)

OTI Annotation: This clone was engineered to express the complete ORF with an expression tag. Expression varies depending on the nature of the gene.

Components: The ORF clone is ion-exchange column purified and shipped in a 2D barcoded Matrix tube containing 10ug of transfection-ready, dried plasmid DNA (reconstitute with 100 ul of water).

- Reconstitution Method:
1. Centrifuge at 5,000xg for 5min.
  2. Carefully open the tube and add 100ul of sterile water to dissolve the DNA.
  3. Close the tube and incubate for 10 minutes at room temperature.
  4. Briefly vortex the tube and then do a quick spin (less than 5000xg) to concentrate the liquid at the bottom.
  5. Store the suspended plasmid at -20°C. The DNA is stable for at least one year from date of shipping when stored at -20°C.

RefSeq: [NM\\_000319.5](#)

RefSeq Size: 3215 bp

RefSeq ORF: 1896 bp

Locus ID: 5830

UniProt ID: [P50542](#)

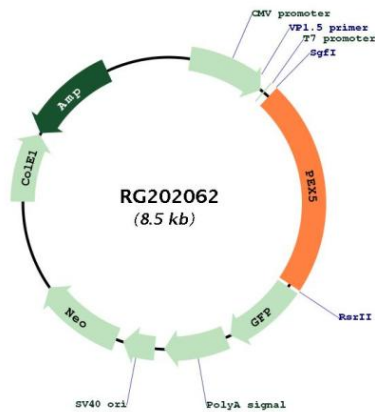
**Cytogenetics:** 12p13.31

**Domains:** TPR

**Protein Families:** Druggable Genome

**Gene Summary:** The product of this gene binds to the C-terminal PTS1-type tripeptide peroxisomal targeting signal (SKL-type) and plays an essential role in peroxisomal protein import. Peroxins (PEXs) are proteins that are essential for the assembly of functional peroxisomes. The peroxisome biogenesis disorders (PBDs) are a group of genetically heterogeneous autosomal recessive, lethal diseases characterized by multiple defects in peroxisome function. The peroxisomal biogenesis disorders are a heterogeneous group with at least 14 complementation groups and with more than 1 phenotype being observed in cases falling into particular complementation groups. Although the clinical features of PBD patients vary, cells from all PBD patients exhibit a defect in the import of one or more classes of peroxisomal matrix proteins into the organelle. Defects in this gene are a cause of neonatal adrenoleukodystrophy (NALD), a cause of Zellweger syndrome (ZWS) as well as may be a cause of infantile Refsum disease (IRD). Alternatively spliced transcript variants encoding different isoforms have been identified. [provided by RefSeq, Oct 2008]

**Product images:**



Circular map for RG202062