

Product datasheet for **RG202055**

TAF12 (NM_005644) Human Tagged ORF Clone

Product data:

Product Type: Expression Plasmids
Product Name: TAF12 (NM_005644) Human Tagged ORF Clone
Tag: TurboGFP
Symbol: TAF12
Synonyms: TAF2J; TAFII20
Mammalian Cell Selection: Neomycin
Vector: pCMV6-AC-GFP (PS100010)
E. coli Selection: Ampicillin (100 ug/mL)
ORF Nucleotide Sequence: >RG202055 representing NM_005644
Red=Cloning site Blue=ORF Green=Tags(s)

TTTTGTAATACGACTCACTATAGGGCGGCCGGAATTCGTCGACTGGATCCGGTACCGAGGAGATCTGCC
GCC**CGATCGCC**

ATGAACCAAGTTGGCCCTCAGCCCTAATCAACCTCTCCAATTTCTCATCCATAAAACCGGAACCAAGCCA
GCACCCCTCCACAAGGCTCCATGGCCAATAGTACTGCAGTGGTAAAGATACCAGGCCTCTGGGCAGG
AGGTCGCTTAGCCCTGAAAACAATCAGGTATTGACCAAGAAGAAATTACAGGACTTAGTAAGAGAAGTG
GATCCTAATGAGCAGTTGGATGAAGATGTGGAGGAGATGCTGCTGCAGATTGCTGATGATTTTATCGAGA
GTGTGGTGACAGCAGCCTGTCAGCTTGCAGCGGCATCGCAAGTCTAGCACCTGGAGGTGAAAGATGTCCA
GCTGCATTTAGAGCGCCAGTGGAACATGTGGATCCAGGATTTGGCTCTGAAGAAATCCGACCCTACAAA
AAAGCTTGACCCACAGAAGCTCACAAACAGAGAATGGCATTGATCCGAAAAACAACCAAGAAA

ACGCGTACGCGGCCGCTCGAG - GFP Tag - GTTTAA

Protein Sequence: >RG202055 representing NM_005644
Red=Cloning site Green=Tags(s)

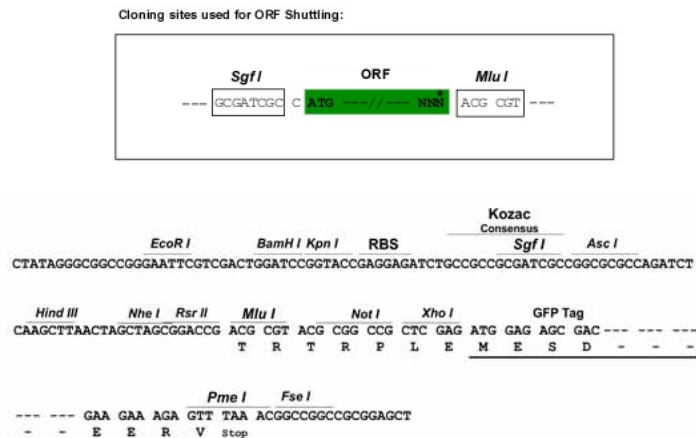
MNQFGPSALINLSNFSSIKPEPASTPPQGS MANSTAVVKIPGTPGAGGRLSPENNQVLTKKKLQDLVREV
DPNEQLDEDVEEMLLQIADDFIESVVTAAACQLARHRKSSSTLEVKDVQLHLERQWNMWIPFGFSEEIRPYK
KACTTEAHKQRMALIRKTTKK

TRTRPLE - GFP Tag - V

Restriction Sites: Sgfl-MluI



[View online »](#)

Cloning Scheme:


ACCN: NM_005644

ORF Size: 483 bp

OTI Disclaimer: The molecular sequence of this clone aligns with the gene accession number as a point of reference only. However, individual transcript sequences of the same gene can differ through naturally occurring variations (e.g. polymorphisms), each with its own valid existence. This clone is substantially in agreement with the reference, but a complete review of all prevailing variants is recommended prior to use. [More info](#)

OTI Annotation: This clone was engineered to express the complete ORF with an expression tag. Expression varies depending on the nature of the gene.

Components: The ORF clone is ion-exchange column purified and shipped in a 2D barcoded Matrix tube containing 10ug of transfection-ready, dried plasmid DNA (reconstitute with 100 ul of water).

Reconstitution Method:

1. Centrifuge at 5,000xg for 5min.
2. Carefully open the tube and add 100ul of sterile water to dissolve the DNA.
3. Close the tube and incubate for 10 minutes at room temperature.
4. Briefly vortex the tube and then do a quick spin (less than 5000xg) to concentrate the liquid at the bottom.
5. Store the suspended plasmid at -20°C. The DNA is stable for at least one year from date of shipping when stored at -20°C.

RefSeq: [NM_005644.4](#)

RefSeq Size: 1113 bp

RefSeq ORF: 486 bp

Locus ID: 6883

UniProt ID: [Q16514](#)

Cytogenetics: 1p35.3

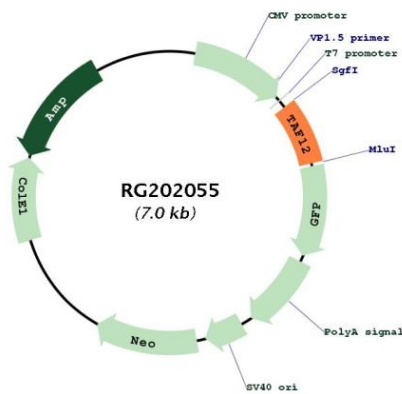
Domains: TFIID_A

Protein Families: Transcription Factors

Protein Pathways: Basal transcription factors

Gene Summary: Control of transcription by RNA polymerase II involves the basal transcription machinery which is a collection of proteins. These proteins with RNA polymerase II, assemble into complexes which are modulated by transactivator proteins that bind to cis-regulatory elements located adjacent to the transcription start site. Some modulators interact directly with the basal complex, whereas others may act as bridging proteins linking transactivators to the basal transcription factors. Some of these associated factors are weakly attached while others are tightly associated with TBP in the TFIID complex. Among the latter are the TAF proteins. Different TAFs are predicted to mediate the function of distinct transcriptional activators for a variety of gene promoters and RNA polymerases. TAF12 interacts directly with TBP as well as with TAF2I. Two transcript variants encoding the same protein have been found for this gene. [provided by RefSeq, Sep 2008]

Product images:



Circular map for RG202055