

Product datasheet for **RG202045**

Calpain 5 (CAPN5) (NM_004055) Human Tagged ORF Clone

Product data:

Product Type:	Expression Plasmids
Product Name:	Calpain 5 (CAPN5) (NM_004055) Human Tagged ORF Clone
Tag:	TurboGFP
Symbol:	CAPN5
Synonyms:	ADNIV; HTRA3; nCL-3; VRNI
Mammalian Cell Selection:	Neomycin
Vector:	pCMV6-AC-GFP (PS100010)
E. coli Selection:	Ampicillin (100 ug/mL)



[View online »](#)

ORF Nucleotide Sequence:

>RG202045 representing NM_004055
 Red=Cloning site Blue=ORF Green=Tags(s)

TTTTGTAATACGACTCACTATAGGGCGGCCGGGAATTCGTCGACTGGATCCGGTACCGAGGAGATCTGCC
 GCC**GCGATCGCC**

ATGTTCTCGTGTGTGAAGCCCTATGAGGACCAGAACTACTCAGCCCTGAGGCGGGACTGCCGGCGCAGGA
 AGGTGCTCTTCGAGGACCCCTCTCCCGCCACTGACGACTCACTCTACTATAAGGGCAGCGCCGGGGCC
 CGCGTACAGTGGAAGCGACCCAAGGGCATCTGCGAGGACCCCGCCTCTTTGTGGATGGCATCAGCTCC
 CACGACCTGCACCAGGGCCAGGTGGGCAACTGCTGGTTTGTGGCAGCCTGCTCGTCACTTGCCTCCCGGG
 AGTCGCTGTGGCAAAAGGTCATCCAGACTGGAAGGAGCAGGAATGGGACCCGAAAAGCCCAACGCCTA
 CGCGGGCATCTTCCACTTCCACTTCTGGCGCTTCGGGGAATGGGTGGACGTGGTCATCGATGACCGGCTG
 CCCACAGTCAACAACCAGCTCATCTACTGCCACTCCAACCTCCGCAATGAGTTTTGGTGCGCCCTAGTGG
 AGAAGGCCTATGCCAACTGGCAGGCTGTTACCAGGCCCTGGATGGAGGCAACACAGCAGACGACTGGT
 GGACTTACGGGTGGTGTCTGAGCCCATCGACTGACCGAGGGTGACTTTGCCAACGATGAGACTAAG
 AGGAACCACTCTTTGAGCGCATGTTAAAGGTGCACAGCCGGGGCGGCCCTCATCAGTGCCTCCATCAAGG
 CAGTGACAGCAGCTGACATGGAGGCCCGCTGGCGTGGCGCTGGTAAAGGGCCACGCATACGCCGTAC
 TGATGTGCGCAAGGTGCGCTGGGCCACGGCTACTGGCCTTCTTCAAGTCAGAGAAGTTGGACATGATC
 CGCCTGCGCAACCCCTGGGGCAGCGGGAGTGGAAACGGGCCCTGGAGTGACACCTCGGAGGAGTGGCAGA
 AAGTGAGCAAGAGTGAGCGGGAGAAGATGGGTGTACCGTGCAGGACGACGGTGAATTTGGATGACCTT
 CGAGGACGTGTCCGGTACTTACCGACATCATCAAGTCCCGCTGATCAACACATCCCACCTGAGCATC
 CACAAGACGTGGGAGGAGGCCCGCTGCATGGCGCTGGACGCTGCATGAGGACCCGCGACAGAACCGCG
 GTGGCGGCTGCATCAACCACAAGGACACTTCTCCAGAACCACAGTACATCTTCAAGTCAAGAAGC
 AGAAGATGAAGTCTGATCTGCATCCAGCAGCGGCCAAAGCGGTCTACCGCCGGGAGGGCAAGGGTGAG
 AACCTGGCCATTGGCTTTGACATCTACAAGGTGGAGGAGAACCAGCCAGTACCGCATGCACAGCCTGCAGC
 ACAAGGCCCGCAGCTCCATCTACATCAACTCACGACGCTCTTCTGCGCACCGACCGCCGAGGGCCG
 CTATGTATCATCCCCACAACCTTCGAGCCAGGCCACACTGGCGAGTTCTGCTCCGAGTCTTCACTGAT
 GTGCCCTCCAACCTGCCGGGAGCTGCGCTGGATGAGCCCCACACACCTGCTGGAGCTCCCTCTGTGGCT
 ACCCCCAGCTGGTGACCCAGGTACATGCTCTGGGAGCTGCTGGCCTCAAGGACTCCCCAACAGGGGCTAA
 CTCTTATGTGATCATCAAGTGTGAGGGAGACAAAGTCCGCTCGGCTGTGCAGAAGGGCACCTCCACACCA
 GAGTACAATGTGAAAGGCATCTTCTACCGAAGAAGCTGAGCCAGCCCATCACTGTACAGGTCTGGAACC
 ACCGAGTCTGAAGGATGAATTTCTGGCCAGGTGCACCTAAAGGCTGACCCGGACAACCTCCAGGCCCT
 GCATACCTCCACCTCCGGGACCGAAATAGCCGGCAGCCAGCAACCTGCCAGGCACTGTGGCCGTGCAC
 ATTCTCAGCAGCACTCCCTCATGGCTGTC

ACGCGTACGCGGCCGCTCGAG - GFP Tag - GTTTAA

Protein Sequence:

>RG202045 representing NM_004055
 Red=Cloning site Green=Tags(s)

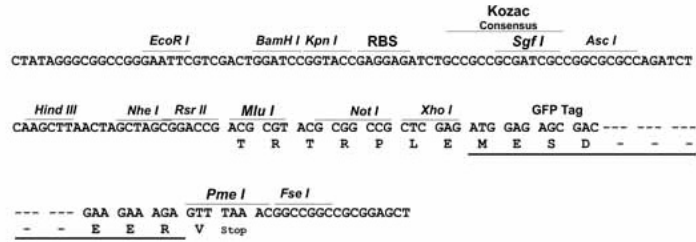
MFSCVKPYEDQNYALSRRDCRRRKVLFEDPLFPATDDSLYYKGTGPAVRWKRKPGICEDPRLFVDGISS
 HDLHQGQVGNCFVAACSSLASRESLWQKVIPDWKEQEWDPKPNAYAGIFHFHFRFGEWVDVVIDDRL
 PTVNNQLIYCHSNRNEFWCALVEKAYAKLAGCYQALDGGNTADALVDF TGGVSEPIDL TEGDFANDETK
 RNQLFERMLKVHSRGLISASIKAVTAADMEARLACGLVKGHAYAVTDVRKVRLGHLLAFFKSEKLDMI
 RL RNPWGEREWGWPWSDTSEEWQKVSEREMGVTVQDDGEFWMTFEDVCRYFTDI IKCRVINTSHLSI
 HKTWEEARLHGAWTLHEDPRQNRGGCINHKDTFFQNPQYIFEVKKPEDEVLICIQRPKRSTRREGKGE
 NLAIGFDIYKVEENRQYRMHSLQHKAASSIYINSRSVFLRTDQPEGRYVIIPFTFEPGHTGEFLLRVFTD
 VPSNCRELRLDEPPHTCWSSLCGYQLVTQVHVLGAAGLKDSPTGANSYVI IKCEGDKVRSVAVQKGTSTP
 EYNVKGIFYRKKLSQPITVQVWVHRVLDKDFLQVHLKADPNLQALHTLHLRDRNSRQPSNLPGTVAHV
 ILSSTSLMAV

TRTRPLE - GFP Tag - V

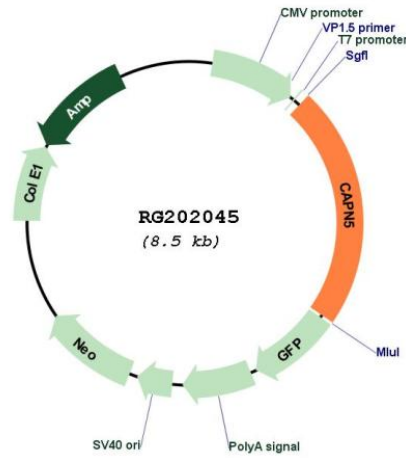
Restriction Sites: SgfI-MluI

Cloning Scheme:

Cloning sites used for ORF Shutting:



Plasmid Map:



ACCN: NM_004055

ORF Size: 1920 bp

OTI Disclaimer:	The molecular sequence of this clone aligns with the gene accession number as a point of reference only. However, individual transcript sequences of the same gene can differ through naturally occurring variations (e.g. polymorphisms), each with its own valid existence. This clone is substantially in agreement with the reference, but a complete review of all prevailing variants is recommended prior to use. More info
OTI Annotation:	This clone was engineered to express the complete ORF with an expression tag. Expression varies depending on the nature of the gene.
Components:	The ORF clone is ion-exchange column purified and shipped in a 2D barcoded Matrix tube containing 10ug of transfection-ready, dried plasmid DNA (reconstitute with 100 ul of water).
Reconstitution Method:	<ol style="list-style-type: none">1. Centrifuge at 5,000xg for 5min.2. Carefully open the tube and add 100ul of sterile water to dissolve the DNA.3. Close the tube and incubate for 10 minutes at room temperature.4. Briefly vortex the tube and then do a quick spin (less than 5000xg) to concentrate the liquid at the bottom.5. Store the suspended plasmid at -20°C. The DNA is stable for at least one year from date of shipping when stored at -20°C.
RefSeq:	NM_004055.5
RefSeq Size:	3275 bp
RefSeq ORF:	1923 bp
Locus ID:	726
UniProt ID:	O15484
Cytogenetics:	11q13.5
Domains:	C2, Calpain_III
Protein Families:	Druggable Genome, Protease
Gene Summary:	Calpains are calcium-dependent cysteine proteases involved in signal transduction in a variety of cellular processes. A functional calpain protein consists of an invariant small subunit and 1 of a family of large subunits. CAPN5 is one of the large subunits. Unlike some of the calpains, CAPN5 and CAPN6 lack a calmodulin-like domain IV. Because of the significant similarity to Caenorhabditis elegans sex determination gene tra-3, CAPN5 is also called as HTRA3. [provided by RefSeq, Jul 2008]