

## Product datasheet for **RG202020**

### Matrin 3 (MATR3) (NM\_199189) Human Tagged ORF Clone

#### Product data:

Product Type:	Expression Plasmids
Product Name:	Matrin 3 (MATR3) (NM_199189) Human Tagged ORF Clone
Tag:	TurboGFP
Symbol:	MATR3
Synonyms:	ALS21; MPD2; VCPDM
Mammalian Cell Selection:	Neomycin
Vector:	pCMV6-AC-GFP (PS100010)
E. coli Selection:	Ampicillin (100 ug/mL)



[View online »](#)

**ORF Nucleotide Sequence:**

>RG202020 representing NM\_199189  
 Red=Cloning site Blue=ORF Green=Tags(s)

TTTTGTAATACGACTCACTATAGGGCGGCCGGAATTCGTGACTGGATCCGGTACCGAGGAGATCTGCC  
 GCC**CGGATCGCC**

ATGTCCAAGTCATTCCAGCAGTCATCTCTCAGTAGGGACTCACAGGGTCATGGGCGTGACCTGTCTGCGG  
 CAGGAATAGGCCTTCTTGCTGCTGCTACCCAGTCTTTAAGTATGCCAGCATCTCTTGGAAGGATGAACCA  
 GGGTACTGCACGCCTTGCTAGTTAATGAATCTTGGAATGAGTTCTTCATTGAATCAACAAGGAGCTCAT  
 AGTGCAGTGTCTTCTGCTAGTACTTCTCCATAATTTGCAGTCTATATTTAACATTGGAAGTAGAGGTC  
 CACTCCCTTTATCTTCTCAACACCGTGGAGATGCAGACCAGGCCAGTAACATTTTGGCCAGCTTTGGTCT  
 GTCTGCTAGAGACTTAGATGAAGTGAAGTGTATCCAGAGGACAAGATTACTCCTGAGAATTTGCCCAA  
 ATCCTTCTACAGCTTAAAAGGAGGAGAAGTGAAGAAGGCCCTACCTTGAGTTATGGTAGAGATGGCAGAT  
 CTGCTACACGGGAGCCACCATACAGAGTACCTAGGGATGATTGGGAAGAAAAAGGCACTTTAGAAGAGA  
 TAGTTTTGATGATCGTGGTCTAGTCTCAACCCAGTGTGATTATGACCATGGAAGTCGTCTCAAGAA  
 TCTGGTTATTATGACAGAATGGATTATGAAGATGACAGATTAAGAGATGGAGAAAGGTGTAGGGATGATT  
 CTTTTTTTGGTGAGACCTCGCATAACTATCATAAATTTGACAGTGAAGTATGAGAGAAATGGGACGTGGTCC  
 TGGCCCTTACAAGAGAGATCTCTTTTGGAAAAAGAGAGGCGCTCCTCCAAGTAGCAATATTGAAGAC  
 TTCCATGGACTCTTACCGAAGGGTTATCCCATCTGTGCTCTATATGTGATTTGCCAGTTCATTCTAATA  
 AGGAGTGGAGTCAACATATCAATGGAGCAAGTCAAGTCGTCGATGCCAGCTTCTTCTTGAATCTACCC  
 AGAATGGAATCCTGACAATGATACAGGACACACAATGGGTGATCCATTCTGTTGCAGCAGTCTACAAAT  
 CCAGCACAGGAATCTGGGACCTCCACCTCCCTCATTTTCATCTTGGGGGACCAGCAGTTGGACCAAGAG  
 GAAATCTGGGTGCTGAAATGGAACCTGCAAGGACCTAGACACATGCAGAAAGCCAGATGGAAACTAG  
 CAGAGTTGTTACATCATGGATTTTCAACGAGGAAAAAAGTTGAGATACCAGCTATTACAGCTGGTAGAA  
 CCATTTGGAGTCAATTTCAATCATCTGATTCTAAATAAAATTAATGAGGCATTTATTGAAATGGCAACCA  
 CAGAGGATGCTCAGGCCGAGTGGATTATTACACAACCACACCAGCGTTAGTATTTGGCAAGCCAGTGAG  
 AGTTTCATTTATCCAGAAGTATAAAAGAATAAAGAAACCTGAAGGAAAGCCAGATCAGAAGTTTGATCAA  
 AAGCAAGAGCTTGGACGTGTGATACATCTCAGCAATTTGCCGCTTCTGGCTATTCTGATAGTGTCTTTC  
 TCAAGCTTGTGAGCCTTATGGGAAAAAAGAAATACATATTGATGAGGATGAAAAGTCAGGCTTTTAT  
 TGAGATGGAGACAAGAGAAGATGCAATGGCAATGGTTGACCATTGTTGAAAAAGCCCTTTGGTTTCAG  
 GGGAGATGTGTGAAGTTGACCTGTCTGAGAAATATAAAAACTGTTCTGAGGATTCCAAACAGAGGCA  
 TTGATTTACTGAAAAAGATAAATCCCGAAAAAGATCTTACTCTCCAGATGGCAAAGAATCTCCAAGTGA  
 TAAGAAATCCAAAAGTATGGTTCCAGAAAGACTGAGAGTTCAACCGAAGGTAAGAAACAAGAGAGAAG  
 TCCGGTGAAGATGGTGAGAAAGACACAAAGGATGACCAGACAGAGCAGGAACCTAATATGCTTCTTGAAT  
 CTGAAGATGAGCTACTTGTAGATGAAGAAGAAGCAGCAGCACTGCTAGAAAGTGGCAGTTCAGTGGGAGA  
 CGAGACCGATCTTGCTAATTTAGGTGATGTGGCTTCTGATGGGAAAAAGGAACCATCAGATAAAGCTGTG  
 AAAAAAGATGGAAGTCTTCAGCAGCAGCAAAGAAAAAGCTTAAAAAGGTGGACAAGATCGAGGAACTTG  
 ATCAAGAAAACGAAGCAGCGTTGGAAAAAGAAATTAATAAAGTGAAGAAAACACAGAACCAGGTGCTGAATC  
 TTCTGAGAACGCTGATGATCCCAACAAAGATACAAGTGAAGAACGCAGATGGTCAAAGTATGAGAAACAAG  
 GACGACTATACAATCCCAGATGAGTATAGAATTGGACCATATCAGCCCAATGTTCTCTGTTGATAGACT  
 ATGTGATACCTAAAACAGGGTTTTACTGTAAGCTGTGTTCACTCTTTTATACAAATGAAGAAGTTGCAAA  
 GAATACTCATTGCAGCAGCCTTCTCATTATCAGAAATTAAGAAATTTCTGAATAAATTGGCAGAAGAA  
 CGCAGACAGAAGAAGGAAACT

**ACGCGT**ACGCGGCCGCTCGAG - GFP Tag - GTTTAA

**Protein Sequence:** >RG202020 representing NM\_199189  
 Red=Cloning site Green=Tags(s)

```

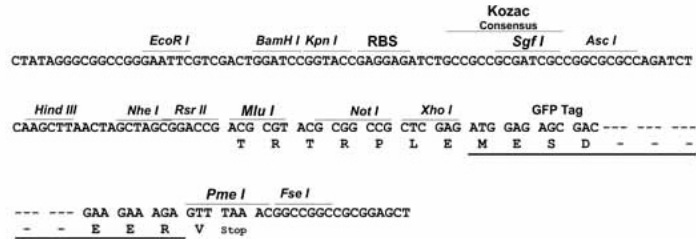
MSKSFQQSSLSRDSQGHGRDLSAAGIGLLAAATQSL SMPASLGRMNQGTARLASLMNLGMSSSLNQQGAH
SALSSASTSSHNLQSI FNI GSRGPLPLSSQHRGDADQASNILASFGLSARDLDEL SRYPEDKITPENLPQ
ILLQLKRRRTEEGPTLSYGRDGRSATREPPYRVPRDDWEEKRHFRRDSFDDRGPSLNPVLDYDHGSRSQE
SGYYDRMDYEDDRLRDGERCRDSSFGETSHNYHKFDSEYERMGRGPGPLQERSLFEKKRGAPPSSNIED
FHGLLPKGYPHLCSICDLPVHSNKEWSQHINGASHSRRCQLLEIYPEWNPNDTGHMTGDPFMLQQSTN
PAPGILGPPPSFHLGGPAVGPRGNLGAGNGNLQGPRHMQKGRVETSRVVHIMDFQRGKNLRYQLLQQLVE
PFGVISNHLILNKINEAFIEMATTEDAQAADVYYTTTPALVFGKPVRVHLSQKYKRIKKPEGKPDQKFDQ
KQELGRVIHLSNLPHSGYSDSAVLKLAEPYGKIKNYILMRMKSQAFIEMETREDAMAMVDHCLKKALWFQ
GRCVKVDLSEKYKLVLRIPNRGBIDLLKKDKSRKRSYSPDGKESPSDKKSKTDGSQKTESSTEGKEQEEK
SGEDGEKDTKDDQTEQEPNMLLESEDELLVDEEEAAALLESGSSVGDETDLANLGDVASDGKKEPSDKAV
KKDGSASAAA KKKLKKVDKIEELDQENEAALENGIKNEENTEPGAESSENADDPNKDTSENADGQSDENK
DDYTIPDEYRIGPYQPNVPVGI DYVIPKTGFYCKLCSLFYTNEEVAKNTHCSSLPHYQK LKKFLNKLAE
RRQKKET
  
```

TRTRPLE - GFP Tag - V

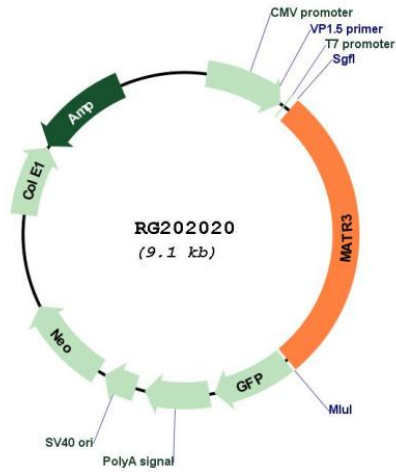
**Restriction Sites:** Sgfl-MluI

Cloning Scheme:

Cloning sites used for ORF Shutting:



Plasmid Map:



<b>ACCN:</b>	NM_199189
<b>ORF Size:</b>	2541 bp
<b>OTI Disclaimer:</b>	<p>Due to the inherent nature of this plasmid, standard methods to replicate additional amounts of DNA in E. coli are highly likely to result in mutations and/or rearrangements. Therefore, OriGene does not guarantee the capability to replicate this plasmid DNA. Additional amounts of DNA can be purchased from OriGene with batch-specific, full-sequence verification at a reduced cost. Please contact our customer care team at <a href="mailto:custsupport@origene.com">custsupport@origene.com</a> or by calling 301.340.3188 option 3 for pricing and delivery.</p> <p>The molecular sequence of this clone aligns with the gene accession number as a point of reference only. However, individual transcript sequences of the same gene can differ through naturally occurring variations (e.g. polymorphisms), each with its own valid existence. This clone is substantially in agreement with the reference, but a complete review of all prevailing variants is recommended prior to use. <a href="#">More info</a></p>
<b>OTI Annotation:</b>	This clone was engineered to express the complete ORF with an expression tag. Expression varies depending on the nature of the gene.
<b>Components:</b>	The ORF clone is ion-exchange column purified and shipped in a 2D barcoded Matrix tube containing 10ug of transfection-ready, dried plasmid DNA (reconstitute with 100 ul of water).
<b>Reconstitution Method:</b>	<ol style="list-style-type: none"><li>1. Centrifuge at 5,000xg for 5min.</li><li>2. Carefully open the tube and add 100ul of sterile water to dissolve the DNA.</li><li>3. Close the tube and incubate for 10 minutes at room temperature.</li><li>4. Briefly vortex the tube and then do a quick spin (less than 5000xg) to concentrate the liquid at the bottom.</li><li>5. Store the suspended plasmid at -20°C. The DNA is stable for at least one year from date of shipping when stored at -20°C.</li></ol>
<b>RefSeq:</b>	<a href="#">NM_199189.2</a> , <a href="#">NP_954659.1</a>
<b>RefSeq Size:</b>	4031 bp
<b>RefSeq ORF:</b>	2544 bp
<b>Locus ID:</b>	9782
<b>UniProt ID:</b>	<a href="#">P43243</a>
<b>Cytogenetics:</b>	5q31.2
<b>Gene Summary:</b>	<p>This gene encodes a nuclear matrix protein, which is proposed to stabilize certain messenger RNA species. Mutations of this gene are associated with distal myopathy 2, which often includes vocal cord and pharyngeal weakness. Alternatively spliced transcript variants, including read-through transcripts composed of the upstream small nucleolar RNA host gene 4 (non-protein coding) and matrin 3 gene sequence, have been identified. Pseudogenes of this gene are located on chromosomes 1 and X. [provided by RefSeq, Aug 2013]</p>