

## Product datasheet for **RG201990**

### Lamin B Receptor (LBR) (NM\_002296) Human Tagged ORF Clone

#### Product data:

Product Type:	Expression Plasmids
Product Name:	Lamin B Receptor (LBR) (NM_002296) Human Tagged ORF Clone
Tag:	TurboGFP
Symbol:	Lamin B Receptor
Synonyms:	C14SR; DHCR14B; LMN2R; PHA; PHASK; TDRD18
Mammalian Cell Selection:	Neomycin
Vector:	pCMV6-AC-GFP (PS100010)
E. coli Selection:	Ampicillin (100 ug/mL)



[View online »](#)

**ORF Nucleotide Sequence:**

>RG201990 representing NM\_002296  
 Red=Cloning site Blue=ORF Green=Tags(s)

TTTTGTAATACGACTCACTATAGGGCGGCCGGAATTCGTCGACTGGATCCGGTACCGAGGAGATCTGCC  
 GCC**GCGATCGCC**

ATGCCAAGTAGGAAATTTGCCGATGGTGAAGTGGTGAAGAGTTCGATGGCCTGGGAGTTCACCTTTATTATG  
 AAGTAGAAATTCGAGCCACGACAGCACCTCCAGCTTTACACTGTGAAGTATAAAGATGGAACAGAGCT  
 TGAATTGAAAGAGAATGATATTAAGCCTTAACCTTCTTTAGGCAAAGGAAAGGTGGCTCAACTCCAGT  
 TCCCTTCCAGACGCGGAGGGAGTCGATCAAGGTCACGCTCCCGATCCCTGGTCGACCCTAAAAGTG  
 CCCGCCGATCTGCTTCTGCTTCCACCAGGCCGACATTAAGGAAGCAAGGAGGGAAGTGAAGTTAAATT  
 GACTCCGCTGATTCTGAAGCCATTTGAAATAGCATCAGCAGATATAATGGGAGCCTGAGCATATTGAG  
 AGAAATGACGCACCTCATAAAAAACACAGGAAAAATTCAGTTTGTCAAGAAGCAGTTACATAGCAA  
 CACAGTATAGCCTTCGTCGAAGAAGAGAAGAAGTCAAATTAAGAAAGTATTCTAAGGAAGAAAAATA  
 CGTTGCAAAGAAGTGGCAGTGAGAACCTTTGAAGTGACCCCATCCGGGCAAAGGACTTGGAGTTTGGG  
 GGAGTACCTGGTGTGTTTCTCATCATGTTTGGCCTGCCTGTTCCTTCTCCTGTTGCTGTTGATGTGTA  
 AACAGAAAGATCCAGTCTTCTGAATTTCCCTCCTCCTTTGCCAGCTTTGTATGAGTTATGGGAAACCG  
 AGTATTTGGGGTCTACCTCCTGTGGTTTTGATTCAAGTCTGTCTACCTACTGCCAATTGAAAGGTT  
 GTAGAAGAACGCCTCTTATTGATGGAAGAAGACTCAAGTATAGATTAATGGATTCTATGCTTTTATCC  
 TGACATCTGCAGTCATCGGAACATCTCTTCCAGGGCGTAGAGTTTCATTACGTGTACAGTCATTTTCT  
 TCAGTTTGCACCTGCGGCCACTGTTTTTGTGTGGTCTTGAGTGTGTATCTACATGCGCTCTTTGAAA  
 GCGCCCCGGAATGACCTGTCGCTGCCAGCTCTGAAATGCTGTCTATGATTTCTTATTGGCCGTGAAT  
 TAAACCCTCGAATTGGTACTTTTGTACTCAAATACTTTTGTGAATTGCGCCCCGGATTGATTGGATGGGT  
 GGTTATTAACCTGGTGTGCTTTTGGCTGAAATGAAATACAGGACCGCGCTGTTCCATCCTTGGCCATG  
 ATTTTAGTTAATAGTTTCCAGCTTCTCTATGTGGTGGATGCTCTGGAATGAGGAAGCGTTGTTGACGA  
 CCATGGACATCATCCACGATGGATTTGGATTGATGCTGGCTTTTGGAGACTTGGTGTGGGTTCCCTTTAT  
 TTACAGCTTCCAAGCCTTTTATTAGTCAGTCATCCAAATGAAGTGTCTTGGCCAATGGCTTCTCTAATT  
 ATTGTTCTGAACTTTGTGGTTATGTAATCTCCGAGGTGCAAATTCAGAAAAATGCATTCCGGAAAA  
 ATCCCAGTGATCCAAAGCTTGCACATTTAAAACCATTCACTTCAACGGGAAAAATCTTCTAGTTTC  
 TGGATGGTGGGCTTTGTTGCCACCCCAATTACTTGGGTGATCTCATCATGGCCTTGGCGTGGTCCCTC  
 CCATGTGGTTTTAACACATTCTGCCTTATTTCTACATAATTTATTTACCATGTTGCTTGTCCACCGAG  
 AAGCTCGTGACGAGTACCACTGTAAAGAAGAAATACGGCGTGGCTTGGGAAAAGTACTGTCAGCGTGTGCC  
 CTACCGTATATTTCCATACATCTAC

**ACGCGTACGCGGCCGCTCGAG** – GFP Tag – GTTTAA

**Protein Sequence:**

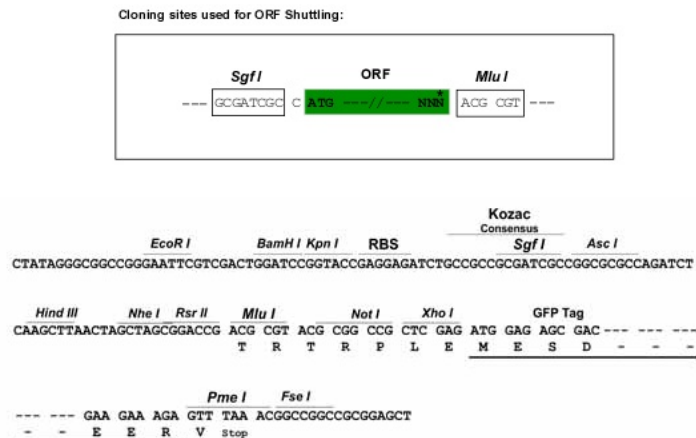
>RG201990 representing NM\_002296  
 Red=Cloning site Green=Tags(s)

MPSRKFADGEVVRGRWPGSSLYEVEILSHDSTSQLYTVKYKDGTELELKENDIKPLTSFRQRKGGSTSS  
 SPSRRRGSRSRSRSPGRPPKSARRSASASHQADIKEARREVEVKLTPLILKPFNGNSISRYNGEPEHIE  
 RNDAPHKNTQEKFSLSQESSYIATQYSLRPREEVKLKEIDSKEEKYVAKELAVRTFEVTPIRAKDLEFG  
 GVPGVFLIMFGLPVFLFLLLMCKQKDPSSLNFPPLPALYELWETRVFGVYLLWFLIQVLFYLLPIGKV  
 VEGTPLIDGRRLKYRLNGFYAFILTSAVIGTSLFQGVFHYVYSHFLQFALAATVFCVVLVSVYLYMRSLK  
 APRNDLSPASSGNAVYDFFIGRELNPRIGTDLKYFCELRPGLIGWVVINLVMLLAEMKIQDRAVPSLAM  
 ILVNSFQLLYVVDALWNEEALLTMDIIHDGFGFMLAFGDLVWVPFIYSFQAFYLVSHPNVSWPMASLI  
 IYVLCGYVIFRANSQKNAFRKNPSDPKLAHLKTIHTSTGKNLLVSGWVGFRHPNYLGDILMALAWSL  
 PCGFNHILPYFYIIYFTMLLVHREARDEYHCKKYGVAWEKYCQRPYRIFPYIY

**TRTRPLE** – GFP Tag – V

**Restriction Sites:**

Sgfl-MluI

**Cloning Scheme:**


**ACCN:** NM\_002296

**ORF Size:** 1845 bp

**OTI Disclaimer:** The molecular sequence of this clone aligns with the gene accession number as a point of reference only. However, individual transcript sequences of the same gene can differ through naturally occurring variations (e.g. polymorphisms), each with its own valid existence. This clone is substantially in agreement with the reference, but a complete review of all prevailing variants is recommended prior to use. [More info](#)

**OTI Annotation:** This clone was engineered to express the complete ORF with an expression tag. Expression varies depending on the nature of the gene.

**Components:** The ORF clone is ion-exchange column purified and shipped in a 2D barcoded Matrix tube containing 10ug of transfection-ready, dried plasmid DNA (reconstitute with 100 ul of water).

**Reconstitution Method:**

1. Centrifuge at 5,000xg for 5min.
2. Carefully open the tube and add 100ul of sterile water to dissolve the DNA.
3. Close the tube and incubate for 10 minutes at room temperature.
4. Briefly vortex the tube and then do a quick spin (less than 5000xg) to concentrate the liquid at the bottom.
5. Store the suspended plasmid at -20°C. The DNA is stable for at least one year from date of shipping when stored at -20°C.

**RefSeq:** [NM\\_002296.4](#)

**RefSeq Size:** 3806 bp

**RefSeq ORF:** 1848 bp

**Locus ID:** 3930

**UniProt ID:** [Q14739](#)

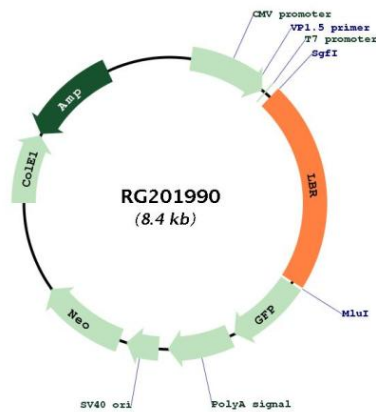
**Cytogenetics:** 1q42.12

**Domains:** ERG4\_ERG24, TUDOR

**Protein Families:** Druggable Genome, Transmembrane

**Gene Summary:** The protein encoded by this gene belongs to the ERG4/ERG24 family. It localized in the nuclear envelope inner membrane and anchors the lamina and the heterochromatin to the membrane. It may mediate interaction between chromatin and lamin B. Mutations of this gene has been associated with autosomal recessive HEM/Greenberg skeletal dysplasia. Alternative splicing occurs at this locus and two transcript variants encoding the same protein have been identified. [provided by RefSeq, Jul 2008]

**Product images:**



Circular map for RG201990