

Product datasheet for **RG201989**

EPCAM (NM_002354) Human Tagged ORF Clone

Product data:

Product Type:	Expression Plasmids
Product Name:	EPCAM (NM_002354) Human Tagged ORF Clone
Tag:	TurboGFP
Symbol:	EPCAM
Synonyms:	DIAR5; EGP-2; EGP40; EGP314; ESA; HNPCC8; KS1/4; KSA; M4S1; MIC18; MK-1; TACSTD1; TROP1
Mammalian Cell Selection:	Neomycin
Vector:	pCMV6-AC-GFP (PS100010)
E. coli Selection:	Ampicillin (100 ug/mL)
ORF Nucleotide Sequence:	>RG201989 representing NM_002354 Red=Cloning site Blue=ORF Green=Tags(s)

TTTTGTAATACGACTCACTATAGGGCGGCCGGAATTCGTCGACTGGATCCGGTACCGAGGAGATCTGCC
GCC**CGATCGCC**

ATGGCGCCCCGCAGGTCCTCGGTTTCGGGCTTCTGCTTGCCGCGGCGACGGCGACTTTTGCCGCAGCTC
AGGAAGAATGTGTCTGTGAAAACACAAGCTGGCCGTAACCTGCTTTGTGAATAATAATCGTCAATGCCA
GTGTACTTCAGTTGGTGCACAAAATACTGTCAATTTGCTCAAAGCTGGCTGCCAAATGTTTGGTGATGAAG
GCAGAAATGAATGGCTCAAACTTGGGAGAAGAGCAAACCTGAAGGGGCCCTCCAGAACAATGATGGGC
TTTATGATCCTGACTGCGATGAGAGCGGGCTCTTAAGGCCAAGCAGTGCAACGGCACCTCCACGTGCTG
GTGTGTGAACACTGCTGGGTGAGAAGAACAGACAAGGACACTGAAATAACCTGCTCTGAGCGAGTGAGA
ACCTACTGGATCATCATTGAACTAAAACACAAAGCAAGAGAAAAACCTTATGATAGTAAAAGTTTGCGGA
CTGCACCTCAGAAGGAGATCACAAACGCGTTATCAACTGGATCCAAAATTTATCACGAGTATTTTGTATGA
GAATAATGTTATCACTATTGATCTGTTCAAAAATCTTCTCAAAAAACTCAGAATGATGTGGACATAGCT
GATGTGGCTTATTTTAAAAAGATGTTAAAGGTGAATCCTTGTTTCATTCTAAGAAAATGGACCTGA
CAGTAAATGGGGAACAACTGGATCTGGATCCTGGTCAAACCTTAAATTTATTATGTTGATGAAAAAGCACC
TGAATTCATGCAGGGTCTAAAAGCTGGTGTATTGCTGTTATTGTGGTTGTGGTGATAGCAGTTGTT
GCTGGAATTGTTGTGCTGTTATTTCCAGAAAGAAGAGAATGGCAAAGTATGAGAAGGCTGAGATAAAGG
AGATGGGTGAGATGCATAGGGAACCAATGCA

AC**GGCCCGCT**CGAG - GFP Tag - GTTTAA



[View online »](#)

Protein Sequence: >RG201989 representing NM_002354
 Red=Cloning site Green=Tags(s)

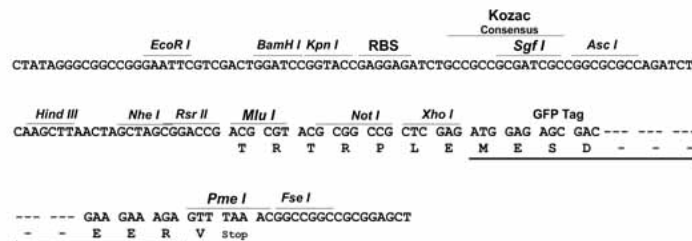
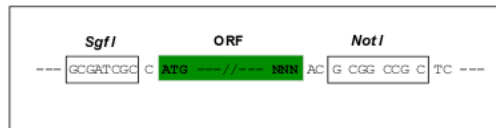
MAPPQVLAFGLLLAAATATFAAAQEEVCENYKLAVNCFVNNNRQCQCTSVGAQNTVICSKLAACKLVMK
 AEMNGSKLGRRAKPEGALQNNGLYDPDCDESGLFKAKQCNGTSTCWCVNTAGVRRTDKDEITCSEVR
 TYWIIIELKHKAREKPYDSKSLRTALQKEITTRYQLDPKFITSILYENNVITIDLQNSSQKTQNDVDIA
 DVAYYFEKDVKGESLFHSKMDLTVNQEQLDLDPGQTLIYYVDEKAPEFSMQGLKAGVIAVIVVVVIAVV
 AGIVVLVISRKKRMAKYEKAEIKEMGEMHRELNA

TRPLE - GFP Tag - V

Restriction Sites: SgfI-NotI

Cloning Scheme:

Cloning sites used for ORF Shuttling:



ACCN: NM_002354

ORF Size: 942 bp

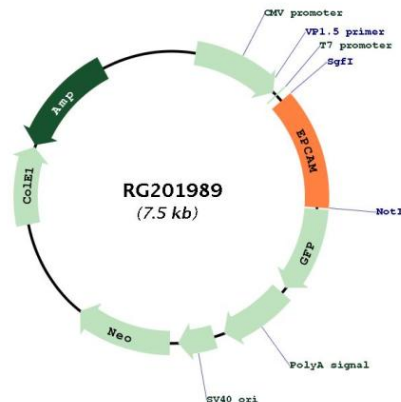
OTI Disclaimer: The molecular sequence of this clone aligns with the gene accession number as a point of reference only. However, individual transcript sequences of the same gene can differ through naturally occurring variations (e.g. polymorphisms), each with its own valid existence. This clone is substantially in agreement with the reference, but a complete review of all prevailing variants is recommended prior to use. [More info](#)

OTI Annotation: This clone was engineered to express the complete ORF with an expression tag. Expression varies depending on the nature of the gene.

Components: The ORF clone is ion-exchange column purified and shipped in a 2D barcoded Matrix tube containing 10ug of transfection-ready, dried plasmid DNA (reconstitute with 100 ul of water).

Reconstitution Method:	<ol style="list-style-type: none">1. Centrifuge at 5,000xg for 5min.2. Carefully open the tube and add 100ul of sterile water to dissolve the DNA.3. Close the tube and incubate for 10 minutes at room temperature.4. Briefly vortex the tube and then do a quick spin (less than 5000xg) to concentrate the liquid at the bottom.5. Store the suspended plasmid at -20°C. The DNA is stable for at least one year from date of shipping when stored at -20°C.
RefSeq:	NM_002354.1 , NP_002345.1
RefSeq Size:	1528 bp
RefSeq ORF:	945 bp
Locus ID:	4072
UniProt ID:	P16422
Cytogenetics:	2p21
Domains:	thyroglobulin_1
Protein Families:	ES Cell Differentiation/IPS, Transmembrane
Gene Summary:	This gene encodes a carcinoma-associated antigen and is a member of a family that includes at least two type I membrane proteins. This antigen is expressed on most normal epithelial cells and gastrointestinal carcinomas and functions as a homotypic calcium-independent cell adhesion molecule. The antigen is being used as a target for immunotherapy treatment of human carcinomas. Mutations in this gene result in congenital tufting enteropathy. [provided by RefSeq, Dec 2008]

Product images:



Circular map for RG201989