

## Product datasheet for **RG201981**

### **ABCE1 (NM\_001040876) Human Tagged ORF Clone**

#### **Product data:**

Product Type:	Expression Plasmids
Product Name:	ABCE1 (NM_001040876) Human Tagged ORF Clone
Tag:	TurboGFP
Symbol:	ABCE1
Synonyms:	ABC38; OABP; RLI; RLI1; RNASEL1; RNASELI; RNS4I
Mammalian Cell Selection:	Neomycin
Vector:	pCMV6-AC-GFP (PS100010)
E. coli Selection:	Ampicillin (100 ug/mL)



[View online »](#)

**ORF Nucleotide Sequence:**

>RG201981 representing NM\_001040876  
 Red=Cloning site Blue=ORF Green=Tags(s)

TTTTGTAATACGACTCACTATAGGGCGGCCGGAATTCGTCGACTGGATCCGGTACCGAGGAGATCTGCC  
 GCC**CGCATCGCC**

ATGGCAGACAAGTTAACGAGAATTGCTATTGTCAACCATGACAAATGTAACCTAAGAAATGTGCACAGG  
 AATGCAAAAAGAGTTGTCTGTAGTTTCAATGGGAAAATTATGCATAGAGGTTACACCCAGAGCAAAAT  
 AGCATGGATTTCCGAAACTCTTTGTATTGGTTGTGGTATCTGTATTAAGAAATGCCCTTTGGCGCCTTA  
 TCAATTGTCAATCTACCAAGCAACTTGGAAAAAGAAACCACACATCGATATTGTGCCAATGCCTTCAAAC  
 TTCACAGGTTGCCTATCCCTCGTCCAGGTGAAGTTTTGGGATTAGTTGGAACATAAGTATTGGAAAGTC  
 AACTGCTTTAAAAATTTAGCAGGAAAACAAAAGCCAAACCTTGGAAAGTACGATGATCCTCCTGACTGG  
 CAGGAGATTTTGACTTATTTCCGTGGATCTGAATTACAAAATTACTTTACAAAGATTCTAGAAGATGACC  
 TAAAAGCCATCATCAAACCTCAATATGTAGACCAGATTCCTAAGGCTGCAAAGGGGACAGTGGGATCTAT  
 TTTGGACCGAAAAGATGAAACAAAGACACAGGCAATTGTATGTCAGCAGCTTGATTTAACCCACCTAAAA  
 GAACGAAATGTTGAAGATCTTTCAGGAGGAGAGTTGCAGAGATTTGCTTGTGCTGTCTTTGCATACAGA  
 AAGCTGATATTTTCATGTTTGTAGCCTTCTAGTTACCTAGATGTCAAGCAGCGTTTAAAGGCTGCTAT  
 TACTATACGATCTCTAATAAATCCAGATAGATATATCATTGTGGTGAACATGATCTAAGTGTATTAGAC  
 TATCTCTCCGACTTCATCTGCTGTTTATATGGTGTACCAAGCGCCTATGGAGTTGCACTATGCCTTTTA  
 GTGTAAGAGAAGGCATAAACATTTTTTTGGATGGCTATGTTCCAACAGAAAACCTTGAGATTCAGAGATGC  
 ATCACTTGTTTTTAAAGTGGCTGAGACAGCAAAATGAAGAAGAAGTTAAAAAGATGTGTATGTATAAATAT  
 CCAGGAATGAAGAAAAAATGGGAGAATTTGAGCTAGCAATTGTAGCTGGAGAGTTTACAGATTCTGAAA  
 TTATGGTGTGCTGGGGGAAAATGGAACGGGTAACACGACATTTATCAGAATGCTTGTGGAAGACTTAA  
 ACCTGATGAAGGAGGAGAAGTACCAAGTTCTAAATGTCAGTTATAAGCCACAGAAAATTAGTCCCAATCA  
 ACTGGAAGTGTTCGCCAGTTACTACATGAAAAGATAAGAGATGCTTATACTACCCACAATTTGTGACCG  
 ATGTAATGAAGCCTCTGCAAATGAAAACATCATTGATCAAGAGGTGCAGACATTATCTGGTGGTGAAC  
 ACAGCGAGTAGCTTAGCCCTTTGCTTGGGCAAACCTGCTGATGTCTATTTAATTGATGAACCATCTGCA  
 TATTTGGATTCTGAGCAAAGACTGATGGCAGCTCGAGTTGTCAAACGTTTCATACTCCATGCAAAAAAGA  
 CAGCCTTTGTTGTGGAACATGACTTCATCATGGCCACCTATCTAGCGGATCGCGTCATCGTTTTTGTG  
 TGTTCCATCTAAGAACACAGTTGCAAACAGTCTCAAACCTTTTGGCTGGCATGAATAATTTTTGTCT  
 CAGCTTGAATACATTCAGAAGAGATCCAACAACCTATAGGCCACGAATAACAACCTTAATTCATTA  
 AGGATGTAGAACAAAAGAAGAGTGGAACTACTTTTTCTGGATGAT

**ACGCGTACGCGGCCGCTCGAG** – GFP Tag – GTTTAA

**Protein Sequence:**

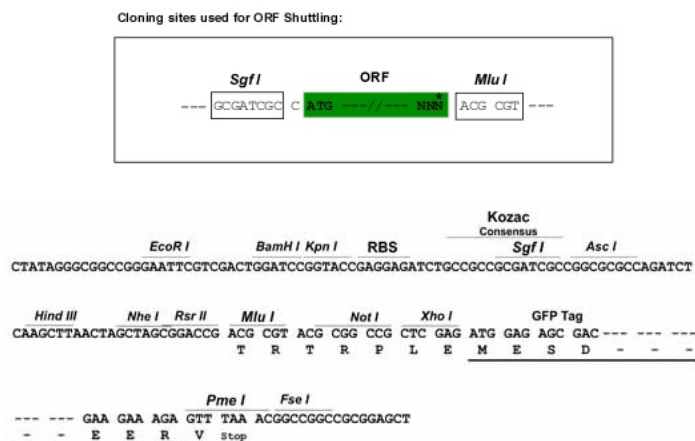
>RG201981 representing NM\_001040876  
 Red=Cloning site Green=Tags(s)

MADKLTRIAIVNHDKCKPKKCRQECKKSCPVVRMGKLCIEVTPQSKIAWISETLCIGCGICIKKCPFGAL  
 SIVNLPNLEKETTHRYCANAFKLHRLPIPRPGEVLGLVGTNGIGKSTALKILAGKQKPNLKYDDPPDW  
 QEILTYFRGSELQNYFTKILEDDLKAIKPYVDQIPKAAKGTGVSILDRKDETKQAIVCQQLDLTHLK  
 ERNVEDLSGGELQRFACAVVCIQKADIFMFDEPSSYLVDVKQRLKAAITIRSLINPDRIIVVEHDLVLD  
 YLSDFICCLYGVPAYGVVTPFVSREGINIFLDGYVPTENLFRDASLVFKVAETANEEVKKMCMYKY  
 PGMKKMGFEFELAIIVAGEFTDSEIMVMLGENGTGKTTFIRMLAGRLKPDEGGEVPLNVSYPKQKISPKS  
 TGSVRQLLHEKIRDAYTHPQFVTDVMKPLQIENIIDQEVQTLSSGELQRVALALCLGKPADVYLLIDEPSA  
 YLDSEQRLLMAARVVKRFLHAKKTAFFVVEHDFIMATYLAADRVIIVFDGVPKNTVANSPQTLLAGMKNFLS  
 QLEITFRDRPNRYRPRINKLNSIKDVEQKSGNYFFLDD

**TRTRPLE** – GFP Tag – V

**Restriction Sites:**

SgfI-MluI

**Cloning Scheme:**


**ACCN:** NM\_001040876

**ORF Size:** 1797 bp

**OTI Disclaimer:** The molecular sequence of this clone aligns with the gene accession number as a point of reference only. However, individual transcript sequences of the same gene can differ through naturally occurring variations (e.g. polymorphisms), each with its own valid existence. This clone is substantially in agreement with the reference, but a complete review of all prevailing variants is recommended prior to use. [More info](#)

**OTI Annotation:** This clone was engineered to express the complete ORF with an expression tag. Expression varies depending on the nature of the gene.

**Components:** The ORF clone is ion-exchange column purified and shipped in a 2D barcoded Matrix tube containing 10ug of transfection-ready, dried plasmid DNA (reconstitute with 100 ul of water).

**Reconstitution Method:**

1. Centrifuge at 5,000xg for 5min.
2. Carefully open the tube and add 100ul of sterile water to dissolve the DNA.
3. Close the tube and incubate for 10 minutes at room temperature.
4. Briefly vortex the tube and then do a quick spin (less than 5000xg) to concentrate the liquid at the bottom.
5. Store the suspended plasmid at -20°C. The DNA is stable for at least one year from date of shipping when stored at -20°C.

**RefSeq:** [NM\\_001040876.2](#)

**RefSeq Size:** 4191 bp

**RefSeq ORF:** 1800 bp

**Locus ID:** 6059

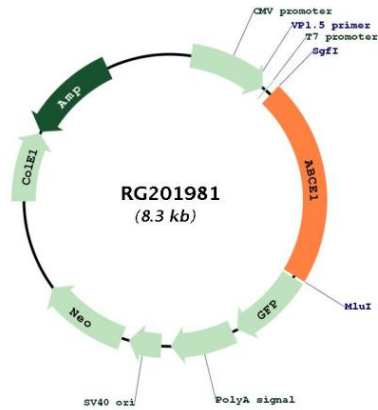
**UniProt ID:** [P61221](#)

**Cytogenetics:** 4q31.21

**Protein Families:** Druggable Genome

**Gene Summary:** The protein encoded by this gene is a member of the superfamily of ATP-binding cassette (ABC) transporters. ABC proteins transport various molecules across extra- and intra-cellular membranes. ABC genes are divided into seven distinct subfamilies (ABC1, MDR/TAP, MRP, ALD, OABP, GCN20, White). This protein is a member of the OABP subfamily. Alternatively referred to as the RNase L inhibitor, this protein functions to block the activity of ribonuclease L. Activation of ribonuclease L leads to inhibition of protein synthesis in the 2-5A/RNase L system, the central pathway for viral interferon action. Two transcript variants encoding the same protein have been found for this gene. [provided by RefSeq, Jul 2008]

**Product images:**



Circular map for RG201981