

Product datasheet for **RG201980**

SLC31A1 (NM_001859) Human Tagged ORF Clone

Product data:

Product Type: Expression Plasmids
Product Name: SLC31A1 (NM_001859) Human Tagged ORF Clone
Tag: TurboGFP
Symbol: SLC31A1
Synonyms: COPT1; CTR1
Mammalian Cell Selection: Neomycin
Vector: pCMV6-AC-GFP (PS100010)
E. coli Selection: Ampicillin (100 ug/mL)
ORF Nucleotide Sequence: >RG201980 representing NM_001859
 Red=Cloning site Blue=ORF Green=Tags(s)

TTTTGTAATACGACTCACTATAGGGCGGCCGGAATTCGTCGACTGGATCCGGTACCGAGGAGATCTGCC
 GCC**CGATCGCC**

ATGGATCATTCCACCATATGGGGATGAGCTATATGGACTCCAACAGTACCATGCAACCTTCTCACCATC
 ACCCAACCACTTCAGCCTCACACTCCCATGGTGGAGGAGACAGCAGCATGATGATGATGCCTATGACCTT
 CTACTTTGGCTTAAGAATGTGGAAGTACTGTTTTCCGGTTTGGTATCAATACAGCTGGAGAAATGGCT
 GGAGCTTTTGTGGCAGTGTCTTACTAGCAATGTTCTATGAAGGACTCAAGATAGCCCGAGAGAGCCTGC
 TGGCTAAGTCACAAGTCAGCATTGCTACAATCCATGCCTGTCCAGGACCAAAATGGAACCATCCTTAT
 GGAGACACACAAAAGTGTGGGCAACAGATGCTGAGCTTTCCTCACCTCCTGCAAAACAGTGTGCACATC
 ATCCAGGTGGTCATAAGCTACTTCTCATGCTCATCTTATGACCTACAACGGGTACCTCTGCATTGCAG
 TAGCAGCAGGGCCGGTACAGGATACTTCTTCTCAGCTGGAAGAAGGCAGTGGTGTAGTGGATATCACAGA
 GCATTGCCAT

ACGCGTACGCGGCCGCTCGAG - GFP Tag - GTTTAA

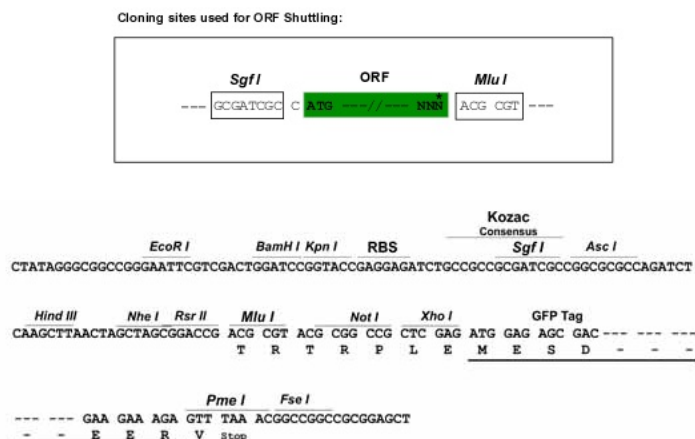
Protein Sequence: >RG201980 representing NM_001859
 Red=Cloning site Green=Tags(s)

MDHSHHMGMSYMDSNSTMQPSHHPTTSASHSHGGDSSMMMPMTFYFGFKNVELLFSGLVINTAGEMA
 GAFVAVFLAMFYEGLKIARESLRKSQVSIRYNSMPVPGPNGTILMETHKTVGQQMLSFPHLLQTVLHI
 IQVVISYFLMLIFMTYNGYLCAIVAAGAGTGYFLFSWKKAVVVDITEHCH

TRTRPLE - GFP Tag - V

Restriction Sites: Sgfl-MluI



Cloning Scheme:


ACCN: NM_001859

ORF Size: 570 bp

OTI Disclaimer: The molecular sequence of this clone aligns with the gene accession number as a point of reference only. However, individual transcript sequences of the same gene can differ through naturally occurring variations (e.g. polymorphisms), each with its own valid existence. This clone is substantially in agreement with the reference, but a complete review of all prevailing variants is recommended prior to use. [More info](#)

OTI Annotation: This clone was engineered to express the complete ORF with an expression tag. Expression varies depending on the nature of the gene.

Components: The ORF clone is ion-exchange column purified and shipped in a 2D barcoded Matrix tube containing 10ug of transfection-ready, dried plasmid DNA (reconstitute with 100 ul of water).

Reconstitution Method:

1. Centrifuge at 5,000xg for 5min.
2. Carefully open the tube and add 100ul of sterile water to dissolve the DNA.
3. Close the tube and incubate for 10 minutes at room temperature.
4. Briefly vortex the tube and then do a quick spin (less than 5000xg) to concentrate the liquid at the bottom.
5. Store the suspended plasmid at -20°C. The DNA is stable for at least one year from date of shipping when stored at -20°C.

RefSeq: [NM_001859.4](#)

RefSeq Size: 4735 bp

RefSeq ORF: 573 bp

Locus ID: 1317

UniProt ID: [O15431](#)

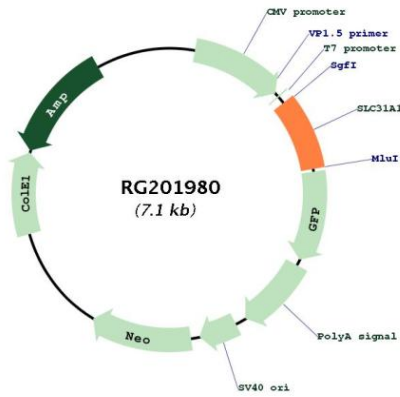
Cytogenetics: 9q32

Domains: Ctr

Protein Families: Transmembrane

Gene Summary: The protein encoded by this gene is a high-affinity copper transporter found in the cell membrane. The encoded protein functions as a homotrimer to effect the uptake of dietary copper. [provided by RefSeq, Aug 2011]

Product images:



Circular map for RG201980