

Product datasheet for **RG201968**

Josephin 1 (JOSD1) (NM_014876) Human Tagged ORF Clone

Product data:

Product Type: Expression Plasmids
Product Name: Josephin 1 (JOSD1) (NM_014876) Human Tagged ORF Clone
Tag: TurboGFP
Symbol: Josephin 1
Synonyms: dj508115.2
Mammalian Cell Selection: Neomycin
Vector: pCMV6-AC-GFP (PS100010)
E. coli Selection: Ampicillin (100 ug/mL)
ORF Nucleotide Sequence: >RG201968 representing NM_014876
 Red=Cloning site Blue=ORF Green=Tags(s)

TTTTGTAATACGACTCACTATAGGGCGCCGGGAATTCGTCGACTGGATCCGGTACCGAGGAGATCTGCC
 GCC**CGATCGCC**

ATGAGTTGTGTGCCATGGAAAGGAGACAAGGCCAAATCTGAATCATTGGAGCTGCCCCAGGCAGCACCCC
 CACAAATCTACCATGAGAAACAGCGCAGGGAGCTTTGTGCCCTCCAGCCCTCAATAACGTCTTCCAGGA
 CAGCAATGCCTTACCCGGGATACGCTGCAAGAGATTTCCAGAGTTGTCTCAAACACCATGGTGACA
 CCTCACAAGAAGAGCATGCTGGGAAATGGCAACTACGATGTGAATGTCATTATGGCAGCACTTCAGACCA
 AAGGCTATGAAGCTGTTTGGTGGGACAAGCGCAGGGATGTCGGTGTCTTGCCTCACTAACGTCATGGG
 CTTTCATCATGAATCTGCCCTCCAGCCTATGCTGGGGTCCACTGAAACTGCCCTCAAAGGCAGCACTGG
 ATCTGTGTTCCGAGAGGTGGGAGGGGCTACTACAACCTCGACTCCAAACTCAAGATGCCCGAGTGGATTG
 GAGGCGAGAGCGAGCTCAGGAAGTTTCTAAAACATCATTTGCGAGGAAAGAACTGTGAACCTCTGCTGGT
 GGTACCAGAAGAGGTAGAGGCTCATCAGAGTTGGAGGACCGATGTG

ACGCGTACGCGGCCGCTCGAG - GFP Tag - GTTTAA

Protein Sequence: >RG201968 representing NM_014876
 Red=Cloning site Green=Tags(s)

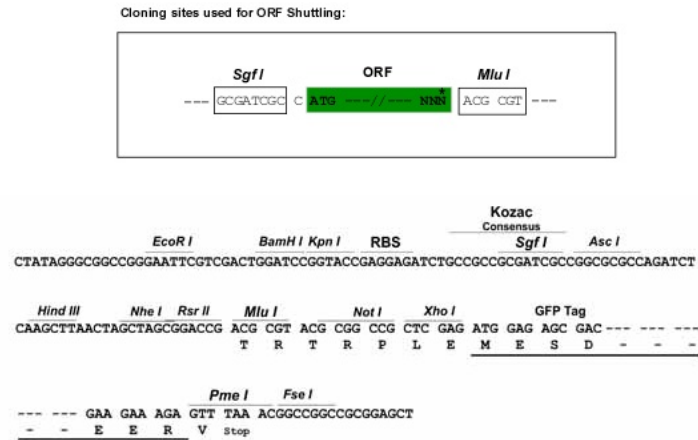
MSCVPWKGDKAKSESLELPQAAPPQIYHEKQRRELCALHALNNVFQDSNAFTRDTLQEIFQRLSPNTMVT
 PHKKSMLGNGYDQVNVIMAALQTKGYEAVWWDKRRDVGVIATNVMGFIMNLPSSLCWGPKLPLKRQHW
 ICVREVGAYYNLDSKLMPEWIGGESELRKFLKHHLRGKNCELLLVVPEEVEAHQSWRTDV

TRTRPLE - GFP Tag - V

Restriction Sites: SgfI-MluI



[View online »](#)

Cloning Scheme:


ACCN: NM_014876

ORF Size: 606 bp

OTI Disclaimer: Due to the inherent nature of this plasmid, standard methods to replicate additional amounts of DNA in E. coli are highly likely to result in mutations and/or rearrangements. Therefore, OriGene does not guarantee the capability to replicate this plasmid DNA. Additional amounts of DNA can be purchased from OriGene with batch-specific, full-sequence verification at a reduced cost. Please contact our customer care team at custsupport@origene.com or by calling 301.340.3188 option 3 for pricing and delivery.

The molecular sequence of this clone aligns with the gene accession number as a point of reference only. However, individual transcript sequences of the same gene can differ through naturally occurring variations (e.g. polymorphisms), each with its own valid existence. This clone is substantially in agreement with the reference, but a complete review of all prevailing variants is recommended prior to use. [More info](#)

OTI Annotation: This clone was engineered to express the complete ORF with an expression tag. Expression varies depending on the nature of the gene.

Components: The ORF clone is ion-exchange column purified and shipped in a 2D barcoded Matrix tube containing 10ug of transfection-ready, dried plasmid DNA (reconstitute with 100 ul of water).

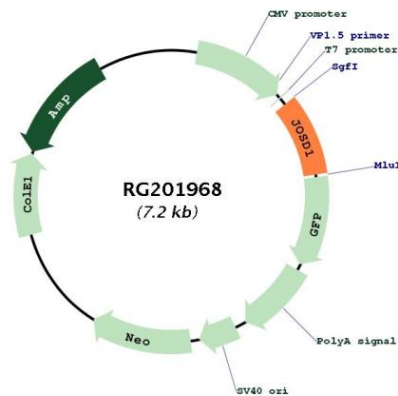
Reconstitution Method:

1. Centrifuge at 5,000xg for 5min.
2. Carefully open the tube and add 100ul of sterile water to dissolve the DNA.
3. Close the tube and incubate for 10 minutes at room temperature.
4. Briefly vortex the tube and then do a quick spin (less than 5000xg) to concentrate the liquid at the bottom.
5. Store the suspended plasmid at -20°C. The DNA is stable for at least one year from date of shipping when stored at -20°C.

RefSeq: [NM_014876.7](#)

RefSeq Size:	3207 bp
RefSeq ORF:	609 bp
Locus ID:	9929
UniProt ID:	Q15040
Cytogenetics:	22q13.1
Domains:	Josephin
Protein Families:	Druggable Genome
Gene Summary:	Deubiquitinates monoubiquitinated probes (in vitro). When ubiquitinated, cleaves 'Lys-63'-linked and 'Lys-48'-linked poly-ubiquitin chains (in vitro), hence may act as a deubiquitinating enzyme. May increase macropinocytosis and suppress clathrin- and caveolae-mediated endocytosis. May enhance membrane dynamics and cell motility independently of its catalytic activity.[UniProtKB/Swiss-Prot Function]

Product images:



Circular map for RG201968