

Product datasheet for **RG201960**

NCKAP1 (NM_013436) Human Tagged ORF Clone

Product data:

Product Type:	Expression Plasmids
Product Name:	NCKAP1 (NM_013436) Human Tagged ORF Clone
Tag:	TurboGFP
Symbol:	NCKAP1
Synonyms:	HEM2; NAP1; NAP125; p125Nap1
Mammalian Cell Selection:	Neomycin
Vector:	pCMV6-AC-GFP (PS100010)
E. coli Selection:	Ampicillin (100 ug/mL)
ORF Nucleotide Sequence:	>RG201960 representing NM_013436 Red=Cloning site Blue=ORF Green=Tags(s)

TTTTGTAATACGACTCACTATAGGGCGGCCGGAATTCGTCGACTGGATCCGGTACCGAGGAGATCTGCC
GCC**CGATCGCC**

ATGTCGGCTCAGTGCTGCAGCCAGTCAGCAGAAGCTGGCGGAGAAGCTCACCATCCTCAACGACCGGG
GCGTCGGCATGCTCACCCGCTCTACAACATCAAGAAGGCATGTGGAGACCCCAAGGCAAACCCTCA
TCTTATCGACAAAACCTGGAATCTGCTGTGAAATTCATAGTCAGAAAATTCCTGCTGTAGAAACCCG
AACAAATCAACAGCTGCACAACACAGAAAGAAAAATCAGAGATTCTGAAAAATCTGGCATTATATT
ACTTCACATTTGTAGATGTTATGGAATTAAGGACCATGTTTGTGAATTGCTGAATACTATTGACGTTT
CCAAGTCTCTTTGATATTACTGTAACCTTTGATTTAACAAGAAGTACTTAGATTTAATTATAACCTAT
ACAACACTAATGATACTGCTGTCTCGAATTGAAGAAAGGAAGCAATCATTGGATTATACAACATATGCC
ATGAAATGACTCATGGAGCAAGTGACAGAGAATACCCACGCTTGGCCAGATGATTGTGGATTATGAAA
CCCTTTAAGAAGATGATGGAAGAATTTGTACCCATAGCAAGTCTTTTCAGATGCACTAATTTCTCT
CAAATGGTATATCCTCGAAGGAATCTTTCAGCTGACCAAGTGGAGAAAATGCCAGTTATTGAGCCTCAT
GTGCACCTAGTACAATGCTTAATCCAGCACAGTCCGACACTATGCCTTGTGAATACCTCTCTTTGGATG
AATGAAAAGTGGATTATCTTTGGCTTTATTTTGTGCCATGGGATCCCTAAATACTGACGCTACAGCACT
AACCTTTGGAACTAGCTCTTCAAAGTAGCTCTTGCCTCTCTCTTTCCGGGATGAAGTTTTCCACATTC
ACAAAGCTGCAGAAGACTTATTTGTAAACATACGAGGCTATAATAAACGTTAATGACATAAGAGAATG
CAAGGAGGCGCCGTGTACATGCTGGTTCAATGCACAGAGAAAGACGCAAGTTTTTAAGATCTGCACTG
AAGGAATTGGCTACTGTCTCTCTGATCAACCTGGATTGCTAGGTCCCAAGGCACCTTTTGTTTTATGG
CATTATCCTTTGCCGATGAAATCATCTGGCTACTTCGTCATGCAGATAACATGCCAAAGAAGAGTGC
AGACGACTTTATAGATAAGCACATTGCTGAATTAATTTTACATGGAAGAACTTAGAGCACATGTGAGG
AAATACGGACCTGTAATGCAGAGGATTACGTGCAGTACCTTTCTGGCTTTGATGCTGTTGCTCCTCAAT
AACTCGTGCAGAATCTTTCTGTTTGCCTGAAGATGAATCAATCATCATGCTCTTTTGTAAACACTAT
GACTTCCCTAAGTGTAAACAAGTTGAAGATGGGGAAGTATTTGATTTTCAGAGGAATGAGATTAGATTGG



[View online >](#)

```

TTTAGGTTACAGGCATATACTAGTGTCTCAAAGGCTTCACTTGGCCTTGCAGATCACAGAGAACTTGGAA
AGATGATGAATACAATAATTTTTATACAAAAATGGTAGATTCCTTGGTGGAAATGTTGGTGGAAACATC
AGATCTCTCCATATTTTGTATAGTCGTGCTTTTGAAGAGATGTTTCAACAGTGTGGAGTTACCC
TCTCAATCAAGATACTCAATTGCATTTCCACTACTTGCCTCATTATGAGTTGCACGCATGAACAT
GTCCAGAAGAGCGACATCATATTGGAGATCGCAGTCTTTCCTTATGTAATATGTTCTAGATGAAATGGC
CAACAAGCTCGAAATCTCATCTGATATTTGCACAGAACAGTGTACCCTTAGTGACCACTGTTGCTACCC
AAGCATTTGTGCCAAAATATCAGTCAAGCAGTGAATAAGAAATCAAAAAAGCAGACTGTTAAGAAAGGGG
AACCTGAAAGGGAGAAACCAGGTGTTGAGAGCATGAGGAAAAACAGGCTGTTGTGACCAACCTTGATAA
ATTGCACACTGCCTTTCTGAGTTATGCTTCTCTATAAATTATGTACCAACATGGTGGTATGGGAACAT
ACCTTTACCCACGAGAATATTTGACTTCTCATCTGAAAATACGCTTTACCAAGTCAATTGTTGGGATGA
CTATGTATAATCAAGCCACACAGGAAATGCAAAACCTTCAGAACTTCTAACAAGTGAAGAGCATAACAT
GACCGTACTCCAGTCAATAGAAAATATGTGCAGATTGATTTACAAGAGATTTAATAATGTGCTTCTT
CAACAAACACAACATTTAGACAGTCATGGAGAGCCAACCATTACAAGTCTATACAAAATGGTATTTGG
AACTTTGTTACGACAAGTCAGCAATGGCCATATAGCATATTTTCTGCAATGAAAGCGTTTGTGAACTT
ACCTACAGAAAAATGAATTAACATTCAATGCAGAGGAATATTCTGACATATCAGAAATGAGGTCATTATCA
GAACTACTAGGCCATATGGTATGAAGTTCTAAGTGAAGCCTTATGTGGCATATTTATCACAAGTTG
CTGAACCTAAGAAACTTGTGGTGGAGAATGTTGATGTGTTAACACAAATGAGGACCAGCTTTGACAAACC
AGACCAGATGGCTGCACTGTTTTAAAGATTATCATCTGTTGACAGTGTCTTGAAGAGGATGACAATAATT
GGTGTAAATTTATCCTCCGATCATTGGCACAAGAAGCACTTAGAGATGTCTTATCCTACCACATTCCTT
TTCTTGTAAAGTTCAATGAAGATTTAAGGATCACATTCGAAGGAAACTGATATGAAGGTTGCAATGAA
TGTGTATGAGTTATCATCAGCTGCCGATTACCTTGTGAGATTGATCCTGCATTGGTCGTAGCTCTTTCT
TCACAAAAATCGAAAAACATTAGTCCAGAAGAAGAGTATAAAATGCCTGCCTTCTCATGGTGTGTTGG
CAGTTTTCTTGGCAACTGGCCAGTAAATGTGATGTCTCAGTACAGCCCTGCTATAGAAGGTTGCAAC
CAACATACATTGCTTGGCCAAAGCCATCAACCAGATTGCTGCAGCTTTGTTTACAATTCACAAGGAAGC
ATTGAAGACCGTCTTAAAGAATTTCTGGCGCTTGCATCCTCCAGTCTACTGAAAATGGCCAGGAGACAG
ATAAACTACAACAAGAAATAGAGAATCTGTTTATTTACTGCTAGATATGATTGTACAAGAACTCCATT
CCTTACAATGGATCTTTTGAATCTTGTCTTCTATGTCTTGTGAGAAATGCATACCATGCTGTCTAC
AAACAAAGTGTACATCTTCTGCA
    
```

ACGCGTACGCGGCCGCTCGAG – GFP Tag – GTTTAA

Protein Sequence:

>RG201960 representing NM_013436
 Red=Cloning site Green=Tags(s)

```

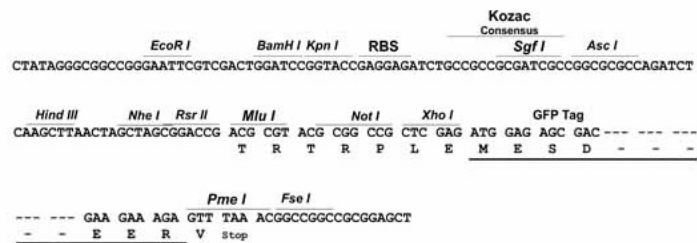
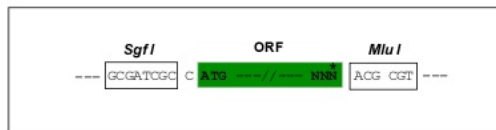
MSRSVLQPSQQKLAEKLTILNDRGVGMLTRLNYIKKACGDPKAKPSYLDKNLESVAVKFIVRKFFAVETR
NNNQQLAQLQKEKSEILKNLALYYFTFVDVMEFKDHVCELLNTIDVCQVFFDITVNFDLTKNYLDLIITY
TTLMILLSRIEERKAIIGLYNYAHEMTHGASDREYPRLGQMIVDYENPLKMMEEFVPHSKSLSDALISL
QMYYPRRNL SADQWRNAQLLSLISAPSTMLNPAQSDTMPCEYLSLDAMEKWIIFGFILCHGILNTDATAL
NLWKLALQSSSLSLFRDEVFHIHKAEDLFVNIIRGYNKRINDIRECKEAAVSHAGSMHRERRKFLRSAL
KELATVLSDPGLLGPALFVFMALSFARDEI IWLLRHADNMPKKSADDFIDKHIAELIFYMEELRAHVR
KYGPVMQRYVYVYLSGFDAVVLNQLSVCPEDESIIMSSFVNTMTSLSVKQVEDGEVDFRGMRLDW
FRLQAYTSVSKASLGLADHRELKGMNTIIFHTKMVDSLVEMLVETSLSIFCFYSRAFEKMFQCCLELP
SQSRYSIAFPLLCTHFMSCTHELCP EERHHIGDRSLSLCNMFLDEMAQARNLITDICTEQCTLSQQLP
KHCAKTI SQAVNKKSKKQTGKKGEPEREKPGVESMRKNRLVVTNLDKLHTALSELCF SINYVPMVVEH
TFTPREYLTSHLEIRFTKSI VGMTMYNQATQEI AKPSELLTSVRAYMTVLQSIENYVQIDITRVFNVLL
QQTQHLDSHGEPITISLYTNWYLETLLRQVSNHIA YFPAMKAFVNLPTENELTFNAEEYSDI SEMRSL
ELLGPYGMKFLSESLMWHISSQVAELKKLVVENVDVLTQMRTSFDKPDQMAALFKRLSSVDSVLKRMTII
GVILSFRSLAQEALRDVLSYHIPFLVSSIEDFKDHIPRETDMKVAMNVYELSSAAGLPCEIDPALVVALS
SQKSENISPEEEYKIACLLMVFVAVSLPTLASNVMSQYSPAIEGHCCNNIHCLAKAINQIAAALFTIHKGS
IEDRLKEFLALASSLLKIGQETDKTTTRNRESVYLLLDIMIVQESPFLLTMDLLESCFPYVLLRNAYHAVY
KQSVTSSA
    
```

TRTRPLE – GFP Tag – V

Restriction Sites: SgfI-MluI

Cloning Scheme:

Cloning sites used for ORF Shuttling:



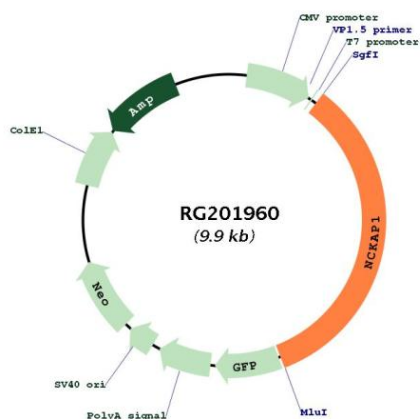
ACCN: NM_013436

ORF Size: 3384 bp

OTI Disclaimer: The molecular sequence of this clone aligns with the gene accession number as a point of reference only. However, individual transcript sequences of the same gene can differ through naturally occurring variations (e.g. polymorphisms), each with its own valid existence. This clone is substantially in agreement with the reference, but a complete review of all prevailing variants is recommended prior to use. [More info](#)

OTI Annotation:	This clone was engineered to express the complete ORF with an expression tag. Expression varies depending on the nature of the gene.
Components:	The ORF clone is ion-exchange column purified and shipped in a 2D barcoded Matrix tube containing 10ug of transfection-ready, dried plasmid DNA (reconstitute with 100 ul of water).
Reconstitution Method:	<ol style="list-style-type: none"> 1. Centrifuge at 5,000xg for 5min. 2. Carefully open the tube and add 100ul of sterile water to dissolve the DNA. 3. Close the tube and incubate for 10 minutes at room temperature. 4. Briefly vortex the tube and then do a quick spin (less than 5000xg) to concentrate the liquid at the bottom. 5. Store the suspended plasmid at -20°C. The DNA is stable for at least one year from date of shipping when stored at -20°C.
RefSeq:	NM_013436.5
RefSeq Size:	4619 bp
RefSeq ORF:	3387 bp
Locus ID:	10787
UniProt ID:	Q9Y2A7
Cytogenetics:	2q32.1
Protein Families:	Druggable Genome
Protein Pathways:	Regulation of actin cytoskeleton
Gene Summary:	Part of the WAVE complex that regulates lamellipodia formation. The WAVE complex regulates actin filament reorganization via its interaction with the Arp2/3 complex. Actin remodeling activity is regulated by RAC1. As component of the WAVE1 complex, required for BDNF-NTRK2 endocytic trafficking and signaling from early endosomes.[UniProtKB/Swiss-Prot Function]

Product images:



Circular map for RG201960