

Product datasheet for **RG201954**

NBL1 (NM_005380) Human Tagged ORF Clone

Product data:

Product Type: Expression Plasmids
Product Name: NBL1 (NM_005380) Human Tagged ORF Clone
Tag: TurboGFP
Symbol: NBL1
Synonyms: D1S1733E; DAN; DAND1; NB; NO3
Mammalian Cell Selection: Neomycin
Vector: pCMV6-AC-GFP (PS100010)
E. coli Selection: Ampicillin (100 ug/mL)
ORF Nucleotide Sequence: >RG201954 representing NM_005380
 Red=Cloning site Blue=ORF Green=Tags(s)

TTTTGTAATACGACTCACTATAGGGCGGCCGGAATTCGTCGACTGGATCCGGTACCGAGGAGATCTGCC
 GCC**CGATCGCC**

ATGCTTCGGGTCCTGGTGGGGCTGTCCTCCCTGCCATGCTACTGGTGCCCCACCACCCATCAACAAGC
 TGGCACTGTTCCAGATAAGAGTGCCTGGTGCGAAGCCAAGAACATCACCCAGATCGTGGCCACAGCGG
 CTGTGAGGCCAAGTCCATCCAGAACAGGGCGTGCCTAGGACAGTCTCAGCTACAGCGTCCCCAACACC
 TCCCACAGTCCACAGAGTCCCTGGTTCCTGACTGTGACTCCTGCATGCCAGCCAGTCCATGTGGGAGATTG
 TGACGCTGGAGTGCCCGGCCACGAGGAGGTGCCAGGGTGGACAAGCTGGTGGAGAAGATCCTGCACTG
 TAGCTGCCAGGCCTGCGCAAGGAGCCTAGTCACGAGGGGCTGAGCGTCTATGTGCAGGGCGAGGACGGG
 CCGGGATCCCAGCCCGGCACCCACCCTACCCCATCCCCACCCCATCCTGGCGGGCAGACCCCTGAGC
 CCGAGGACCCCTGGGGCCCCCACACAGAGGAAGAGGGGGCTGAGGAC

ACGCGTACGCGGCCGCTCGAG - GFP Tag - GTTTAA

Protein Sequence: >RG201954 representing NM_005380
 Red=Cloning site Green=Tags(s)

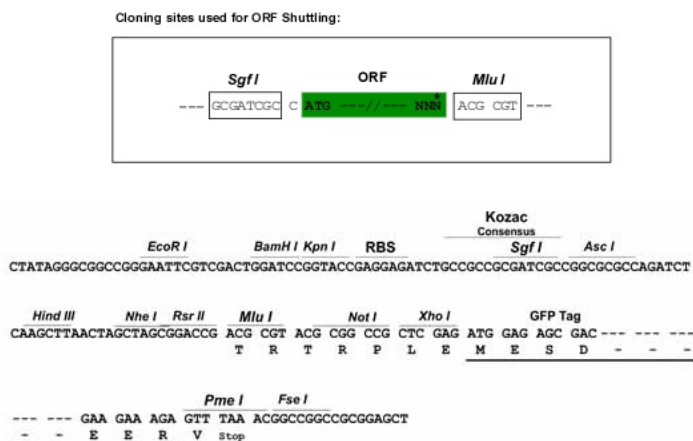
MLRVLVGAFLPAMLLAAPPINKLALFPDKSAWCEAKNITQIVGHSGCEAKSIQNRACLQCFYSVSPNT
 FPQSTESLVHCDSCMPAQSMWEIVTLECPGHEEVPRVDKLVKILHCSCQACGKEPSHEGLSVYVQGEDG
 PGSQPGTHPHPHPHPGGQTPEPEDPPGAPHTEEEGAED

TRTRPLE - GFP Tag - V

Restriction Sites: SgfI-MluI



[View online >](#)

Cloning Scheme:


ACCN: NM_005380

ORF Size: 540 bp

OTI Disclaimer: The molecular sequence of this clone aligns with the gene accession number as a point of reference only. However, individual transcript sequences of the same gene can differ through naturally occurring variations (e.g. polymorphisms), each with its own valid existence. This clone is substantially in agreement with the reference, but a complete review of all prevailing variants is recommended prior to use. [More info](#)

OTI Annotation: This clone was engineered to express the complete ORF with an expression tag. Expression varies depending on the nature of the gene.

Components: The ORF clone is ion-exchange column purified and shipped in a 2D barcoded Matrix tube containing 10ug of transfection-ready, dried plasmid DNA (reconstitute with 100 ul of water).

Reconstitution Method:

1. Centrifuge at 5,000xg for 5min.
2. Carefully open the tube and add 100ul of sterile water to dissolve the DNA.
3. Close the tube and incubate for 10 minutes at room temperature.
4. Briefly vortex the tube and then do a quick spin (less than 5000xg) to concentrate the liquid at the bottom.
5. Store the suspended plasmid at -20°C. The DNA is stable for at least one year from date of shipping when stored at -20°C.

RefSeq: [NM_005380.4](#), [NP_005371.1](#)

RefSeq Size: 2021 bp

RefSeq ORF: 546 bp

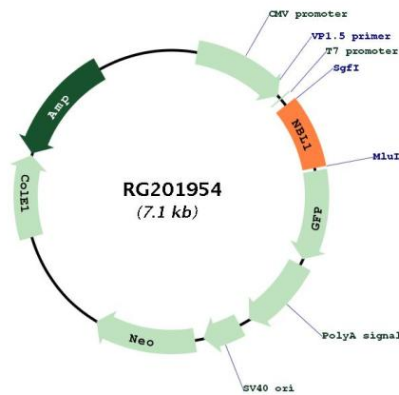
Locus ID: 4681

UniProt ID: [P41271](#)

Cytogenetics: 1p36.13
Domains: DAN, CT
Protein Families: Secreted Protein

Gene Summary: This gene product is the founding member of the evolutionarily conserved CAN (Cerberus and DAN) family of proteins, which contain a domain resembling the CTCK (C-terminal cystine knot-like) motif found in a number of signaling molecules. These proteins are secreted, and act as BMP (bone morphogenetic protein) antagonists by binding to BMPs and preventing them from interacting with their receptors. They may thus play an important role during growth and development. Alternatively spliced transcript variants have been identified for this gene. Read-through transcripts between this locus and the upstream mitochondrial inner membrane organizing system 1 gene (GenelD 440574) have been observed. [provided by RefSeq, May 2013]

Product images:



Circular map for RG201954