

Product datasheet for **RG201953**

PGEA1 (CBY1) (NM_001002880) Human Tagged ORF Clone

Product data:

Product Type: Expression Plasmids
Product Name: PGEA1 (CBY1) (NM_001002880) Human Tagged ORF Clone
Tag: TurboGFP
Symbol: CBY1
Synonyms: arb1; C22orf2; CBY; Chibby1; HS508I15A; PGEA1; PIGEA-14; PIGEA14
Mammalian Cell Selection: Neomycin
Vector: pCMV6-AC-GFP (PS100010)
E. coli Selection: Ampicillin (100 ug/mL)
ORF Nucleotide Sequence: >RG201953 representing NM_001002880
 Red=Cloning site Blue=ORF Green=Tags(s)

TTTTGTAATACGACTCACTATAGGGCGGCCGGAATTCGTCGACTGGATCCGGTACCGAGGAGATCTGCC
 GCC**CGATCGCC**

ATGCCTTTCTTTGGGAATACGTTTCAGTCCGAAGAAGACACCTCCTCGGAAGTCGGCATCTCTCCAACC
 TGCATTCTTTGGATCGATCAACCCGGGAGGTGGAGCTGGGCTTGGAAACGGATCCCGACTATGAACCT
 GGCAGGGCAAAGCCTGAAGTTTAAAAATGGCCAGTGGATAGCAGAGACAGGGGTTAGTGGCGGTGTGGAC
 CGGAGGGAGGTTTCAGCGCCTTCGAGCGGAACCCAGCAGTTGGAGGAAGAGAACAATCTCTTGCAGCTGA
 AAGTGGACATCTTATTAGACATGCTTTTCAGAGTCCACTGCTGAATCCCACTTAATGGAGAAGGAAGTGA
 TGAAGTGGAGGATCAGCCGGAAGAAAA

AG**CGGACCG**ACGCGTACGCGGCCGCTCGAG - GFP Tag - GTTTAA

Protein Sequence: >RG201953 representing NM_001002880
 Red=Cloning site Green=Tags(s)
 MPFFGNTFSPKTPPRKSASLSNLHSLDRSTREVELGLEYGSPMTNLAGQSLKFENGQWIAETGVSGGVD
 RREVQRLRRRNQLEENNLLRLKVDILLDMLSESTAESHLMKELDELRI SRKRK

SGPTRRRLE - GFP Tag - V

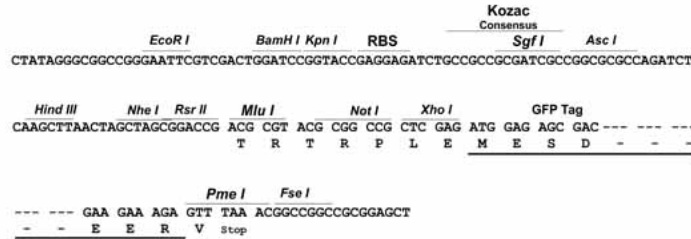
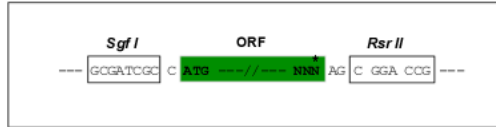
Restriction Sites: Sgfl-RsrII



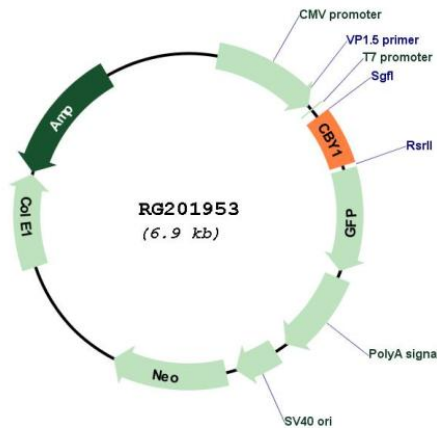
[View online »](#)

Cloning Scheme:

Cloning sites used for ORF Shuttling:



Plasmid Map:



ACCN: NM_001002880

ORF Size: 507 bp

OTI Disclaimer: The molecular sequence of this clone aligns with the gene accession number as a point of reference only. However, individual transcript sequences of the same gene can differ through naturally occurring variations (e.g. polymorphisms), each with its own valid existence. This clone is substantially in agreement with the reference, but a complete review of all prevailing variants is recommended prior to use. [More info](#)

OTI Annotation:	This clone was engineered to express the complete ORF with an expression tag. Expression varies depending on the nature of the gene.
Components:	The ORF clone is ion-exchange column purified and shipped in a 2D barcoded Matrix tube containing 10ug of transfection-ready, dried plasmid DNA (reconstitute with 100 ul of water).
Reconstitution Method:	<ol style="list-style-type: none">1. Centrifuge at 5,000xg for 5min.2. Carefully open the tube and add 100ul of sterile water to dissolve the DNA.3. Close the tube and incubate for 10 minutes at room temperature.4. Briefly vortex the tube and then do a quick spin (less than 5000xg) to concentrate the liquid at the bottom.5. Store the suspended plasmid at -20°C. The DNA is stable for at least one year from date of shipping when stored at -20°C.
RefSeq:	<u>NM_001002880.1</u> , <u>NP_001002880.2</u>
RefSeq Size:	1287 bp
RefSeq ORF:	381 bp
Locus ID:	25776
UniProt ID:	<u>Q9Y3M2</u>
Cytogenetics:	22q13.1
Protein Families:	Transcription Factors
Gene Summary:	Beta-catenin is a transcriptional activator and oncoprotein involved in the development of several cancers. The protein encoded by this gene interacts directly with the C-terminal region of beta-catenin, inhibiting oncogenic beta-catenin-mediated transcriptional activation by competing with transcription factors for binding to beta-catenin. Two transcript variants encoding different isoforms have been found for this gene. [provided by RefSeq, Jul 2008]