

Product datasheet for **RG201943**

TMEM184B (NM_012264) Human Tagged ORF Clone

Product data:

| | |
|---------------------------|---|
| Product Type: | Expression Plasmids |
| Product Name: | TMEM184B (NM_012264) Human Tagged ORF Clone |
| Tag: | TurboGFP |
| Symbol: | TMEM184B |
| Synonyms: | C22orf5; FM08; HS5O6A; HSPC256 |
| Mammalian Cell Selection: | Neomycin |
| Vector: | pCMV6-AC-GFP (PS100010) |
| E. coli Selection: | Ampicillin (100 ug/mL) |
| ORF Nucleotide Sequence: | >RG201943 representing NM_012264 Red=Cloning site Blue=ORF Green=Tags(s) |

TTTTGTAATACGACTCACTATAGGGCGGCCGGAATTCGTCGACTGGATCCGGTACCGAGGAGATCTGCC
GCC**CGATCGCC**

ATGACAGTGAGGGGGATGTGCTGGCCCCGGATCCAGCGTCGCCACGACCGCAGCAGCCTCGCCCAGCG
TCTCCGTGATCCCCGAGGGCAGCCCCACTGCCATGGAGCAGCCTGTGTTCCCTGATGACAACCGCGCTCA
GGCCATCTCTGGTTCTTCGTGTGGACGGCCCTGCTCATCACATGCCACCAGATCTACATGCACCTGCGC
TGCTACAGCTGCCCAACGAGCAGCGCTACATCGTGGCATCCTTTCATCGTCCCATCTACGCCCTTTG
ACTCCTGGCTCAGCCTCCTTCTTCCACCAACGACCAGTACTACGTGTACTTCGGCACCGTCCGCGACTG
CTATGAGGCCTTGGTCATCTATAATTTCCCTGAGCCTGTGCTATGAGTACCTAGGAGGAGAAAGTTCCATC
ATGTCCGAGATCAGAGGAAAACCCATTGAGTCCAGCTGTATGTATGGCACCTGCTGCCTCTGGGAAAGA
CTTATCCATCGGATTTCTGAGGTTCTGCAAAACAGGCCACCCTGCAGTTCTGTGTGGTGAAGCCACTCAT
GGCGGTGACACTGTGGTCTCCAGGCCTTCGGCAAGTACCGGGATGGGGACTTTGACGTACCAGTGGC
TACCTCTACGTGACCATCATCTACAACATCTCCGTGAGCCTGGCCCTCTACGCCCTTCTCTTCTACT
TCGCCACCGGGAGCTGCTCAGCCCCTACAGCCCCGTCTCAAGTTCTTCATGGTCAAGTCCGTCATCTT
TCTTTCTTCTGGCAAGGCATGCTCCTGGCCATCCTGGAGAAGTGTGGGGCCATCCCCAAATCCACTCG
GCCCGGTGTGGTGGCGAGGGCACCGTGGCTGCCGGTACCAGGACTTCATCATCTGTGTGGAGATGT
TCTTTGCAGCCTGGCCCTGCGGCACGCCTTACCTACAAGGTCTATGCTGACAAGAGGCTGGACGCACA
AGGCCGCTGTGCCCCATGAAGAGCATCTCCAGCAGCCTCAAGGAGACCATGAACCCGCACGACATCGTG
CAGGACGCCATCCACAACCTTCTCACCTGCCTACCAGCAGTACACGCAGCAGTCCACCCTGGAGCCTGGGC
CCACCTGGCGTGGTGGCGCCACGGCCTCTCCCGCTCCACAGCCTCAGTGGCGCCCGGACAACGAGAA
GACTCTCTGCTCAGCTCTGATGATGAATTC

ACGCGTACGCGGCCGCTCGAG - GFP Tag - GTTTAA



[View online »](#)

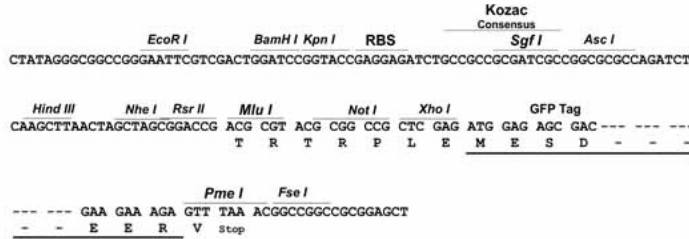
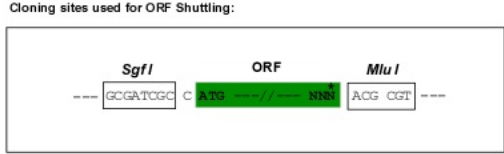
Protein Sequence: >RG201943 representing NM_012264
 Red=Cloning site Green=Tags(s)

MTVRGDV LAPDPASPTTAAASPSVSVIPEGSPTAMEQPVFLMTTAAQAISGFFVWTALLITCHQIYMHLR
 CYSCPNEQR YIVRILFIVPIYAFDSL SLLFFTTNDQYVYVGT VRDCYEALVIYNFLSLCYEYLGGESSI
 MSEIRGKPIESSCMYGTCC LWGKTYSIGFLRFCKQATLQFCVVKPLMAVSTVVLQAFGKYRDGDFDVTSG
 YLYVTIIYNI SVSLALYLFLFYFATRELLSPYSPVLKFFMVKSVIFLSFWQGMLLAILEKCGAIPKIH
 ARVSVGEGTVAAGYQDFIICVEMFFAALALRHAFYKVVYADKRLDAQGRCAPMKSISSSLKETMNP HDIV
 QDAIHNFSPAYQQYTQQSTLEPGPTWRGGAGHLSRSHSLSGARDNEKTL LSSDDEF

TRTRPLE - GFP Tag - V

Restriction Sites: SgfI-MluI

Cloning Scheme:



ACCN: NM_012264

ORF Size: 1221 bp

OTI Disclaimer: The molecular sequence of this clone aligns with the gene accession number as a point of reference only. However, individual transcript sequences of the same gene can differ through naturally occurring variations (e.g. polymorphisms), each with its own valid existence. This clone is substantially in agreement with the reference, but a complete review of all prevailing variants is recommended prior to use. [More info](#)

OTI Annotation: This clone was engineered to express the complete ORF with an expression tag. Expression varies depending on the nature of the gene.

Components: The ORF clone is ion-exchange column purified and shipped in a 2D barcoded Matrix tube containing 10ug of transfection-ready, dried plasmid DNA (reconstitute with 100 ul of water).

Reconstitution Method:

1. Centrifuge at 5,000xg for 5min.
2. Carefully open the tube and add 100ul of sterile water to dissolve the DNA.
3. Close the tube and incubate for 10 minutes at room temperature.
4. Briefly vortex the tube and then do a quick spin (less than 5000xg) to concentrate the liquid at the bottom.
5. Store the suspended plasmid at -20°C. The DNA is stable for at least one year from date of shipping when stored at -20°C.

RefSeq: [NM_012264.5](#)

RefSeq Size: 3587 bp

RefSeq ORF: 1224 bp

Locus ID: 25829

UniProt ID: [Q9Y519](#)

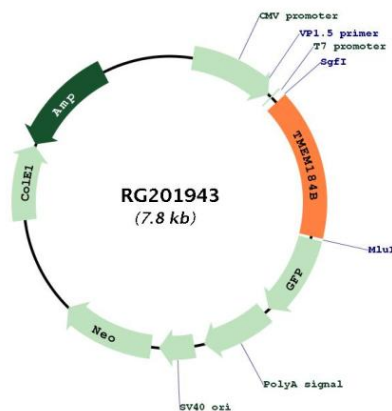
Cytogenetics: 22q13.1

Domains: DUF300

Protein Families: Transmembrane

Gene Summary: May activate the MAP kinase signaling pathway.[UniProtKB/Swiss-Prot Function]

Product images:



Circular map for RG201943