

Product datasheet for **RG201939**

NMU (NM_006681) Human Tagged ORF Clone

Product data:

Product Type: Expression Plasmids
Product Name: NMU (NM_006681) Human Tagged ORF Clone
Tag: TurboGFP
Symbol: NMU
Mammalian Cell Selection: Neomycin
Vector: pCMV6-AC-GFP (PS100010)
E. coli Selection: Ampicillin (100 ug/mL)
ORF Nucleotide Sequence: >RG201939 representing NM_006681
 Red=Cloning site Blue=ORF Green=Tags(s)

TTTTGTAATACGACTCACTATAGGGCGGCCGGGAATTCGTCGACTGGATCCGGTACCGAGGAGATCTGCC
 GCC**CGATCGCC**

ATGCTGCGAACAGAGAGCTGCCGCCAGGTGCGCCGCCGACAGGTGGCCGGCGTCCCCGCTCCTGC
 TGCTGCTGCTGCTGCTCGCCTGGTGC CGCGGCCCTGCCAGGTGCTCCAATATTACCTCAAGGATTACA
 GCCTGAACAACAGCTACAGTTGTGGAATGAGATAGATGATACTTGTTCTGCTTTTCTGTCCATTGATTCT
 CAGCCTCAGGCATCCAATGCACTGGAGGAGCTTTGCTTTATGATTATGGGAATGCTACCAAAGCCTCAGG
 AACAGATGAAAAGATAATACTAAAAGTTCTTATTTTCATTATTCGAAGACACAGAAGTTGGGCAAGTC
 AAATGTTGTGTCGTCAGTTGTGCATCCGTTGCTGCAGCTCGTTCCCTCACCTGCATGAGAGAAGAATGAAG
 AGATTCAGAGTGGACGAAGAATTCCAAAGTCCCTTTGCAAGTCAAAGTCGAGGATATTTTTATTACAGC
 CACGGAATGGAAGAAGTTCAGCAGGTTTCATT

AG**CGACCG**ACGCGTACGCGGCCGCTCGAG - GFP Tag - GTTTAA

Protein Sequence: >RG201939 representing NM_006681
 Red=Cloning site Green=Tags(s)

MLRTESCRPRSPAGQVAAASPLLLLLLLLLLAWCAGACRGAPILPQGLQPEQQLQWNEIDDCSSFLSIDS
 QPQASNALEELCFMIMGMLPKPQEQDEKDNTRFLFHYSKTQKLGKSNVSVVHPLLQLVPHLHERRMK
 RFRVDEEFQSPFASQSRGYFLFRPRNGRRSAGFI

SGP**TRRRLE** - GFP Tag - V

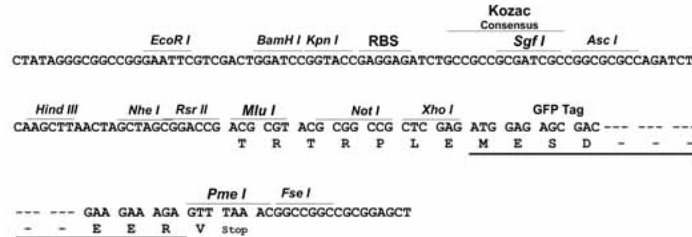
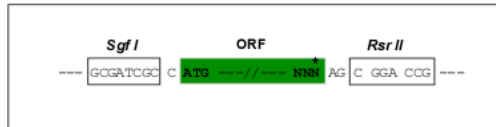
Restriction Sites: Sgfl-RsrII



[View online »](#)

Cloning Scheme:

Cloning sites used for ORF Shuttling:


ACCN: NM_006681

ORF Size: 522 bp

OTI Disclaimer: The molecular sequence of this clone aligns with the gene accession number as a point of reference only. However, individual transcript sequences of the same gene can differ through naturally occurring variations (e.g. polymorphisms), each with its own valid existence. This clone is substantially in agreement with the reference, but a complete review of all prevailing variants is recommended prior to use. [More info](#)
OTI Annotation: This clone was engineered to express the complete ORF with an expression tag. Expression varies depending on the nature of the gene.

Components: The ORF clone is ion-exchange column purified and shipped in a 2D barcoded Matrix tube containing 10ug of transfection-ready, dried plasmid DNA (reconstitute with 100 ul of water).

Reconstitution Method:

1. Centrifuge at 5,000xg for 5min.
2. Carefully open the tube and add 100ul of sterile water to dissolve the DNA.
3. Close the tube and incubate for 10 minutes at room temperature.
4. Briefly vortex the tube and then do a quick spin (less than 5000xg) to concentrate the liquid at the bottom.
5. Store the suspended plasmid at -20°C. The DNA is stable for at least one year from date of shipping when stored at -20°C.

RefSeq: [NM_006681.1](#), [NP_006672.1](#)
RefSeq Size: 817 bp

RefSeq ORF: 525 bp

Locus ID: 10874

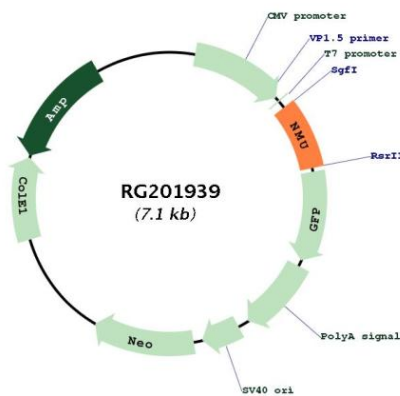
UniProt ID: [P48645](#)

Cytogenetics: 4q12

Protein Families: Druggable Genome, Secreted Protein, Transmembrane

Gene Summary: This gene encodes a member of the neuromedin family of neuropeptides. The encoded protein is a precursor that is proteolytically processed to generate a biologically active neuropeptide that plays a role in pain, stress, immune-mediated inflammatory diseases and feeding regulation. Increased expression of this gene was observed in renal, pancreatic and lung cancers. Alternative splicing results in multiple transcript variants encoding different isoforms. Some of these isoforms may undergo similar processing to generate the mature peptide. [provided by RefSeq, Jul 2015]

Product images:



Circular map for RG201939