

Product datasheet for **RG201917**

ANGPTL2 (NM_012098) Human Tagged ORF Clone

Product data:

Product Type:	Expression Plasmids
Product Name:	ANGPTL2 (NM_012098) Human Tagged ORF Clone
Tag:	TurboGFP
Symbol:	ANGPTL2
Synonyms:	ARP2; HARP
Mammalian Cell Selection:	Neomycin
Vector:	pCMV6-AC-GFP (PS100010)
E. coli Selection:	Ampicillin (100 ug/mL)



[View online »](#)

ORF Nucleotide Sequence:

>RG201917 representing NM_012098
 Red=Cloning site Blue=ORF Green=Tags(s)

TTTTGTAATACGACTCACTATAGGGCGGCCGGGAATTCGTCGACTGGATCCGGTACCGAGGAGATCTGCC
 GCC**CGGATCGCC**

ATGAGGCCACTGTGCGTGACATGCTGGTGGCTCGGACTGCTGGCTGCCATGGGAGCTGTTGCAGGCCAGG
 AGGACGGTTTTGAGGGCACTGAGGAGGGCTCGCCAAGAGAGTTTACCTAAACAGGTACAAGCGGGC
 GGGCGAGTCCCAGGACAAGTGCACCTACACCTTATTGTGCCCCAGCAGCGGGTACCGGGTGCCATCTGC
 GTCAACTCCAAGGAGCCTGAGGTGCTTCTGGAGAACCAGTGCATAAGCAGGAGCTAGAGCTGCTCAACA
 ATGAGCTGCTCAAGCAGAAGCGGCAGATCGAGACGCTGCAGCAGCTGGTGGAGGTGGACGGCGCATTGT
 GAGCGAGTGAAGCTGCTGCGCAAGGAGAGCCGCAACATGAACTCGCGGGTACGCAGCTCTACATGCAG
 CTCCTGCACGAGATCATCCGAAGCGGGACAACCGCTTGGAGCTCTCCAGCTGGAGAACAGGATCTGA
 ACCAGACAGCCGACATGCTGCAGCTGGCCAGCAAGTACAAGGACCTGGAGCACAAGTACCAGCACCTGGC
 CAACTGGCCACAACCAATCAGAGATCATCGCGCAGCTTGGAGGAGCACTGCCAGAGGGTCCCTCGGCC
 AGGCCCGTCCCCAGCCACCCCGCTGCCCGCCCGGGTCTACCAACCACCCACTACAACCGCATCA
 TCAACCAGATCTCTACCAACGAGATCCAGAGTGACCAGAACCTGAAGGTGCTGCCACCCCTCTGCCAC
 TATGCCACTCTCACCAGCTCCCATCTTCCACCAGACAAGCCGTCGGGCCATGGAGAGACTGCCTGCAG
 GCCCTGGAGGATGGCCACGACACCAGCTCCATCTACCTGGTGAAGCCGGAGAACCAACCCGCTCATGC
 AGGTGTGGTGGCACCAGACACGACCCCGGGGCTGGACCGTATCCAGAGACGCTGGATGGCTCTGT
 TAATTCTTCAGAACTGGGAGACGTACAAGCAAGGGTTGGGAACATTGACGGCAATACTGGCTGGGC
 CTGGAGAACATTTACTGGCTGACGAACCAAGGCAACTACAACTCCTGGTACCATGGAGGACTGGTCCG
 GCCGAAAAGTCTTTCAGAATACGCCAGTTTCCGCCTGGAACCTGAGAGCGAGTATTATAAGCTCGGCT
 GGGCGCTACCATGGCAATGCGGGTACTCCTTTACATGGCACAACGGCAAGCAGTTACCACCCTGGAC
 AGAGATCATGATGTCTACACAGGAACTGTGCCACTACCAGAAGGGAGGCTGGTGGTATAACGCCTGTG
 CCCACTCAACCTCAACGGGGTCTGGTACCGGGGGCCATTACCGGAGCCGCTACCAGGACGGAGTCTA
 CTGGGCTGAGTTCGAGGAGGCTTACTCACTCAAGAAAGTGGTATGATGATCCGACCGAACCCCAAC
 ACCTCCAC

AGCGGACCGACGCGTACGCGGCCGCTCGAG – GFP Tag – GTTAA

Protein Sequence:

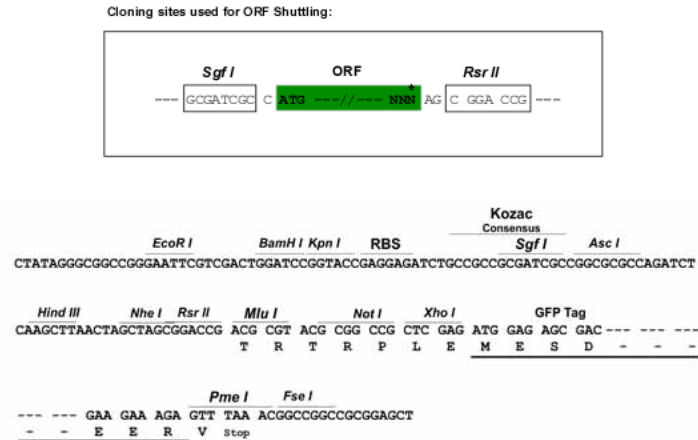
>RG201917 representing NM_012098
 Red=Cloning site Green=Tags(s)

MRPLCVTCWWLGLLAAMGAVAGQEDGFEGTEEGSPREFIYLNRYKRAGESQDKCTYTFIVPQQRVTGAIC
 VNSKEPEVLLLENRVHKQELLELLNELLKQKRQIETLQQLVEVDGGIVSEVKLLRKESRNMNSRVTLQYMQ
 LLHEIIRKRDNALELSQLENRILNQADMLQLASKYKDLEHKYQHLATLAHNQSEIIAQLEEHCQRPVPSA
 RPVPQPPPAAPPRVYQPPTYNRIINQISTNEIQSDQNLKVLPPPLPTMPTLTSLPSSTDKPSGPWRDCLQ
 ALEDGHDTSIIYLVKPNENTRLMQVWCDQRHDPGGWTVIQRRLDGSVNFRRNWETKQGFNIDGEYWL
 LENIYWL TNQGNKLLVTMEDWSGRKVF AEYASFRLEPESEYKLRRLGRYHGNAGDSFTWHNGKQFTTLD
 RDHDVYTGNAHYQKGGWYNACAHSNLNGVWYRGGHYRSRYQDGVYWAEFRGGSYSLKVVMMIRPNPN
 TFH

SGPTRRRLE – GFP Tag – V

Restriction Sites:

Sgfl-RsrII

Cloning Scheme:


ACCN: NM_012098

ORF Size: 1479 bp

OTI Disclaimer: Due to the inherent nature of this plasmid, standard methods to replicate additional amounts of DNA in E. coli are highly likely to result in mutations and/or rearrangements. Therefore, OriGene does not guarantee the capability to replicate this plasmid DNA. Additional amounts of DNA can be purchased from OriGene with batch-specific, full-sequence verification at a reduced cost. Please contact our customer care team at custsupport@origene.com or by calling 301.340.3188 option 3 for pricing and delivery.

The molecular sequence of this clone aligns with the gene accession number as a point of reference only. However, individual transcript sequences of the same gene can differ through naturally occurring variations (e.g. polymorphisms), each with its own valid existence. This clone is substantially in agreement with the reference, but a complete review of all prevailing variants is recommended prior to use. [More info](#)

OTI Annotation: This clone was engineered to express the complete ORF with an expression tag. Expression varies depending on the nature of the gene.

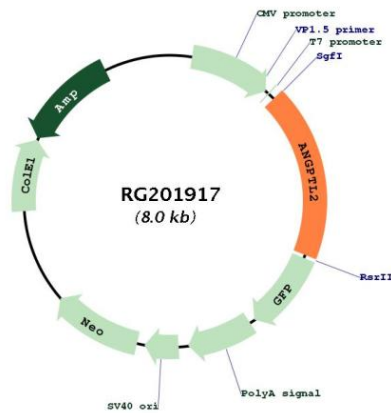
Components: The ORF clone is ion-exchange column purified and shipped in a 2D barcoded Matrix tube containing 10ug of transfection-ready, dried plasmid DNA (reconstitute with 100 ul of water).

- Reconstitution Method:**
1. Centrifuge at 5,000xg for 5min.
 2. Carefully open the tube and add 100ul of sterile water to dissolve the DNA.
 3. Close the tube and incubate for 10 minutes at room temperature.
 4. Briefly vortex the tube and then do a quick spin (less than 5000xg) to concentrate the liquid at the bottom.
 5. Store the suspended plasmid at -20°C. The DNA is stable for at least one year from date of shipping when stored at -20°C.

RefSeq: [NM_012098.3](#)

RefSeq Size: 3572 bp
RefSeq ORF: 1482 bp
Locus ID: 23452
UniProt ID: [Q9UKU9](#)
Cytogenetics: 9q33.3
Domains: FBG
Protein Families: Druggable Genome, ES Cell Differentiation/IPS, Secreted Protein
Gene Summary: Angiopoietins are members of the vascular endothelial growth factor family and the only known growth factors largely specific for vascular endothelium. Angiopoietin-1, angiopoietin-2, and angiopoietin-4 participate in the formation of blood vessels. ANGPTL2 protein is a secreted glycoprotein with homology to the angiopoietins and may exert a function on endothelial cells through autocrine or paracrine action. [provided by RefSeq, Jul 2008]

Product images:



Circular map for RG201917