

Product datasheet for **RG201916**

TRIM29 (NM_012101) Human Tagged ORF Clone

Product data:

Product Type:	Expression Plasmids
Product Name:	TRIM29 (NM_012101) Human Tagged ORF Clone
Tag:	TurboGFP
Symbol:	TRIM29
Synonyms:	ATDC
Mammalian Cell Selection:	Neomycin
Vector:	pCMV6-AC-GFP (PS100010)
E. coli Selection:	Ampicillin (100 ug/mL)



[View online »](#)

ORF Nucleotide Sequence:

>RG201916 representing NM_012101
 Red=Cloning site Blue=ORF Green=Tags(s)

TTTTGTAATACGACTCACTATAGGGCGGCCGGAATTCGTCGACTGGATCCGGTACCGAGGAGATCTGCC
 GCC**CGGATCGCC**

ATGGAAGCTGCAGATGCCTCCAGGAGCAACGGGTCGAGCCAGAAGCCAGGGATGCCCGGAGCCCGTCGG
 GCCCAGTGGCAGCCTGGAGAATGGACCAAGGCTGACGGCAAGGATGCCAAGACCACCAACGGGCACGG
 CGGGGAGGCAGCTGAGGGCAAGAGCCTGGGCAGCGCCCTGAAGCCAGGGGAAGGTAGGAGCGCCCTGTT
 GCGGGCAATGAGTGGCGGCACCCATCATCCAGTTTGTGAGTCCGGGGACGACAAGAATCCAATACT
 TCAGCATGGACTCTATGGAAGGCAAGAGGTCGCCGTACGCAGGGCTCCAGCTGGGGGCTGCCAAGAAGCC
 ACCCGTTACCTTTGCCGAAAAGGGCGAGCTGCGCAAGTCCATTTTCTCGGAGTCCCGGAAGCCACGGTG
 TCCATCATGGAGCCCGGGGAGACCCGGCGAACAGCTACCCCGGGCCGACACGGGCCTTTTTTACGGT
 CCAAGTCCGGCTCCGAGGAGGTGCTGTGCGACTCCTGCATCGGCAACAAGCAGAAGGCGGTCAAGTCTG
 CCTGGTGTCCAGGCCTCCTTCTGCGAGCTGCATCTAAGCCCCACCTGGAGGGCGCCGCTTCCGAGAC
 CACCAGCTGCTCGAGCCATCCGGGACTTTGAGGCCCGCAAGTGTCCCGTGCATGGCAAGACGATGGAGC
 TCTTCTGCCAGACCGACACAGACTGCATCTGTACCTTTGCATGTTCCAGGAGCAAGAATCATAGCAC
 CGTGACAGTGGAGGAGCCAAGGCCGAGAAGGAGACGGAGCTGTCACTGCAAAAGGAGCAGCTGCAGCTC
 AAGATCATTGAGATTGAGGATGAAGCTGAGAAGTGGCAGAAGGAGAAGGACCGCATCAAGAGCTTACCA
 CCAATGAGAAGGCCATCCTGGAGCAGAACTCCGGGACCTGGTGCAGGACCTGGAGAAGCAAAAGGAGGA
 AGTGAGGGCTGCCTGGAGCAGCGGGAGCAGGATGCTGTGGACCAAGTGAAGGTGATCATGGATGCTCTG
 GATGAGAGAGCCAAGGTGCTGCATGAGGACAAGCAGACCCGGGAGCAGCTGCATAGCATCAGCGACTCTG
 TGTGTTTTCTGCAGGAATTTGGTGCATTGATGAGCAATTAATCTCTCCCCCACCCTGCCACCTATCA
 TGTCTGCTGGAGGGGGAGGGCCTGGGACAGTCACTAGGCAACTCAAGGACGACCTGCTCAATGTATGC
 ATGCGCCACGTTGAGAAGATGTGCAAGGCGACCTGAGCCGTAACCTTATTGAGAGGAACACATGGAGA
 ACGGTGGTGACCATCGCTATGTGAACAACACACGAACAGCTTCGGGGGTGAGTGGAGTGCACCGGACAC
 CATGAAGAGATACTCCATGTACCTGACACCCAAAGGTGGGGTCCGGACATCATACCAGCCCTCGTCTCT
 GGCCGCTTACCAAGGAGACCACCCAGAAGAATTTCAACAATCTCTATGGACCAAAAGGTAACACCT
 CCCGGTCTGGGAGTACTCCTCCAGCATTGAGAACTCTGACAATGACCTGCCCGTCTCAAGGCAGCTC
 CTCCTTCTCCCTGAAAGGCTATCCCTCCCTCATGCGGAGCCAAAGCCCCAAGGCCAGCCCAGACTTGG
 AAATCTGGCAAGCAGACTATGCTGTCTACTACCGGCCATTCTAGTCAACAAAGGCAACGGGATGGGT
 CCAACGAAGCCCA

ACGCGTACGCGGCCGCTCGAG - GFP Tag - GTTTAA

Protein Sequence:

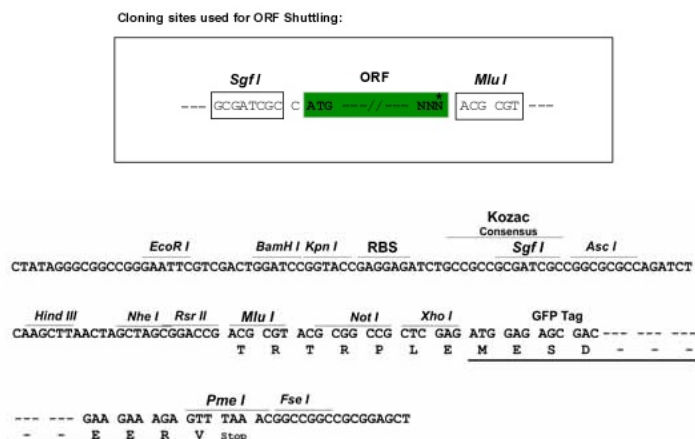
>RG201916 representing NM_012101
 Red=Cloning site Green=Tags(s)

MEAADASRSNGSSPEARDARSPSGPSGLENLTKADGKDAKTTNGHGGEAAEGKSLGSALKPGEGRSALF
 AGNEWRRPIIQFVESGDDKNSNYFSMDSMEGKRSPYAGLQLGAAKKPPVTFAEKGELRKSIFSESARKPTV
 SIMEPGETRRNSYPRADTGLFSRSKSGSEEVLCDSICIGNKQKAVKSLVCQASFCELHLKPHLEGAAFRD
 HQLLEPIRDFEARKCPVHGKTMELFCQTDQTCICYLCMFQEHKNHSTVTVEEAKAEKETELSLQKEQLQL
 KIIIEIEDEAEKWQKEKDRIKSFTTNEKAILEQNFRDLVRDLEKQKEEVRAALEQREQDAVDQVKVIMDAL
 DERAKVLHEDKQTRQLHSISDSVLFLEQFALMSNYSLPPPLPTYHVLLLEGEGLGQSLGNFKDLDLNV
 MRHVEKMCKADLSRNFIERNHMENGGDHRYVNNYTNSTFGGEWSAPDTMKRYSMYLTPKGGVRTSYQPSSP
 GRFTKETQKNFNLYGKGNYSRVWEYSSSIQNSDNDLPVVQGSSSFSLKGYPPLMRSQSPKAQPQTW
 KSGKQTMLSHYRPFYVKNKGIGSNEAP

TRTRPLE - GFP Tag - V

Restriction Sites:

Sgfl-MluI

Cloning Scheme:


ACCN: NM_012101

ORF Size: 1764 bp

OTI Disclaimer: The molecular sequence of this clone aligns with the gene accession number as a point of reference only. However, individual transcript sequences of the same gene can differ through naturally occurring variations (e.g. polymorphisms), each with its own valid existence. This clone is substantially in agreement with the reference, but a complete review of all prevailing variants is recommended prior to use. [More info](#)

OTI Annotation: This clone was engineered to express the complete ORF with an expression tag. Expression varies depending on the nature of the gene.

Components: The ORF clone is ion-exchange column purified and shipped in a 2D barcoded Matrix tube containing 10ug of transfection-ready, dried plasmid DNA (reconstitute with 100 ul of water).

Reconstitution Method:

1. Centrifuge at 5,000xg for 5min.
2. Carefully open the tube and add 100ul of sterile water to dissolve the DNA.
3. Close the tube and incubate for 10 minutes at room temperature.
4. Briefly vortex the tube and then do a quick spin (less than 5000xg) to concentrate the liquid at the bottom.
5. Store the suspended plasmid at -20°C. The DNA is stable for at least one year from date of shipping when stored at -20°C.

RefSeq: [NM_012101.2](#), [NP_036233.2](#)

RefSeq Size: 3037 bp

RefSeq ORF: 1767 bp

Locus ID: 23650

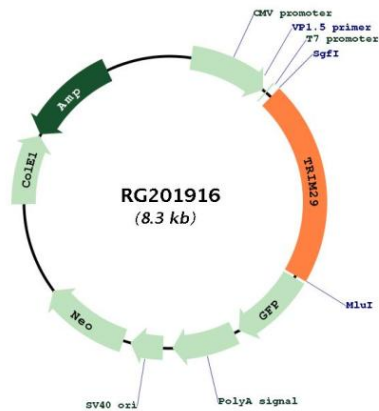
UniProt ID: [Q14134](#)

Cytogenetics: 11q23.3

Protein Families: Transcription Factors

Gene Summary: The protein encoded by this gene belongs to the TRIM protein family. It has multiple zinc finger motifs and a leucine zipper motif. It has been proposed to form homo- or heterodimers which are involved in nucleic acid binding. Thus, it may act as a transcriptional regulatory factor involved in carcinogenesis and/or differentiation. It may also function in the suppression of radiosensitivity since it is associated with ataxia telangiectasia phenotype. [provided by RefSeq, Jul 2008]

Product images:



Circular map for RG201916