

Product datasheet for **RG201899**

Tapasin Related Protein (TAPBPL) (NM_018009) Human Tagged ORF Clone

Product data:

Product Type:	Expression Plasmids
Product Name:	Tapasin Related Protein (TAPBPL) (NM_018009) Human Tagged ORF Clone
Tag:	TurboGFP
Symbol:	Tapasin Related Protein
Synonyms:	TAPBP-R; TAPBPR
Mammalian Cell Selection:	Neomycin
Vector:	pCMV6-AC-GFP (PS100010)
E. coli Selection:	Ampicillin (100 ug/mL)



[View online »](#)

ORF Nucleotide Sequence:

>RG201899 representing NM_018009
 Red=Cloning site Blue=ORF Green=Tags(s)

TTTTGTAATACGACTCACTATAGGGCGGCCGGAATTCGTCGACTGGATCCGGTACCGAGGAGATCTGCC
 GCC**CGCATCGCC**

ATGGGCACACAGGAGGGCTGGTGCCTGCTGCTCTGCCTGGCTCTATCTGGAGCAGCAGAAACCAAGCCCC
 ACCCAGCAGAGGGGCAGTGGCGGCAGTGGACGTGGTCCCTAGACTGTTTCTGGTGAAGGACGGTGC
 CCGTGGAGCTCTCGCCAGCAGTGAAGCAGGGCAAGGGCCTCCCTTGTGCTGAAGCAGGTGCCAGT
 GCTGACGATGGCTCCCTGGAGGACTTACCGATTTCCAAGGGGCACACTGGCCCAAGATGACCCACCTATTA
 TCTTTGAGGCCTCAGTGGACCTGGTCCAGATTCGCCAGGCCGAGGCCTTGTCTCATGCTGACTGCAGTGG
 GAAGGAGGTGACCTGTGAGATCTCCGCTACTTTCTCCAGATGACAGAGACCCTGTTAAGACAGCAGCT
 TGGTTCATGGCCAACGTGCAGGTCTCTGGAGGGGGACCTAGCATCTCCTTGGTATGAAGACTCCCAGGG
 TCGCCAAGAATGAGGTGCTCTGGCACCCAACGCTGAACCTGCCACTGAGCCCCAGGGGACTGTGCGAAC
 TGCAGTGGAGTCCAGGTGATGACACAGACCCAATCCCTGAGCTTCTGTGGGGTCTCAGCCTCCTTG
 GACTGTGGCTTCTCCATGGCACCGGGCTTGGACCTCATCAGTGTGGAGTGGCGACTGCAGACAAGGGCA
 GGGGTCAGTTGGTGTACAGCTGGACCGCAGGGCAGGGCAGGGCTGTGCGGAAGGGCGCTACCTGGAGCC
 TGCACAACCTGGGCATGGCCAGGGATGCCTCCCTCACCTGCCCGGCTCACTATACAGGACGAGGGGACC
 TACATTTGCCAGATCACCACTCTCTGTACCGAGCTCAGCAGATCATCCAGCTCAACATCCAAGTTCCC
 CTAAGTACGACTGAGCTTGGCAAACGAAGCTCTGCTGCCACCCTCATCTGCGACATTGCTGGCTATTA
 CCCTCTGGATGTGGTGGTACGTGGACCCGAGAGGAGCTGGTGGATCCCAGCCCAAGTCTCTGGTGCC
 TCCTTCTCCAGCCTCAGGCAAAGCGTGGCAGGCACCTACAGCATCTCCTCTCTCACCAGACAACCTG
 GCTCTGCAGGTGCCACTTACACCTGCCAGGTACACACATCTCTCTGGAGGAGCCCTTGGGGCCAGC
 CCAGGTTGTCCACAGAGCGGAGAACAGCCTTGGGAGTCACTTTGCCAGCAGTCTCTTCTTCTTGA
 CTGATGTTCTGGGGCTTCAAGACGGCAAGCACCTACAGGACTTGGGCTGCTTCAAGCTGAACGCTGGG
 AGACCACTTCTGTGCTGACACACAGAGCTCCCATCTCCATGAAGACCGCACAGCGGTGAAGCCAGCC
 CAGC

ACGCGTACGCGGCCGCTCGAG - GFP Tag - GTTTAA

Protein Sequence:

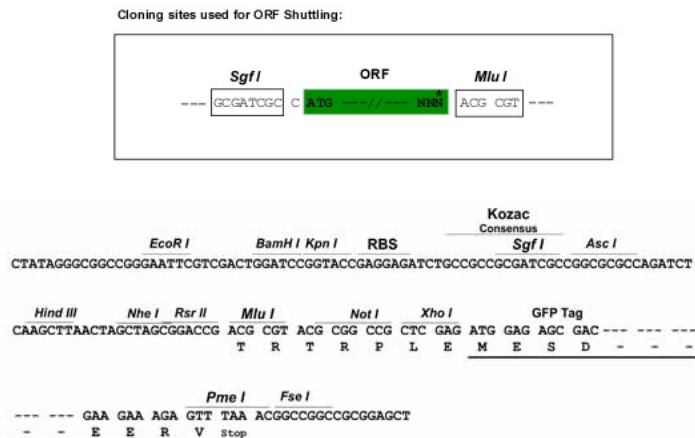
>RG201899 representing NM_018009
 Red=Cloning site Green=Tags(s)

MGTQEGWCLLLCLALSGAAETKPHPAEQWRAVDVVLDCFLVKDGAHRGALASSEDRAASLVLKQVPVL
 DDGSLEDFDFQGGTLAQDDPPIIFEASVDLVQIPQAEALLHADCSGKEVTCEISRYFLQMTETT VKTAA
 WFMANVQVSGGSPSISLVMKTPRVAKNEVLWHPTLNLPLSPQGTVRTAVEFQVMTQTQSLFLLGSSASL
 DCGFSMAPGLDLISVEWRLQHKGRGQLVYSWTAGQGQAVRKGATLEPAQLGMARDASLTLPGLTIQDEGT
 YICQITTSLYRAQQI IQLNIQASPKVRLSLANEALLPTLICDIAGYYP LDVVVTWREELGGSPAQVSGA
 SFSSLRQSVAGTYSISSSLTAEPGSAGATYTCQVTHISLEEPLGASTQVVPPERRTALGVIFASSLFLLA
 LMFLGLQRRQAPTGLGLLQAERWETTSCADTQSSHLHEDRTARVSQPS

TRTRPLE - GFP Tag - V

Restriction Sites:

Sgfl-Mlul

Cloning Scheme:


ACCN: NM_018009

ORF Size: 1404 bp

OTI Disclaimer: The molecular sequence of this clone aligns with the gene accession number as a point of reference only. However, individual transcript sequences of the same gene can differ through naturally occurring variations (e.g. polymorphisms), each with its own valid existence. This clone is substantially in agreement with the reference, but a complete review of all prevailing variants is recommended prior to use. [More info](#)

OTI Annotation: This clone was engineered to express the complete ORF with an expression tag. Expression varies depending on the nature of the gene.

Components: The ORF clone is ion-exchange column purified and shipped in a 2D barcoded Matrix tube containing 10ug of transfection-ready, dried plasmid DNA (reconstitute with 100 ul of water).

Reconstitution Method:

1. Centrifuge at 5,000xg for 5min.
2. Carefully open the tube and add 100ul of sterile water to dissolve the DNA.
3. Close the tube and incubate for 10 minutes at room temperature.
4. Briefly vortex the tube and then do a quick spin (less than 5000xg) to concentrate the liquid at the bottom.
5. Store the suspended plasmid at -20°C. The DNA is stable for at least one year from date of shipping when stored at -20°C.

RefSeq: [NM_018009.3](#), [NP_060479.2](#)

RefSeq Size: 1739 bp

RefSeq ORF: 1407 bp

Locus ID: 55080

UniProt ID: [Q9BX59](#)

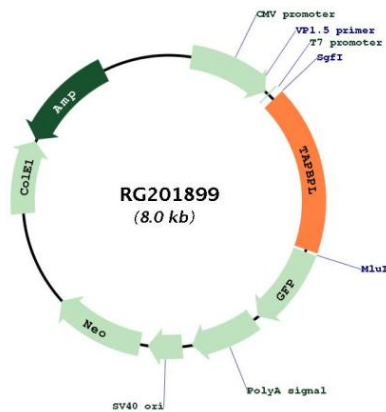
Cytogenetics: 12p13.31

Domains: ig, IGc1, IG

Protein Families: Druggable Genome, Transmembrane

Gene Summary: Tapasin, or TAPBP (MIM 601962), is a member of the variable-constant Ig superfamily that links major histocompatibility complex (MHC) class I molecules to the transporter associated with antigen processing (TAP; see MIM 170260) in the endoplasmic reticulum (ER). The TAPBP gene is located near the MHC complex on chromosome 6p21.3. TAPBPL is a member of the Ig superfamily that is localized on chromosome 12p13.3, a region somewhat paralogous to the MHC.[supplied by OMIM, Mar 2008]

Product images:



Circular map for RG201899