

Product datasheet for **RG201888**

TDP1 (NM_001008744) Human Tagged ORF Clone

Product data:

Product Type:	Expression Plasmids
Product Name:	TDP1 (NM_001008744) Human Tagged ORF Clone
Tag:	TurboGFP
Symbol:	TDP1
Mammalian Cell Selection:	Neomycin
Vector:	pCMV6-AC-GFP (PS100010)
E. coli Selection:	Ampicillin (100 ug/mL)



[View online »](#)

ORF Nucleotide Sequence:

>RG201888 representing NM_001008744
 Red=Cloning site Blue=ORF Green=Tags(s)

TTTTGTAATACGACTCACTATAGGGCGGCCGGAATTCGTCGACTGGATCCGGTACCGAGGAGATCTGCC
 GCC**GCGATCGCC**

ATGTCTCAGGAAGCGATTATGGGAGTGGACCATATCTAGTAGTGATGAAAGTGAGGAAGAAAAGCCAA
 AACAGACAAGCCATCTACCTCTTCTCTCTGTGCCAGGCAAGGAGCAGCAAATGAGCCAGGTACAC
 CTGTTCCGAGGCCAGAAAGCTGCACACAAGAGAAAATACACCTGTGAAATTCAGCAATACAGATTCA
 GTTTTACCTCCAAAAGGCAGAAAAGCGGTTCCAGGAGGACCTCGGCTGGTGTCTGTCCAGCAGTGATG
 ATGAGCTGCAACCAGAAATGCCGAGAAGCAGGCTGAGAAAGTGGTGATCAAAAAGGAGAAAAGACATCTC
 TGCTCCAATGACGGCACTGCCAAAGAAGTAAAATCATGGCGCTCCCGCTGCCACAGGCTCAAAGAG
 GAGGAAGACGAGTATGAGACATCAGGGGAGGGCCAGGACATTTGGGACATGCTGGATAAAGGGAACCCCT
 TCCAGTTTACCTCACTAGAGTCTCTGGAGTTAAGCCAAAGTAACTCTGGAGCCCTCCACATCAAGGA
 TATTTTATCTCCTTTATTTGGGACGCTTGTTCCTCAGCTCAGTTAACTACTGCTTTGAGTGGACTGG
 CTGTA AAAACAGTATCCACCAGAGTT CAGGAAGAAGCCAATCCTGCTTGTGCATGGTGATAAGCGAGAGG
 CTAAGGCTCACCTCCATGCCAGGCCAAGCCTTACGAGAACATCTCTCTGCCAGGCAAAGTTGGATAT
 TGCGTTTGGAAACACACCACGAAAATGATGCTGCTGCTATGAAGAAGGCTCCGGTTGTCATACAC
 ACCTCCAACCTCATCCATGCTGACTGGCACCAGAAAATCAAGGAATATGGTTGAGCCCTTATACCCAC
 GAATTGCTGATGGAACCCACAAATCTGGAGAGTCGCCAACACATTTTAAAGCTGATCTCATCAGTTACTT
 GATGGCTTATAATGCCCTTCTCTCAAGGAGTGGATAGATGTCATTACAAGCACGATCTCTCTGAAACA
 AATGTTTATCTTATTGGTTCAACCCAGGACGCTTCAAGGAAGTCAAAAAGATAATTGGGACATTTTA
 GACTTAAAGAAGCTTCTGAAAGACCATGCCTCATCCATGCCTAACGCAGAGTCTGGCCTGTCGTAGGTCA
 GTTTTCAAGCGTTGGCTCCTTGGGAGCCGATGAATCAAAGTGGTTATGTTCTGAGTTTAAAGAGAGCATG
 CTGACACTGGGAAGGAAAGCAAGACTCCAGGAAAAGCTCTGTTCTCTTTACTTGATCTATCCTTCTG
 TGGAAAATGTGCGGACCAGTTTAGAAGGATATCCTGCTGGGGCTCTCTCCCTATAGCATCCAGACAGC
 TGAAAAACAGAATTGGCTGCATTCTATTTTACAAAATGGTCAGCTGAGACTTCTGGCCGACGAATGCC
 ATGCCACATATTAAGACATATATGAGGCCTTCTCCAGACTTCAGTAAAATTGCTTGGTCCCTTGTCAAA
 GCGCAAATCTGTCCAAGGCTGCCTGGGAGCATTGGAGAAGAATGGCACCCAGCTGATGATCCGCTCCTA
 CGAGCTCGGGTCTTTTCTCCCTT CAGCATTGGTCTAGACAGTTTCAAAGTAAACAGAAGTTCTTC
 GCTGGCAGCCAGGAGCCAATGGCCACCTTCTGTGCCATATGATTTGCCTCCAGAACTGTATGGAAGTA
 AAGATCGCCATGGATATGGAACATTCTTATGTCAAAGCACCGGATACGCATGGGAACATGTGGGTGCC
 CTCC

ACGCGTACGCGGCCGCTCGAG - GFP Tag - GTTTAA

Protein Sequence:

>RG201888 representing NM_001008744
 Red=Cloning site Green=Tags(s)

MSQEGDYGRWTISSSDESEEEKPKDPKSTSSLLCARQGAANEPRYTCSEAQKAAHKRKIISPVKFSNTDS
 VLPPKRQKSGSQEDLGWCLSSSDELQPEMPQKQAEKVVIKKEKDISAPNDGTAQR TENHGAPACHRLKE
 EEDEYETSGEGQDIWDMLDKGNPFQFYLTRVSGVKPKYNSGALHIKDILSPLFGTLVSSAQFNFCFDVDW
 LVKQYPPEFRKKPILLVHGDKREAKAHLHAQAKPYENISLQAKLDIAFGTHHTKMLLLYEEGLRVVIH
 TSNLIHADWHQKTQGIWLSPLYPRIADGTHKSGESPTHFKADLISYLMAYNAPSLKEWIDVIHKHDLSET
 NVYILIGSTPGRFQGSQKDNWGHFRLKLLKDHASSMPNAESWPVVGQFSSVGSGLGADESKWLCSEFKESM
 LTLGKESKTPGKSSVPLYLIIYPSVENVRTSLEGYPAGGSLPYSIQTAEKQNLHLSYFHKWSAETSGRSNA
 MPHIKTYMRPSPDFSKIAWFLVTSANLSKAAWGALEKNGTQLMIRSYELGVLFLPSAFGLDSFKVKQKFF
 AGSQEPMATFPVPYDLPELPELYGSKDRPWIWNIPYVKAPDTHGNMWVPS

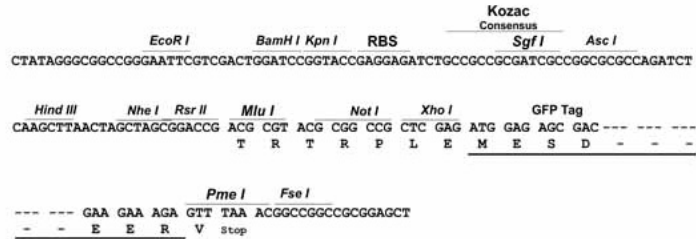
TRTRPLE - GFP Tag - V

Restriction Sites:

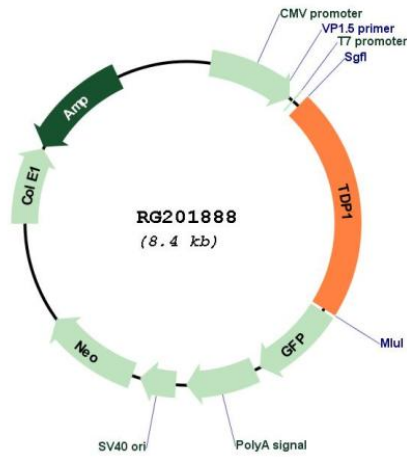
SgfI-MluI

Cloning Scheme:

Cloning sites used for ORF Shutting:



Plasmid Map:



ACCN: NM_001008744

ORF Size: 1824 bp

OTI Disclaimer:	The molecular sequence of this clone aligns with the gene accession number as a point of reference only. However, individual transcript sequences of the same gene can differ through naturally occurring variations (e.g. polymorphisms), each with its own valid existence. This clone is substantially in agreement with the reference, but a complete review of all prevailing variants is recommended prior to use. More info
OTI Annotation:	This clone was engineered to express the complete ORF with an expression tag. Expression varies depending on the nature of the gene.
Components:	The ORF clone is ion-exchange column purified and shipped in a 2D barcoded Matrix tube containing 10ug of transfection-ready, dried plasmid DNA (reconstitute with 100 ul of water).
Reconstitution Method:	<ol style="list-style-type: none">1. Centrifuge at 5,000xg for 5min.2. Carefully open the tube and add 100ul of sterile water to dissolve the DNA.3. Close the tube and incubate for 10 minutes at room temperature.4. Briefly vortex the tube and then do a quick spin (less than 5000xg) to concentrate the liquid at the bottom.5. Store the suspended plasmid at -20°C. The DNA is stable for at least one year from date of shipping when stored at -20°C.
RefSeq:	NM_001008744.2
RefSeq Size:	3540 bp
RefSeq ORF:	1827 bp
Locus ID:	55775
UniProt ID:	Q9NUW8
Cytogenetics:	14q32.11
Protein Families:	Druggable Genome
Gene Summary:	The protein encoded by this gene is involved in repairing stalled topoisomerase I-DNA complexes by catalyzing the hydrolysis of the phosphodiester bond between the tyrosine residue of topoisomerase I and the 3-prime phosphate of DNA. This protein may also remove glycolate from single-stranded DNA containing 3-prime phosphoglycolate, suggesting a role in repair of free-radical mediated DNA double-strand breaks. This gene is a member of the phospholipase D family and contains two PLD phosphodiesterase domains. Mutations in this gene are associated with the disease spinocerebellar ataxia with axonal neuropathy (SCAN1). [provided by RefSeq, Aug 2016]