

Product datasheet for **RG201835**

RSK3 (RPS6KA2) (NM_021135) Human Tagged ORF Clone

Product data:

Product Type:	Expression Plasmids
Product Name:	RSK3 (RPS6KA2) (NM_021135) Human Tagged ORF Clone
Tag:	TurboGFP
Symbol:	RSK3
Synonyms:	HU-2; MAPKAPK1C; p90-RSK3; p90RSK2; pp90RSK3; RSK; RSK3; S6K-alpha; S6K-alpha2
Mammalian Cell Selection:	Neomycin
Vector:	pCMV6-AC-GFP (PS100010)
E. coli Selection:	Ampicillin (100 ug/mL)



[View online »](#)

ORF Nucleotide
Sequence:

>RG201835 representing NM_021135
Red=Cloning site Blue=ORF Green=Tags(s)

TTTTGTAATACGACTCACTATAGGGCGGCCGGAATTCGTCGACTGGATCCGGTACCGAGGAGATCTGCC
GCCGCGATCGCC

ATGGACCTGAGCATGAAGAAGTTCGCCGTGCCAGGTTCTTCTGTGTACCTGCCAGGAAGTCGCGCT
CCAAGAGCTCCAGCCTGAGCCGGCTCGAGGAAGAAGGTGTCGTGAAGGAGATAGACATCAGCCATCATGT
GAAGGAGGGCTTTGAGAAGGCAGATCCTCCAGTTTGAGCTGCTGAAGTTTTAGGACAAGGATCCTAT
GAAAGGTGTTCTGTTGAGGAAGGTGAAGGGTCCGACGCTGGGCAGCTCTACGCCATGAAGTCTTA
AGAAAGCCACCCTAAAAGTTCGGGACCGAGTGAGATCGAAGATGGAGAGAGACATCTGGCAGAAGTAA
TCACCCCTTCATTGTGAAGCTTCATTATGCCTTCAGACGGAAGGAAAGCTCTACCTGATCCTGGACTTC
CTGCGGGGAGGGACCTTCCACCGGCTCCTCAAAGAGGTCATGTTACGGAGGAGGATGTCAAGTTCT
ACCTGGCTGAGCTGGCCTTGGCTTAGACCATCTCCACAGCTGGGGATCATCTACAGAGATCTGAAGCC
TGAGAACATCCTCTGGATGAAGAGGGGCACATTAAGATCACAGATTTGCGCCTGAGTAAGGAGGCCATT
GACCACGACAAGAGAGCGTACTCCTTCTGCGGGAGCATCGAGTACATGGCGCCGAGGTGGTGAACCGGC
GAGGACACACGCAGAGTGCCGACTGGTGGTCTTCGCGCTGCTCATGTTGAGATGCTCACGGGGTCCCT
GCCGTTCCAGGGGAAGGACAGGAAGGAGACCATGGCTCTCATCCTCAAAGCCAAGCTGGGGATGCCGAG
TTCCTCAGTGGGAGGCACAGAGTTTGTGCGAGCTCTTCAAACGGAACCCCTGCAACCGGCTGGGTG
CTGGCATTGACGGAGTGGAGGAAATTAAGCGCCATCCCTTCTTTGTGACCATAGACTGGAACACGCTGTA
CCGGAAGGAGATCAAGCCACCGTTCAAACAGCAGTGGCAGGCCCTGAGGACACCTTCCACTTTGACCC
GAGTTCACAGCGCGGACGCCACAGACTCTCTGGCGTCCCCCGAGTGCAAACGCTCATCACCTGTTTA
GAGGATTCAGCTTTGTGGCTCAAGCCTGATCCAGGAGCCCTCACAGCAAGATCTGCACAAGTCCAGT
TACCCAATCGTGCAGCAGTTACACGGGAACAACATCCACTTCACCGATGGCTACGAGATCAAGGAGGAC
ATCGGGGTGGGCTCCTACTCAGTGTGCAAGCGATGTGTGCATAAAGCCACAGACACCGAGTATGCCGTGA
AGATCATTGATAAGAGCAAGAGAGACCCCTCGGAAGAGATTGAGATCCTCCTGCGGTACGGCCAGCACCC
GAACATCATCACCTCAAGGATGTCTATGATGATGGCAAGTTTGTGTACCTGGTAAATGGAGCTGATGCGT
GGTGGGGAGCTCCTGGACCGCATCCTCCGGCAGAGATACTTCTCGGAGCGCGAAGCCAGTACGCTCCTGT
GCACCATACCAAGACCATGGACTACCTCCATTCCAGGGGTTGTTTCATCGAGACCTGAAGCCGAGTAA
CATCCTGTACAGGATGAGTCGGGAGCCAGAATCCATCCGAGTCTGCGACTTCGGCTTTGCCAAGCAG
CTGCGCGCGGGGAACGGGCTGCTCATGACACCCTGCTACACGGCCAATTCGTGGCCCCGGAGGTCTCTGA
AGCGTCAAGGCTATGATGCGGCGTGTGACATCTGGAGTTTGGGGATCCTGTTGTACACCATGCTGGCAGG
ATTTACCCCTTTTGCAAATGGGCCAGACGATACCCCTGAGGAGATTCTGGCGCGGATCGGCAGTGGGAAG
TATGCCCTTTCTGGGGAAACTGGGACTCGATATCTGACGCGAGCTAAAGACGTCGTGTTCAAGATGCTCC
ACGTGGACCTCATCAGCGCCTGACGGCGATGCAAGTGTCAAACACCCGTGGGTGGTCAACAGAGAGTA
CCTGTCCCAAACAGCTCAGCCGACAGGACGTGCACCTGGTGAAGGGCGCGATGGCCGCCACTACTTT
GCTCTAAACAGAACCTCAGGCCCGCGGCTGGAGCCCGTGTGTCGTCCAACCTGGCTCAGCGCAGAG
GCATGAAGAGACTCAGTCCACGCGGTTG

AGCGGACCGACGCGTACGCGGCCGCTCGAG - GFP Tag - GTTTAA

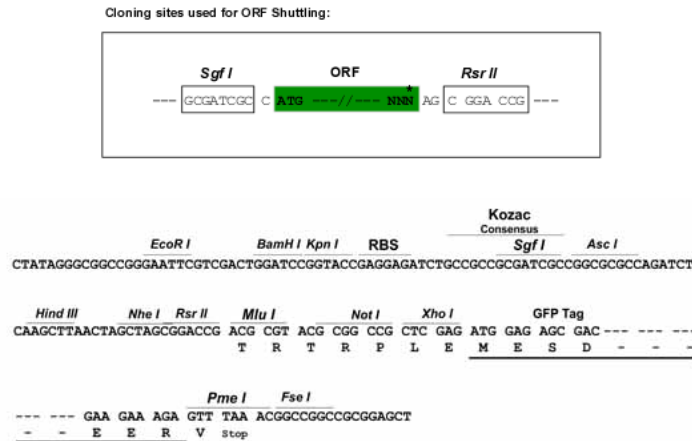
Protein Sequence: >RG201835 representing NM_021135
 Red=Cloning site Green=Tags(s)

```
MDLSMKKFAVRRFFSVYLRKRSRKSSSLRLEEEGVVKEIDISHHVKEGF EKADPSQFELLKVLGQGSY
GKVFLVRKVKGS DAGQLYAMKVLKATLKVDRVRSKMERDILAEVNHPFIVKLYHAFQTEGKLYLILDF
LRGGDLFTRL SKEVMFTEEDVKFYLAELALALDHLHSLGIYRDLKPENILLDEEGHIKITDFGLSKEAI
DHDKRAYSFCGTIEYMAPEVNNRRGHTQSADWWSFGVLMFEMLTGSLPFQGKDRKETMALILKAKLGMPQ
FLSGEAQSLLRALFKRNPCNRLGAGIDGVVEIKRHPFFVTIDWNTLYRKEIKPPFKPAVGRPEDTFHFDP
EFTARTPTDSPGVPPSANAHHLFRGFSFVASSLIQEPSQQLHKVPVHPIVQQLHGNNIHFDTGYEIKED
IGVGSYSVCKRVCVKATDTEYAVKIIDKSKRDPSEEIEILLRYGQHPNIIITLKDYDDGKFVYLMELMR
GGELLDRI LRQRYFSEREASDVLCITKTMDYLHSQGVVHRDLKPSNILYRDESGSPESIRVCDFFGFAKQ
LRAGNGLLMTPCYTANFVAPEVLKRQGYDAACDIWSLGILLYTMLAGFTPFANGPDDTPEEILARIGSGK
YALSGGNWDSISDAAKDVSKMLHVDPHQRLTAMQVLKHPVWVNNREYLSPNQLSRQDVHLVKGAMAATYF
ALNRTQPAPRLEPVLSSNLAQRRGMKRLTSTRL
```

SGPTRRRLE - GFP Tag - V

Restriction Sites: SgfI-RsrII

Cloning Scheme:



ACCN: NM_021135

ORF Size: 2199 bp

OTI Disclaimer: The molecular sequence of this clone aligns with the gene accession number as a point of reference only. However, individual transcript sequences of the same gene can differ through naturally occurring variations (e.g. polymorphisms), each with its own valid existence. This clone is substantially in agreement with the reference, but a complete review of all prevailing variants is recommended prior to use. [More info](#)

OTI Annotation: This clone was engineered to express the complete ORF with an expression tag. Expression varies depending on the nature of the gene.

Components: The ORF clone is ion-exchange column purified and shipped in a 2D barcoded Matrix tube containing 10ug of transfection-ready, dried plasmid DNA (reconstitute with 100 ul of water).

Reconstitution Method:

1. Centrifuge at 5,000xg for 5min.
2. Carefully open the tube and add 100ul of sterile water to dissolve the DNA.
3. Close the tube and incubate for 10 minutes at room temperature.
4. Briefly vortex the tube and then do a quick spin (less than 5000xg) to concentrate the liquid at the bottom.
5. Store the suspended plasmid at -20°C. The DNA is stable for at least one year from date of shipping when stored at -20°C.

RefSeq: [NM_021135.3](#)

RefSeq Size: 5817 bp

RefSeq ORF: 2202 bp

Locus ID: 6196

UniProt ID: [Q15349](#)

Cytogenetics: 6q27

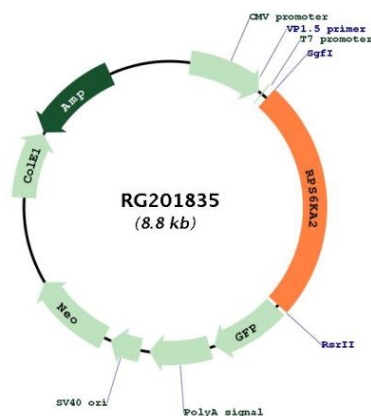
Domains: pkinase, S_TK_X, TyrKc, PDZ, S_TKc

Protein Families: Druggable Genome, Protein Kinase

Protein Pathways: Long-term potentiation, MAPK signaling pathway, mTOR signaling pathway, Neurotrophin signaling pathway, Oocyte meiosis, Progesterone-mediated oocyte maturation

Gene Summary: This gene encodes a member of the RSK (ribosomal S6 kinase) family of serine/threonine kinases. This kinase contains two non-identical kinase catalytic domains and phosphorylates various substrates, including members of the mitogen-activated kinase (MAPK) signalling pathway. The activity of this protein has been implicated in controlling cell growth and differentiation. Alternative splice variants, encoding different isoforms, have been characterized. [provided by RefSeq, Jan 2016]

Product images:



Circular map for RG201835