

## Product datasheet for **RG201812**

### **UBOX5 (NM\_014948) Human Tagged ORF Clone**

#### **Product data:**

Product Type:	Expression Plasmids
Product Name:	UBOX5 (NM_014948) Human Tagged ORF Clone
Tag:	TurboGFP
Symbol:	UBOX5
Synonyms:	hUIP5; RNF37; UBCE7IP5; UIP5
Mammalian Cell Selection:	Neomycin
Vector:	pCMV6-AC-GFP (PS100010)
E. coli Selection:	Ampicillin (100 ug/mL)



[View online »](#)

**ORF Nucleotide Sequence:**

>RG201812 representing NM\_014948  
 Red=Cloning site Blue=ORF Green=Tags(s)

TTTTGTAATACGACTCACTATAGGGCGGCCGGAATTCGTCGACTGGATCCGGTACCGAGGAGATCTGCC  
 GCC**CGCATCGCC**

ATGGTAATAAATCTTTGCCTCCACAGTTCAGACCAAGAATTCACTGCAACAAGATATCAGCTGATGGTT  
 ACGAAGTAGAAAATCTCATCTCTGAAGATCTCACAAGAGAAGTCATGGTTTCAGGACAGAGTATTCAT  
 TAAGCCACCAGTCTATGTGACAGTTTCATTTCCCTTTAATGTGGAAATCTGTAGGATCAACATAGACCTC  
 ACAGCTGGGGGAGGTGAGAACGTCAGTGGCCTGGAAATGTACACATCTGCCTCATCTAGCAGAGTGTCTT  
 GGAATACGCCAGTCCCGGACCCTGGGCCAGCTGAGCCATCTGTCCAGACAAGGAGGCGTTCACCTT  
 GGTAGGCAAAAGTCTTACTGAAAAACCAGAGCCAAGTGGTGTAGCCACAGGGGCTTCAAGGCCAGGCC  
 CCTTTTGGCGGATGGAAGCCACTCCCTCCCTGCTGTTGTGGCCAGGAGCTCTGGAATAAAGGGG  
 CTCTTTCCCTTAGCCACGTGGCCACTTAAGGATCTGTATCACCCATGTGACAGGCGCGGTATCCCTTG  
 TATCAAGCGGTTGGAAGTGTGGGTGAGCCGCAAGACCTGCTCCAGGAAGTGATAGACAGCATCCTG  
 CTGGTCACCTCAGAGAACCTGCCTCAGGATGTGGCTCTGCAGGCTCCAGCCTTGCCCATGGAAGTGACT  
 GTGACCCTGGGGACCAGCCTGAGAGCCAGCAGGCTCCCTCCAGCCTGCAGAAGCTGGCCGAGATCATTCA  
 GGATGTGCTGAGGAGTTCCTGGATCCCATCACCTGGAGATCATGCCTGTCCCATGCTGCTGCCCTCA  
 GGCAAGGTCATCGACCAGAGCAGTGGAGAAGTGAACCGCAGTGAAGCCACATGGGGCCGAGTGCCCA  
 GTGACCCTTTCACGGGGTAGCTTTTACTCCGCACTCTCAGCCCTGCCTCACCCCTCCCTCAAGGCCCG  
 GATTGACCATTTCTGCTCCAGCACTCCATCCCTGGCTGCCACCTGCTTGGGAGAGCACAGACGGCATTG  
 GCAGTATCCCTTCTCCATTGTTCTGCCCTCTCAGAAAAGGAAGATAGAGCAGGCTGAACATGTCCCAG  
 ACAGTAACCTTTGGTGAATGCTTCTCTGTTTTTCTGCCACAAGCCCTTTGGTCTTACCCACTACCTCAGA  
 GCACACTGCTAAGAAAATGAAAGCCACCAATGAGCCAGCCTGACACATATGGACTGCTCGACAGGTCCA  
 CTGTCCCACGAGCAGAAGCTGTCAAAAGCTTGGAAATTGCCTTGGCATCCACCCTTGGCTCATGCCCT  
 CCTTACGGCACGGCTGACCAGGGGACAGCTCCAGCACCTTGGCACAAGAGGGAGCAACACTTCTGGAG  
 GCCTGGCACCGGCTCGGAGCAGCCTGGGAGCATCTGGGCCCGAATGTGCCTCTGCAAAAAGATATTT  
 TCTCCCTACTTCAAAAAGGAGCCGGTGTACCAGCTGCCCTGCGGCCACCTCCTGTGCCGACCCTGCCTGG  
 GTGAGAAGCAACGCTCCCTGCCATGACGTGCACAGCCTGCCAGCGGCCGTTGCTAGCCAAGACGTGCT  
 GCGGGTCCACTTC

**ACGCGTACGCGGCCGCTCGAG** – GFP Tag – GTTTAA

**Protein Sequence:**

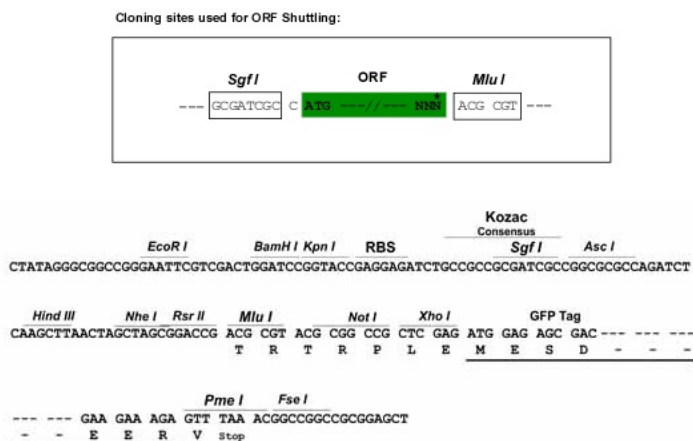
>RG201812 representing NM\_014948  
 Red=Cloning site Green=Tags(s)

MVINLCLPQFRPRIHCNKISADGYEVENLISEDLTKRSHGFRTEYFIKPPVYVTVSFPFVVEICRINIDL  
 TAGGGQNVGTGLEMYTSASSSRVSWNTPQCRTLGPAPSPVDPKEAFTLVGKVLKQSQVVFVSHRFGKARP  
 PFGAMEATLPSPAVVAQELWNKGALSLSHVAHLRICHIVTGGGIPCIKRELVWGQPAKTCSEQVIDSIL  
 LVTSENLPQDVALQAPALPMESDCDPGDQPESSQAPSSQKLAIEIQDVPEEFLDPITLIMPCLLPS  
 GKVIDQSTLEKCNRESEATWGRVSDPFTGVAFTPHSQPLPHPSLKARIDHFLQHSIPGCHLLGRAQTAL  
 AVIPSSIVLPSQKRKIEQAEHVPDSNFGVNASCFSATSPLVLPPTSEHTAKMKATNEPSLTHMDCSTGP  
 LSHEQKLSQSLEIALASTLGSMPSTARLTRGQLQHLGTRGSNTSWRPGTGSEQPGSILGPECASCKRVF  
 SPYFKKEPVYQLPCGHLLCRPCLGKQRSLPMTCTACQRPVAVASQDVLRVHF

**TRTRPLE** – GFP Tag – V

**Restriction Sites:**

Sgfl-MluI

**Cloning Scheme:**


**ACCN:** NM\_014948

**ORF Size:** 1623 bp

**OTI Disclaimer:** The molecular sequence of this clone aligns with the gene accession number as a point of reference only. However, individual transcript sequences of the same gene can differ through naturally occurring variations (e.g. polymorphisms), each with its own valid existence. This clone is substantially in agreement with the reference, but a complete review of all prevailing variants is recommended prior to use. [More info](#)

**OTI Annotation:** This clone was engineered to express the complete ORF with an expression tag. Expression varies depending on the nature of the gene.

**Components:** The ORF clone is ion-exchange column purified and shipped in a 2D barcoded Matrix tube containing 10ug of transfection-ready, dried plasmid DNA (reconstitute with 100 ul of water).

**Reconstitution Method:**

1. Centrifuge at 5,000xg for 5min.
2. Carefully open the tube and add 100ul of sterile water to dissolve the DNA.
3. Close the tube and incubate for 10 minutes at room temperature.
4. Briefly vortex the tube and then do a quick spin (less than 5000xg) to concentrate the liquid at the bottom.
5. Store the suspended plasmid at -20°C. The DNA is stable for at least one year from date of shipping when stored at -20°C.

**RefSeq:** [NM\\_014948.4](#)

**RefSeq Size:** 4346 bp

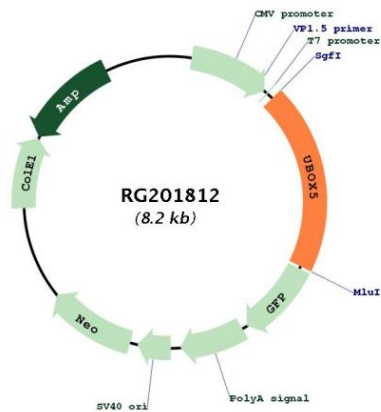
**RefSeq ORF:** 1626 bp

**Locus ID:** 22888

**UniProt ID:** [O94941](#)

**Cytogenetics:** 20p13  
**Domains:** U-box  
**Protein Families:** Druggable Genome  
**Protein Pathways:** Ubiquitin mediated proteolysis  
**Gene Summary:** This gene encodes a U-box domain containing protein. The encoded protein interacts with E2 enzymes and may play a role in the ubiquitination pathway. Alternate splicing results in multiple transcript variants. [provided by RefSeq, Jun 2012]

**Product images:**



Circular map for RG201812