

Product datasheet for **RG201802**

Coronin 3 (CORO1C) (NM_014325) Human Tagged ORF Clone

Product data:

Product Type:	Expression Plasmids
Product Name:	Coronin 3 (CORO1C) (NM_014325) Human Tagged ORF Clone
Tag:	TurboGFP
Symbol:	Coronin 3
Synonyms:	HCRNN4
Mammalian Cell Selection:	Neomycin
Vector:	pCMV6-AC-GFP (PS100010)
E. coli Selection:	Ampicillin (100 ug/mL)



[View online »](#)

ORF Nucleotide Sequence:

>RG201802 representing NM_014325
 Red=Cloning site Blue=ORF Green=Tags(s)

TTTTGTAATACGACTCACTATAGGGCGGCCGGAATTCGTCGACTGGATCCGGTACCGAGGAGATCTGCC
 GCCGCGATCGCC

ATGAGCGGAGTGGTACGACAGAGCAAGTTTCGGCATGTATTTGGCAAGCGGTGAAAAATGACCAGTGT
 ATGATGACATCCGGGTTTCTCGTGTGACCTGGGATAGTTCTTTTGTGCTGTCAATCCCAGATTTGTTGC
 CATAATCATAGAGGCAAGTGGGGAGGAGCGTTCTTGTCTCCCTCTGCACAAGACTGGTCTGAATTGAC
 AAATCTTACCCTACAGTATGTGGCCACACAGGACCAGTGTGGACATAGACTGGTCCCACATAACGATC
 AGGTCATTGCCAGCGTTTCCAGAGGACTGCACGGTCATGGTATGGCAGATCCCAGAAAAATGGACTCACCT
 TTCCCTGACTGAACCTGTGGTATTTTGGAAAGGCCACTCAAAGAGAGTCCGCATCGTGGCTTGGCATCCA
 ACGGCCCGCAATGTGCTTCTTAGTGCAGGCTGTGATAATGCCATTATCATCTGGAATGTGGGAACAGGGG
 AAGCCCTTATAAACTTGGACGATATGCATTAGACATGATTTACAATGTGAGCTGGAACCGGAATGGCAG
 TCTGATCTGCACAGCTTCCAAGACAAGAAAGTGAAGTCAATTGATCCCAGGAAACAAGAGATTGTTGCT
 GAGAAGGAGAAAGCACATGAAGGAGCAAGACCCATGAGAGCCATCTTCTGGCCGATGGCAATGTCTTCA
 CCACTGGGTTTCCAGCCGATGAGCGAGCGGAGCTGGCTCTCTGGAATCCGAAAAATATGCAGGAACCAAT
 TGCTCTTCATGAGATGGACACTAGCAATGGGGTGTGCTGCCTTTCTATGACCCTGACACCAGCATCATT
 TACTTATGTGGAAAGGGTACAGCAGTATTCGCTATTTTGGATCACGGATGAATCCCCGTACGTCCTACT
 ACCTCAACACATTCAGCAGCAAGGAGCCTCAGAGAGGGATGGGTTACATGCCAAGAGGGGACTTGTATGT
 TAACAAATGTGAGATTGCCAGATTTCTCAAACCTCATGAGAGAAAGTGTGAACCTATTATTAGACTGTT
 CCCAGGAAGTCTGACCTTTTCCAAGATGACCTGTATCTGACACAGCGGGCCAGAGGCCCGCTGGAGG
 CAGAAGAGTGGTTCGAAGGCAAGATGCAGACCCCAATCCTCATCTCTTGAAGCACGGGTACATTCAGG
 CAAAAACAGGGATCTCAAGGTGGTCAAGAAGAACATTCTGGATAGCAAGCCCACTGCAAAACAAGAAGTGC
 GACCTGATCAGCATCCCCAAGAAAACCACAGACACGGCCAGTGTGCAAAATGAAGCCAAGTTGGATGAGA
 TTTTAAAAGAGATCAAATCTATAAAAAGACACAATCTGCAATCAAGATGAGCGTATTTCCAAGTTAGAACA
 GCAGATGGCAAAGATAGCAGCC

ACGCGTACGCGGCCGCTCGAG - GFP Tag - GTTTAA

Protein Sequence:

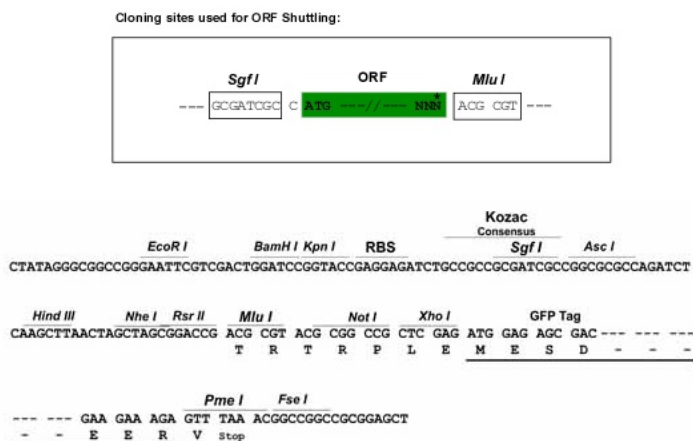
>RG201802 representing NM_014325
 Red=Cloning site Green=Tags(s)

MRRVVRQSKFRHVFQAVKNDQCYDDIRVSRVTWSSFCVAVNPRFVAIIIEASGGGAFLVPLHKTGRID
 KSYPTVCGHTGPVLDIDWCPHNDQVIASGSEDCTVMVWQIPENGLTSLTEPVVILEGHSKRVGIVAWHP
 TARNVLLSAGCDNAIIWNVGTGEALINLDDMHSDMIYNVSWNRNGSLICTASKDKKVRVIDPRKQEIWA
 EKEKAHEGARPMRAIFLADGNVFTTGFSRMSERQLALWNPKNMQEPIALHEMDSNGVLLPFYDPDTSII
 YLCGKGDSSIRYFEITDESPYVHYLNTFSSKEPQRGMGYMPKRGLDVNKCEIARFFKLHERKCEPIIMTV
 PRKSDLFQDDLYPDAGPEAALEAEWFEGKNADPILISLKHGYIPGKNRDLKVVKKNILDSKPTANKKC
 DLISIPKKTDTASVQNEAKLDEILKEIKSIKDTICNQDERISKLEQQMAKIAA

TRTRPLE - GFP Tag - V

Restriction Sites:

Sgfl-MluI

Cloning Scheme:


ACCN: NM_014325

ORF Size: 1422 bp

OTI Disclaimer: The molecular sequence of this clone aligns with the gene accession number as a point of reference only. However, individual transcript sequences of the same gene can differ through naturally occurring variations (e.g. polymorphisms), each with its own valid existence. This clone is substantially in agreement with the reference, but a complete review of all prevailing variants is recommended prior to use. [More info](#)

OTI Annotation: This clone was engineered to express the complete ORF with an expression tag. Expression varies depending on the nature of the gene.

Components: The ORF clone is ion-exchange column purified and shipped in a 2D barcoded Matrix tube containing 10ug of transfection-ready, dried plasmid DNA (reconstitute with 100 ul of water).

Reconstitution Method:

1. Centrifuge at 5,000xg for 5min.
2. Carefully open the tube and add 100ul of sterile water to dissolve the DNA.
3. Close the tube and incubate for 10 minutes at room temperature.
4. Briefly vortex the tube and then do a quick spin (less than 5000xg) to concentrate the liquid at the bottom.
5. Store the suspended plasmid at -20°C. The DNA is stable for at least one year from date of shipping when stored at -20°C.

RefSeq: [NM_014325.4](#)

RefSeq Size: 3828 bp

RefSeq ORF: 1425 bp

Locus ID: 23603

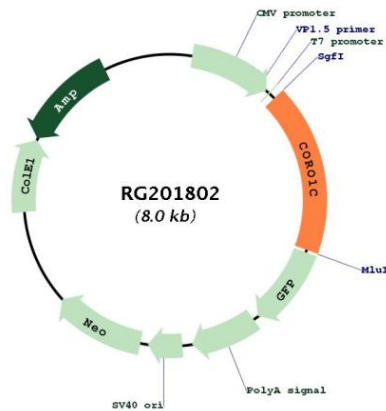
UniProt ID: [Q9ULV4](#)

Cytogenetics: 12q24.11

Domains: WD40

Gene Summary: This gene encodes a member of the WD repeat protein family. WD repeats are minimally conserved regions of approximately 40 amino acids typically bracketed by gly-his and trp-asp (GH-WD), which may facilitate formation of heterotrimeric or multiprotein complexes. Members of this family are involved in a variety of cellular processes, including cell cycle progression, signal transduction, apoptosis, and gene regulation. Three transcript variants encoding two different isoforms have been found for this gene. [provided by RefSeq, Feb 2013]

Product images:



Circular map for RG201802