

Product datasheet for **RG201789**

COPB2 (NM_004766) Human Tagged ORF Clone

Product data:

Product Type:	Expression Plasmids
Product Name:	COPB2 (NM_004766) Human Tagged ORF Clone
Tag:	TurboGFP
Symbol:	COPB2
Synonyms:	beta'-COP; MCPH19
Mammalian Cell Selection:	Neomycin
Vector:	pCMV6-AC-GFP (PS100010)
E. coli Selection:	Ampicillin (100 ug/mL)



[View online »](#)

ORF Nucleotide Sequence:

>RG201789 representing NM_004766
 Red=Cloning site Blue=ORF Green=Tags(s)

TTTTGTAATACGACTCACTATAGGGCGGCCGGAATTCGTCGACTGGATCCGGTACCGAGGAGATCTGCC
 GCC**CGCATCGCC**

ATGCCTCTGCGACTTGATATCAAAAAGAAAGCTAACTGCTAGATCTGATCGAGTTAAGAGTGTGGATCTGC
 ATCCTACAGAGCCATGGATGTTGGCAAGTCTTTACAATGGCAGTGTGTGTTTGGAAATCATGAAACACA
 GACACTGGTGAAGACATTTGAAGTATGTGATCTTCTGTTTCGAGCTGCAAAGTTTGTGCAAGGAAGAAT
 TGGGTTGTGACAGGAGCGGATGACATGCAGATTAGAGTGTTCATTACAATACTCTGGAGAGAGTTCATA
 TGTTTGAAGCACACTCAGACTACATTGCTGTATTGCTGTTTATCCAACCCAGCCTTTTATTCTAACTAG
 CAGTGATGACATGCTTATTAAGCTCTGGGACTGGGATAAAAAATGGTCTTGCTCACAAGTGTGTAAGGA
 CACACCCATTATGTTATGCAGATTGTGATCAACCCCAAAGATAACAATCAGTTTGCCAGTGCCTCTTTGG
 ACAGGACTATCAAGGTGTGGCAGTTGGGCTCTTCGTACCAAACCTTCACTTTGGAAGGACATGAGAAAGG
 CGTGAATTGCATTGATTACTACAGTGGTGGGACAAGCCATACCTCATTTAGGTGCAGATGACCGTCTT
 GTAAAAATATGGGATTATCAGAATAAAACATGTGTGCAGACACTGGAAGGACATGCCAAAAATGTGCTT
 GTGCCAGCTTTCATCCTGAGTTGCCAATCATTATCACAGGTTTCAAGAGTGAACAGTACGTATTTGGCA
 TTCAAGCACCTACCGCTTGAGAGCACACTGAATTATGGAATGGAGAGGGTATGGTGCCTGGCCAGTCTA
 AGAGGGTCAAACAATGTCGCTTTGGGCTATGATGAAGGGAGCATCATTGTTAAGCTTGGTCCGGGAGGAAC
 CTGCCATGTCCATGGATGCCAATGGAAGATAATTTGGGCCAAGCATTGAGAAGTCCAGCAGGCCAACCT
 AAAAGCAATGGGAGATGCTGAAATTAAGATGGTGAAGATTGCCACTGGCAGTAAAGGATATGGGCAGT
 TGTGAAATATACCCTCAGACTATTCAGCACAATCCTAATGGGCGGTTTGGTGGTGTGTGGTGTGGGG
 AGTATATCATCTACACAGCAATGGCATTGAGAAACAAGAGCTTTGGATCTGCTCAGGAGTTGCATGGGG
 CCACGATTCCTCAGAGTATGCAATAAGAGAGAGCAACAGCATTGTAAGATATTTAAGAACCTTAAGGAA
 AAAAAATCATTTAAACCAGATTTTGGAGCAGAAAGTATCTACGGCGGCTTCTTATTGGGAGTCAGATCTG
 TAAATGGCTTAGCCTTCTATGACTGGGACAATACAGAACTCATACGAAGAATTGAAATTCAGCCAAACA
 TATTTTCTGGTCTGACTCTGGAGAGCTAGTCTGTATTGCTACTGAGGAATCATTTTTTATCCTTAAGTAT
 CTGTCAGAAAAAGTCTTGGCTGCACAGGAAACACATGAGGGAGTACTGAAGATGGCATTGAAGATGCCCT
 TTGAGGTTCTTGGTGAGATTGAGAAATGTGAAAACAGGGCTTTGGGTAGGCGATTGCTTCATTTACAC
 AAGTTCGTGAACAGATTAATTTATTATGTTGGAGGAGAATAGTCACCATTGCCCACTTGACAGGACG
 ATGTATCTCCTAGGCTACATTCCTAAAGACAACAGGCTTTATCTGGGGGATAAAGAATTGAACATCATT
 GCTATTCCTGCTGGTTTCAGTCTGGAATACCAGACAGCTGTCATGCGGAGGGACTTTAGCATGGCTGA
 TAAGGTCCTTCTACCATTCAAAGAACAGAGGACCAGAGTTGCACACTTTTTGGAAAAGCAGGGCTTC
 AAGCAGCAAGCTCTTACAGTATCCACAGATCCTGAGCATCGTTTTGAGCTTGCTCTTCAGCTTGGAGAGT
 TAAAAATTGCATACCAGTTAGCAGTGGAAAGCAGAGTCAGAACAGAAGTGGAAACAACCTTGCTGAACCTGC
 CATTAGTAAATGTCAGTTTGGCTAGCCAGGAGTGCCTGCATCATGCACAGGATTATGGGGCCTGCTG
 CTTTTGGCCACTGCCTCTGGAATGCTAATATGGTGAACAAGCTAGCAGAGGGTCCGGAGAGAGATGGCA
 AAAATAATGTGGCATTGATGAGCTACTTTTACAGGGCAAGGTTGATGCCTGCCTAGAGCTCTTAATTAG
 AACTGGACGGCTGCCAGAAGCTGCCTTCTTGGCCGAACTTACTTACCCAGTCAGGTTTCAAGGTTAGTG
 AAATCTGGAGAGAGAATCTCTCAAAGTCAATCAGAAAGCAGCAGAATCCCTTGTGACCCAACAGAGT
 ATGAAAACCTGTTCCCTGGATTAAGAAGCCTTTGTTGTTGAAGAATGGTGAAGGAAACACATGCTGA
 TCTGTGGCCAGCCAAACAATACCACTTGTACGCCAAATGAAGAGAGAAATGTCATGGAAGAGGGAAAA
 GACTTTACGCCCTCAAGATCTACAGCTCAACAGGAACTTGTGGGAAACCTGCTTCTCCTACTCCGGTTA
 TTGTGGCCTCCACACAGCCAACAAGAAGAAAAGAGTTTACTCGAACTAGAAGTAGATTTGGATAATTT
 GGAATTAGAAGATATTGACACAACAGATATCAATCTGGATGAAGATATTTGGATGAT

ACGCGTACGCGGCCGCTCGAG - GFP Tag - GTTTAA

Protein Sequence: >RG201789 representing NM_004766
 Red=Cloning site Green=Tags(s)

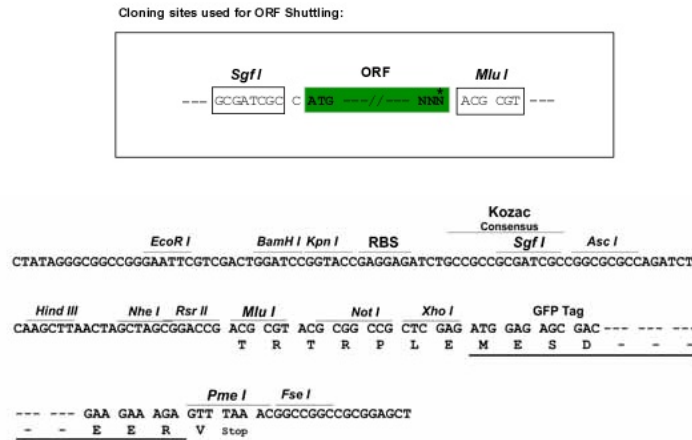
MPLRLDIKRKLTARSDRVKSVDLHPTPEWMLASLYNGSVCVWNHETQTLVKTFFVCDLPVRAAKFVARKN
 WVVVTGADDMQIRVFNNTLERVHMFEAHSYIRCI AVHPTQPFILTSDDMLIKLWDWKKWSCSQVFEG
 HTHYVMQIVINPKDNNQFASASLDRTIKVWQLGSSSPNF TLEGHEKGVNCIDYSSGGDKPYLISGADDRL
 VKIWDYQNKTCVQTLEGHAQNVSCASFHPELPIIITGSEDTVRIWHSSTYRLESTLNYGMERVWCVASL
 RGSNNVALGYDEGSIIIVKLGREEPAMSDANGKIIWAKHSEVQQANLKAMGDAEIKDGERLPLAVKDMGS
 CEIYPQTIQHNPNGRFVVVCGDGEYIIYAMALRNKSFSGAQEF AWAHDSSEYAIRESNSIVKIFKNFKE
 KKSFKPDFGAESYGGFLLGVRSVNGLAFYDWDNTELI RRIEIQPKHIFWSDSGELVCIATEESFFILKY
 LSEKVLAAQETHGVTEDEI DAFEVLGEIQEIVKTGLWVGDCF IYTSVNRLNYVVGGEIVTIAHLDR
 MYLLGYIPKDNRLYLGDKELNIIISYLLVSVLEYQTAVMRRDFSMADKVLPTIPKEQRTRVAHFLEKQGF
 KQQUALTVSTDPEHRFELALQLGELKIAYQLAVEAESEQWKQLAELAI SKCQFGLAQECLHHAQDYGGLL
 LLATASGNANMVNKLAEGERDGKNNVAFMSYFLQGVDAELLE IRTGRLPEAAFLARTYLP SQVSRVV
 KLWRENLSKVNQKAAESLADPTEYENLFPGLKEAFVVEEWVKETHADLWPAKQYPLVTPNEERNVMEEGK
 DFQPSRSTAQQELDGKPASPTPIVASHTANKEEKSLLEVDLDNLELEDIDTTDINLDEDILDD

TRTRPLE - GFP Tag - V

Restriction Sites:

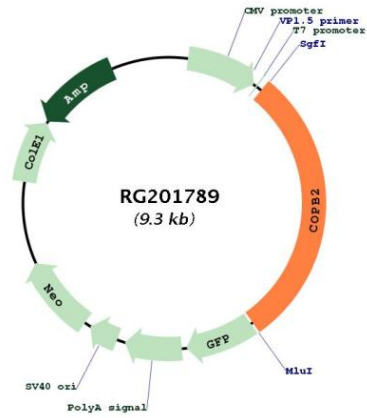
SgfI-MluI

Cloning Scheme:



ACCN:	NM_004766
ORF Size:	2718 bp
OTI Disclaimer:	The molecular sequence of this clone aligns with the gene accession number as a point of reference only. However, individual transcript sequences of the same gene can differ through naturally occurring variations (e.g. polymorphisms), each with its own valid existence. This clone is substantially in agreement with the reference, but a complete review of all prevailing variants is recommended prior to use. More info
OTI Annotation:	This clone was engineered to express the complete ORF with an expression tag. Expression varies depending on the nature of the gene.
Components:	The ORF clone is ion-exchange column purified and shipped in a 2D barcoded Matrix tube containing 10ug of transfection-ready, dried plasmid DNA (reconstitute with 100 ul of water).
Reconstitution Method:	<ol style="list-style-type: none">1. Centrifuge at 5,000xg for 5min.2. Carefully open the tube and add 100ul of sterile water to dissolve the DNA.3. Close the tube and incubate for 10 minutes at room temperature.4. Briefly vortex the tube and then do a quick spin (less than 5000xg) to concentrate the liquid at the bottom.5. Store the suspended plasmid at -20°C. The DNA is stable for at least one year from date of shipping when stored at -20°C.
RefSeq:	NM_004766.3
RefSeq Size:	3067 bp
RefSeq ORF:	2721 bp
Locus ID:	9276
UniProt ID:	P35606
Cytogenetics:	3q23
Domains:	WD40, Coatomer_WDAD
Protein Families:	Druggable Genome
Gene Summary:	The Golgi coatomer complex (see MIM 601924) constitutes the coat of nonclathrin-coated vesicles and is essential for Golgi budding and vesicular trafficking. It consists of 7 protein subunits, including COPB2.[supplied by OMIM, Jul 2002]

Product images:



Circular map for RG201789