

Product datasheet for **RG201751**

ILF2 (NM_004515) Human Tagged ORF Clone

Product data:

Product Type:	Expression Plasmids
Product Name:	ILF2 (NM_004515) Human Tagged ORF Clone
Tag:	TurboGFP
Symbol:	ILF2
Synonyms:	NF45; PRO3063
Mammalian Cell Selection:	Neomycin
Vector:	pCMV6-AC-GFP (PS100010)
E. coli Selection:	Ampicillin (100 ug/mL)
ORF Nucleotide Sequence:	>RG201751 representing NM_004515 Red=Cloning site Blue=ORF Green=Tags(s)

TTTTGTAATACGACTCACTATAGGGCGGCCGGAATTCGTCGACTGGATCCGGTACCGAGGAGATCTGCC
GCC**CGATCGCC**

ATGAGGGGTGACAGAGGCCGTGGTCTGGTGGCGCTTTGGTTCCAGAGGAGGCCAGGAGGAGGGTTCA
GGCCCTTTGTACCACATATCCCATTGACTTCTATTTGTGTGAAATGGCCTTTCCCGGGTCAAGCCAGC
ACCTGATGAAACTTCCTTCAGTGAGGCCTTGCTGAAGAGGAATCAGGACCTGGCTCCCAATTCTGCTGAA
CAGGCATCTATCCTTTCTGGTGACAAAATAAACAATGTGATTGATAATCTGATTGTGGCTCCAGGGA
CATTTGAAGTGCAAATTGAAGAAGTTCGACAGGTGGGATCCTATAAAAAGGGGACAATGACTACAGGACA
CAATGTGGCTGACCTGGTGGTACTCAAGATTCTGCCAACGTTGGAAGCTGTTGCTGCCCTGGGGAAC
AAAGTCGTGAAAAGCCTAAGAGCACAGGATCCTTCTGAAGTTTTAACCATGCTGACCAACGAAACTGGCT
TTGAAATCAGTTCCTCTGATGCTACAGTGAAGATTCTCATTACAACAGTGCCACCCAATCTTCGAAAAC
GGATCCAGAACTCCATTTGGATATCAAAGTATTGCAGAGTGCCTTAGCAGCCATCCGACATGCCCGCTGG
TTCGAGGAAAATGCTTCTCAGTCCACAGTTAAAGTTCATCAGACTACTGAAGGACTTGAGGATTTCGTT
TTCCTGGCTTTGAGCCCTCACACCCTGGATCCTTGACCTACTAGGCCATTATGCTGTGATGAACAACCC
CACCAGACAGCCTTTGGCCCTAAACGTTGCATACAGCGCTGCTTGACAGATTCTGGCTGCAGGACTGTT
CTGCCAGGTTTCAGTGGTATCACTGACCCCTGTGAGAGTGGCAACTTTAGAGTACACACAGTCATGACC
TAGAACAGCAGGACATGGTCTGCTATACAGCTCAGACTCTCGTCCGAATCCTCTCACATGGTGGCTTTAG
GAAGATCCTTGGCCAGGAGGGTATGCCAGCTATCTTGCTTCTGAAATATCTACCTGGGATGGAGTGATA
GTAACACCTTCAGAAAAGGCTTATGAGAAGCCACCAGAGAAGAAGGAAGGAGGAAGAAGAGGAGAATA
CAGAAGAACCACCTCAAGGAGAGGAAGAAGAAGCATGGAAACTCAGGAG

ACGCGTACGCGGCCGCTCGAG - GFP Tag - GTTTAA



[View online »](#)

Protein Sequence: >RG201751 representing NM_004515
 Red=Cloning site Green=Tags(s)

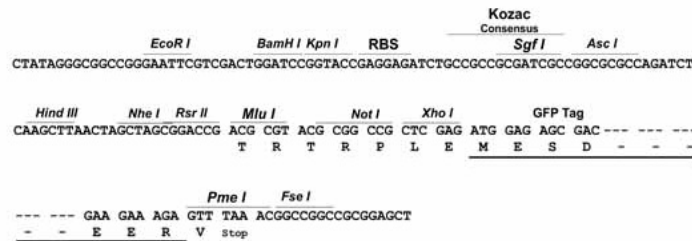
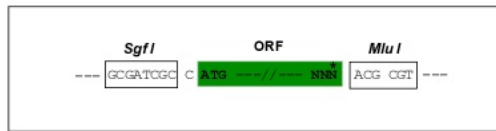
MRGDRGRGRGRFGSRGGPGGGFRPFVPHIPDFYLCEMAFPRVKPADETSEALLKRNQDLAPNSAE
 QASILSLVTKINNVIDNLIIVAPGTFEVQIEEVQVGSYKKGTTGHNVDLVLKILPTLEAVAALGN
 KVVESLRAQDPSEVL TMLTNETGFEISSSDATVKILITTVPPNLKRLDPELHLDIKVLQSALAAIRHARW
 FEENASQSTVKVLIRLLKDLRIRFPGFELTPWILDLLGHYAVMNNPTROPLALNVAYRRCLQILAAGLF
 LPGSVGITDPCESGNFRVHTVMTLEQQDMVCTAQTLLVRLSHGGFRKILGQEGDASYLASEISTWDGVI
 VTPSEKAYEKPPEKKEGEEEEENTEPPQEEEEEMETQE

TRTRPLE - GFP Tag - V

Restriction Sites: SgfI-MluI

Cloning Scheme:

Cloning sites used for ORF Shuttling:



ACCN: NM_004515

ORF Size: 1170 bp

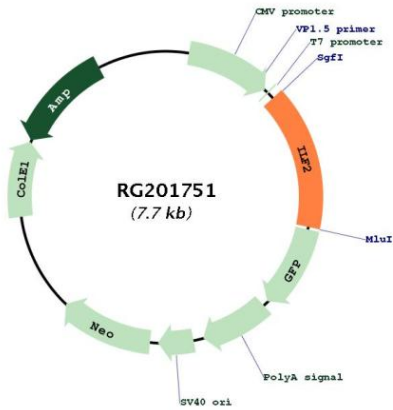
OTI Disclaimer: Due to the inherent nature of this plasmid, standard methods to replicate additional amounts of DNA in E. coli are highly likely to result in mutations and/or rearrangements. Therefore, OriGene does not guarantee the capability to replicate this plasmid DNA. Additional amounts of DNA can be purchased from OriGene with batch-specific, full-sequence verification at a reduced cost. Please contact our customer care team at custsupport@origene.com or by calling 301.340.3188 option 3 for pricing and delivery.

The molecular sequence of this clone aligns with the gene accession number as a point of reference only. However, individual transcript sequences of the same gene can differ through naturally occurring variations (e.g. polymorphisms), each with its own valid existence. This clone is substantially in agreement with the reference, but a complete review of all prevailing variants is recommended prior to use. [More info](#)

OTI Annotation: This clone was engineered to express the complete ORF with an expression tag. Expression varies depending on the nature of the gene.

Components:	The ORF clone is ion-exchange column purified and shipped in a 2D barcoded Matrix tube containing 10ug of transfection-ready, dried plasmid DNA (reconstitute with 100 ul of water).
Reconstitution Method:	<ol style="list-style-type: none">1. Centrifuge at 5,000xg for 5min.2. Carefully open the tube and add 100ul of sterile water to dissolve the DNA.3. Close the tube and incubate for 10 minutes at room temperature.4. Briefly vortex the tube and then do a quick spin (less than 5000xg) to concentrate the liquid at the bottom.5. Store the suspended plasmid at -20°C. The DNA is stable for at least one year from date of shipping when stored at -20°C.
RefSeq:	<u>NM_004515.4</u>
RefSeq Size:	1637 bp
RefSeq ORF:	1173 bp
Locus ID:	3608
UniProt ID:	<u>Q12905</u>
Cytogenetics:	1q21.3
Domains:	DZF
Protein Families:	Druggable Genome, Transcription Factors
Gene Summary:	The protein encoded by this gene is a transcription factor required for T-cell expression of the interleukin 2 gene. It also binds RNA and is an essential component for encapsidation and protein priming of hepatitis B viral polymerase. The encoded 45 kDa protein (NF45, ILF2) forms a complex with the 90 kDa interleukin enhancer-binding factor 3 (NF90, ILF3), and this complex has been shown to affect the redistribution of nuclear mRNA to the cytoplasm, to repair DNA breaks by nonhomologous end joining, and to negatively regulate the microRNA processing pathway. Knockdown of NF45 or NF90 protein retards cell growth, possibly by inhibition of mRNA stabilization. Alternative splicing results in multiple transcript variants. Related pseudogenes have been found on chromosomes 3 and 14. [provided by RefSeq, Dec 2014]

Product images:



Circular map for RG201751