

Product datasheet for **RG201742**

GC1q R (C1QBP) (NM_001212) Human Tagged ORF Clone

Product data:

Product Type:	Expression Plasmids
Product Name:	GC1q R (C1QBP) (NM_001212) Human Tagged ORF Clone
Tag:	TurboGFP
Symbol:	C1QBP
Synonyms:	COXPD33; gC1Q-R; GC1QBP; gC1qR; HABP1; p32; SF2AP32; SF2p32
Mammalian Cell Selection:	Neomycin
Vector:	pCMV6-AC-GFP (PS100010)
E. coli Selection:	Ampicillin (100 ug/mL)
ORF Nucleotide Sequence:	>RG201742 representing NM_001212 Red=Cloning site Blue=ORF Green=Tags(s)

TTTTGTAATACGACTCACTATAGGGCGGCCGGAATTCGTCGACTGGATCCGGTACCGAGGAGATCTGCC
GCC**CGATCGCC**

ATGCTGCCTCTGCTGCGCTGCGTGCCCGTGTGCTGGGCTCCTCCGTCGCCGGCCTCCGCGCTGCCCGC
CCGCCTCGCCTTCCGGCAGCTCCTGCAGCCGGCACCCCGGCTGTGCACCCGGCCCTTCGGGCTGCTCAG
CGTGCGCGCAGGTTCCGAGCGCGCGCCGGGCTCCTGCGGCTCGCGGACCTGCGCCTGTGGCTGTGGC
TGCGGCTCGTGACACCGACGGAGACAAAGCTTTTGTGATTTCTGAGTGATGAAATTAAGGAGGAAA
GAAAAATTCAGAAGCATAAAACCCTCCCTAAGATGTCTGGAGGTTGGGAGCTGGAATGAATGGGACAGA
AGCGAAATTAGTGCGGAAAGTTGCCGGGAAAAAATCACGGTCACTTTCAACATTAACAACAGCATCCCA
CCAACATTTGATGGTGAGGAGGAACCCTCGCAAGGGCAGAAGGTTGAAGAACAGGAGCCTGAACTGACAT
CAACTCCCAATTTCTGTTGAAGTTATAAAGAATGATGATGGCAAGAAGGCCCTTGTGTTGGACTGTCA
TTATCCAGAGGATGAGGTTGGACAAGAAGACGAGGCTGAGAGTGACATCTTCTATCAGGGAAGTTAGC
TTTCAGTCCACTGGCGAGTCTGAATGGAAGGATACTAATTATACACTCAACACAGATTCTTGGACTGGG
CCTTATATGACCACCTAATGGATTTCTTGCCGACCGAGGGTGGACAACACTTTTGAGATGAGCTGGT
GGAGCTCAGCACAGCCCTGGAGCACCAGGAGTACATTCTTTCTGAAGACCTCAAGAGTTTTGTCAAG
AGCCAG

ACGCGTACGCGGCCGCTCGAG - GFP Tag - GTTTAA



[View online »](#)

Protein Sequence: >RG201742 representing NM_001212
 Red=Cloning site Green=Tags(s)

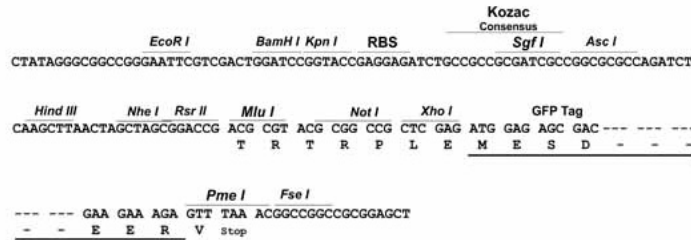
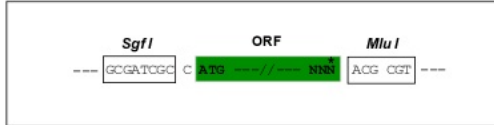
MLPLLRCVPRVLGSSVAGLRAAAPASPFRRQLLQPAPRLCTRPFGLLSVRAGSERRPGLLRPRGPCACGGC
 CGSLHTDGDKAFVDFLSDEIKERKIQKHKTLPKMSGWLELNGTEAKLVRKVAGEKITVTFNINNSIP
 PTFDGESEEPSQGQKVEEQEPELTSTPNFVVEVIKNDGKALVLDCHYPEDEVGQDEAEASDIFSIREVS
 FQSTGESEWKDTNYTLNTDSLWDALYDHLMDFLADRGVDNTFADELVELSTALEHQEYITFLEDLKS FVK
 SQ

TRTRPLE - GFP Tag - V

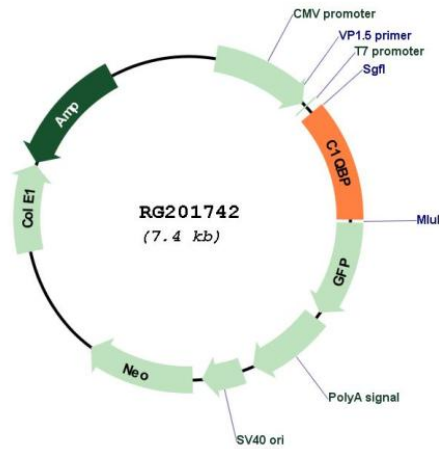
Restriction Sites: SgfI-MluI

Cloning Scheme:

Cloning sites used for ORF Shuttling:



Plasmid Map:



ACCN: NM_001212

ORF Size: 846 bp

OTI Disclaimer:	<p>Due to the inherent nature of this plasmid, standard methods to replicate additional amounts of DNA in E. coli are highly likely to result in mutations and/or rearrangements. Therefore, OriGene does not guarantee the capability to replicate this plasmid DNA. Additional amounts of DNA can be purchased from OriGene with batch-specific, full-sequence verification at a reduced cost. Please contact our customer care team at custsupport@origene.com or by calling 301.340.3188 option 3 for pricing and delivery.</p> <p>The molecular sequence of this clone aligns with the gene accession number as a point of reference only. However, individual transcript sequences of the same gene can differ through naturally occurring variations (e.g. polymorphisms), each with its own valid existence. This clone is substantially in agreement with the reference, but a complete review of all prevailing variants is recommended prior to use. More info</p>
OTI Annotation:	<p>This clone was engineered to express the complete ORF with an expression tag. Expression varies depending on the nature of the gene.</p>
Components:	<p>The ORF clone is ion-exchange column purified and shipped in a 2D barcoded Matrix tube containing 10ug of transfection-ready, dried plasmid DNA (reconstitute with 100 ul of water).</p>
Reconstitution Method:	<ol style="list-style-type: none">1. Centrifuge at 5,000xg for 5min.2. Carefully open the tube and add 100ul of sterile water to dissolve the DNA.3. Close the tube and incubate for 10 minutes at room temperature.4. Briefly vortex the tube and then do a quick spin (less than 5000xg) to concentrate the liquid at the bottom.5. Store the suspended plasmid at -20°C. The DNA is stable for at least one year from date of shipping when stored at -20°C.
RefSeq:	NM_001212.4
RefSeq Size:	1163 bp
RefSeq ORF:	849 bp
Locus ID:	708
UniProt ID:	Q07021
Cytogenetics:	17p13.2
Domains:	MAM33
Gene Summary:	<p>The human complement subcomponent C1q associates with C1r and C1s in order to yield the first component of the serum complement system. The protein encoded by this gene is known to bind to the globular heads of C1q molecules and inhibit C1 activation. This protein has also been identified as the p32 subunit of pre-mRNA splicing factor SF2, as well as a hyaluronic acid-binding protein. [provided by RefSeq, Jul 2008]</p>