

Product datasheet for **RG201739**

RBM14 (NM_006328) Human Tagged ORF Clone

Product data:

Product Type:	Expression Plasmids
Product Name:	RBM14 (NM_006328) Human Tagged ORF Clone
Tag:	TurboGFP
Symbol:	RBM14
Synonyms:	COAA; PSP2; SIP; SYTIP1; TMEM137
Mammalian Cell Selection:	Neomycin
Vector:	pCMV6-AC-GFP (PS100010)
E. coli Selection:	Ampicillin (100 ug/mL)



[View online »](#)

ORF Nucleotide Sequence:

>RG201739 representing NM_006328
 Red=Cloning site Blue=ORF Green=Tags(s)

TTTTGTAATACGACTCACTATAGGGCGGCCGGAATTCGTCGACTGGATCCGGTACCGAGGAGATCTGCC
 GCC**CGGATCGCC**

ATGAAGATATTCGTGGCAACGTCGACGGGGCGGATACGACTCCGGAGGAGCTGGCAGCCCTCTTTGCGC
 CCTACGGCACGGTCATGAGCTGCGCCGTATGAAACAGTTCGCCTTCGTGCACATGCGCGAGAACCGGG
 CGCGCTGCGCGCCATCGAAGCCCTGCACGGCCACGAGCTGCGGCCGGGGCGCGCTCGTGGTGGAGATG
 TCGCGCCCAAGGCCTCTTAATACTTGAAGATTTTCGTGGCAATGTGTGGCTGCATGCACGAGCCAGG
 AACTGCGCAGCCTCTTCGAGCGCCGCGGACGCGTCATCGAGTGTGACGTGGTAAAGACTACGCGTTTGT
 TCACATGGAGAAGGAAGCAGATGCCAAAGCCGCAATCGCGCAGCTCAACGGCAAAGAAGTGAAGGGCAAG
 CGCATCAACGTGGAACCTCCACCAAGGGTCAGAAGAAGGGCCCTGGCCTGGCTGTCCAGTCTGGGGACA
 AGACCAAGAAACCAGGGCTGGGGATACGGCCTCCCTGGAAGTGGTGGCTTCTCTGCCACCTTCGACTA
 CCAGCAGGCTTTTGGCAACAGCACTGGTGGCTTTGATGGCAAGCCCGTCAGCCACACCACCTCTTTT
 GGTGCGCACCGCAGCCCTCTGCGCCGTTCACTCCCGAGCCTCTTATGTGGCTCCTCTGACGGCCAGC
 CAGCTACCTACCGGGCCAGCCGTCCGTGTCACTGGGAGCTGCCTACAGGGCCAGCCTTCTGCCTCTTT
 GGGTGTGGCTATCGGACTCAGCCCATGACAGCCAGGCAGCCTTTACCGCGCTCAGCCCTCTGTCTCC
 CTTGGGGCACCATACAGGGGCCAGCTGGCTAGTCTAGCTCCCAGTCTGTGTCAGCTTCTTCACTCGGCC
 CATATGGTGGAGCCAGCCCTCAGCCTCGGCCCTTCTCCTATGGGGTTCAGGCAGCTGCAGCTTCTTC
 GCTCAACTCCTATGGGGTTCAGGGTTCCTCCCTTGCCCTATGGTAACCCAGCCATCCTCTTACGGCGCC
 CAGGCTGCCTCTTCTATGGGGTTCGTGACGTGCTTCTTCTACAACACCAGGGAGCAGCTTCTCCTCT
 TAGGCTCCTACGGGGCTCAGGCAGCCTCCTATGGGGCCAGTCTGCAGCCTCCTCACTAGCTTATGGGAGC
 CCAGGCAGCTTACATAATGCCAGCCCTCGGCCCTTACAATGCCAGTCTGCCCATATGCTGCACAG
 CAGGCTGCTTCTACTCTTCCCAACCTGTGCCTATGTGGCACAGCCAGCCACAGCTGCTGCCTATGCCA
 GCCAGCCAGCAGCCTACGCCGACAAGCCACTACCCCAATGGCTGGCTCCTATGGGGCCAGCCGTTGT
 GCAGACCCAGCTGAATAGTTACGGGGCCCAAGCATCAATGGGCCTTTCAGGCTCCTATGGGGCTCAGTCG
 GCTGCTGCGGCCACTGGCTCCTATGGTCCCGCAGCAGCCTACGGGGCCCAACCTTCTGCCACCCTGGCAG
 CTCCTTACCGCACTCAGTCATCAGCCTCATTGGCTGCTTCTATGCTGCCAGCAGCATCCCAGGCTGC
 TGCTCCTACCGCGCCAGCCAGGCAATGCCTACGATGGGGCAGGTGAGCCGTCTGCAGCCTACCTGTCC
 ATGTCCCAGGGGGCCGTTGCCAACGCCAACAGCACCCCGCCCTATGAGCGTACCCGCTCTCCCAC
 CCGGGCCAGCTACGACGATCCCTACAAAAGGCTGTGCGCATGTGCGAAAAGGTATGGTTCCGACCGGCG
 TTAGCCGAGCTCTCTGATTACCGCCGTTTATCAGAGTCGCAGCTTTCGTTCCGCGCTCGCCGACAAAG
 TCCTCGCTGGATTACCGTCGCTGCCGATGCCATTCCGATTACGCACGCTATTCGGGCTCCTATAATG
 ATTACCTGCGGGCGGCTCAGATGCACTCTGGCTACCAGCGCCGATG

AG**CGGACCG**ACGCGTACGCGGCCGCTCGAG – GFP Tag – GTTTAA

Protein Sequence: >RG201739 representing NM_006328
Red=Cloning site Green=Tags(s)

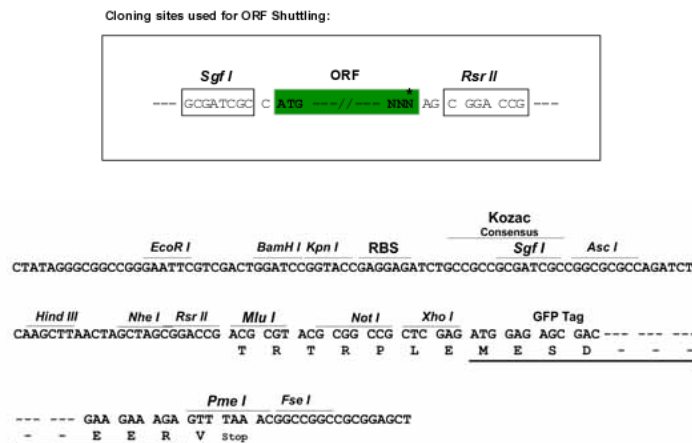
```

MKIFVGNVDGADTTPEELAAFLAPYGTVMSCAVMKQFAFVHMRENAGALRAIEALHGHELPRGRALVVEM
SRPRPLNTWKIFVGNVSAACTSQELRSLFERRGRVIECDVVKDYAFVHMEKEADAKAAIAQLNGKEVKGK
RINVELSTKGQKKGPLAVQSGDKTKKPGAGDTAFPGTGGFSATFDYQQAFGNSTGGFDGQARQPTPPFF
GRDRSPLRRSPPRASYVAPLTAQPATYRAQPSVSLGAA YRAQPSASLGVGYRTQPMTAQAASYRAQPSVS
LGAPYRQLASPSSQSAASSLGPYGGQPSASALSSYGGQAAAASSLNSYGAQGSLSASYGNQPSSYGA
QAASSYGVRAAASSYNTQGAASSLGSYGAQAASYGAQSAASSLAYGAQAASYNAPASYNAPYAAQ
QAASYSSQPAAYVAQPATAAAYASQPAAYAAQATTPMAGSYGAQPVVQTQLNSYGAQASMGLSGSYGAQS
AAAATGSYGAAYGAQPSATLAAPYRTQSSASLAASYAAQHPQAAASYRGQPGNAYDGAGQPSAA YLS
MSQGAVANANSTPPPYERTRLSPPRASYDDPYKAVAMSKRYGSDRRLAELSDYRRLSESQLSFRRSPTK
SSLDYRRLPDAHSDYARYSGSYNDYLRAAQMHSGYQRRM
    
```

SGPTRRRLE - GFP Tag - V

Restriction Sites: SgfI-RsrII

Cloning Scheme:



ACCN: NM_006328

ORF Size: 2007 bp

OTI Disclaimer: The molecular sequence of this clone aligns with the gene accession number as a point of reference only. However, individual transcript sequences of the same gene can differ through naturally occurring variations (e.g. polymorphisms), each with its own valid existence. This clone is substantially in agreement with the reference, but a complete review of all prevailing variants is recommended prior to use. [More info](#)

OTI Annotation: This clone was engineered to express the complete ORF with an expression tag. Expression varies depending on the nature of the gene.

Components: The ORF clone is ion-exchange column purified and shipped in a 2D barcoded Matrix tube containing 10ug of transfection-ready, dried plasmid DNA (reconstitute with 100 ul of water).

Reconstitution Method:

1. Centrifuge at 5,000xg for 5min.
2. Carefully open the tube and add 100ul of sterile water to dissolve the DNA.
3. Close the tube and incubate for 10 minutes at room temperature.
4. Briefly vortex the tube and then do a quick spin (less than 5000xg) to concentrate the liquid at the bottom.
5. Store the suspended plasmid at -20°C. The DNA is stable for at least one year from date of shipping when stored at -20°C.

RefSeq: [NM_006328.4](#)

RefSeq Size: 2811 bp

RefSeq ORF: 2010 bp

Locus ID: 10432

UniProt ID: [Q96PK6](#)

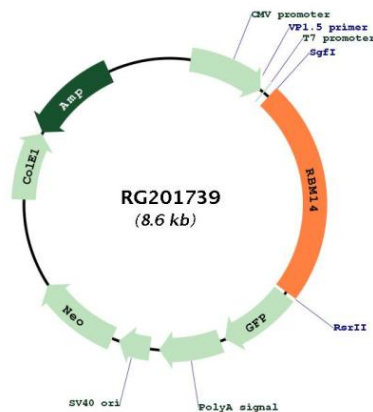
Cytogenetics: 11q13.2

Domains: RRM

Protein Families: Druggable Genome, Stem cell - Pluripotency, Transcription Factors

Gene Summary: This gene encodes a ribonucleoprotein that functions as a general nuclear coactivator, and an RNA splicing modulator. This protein contains two RNA recognition motifs (RRM) at the N-terminus, and multiple hexapeptide repeat domain at the C-terminus that interacts with thyroid hormone receptor-binding protein (TRBP), and is required for transcription activation. Alternatively spliced transcript variants encoding different isoforms (with opposing effects on transcription) have been described for this gene. [provided by RefSeq, Oct 2011]

Product images:



Circular map for RG201739