

## Product datasheet for **RG201728**

### NTF2 (NUTF2) (NM\_005796) Human Tagged ORF Clone

#### Product data:

**Product Type:** Expression Plasmids  
**Product Name:** NTF2 (NUTF2) (NM\_005796) Human Tagged ORF Clone  
**Tag:** TurboGFP  
**Symbol:** NTF2  
**Synonyms:** NTF-2; NTF2; PP15  
**Mammalian Cell Selection:** Neomycin  
**Vector:** pCMV6-AC-GFP (PS100010)  
**E. coli Selection:** Ampicillin (100 ug/mL)  
**ORF Nucleotide Sequence:** >RG201728 representing NM\_005796  
 Red=Cloning site Blue=ORF Green=Tags(s)

TTTGTAAACGACTCACTATAGGGCGGCCGGAATTCGTCGACTGGATCCGGTACCGAGGAGATCTGCC  
 GCC**CGATCGCC**

ATGGGAGACAAGCCAATTTGGGAGCAGATTGGATCCAGCTTCATTCAACATTACTACCAGTTATTTGATA  
 ATGATAGAACCAACTAGGCGCAATTTACATTGACGCGTCATGCCTTACGTGGGAAGGACAACAGTTCCA  
 GGGGAAAGCTGCCATTGTGGAGAAGTTGTCTAGCCTTCCGTTCCAGAAAATTCAGCACAGCATCACCGCG  
 CAGGACCATCAGCCCACTCCAGATAGCTGCATCATCAGCATGGTTGTGGCCAGCTTAAGGCGGATGAAG  
 ACCCATCATGGGGTTCCACCAGATGTTCTATTAAGAACATCAACGATGCTTGGGTTGCACCAATGA  
 CATGTTTCAGGCTCGCCCTGCACAACCTTTGGC

AG**CGGACCG**ACGCGTACGCGGCCGCTCGAG - GFP Tag - GTTTAA

**Protein Sequence:** >RG201728 representing NM\_005796  
 Red=Cloning site Green=Tags(s)  
 MGDKPIWEQIGSSFIQHYYQLFDNDRTQLGAIYIDASCLTWEGQQFQGKAAIVEKLSSLPFQKIQHSITA  
 QDHQPTPDSCIISMVVGQLKADEDPIMGFHQMFLKNINDAWVCTNDMFRLALHNFG

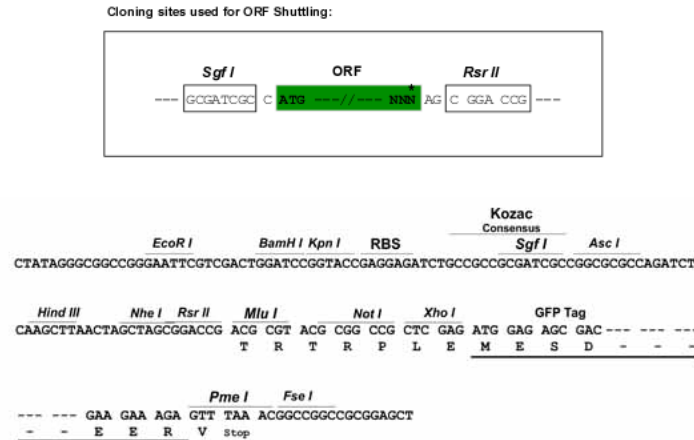
SGPTRRRLE - GFP Tag - V

**Restriction Sites:** SgfI-RsrII



[View online »](#)

## Cloning Scheme:



ACCN: NM\_005796

ORF Size: 381 bp

OTI Disclaimer: The molecular sequence of this clone aligns with the gene accession number as a point of reference only. However, individual transcript sequences of the same gene can differ through naturally occurring variations (e.g. polymorphisms), each with its own valid existence. This clone is substantially in agreement with the reference, but a complete review of all prevailing variants is recommended prior to use. [More info](#)

OTI Annotation: This clone was engineered to express the complete ORF with an expression tag. Expression varies depending on the nature of the gene.

Components: The ORF clone is ion-exchange column purified and shipped in a 2D barcoded Matrix tube containing 10ug of transfection-ready, dried plasmid DNA (reconstitute with 100 ul of water).

Reconstitution Method:

1. Centrifuge at 5,000xg for 5min.
2. Carefully open the tube and add 100ul of sterile water to dissolve the DNA.
3. Close the tube and incubate for 10 minutes at room temperature.
4. Briefly vortex the tube and then do a quick spin (less than 5000xg) to concentrate the liquid at the bottom.
5. Store the suspended plasmid at -20°C. The DNA is stable for at least one year from date of shipping when stored at -20°C.

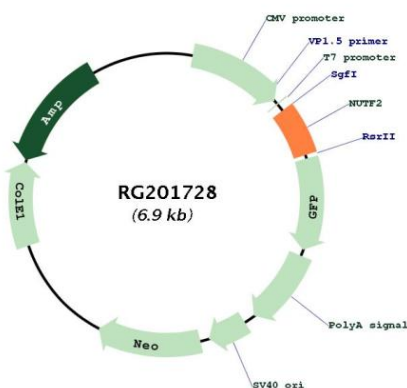
Note: Plasmids are not sterile. For experiments where strict sterility is required, filtration with 0.22um filter is required.

RefSeq: [NM\\_005796.3](#)

RefSeq Size: 894 bp

RefSeq ORF:	384 bp
Locus ID:	10204
UniProt ID:	<a href="#">P61970</a>
Cytogenetics:	16q22.1
Domains:	NTF2
Gene Summary:	This gene encodes a cytosolic factor that facilitates protein transport into the nucleus. The encoded protein is required for nuclear import of the small Ras-like GTPase, Ran which is involved in numerous cellular processes. This protein also interacts with the nuclear pore complex glycoprotein p62. [provided by RefSeq, Apr 2016]

## Product images:



Circular map for RG201728