

Product datasheet for **RG201722**

RHOD (NM_014578) Human Tagged ORF Clone

Product data:

Product Type: Expression Plasmids
Product Name: RHOD (NM_014578) Human Tagged ORF Clone
Tag: TurboGFP
Symbol: RHOD
Synonyms: ARHD; Rho; RHOHP1; RHOM
Mammalian Cell Selection: Neomycin
Vector: pCMV6-AC-GFP (PS100010)
E. coli Selection: Ampicillin (100 ug/mL)
ORF Nucleotide Sequence: >RG201722 representing NM_014578
Red=Cloning site Blue=ORF Green=Tags(s)

TTTTGTAATACGACTCACTATAGGGCGGCCGGAATTCGTCGACTGGATCCGGTACCGAGGAGATCTGCC
GCC**CGATCGCC**

ATGACGGCGCCAGGCCGCGGGTGAGGAGGCCACCAGGCGTGCGGTCCGTCAAGGTGGTCTGGTGG
GCGACGGCGGCTGCGGGAAGACGTCGCTGCTGATGGTCTTCGCCGATGGGGCCTTCCCCGAGAGCTACAC
CCCCACGGTGTGGAGCGGTACATGGTCAACCTGCAAGTCAAAGGCAAACCTGTGCACCTCCACATCTGG
GACACAGCAGGGCAAGATGACTATGACCGCCTGCGGCCCTGTTCTACCCTGACGCCAGCGTCCTGCTGC
TTTGCTTCGATGTCACCAGCCGAACAGCTTTGACAACATCTTTAACCGTGGTACCCAGAAGTGAATCA
TTTCTGCAAGAAGTACCCATCATCGTCGTGGGCTGCAAGACTGACCTGCGCAAGGACAAATCACTGGTG
AAACAAGCTCCGAAGAAACGGATTGGAGCCTGTGACCTACCACAGGGGCCAGGAGATGGCGAGGTCCGTGG
GCGCGGTGGCCTACCTCGAGTGTCTCGGCTCGGCTCCATGACAACGTCCACGCCGTCTCCAGGAGGCCGC
CGAGGTGGCCCTCAGCAGCCGCGGTGCAACTTCTGGCGCGGATTACCCAGGGCTTTTGCCTGGTGACC

ACGCGTACGCGGCCGCTCGAG - GFP Tag - GTTTAA

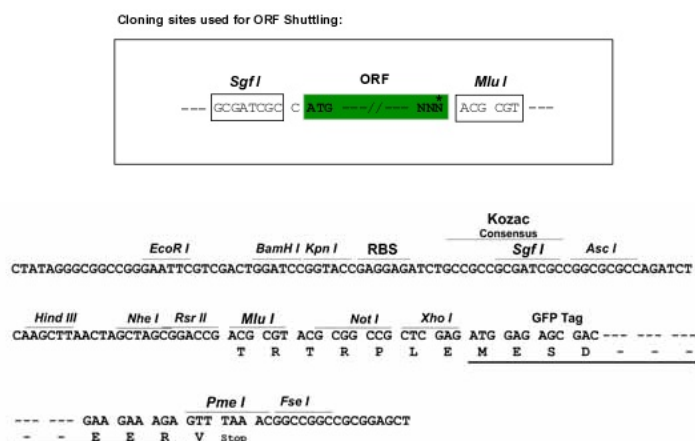
Protein Sequence: >RG201722 representing NM_014578
Red=Cloning site Green=Tags(s)

MTAAQAAGEEAPPGVRSVKVVLVGDGGCGKTSLLMVFADGAFPESTPTVFERYMVNLQVKGKPVHLHIH
DTAGQDDYDRLRPLFPDASVLLLCFDVTSFNDFNFRWYPEVNHFKKVPVIVVGGCKTLRDKSLV
NKLRRNGLEPVTYHRGQEMARSVGAVAYLECSARLHDNVHAVFQEAEEVALSSRGRNFWRRITQGFVVT

TRTRPLE - GFP Tag - V

Restriction Sites: Sgfl-MluI



Cloning Scheme:


ACCN: NM_014578

ORF Size: 630 bp

OTI Disclaimer: The molecular sequence of this clone aligns with the gene accession number as a point of reference only. However, individual transcript sequences of the same gene can differ through naturally occurring variations (e.g. polymorphisms), each with its own valid existence. This clone is substantially in agreement with the reference, but a complete review of all prevailing variants is recommended prior to use. [More info](#)

OTI Annotation: This clone was engineered to express the complete ORF with an expression tag. Expression varies depending on the nature of the gene.

Components: The ORF clone is ion-exchange column purified and shipped in a 2D barcoded Matrix tube containing 10ug of transfection-ready, dried plasmid DNA (reconstitute with 100 ul of water).

Reconstitution Method:

1. Centrifuge at 5,000xg for 5min.
2. Carefully open the tube and add 100ul of sterile water to dissolve the DNA.
3. Close the tube and incubate for 10 minutes at room temperature.
4. Briefly vortex the tube and then do a quick spin (less than 5000xg) to concentrate the liquid at the bottom.
5. Store the suspended plasmid at -20°C. The DNA is stable for at least one year from date of shipping when stored at -20°C.

RefSeq: [NM_014578.4](#)

RefSeq Size: 1111 bp

RefSeq ORF: 633 bp

Locus ID: 29984

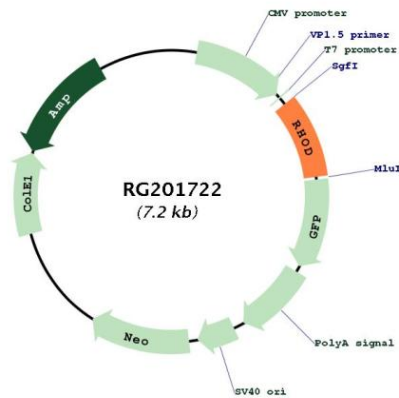
UniProt ID: [O00212](#)

Cytogenetics: 11q13.2

Protein Pathways: Axon guidance

Gene Summary: Ras homolog, or Rho, proteins interact with protein kinases and may serve as targets for activated GTPase. They play a critical role in muscle differentiation. The protein encoded by this gene binds GTP and is a member of the small GTPase superfamily. It is involved in endosome dynamics and reorganization of the actin cytoskeleton, and it may coordinate membrane transport with the function of the cytoskeleton. Two transcript variants encoding different isoforms have been found for this gene. [provided by RefSeq, Jul 2014]

Product images:



Circular map for RG201722