

Product datasheet for **RG201710**

PDIA6 (NM_005742) Human Tagged ORF Clone

Product data:

Product Type:	Expression Plasmids
Product Name:	PDIA6 (NM_005742) Human Tagged ORF Clone
Tag:	TurboGFP
Symbol:	PDIA6
Synonyms:	ERP5; P5; TXNDC7
Vector:	pCMV6-AC-GFP (PS100010)
E. coli Selection:	Ampicillin (100 ug/mL)
Cell Selection:	Neomycin
ORF Nucleotide Sequence:	>RG201710 representing NM_005742 Red=Cloning site Blue=ORF Green=Tags(s)

TTTTGTAATACGACTCACTATAGGGCGGCCGGAATTCGTCGACTGGATCCGGTACCGAGGAGATCTGCC
GCC**CGGATCGCC**

ATGGCTCTCTGGTGCTCGGTCTGGTGAGCTGTACCTTCTTTCTGGCAGTGAATGGTCTGTATTCCTCTA
GTGATGATGTGATCGAATTAACCCATCGAATTTCAACCGAGAAGTTATTCAGAGTGATAGTTTGTGGCT
TGTAGAATTCTATGCTCCATGGTGTGGTCACTGTCAAAGATTAACACCAGAATGGAAGAAAGCAGCAACT
GCATTAAGGATGTTGTCAAAGTTGGTGCAGTTGATGCAGATAAGCATCATTCCCTAGGAGGTCAGTATG
GTGTTCCAGGGATTTCTACCATTAAAGATTTTTGGATCCAACAAAAACAGACCAGAAGATTACCAAGTGG
CAGAACTGGTGAAGCCATTGTAGATGCTGCGCTGAGTGTCTGCGCCAGCTCGTGAAGGATCGCCTCGGG
GGACGGAGCGGAGGATACAGTTCTGGAAAAAAGGCAGAAGTGATAGTTCAAGTAAGAAGGATGTGATTG
AGCTGACAGACGACAGCTTTGATAAGAAATGTTCTGGACAGTGAAGATGTTTGGATGGTTGAGTTCATGC
TCCTTGGTGTGGACACTGCAAAAACCTAGAGCCAGAGTGGGCTGCCGAGCTTCAGAAGTAAAAGAGCAG
ACGAAAGGAAAAGTGAACCTGGCAGCTGTGGATGCTACAGTCAATCAGGTTCTGGCCTCCGATACGGGA
TTAGAGGATTTCTACAATCAAGATATTTAGAAAGCGAGTCTCCTGTGGATTATGACGGTGGCGCGGAC
AAGATCCGACATCGTGTCCCGGCCCTTGATTTGTTTTCTGATAACGCCACCTCTGAGCTGCTTGAG
ATTATCAACGAGGACATTGCCAAGAGGAGCTGTGAGGAGCACCAGCTCTGTGTTGTGGCTGTGCTGCCCC
ATATCCTTGATACTGGAGCTGCAGGCAGAAATTCTATCTGGAAGTTCTTCTGAAGTTGGCAGACAAATA
CAAAAAGAAAATGTGGGGTGGCTGTGGACAGAAGCTGGAGCCAGTCTGAACTTGAGACCGCTTGGGG
ATTGGAGGTTTGGGTACCCGCCATGGCCGCATCAATGCACGCAAGATGAAATTTGCTCTGCTAAAAG
GCTCCTCAGTGAGCAAGGCATCAACGAGTTTCTCAGGGAGCTCTTTTTGGCGTGGCTCCACGGCACC
TGTAGGAGGCGGGCTTTCCCTACCATCGTTGAGAGAGAGCCTTGGGACGGCAGGGATGGCGAGCTTCCC
GTGGAGGATGACATTGACCTCAGTGATGTGGAGCTTGATGACTTAGGAAAGATGAGTTG

ACGCGTACGCGGCCGCTCGAG - GFP Tag - GTTTAA



[View online »](#)

Protein Sequence: >RG201710 representing NM_005742
 Red=Cloning site Green=Tags(s)

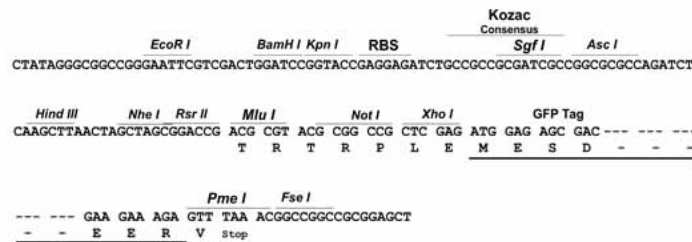
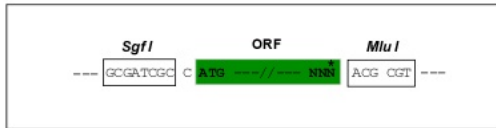
MALLVLGLVSCFFFLAVNGLYSSSDVIELTPSNFNREVIQSDSLWLVFYPWCGHCQRLTPEWKAAT
 ALKDVKVKGAVDADKHHSLGGQYGVQGFPTIKIFGSNKNRPEDYQGGRTGEAIVDAALSALRQLVKDRLG
 GRSGGYSSGKQGRSDSSSKKDVIELTDDSFDKNVLDSDEVMMVEFYAPWCGHCKNLEPEWAAAASEVKEQ
 TKGKVKLAAVDATVNVQLASRYGIRGFPTIKIFQKGESPVVDYDGGRTSRSDIVSRALDLFSDNAPPPELLE
 IINEDIAKRTCEEHQLCVVAVLPHILDTGAAGRNSYLEVLLKLADKYKKKMWGLWTEAGAQSLELTALG
 IGGFGYPAMAAINARKMKFALLKGSFSEQGINEFLRELSFGRGSTAPVGGGAFPTIVEREPWDGRDGELP
 VEDDIDLSDVELDDLKDEL

TRTRPLE - GFP Tag - V

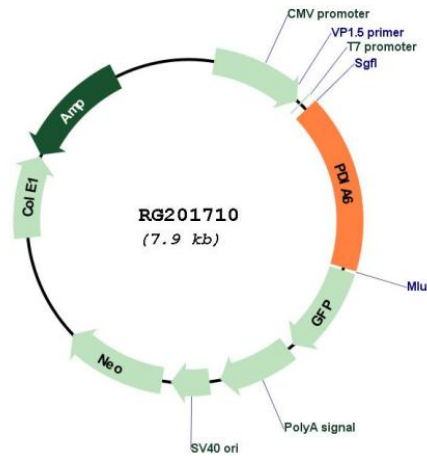
Restriction Sites: SgfI-MluI

Cloning Scheme:

Cloning sites used for ORF Shutting:



Plasmid Map:



ACCN: NM_005742

ORF Size:	1320 bp
OTI Disclaimer:	<p>Due to the inherent nature of this plasmid, standard methods to replicate additional amounts of DNA in E. coli are highly likely to result in mutations and/or rearrangements. Therefore, OriGene does not guarantee the capability to replicate this plasmid DNA. Additional amounts of DNA can be purchased from OriGene with batch-specific, full-sequence verification at a reduced cost. Please contact our customer care team at custsupport@origene.com or by calling 301.340.3188 option 3 for pricing and delivery.</p> <p>The molecular sequence of this clone aligns with the gene accession number as a point of reference only. However, individual transcript sequences of the same gene can differ through naturally occurring variations (e.g. polymorphisms), each with its own valid existence. This clone is substantially in agreement with the reference, but a complete review of all prevailing variants is recommended prior to use. More info</p>
OTI Annotation:	This clone was engineered to express the complete ORF with an expression tag. Expression varies depending on the nature of the gene.
Components:	The ORF clone is ion-exchange column purified and shipped in a 2D barcoded Matrix tube containing 10ug of transfection-ready, dried plasmid DNA (reconstitute with 100 ul of water).
Reconstitution Method:	<ol style="list-style-type: none">1. Centrifuge at 5,000xg for 5min.2. Carefully open the tube and add 100ul of sterile water to dissolve the DNA.3. Close the tube and incubate for 10 minutes at room temperature.4. Briefly vortex the tube and then do a quick spin (less than 5000xg) to concentrate the liquid at the bottom.5. Store the suspended plasmid at -20°C. The DNA is stable for at least one year from date of shipping when stored at -20°C.
RefSeq:	NM_005742.4
RefSeq Size:	2344 bp
RefSeq ORF:	1323 bp
Locus ID:	10130
UniProt ID:	Q15084
Cytogenetics:	2p25.1
Domains:	thioired
Protein Families:	Druggable Genome
Gene Summary:	<p>This gene encodes a member of the disulfide isomerase (PDI) family of endoplasmic reticulum (ER) proteins that catalyze protein folding and thiol-disulfide interchange reactions. The encoded protein has an N-terminal ER-signal sequence, two catalytically active thioredoxin (TRX) domains, a TRX-like domain, and a C-terminal ER-retention sequence. This protein inhibits the aggregation of misfolded proteins and exhibits both isomerase and chaperone activity. Alternative splicing results in multiple transcript variants encoding different isoforms. [provided by RefSeq, Dec 2016]</p>