

## Product datasheet for **RG201702**

### **CDC5L (NM\_001253) Human Tagged ORF Clone**

#### **Product data:**

Product Type:	Expression Plasmids
Product Name:	CDC5L (NM_001253) Human Tagged ORF Clone
Tag:	TurboGFP
Symbol:	CDC5L
Synonyms:	CDC5; CDC5-LIKE; CEF1; dj319D22.1; PCDC5RP
Mammalian Cell Selection:	Neomycin
Vector:	pCMV6-AC-GFP (PS100010)
E. coli Selection:	Ampicillin (100 ug/mL)



[View online »](#)

ORF Nucleotide  
Sequence:

>RG201702 representing NM\_001253  
 Red=Cloning site Blue=ORF Green=Tags(s)

TTTTGTAATACGACTCACTATAGGGCGGCCGGAATTCGTCGACTGGATCCGGTACCGAGGAGATCTGCC  
 GCC**CGCATCGCC**

ATGCCTCGAATTATGATCAAGGGGGCGTATGGAGGAATACCGAGGATGAAATCTGAAAGCAGCGGTAA  
 TGAATATGGGAAAAATCAGTGGTCTAGGATTGCCTCATTGCTGCATAGAAAAATCAGCAAAGCAGTGCAA  
 AGCCAGATGGTATGAATGGCTGGATCCAAGCATTAAAGAAGACAGAATGGTCCAGAGAAGAAGAGGAAAAA  
 CTCTTGCACTTGGCCAAGTTGATGCCAACTCAGTGGAGGACCATTGCTCCAATCATTGGAAGAACAGCGG  
 CCCAGTGTCTAGAACACTATGAATTTCTTGGATAAAGCTGCCAAAGAGACAATGAAGAGGAAACAAC  
 AGATGATCCACGAAAACCTAAACCTGGAGAAATAGATCCAATCCAGAAAACAAACCAGCGCGCCTGAT  
 CCAATTGATATGGATGAGGATGAACTTGAGATGCTTTCTGAAGCCAGAGCCCGCTTGGCTAATACTCAGG  
 GAAAGAAGGCCAAGAGGAAAGCAAGAGAGAAAACAATTGGAAGAAGCAAGACGTCTTGTGCCCTCCAAAA  
 AAGAAGAGAACTTCGAGCAGCTGGCATAGAAATTCAGAAGAAAAGAAAAGGAAGAGAGGAGTTGATTAT  
 AATGCCGAAATCCATTTGAAAAAAGCCTGCCCTTGGTTTTATGATACTTCTGAGGAAAACACCAAG  
 CTCTTGACGCAGATTTACGGAATTAAGACAACAGGATCTTGATGGGGAGCTAAGATCTGAAAAAGAAGG  
 AAGAGATAGAAAAAAGACAAACAGCATTGAAAAAGGAAAAAGAATCTGATTTACCATCAGCTATTCTT  
 CAACTAGTGGTGTCTGAATTTACTAAAAAGAGAAGCAAACACTAGTACTTCCCTGCCCTCAGATTTAG  
 ATGCAGAACTCCAGGAAGTTGTAAGTAGGCCAAGCGAGTGAATTCACAGTCAAACCTGCCGAGGAATC  
 TGGCATAACAAATTCGCTTCCAGTACACTTTGTCTGAGTACAATGTCACCAACAACAGCGTTGCTCTT  
 AGAACACCACGAACACCAGCTTCCAGGACAGAATTCTGCAGGAAGCCCAGAACCTCATGGCCCTACCA  
 ATGTGGACACCCATTGAAAGGTGGACTTAATACCCCATTCATGAGAGTGACTTCTCAGGTGTAACCTC  
 ACAGCGACAAGTTGTACAGACTCCAACACAGTTCTCTACTCCATTCAGGACTCCTTCTAATGGAGCT  
 GAAGGGCTGACTCCCGGAGTGGAAACACTCCCAACAGTTATTAACCTACTCCGGGTAGAATCCTC  
 TTCGAGACAAGTTAAACATTAATCCCGAGGATGGAATGGCAGACTATAGTATCCCTTACGTGAAGCA  
 GATGGAAGAGAAATCCCGAGAACATCTCCGTTTAGGGTTGTTGGGCTTCCCTGCCCTAAGAATGATTTT  
 GAAATTGTTCTACCAGAAAATGCCGAGAAGGAGCTGGAAGAAGCTGAAATAGATGATACTTACATTGAAG  
 ATGCTGCTGATGGATGCTCGAAAGCAGGCCATACGAGATGCAGAGCGTGAAGGAAATGAAACGAAT  
 GCATAAAGCTGTCAGAAAAGATCTGCCAAGACCATCAGAAGTAAATGAACTATTCTAAGACCCTTAAAT  
 GTAGAACCGCCTTAAACAGATTTACAGAAAAGTGAAGAATAATCAAAAAAGAAATGATCACAATGCTTC  
 ATTATGACCTTCTACATCACCTTATGAACCATCTGGAATAAAAAAGGCAAAACTGTAGGGTTTGGTAC  
 CAATAATTCAGAGCACATTACCTATCTGGAACATAATCCTTATGAAAAGTTCTCCAAAGAAGAGCTGAAA  
 AAGGCCAGGATGTTTTGGTGCAGGAGATGGAAGTGGTTAAACAAGGAATGAGCCATGGAGAGCTCTCAA  
 GTGAAGCTTATAACCAGGTGTGGGAAGAATGCTACAGTCAAGTTTATATCTTCTGGGCAGAGCCGCTA  
 CACACGGGCAATCTGGCTAGTAAAAAGGACAGAATTGAATCACTTGAAAAGAGGCTCGAGATAAACAGG  
 GGTACATGACGACAGAAGCCAAGAGGGCTGCAAAGATGGAAAAGAAGATGAAAATTTGCTTGGGGTT  
 ACCAGTCTCGTGTATGGGCTCATGAAACAGTTGAATGACTTATGGGACCAATTTGAACAGGCTCACTT  
 GGAGTTACGCACTTTTGAAGAAGTCAAGAAACATGAAGATTCTGCTATTCGCCGAGGCTAGAGTGTCTA  
 AAAGAAGACGTTTCAGCGACAACAAGAAAAGAGAAAAGAACTTCAACATAGATATGCTGATTTGCTGCTGG  
 AGAAAAGAGACTTTAAAGTCAAAATTC

**ACCGT**ACGCGGCCGCTCGAG - GFP Tag - GTTTAA

**Protein Sequence:** >RG201702 representing NM\_001253  
 Red=Cloning site Green=Tags(s)

```

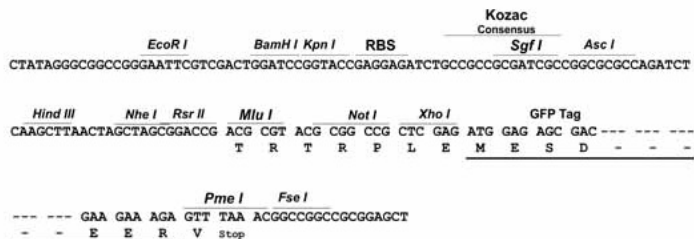
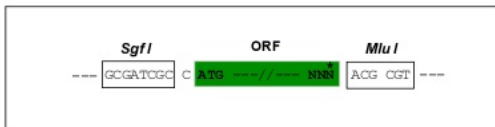
MPRIMIKGGVWRNTEDEILKAAVMKYGKNQWSRIASLLHRKSAKQCKARWYEWLDPSIKKTEWSREEEEK
LLHLAKLMPTQWRTIAPIIGRTAAQCLEHYEFLLDKAAQRDNEEETDDPRKLPGEIDPNPETKPARPD
PIDMDEDELEMLSEARARLANTQGKKAKRKAREKQLEEARRLAALQKRRELRAAGIEIQKRRKRKRGVDY
NAEIPFEKKPALGFYDTSEENYQALDADFRLRQQDLGELRSEKEGRDRKKDKQHLKRRKESDLP SAIL
QTSGVSEFTKKRSKLVLPAPQISDAELQEVVKGQASEIARQTAEEESGITNSASSTLLSEYNVTNNSVAL
RTPRTPASQDRILQEAQNL MAL TNVDTP LKGGLNTP LHE SDFSGVTPQRQVVQTPNTVLSTPFRTPSNGA
EGLTPRS GTTPKPVINSTPGRTP LRDKLNINPEDGMADYSDPSYVKQMERESREHLRLG LLGLPAPKNDF
EIVLPENAEKELEEREIDDTYIEDAADVDARKQAIRDAERVKEMKRMHKAVQKDLPRPSEVNETILRPLN
VEPPLTDLQKSEELIKKEMITMLHYDLLHHPYEPGNGKKGKTVGFGTNNSEHITYLEHNPYEKFSKEELK
KAQDVLVQEMEVVKQGM SHGELSSEAYNQVWEECSQVLYLPGQSRYTRANLASKKDRIESLEKRLEINR
GHMTTEAKRAAKMEKKMILLGGYQSRAMGLMKQLNDLWDQIEQAHL ELRTFEELKKHEDSAIPRRLECL
KEDVQRQQEREKELQHR YADLLLEKETLKS KF
  
```

TRTRPLE - GFP Tag - V

**Restriction Sites:** Sgfl-MluI

Cloning Scheme:

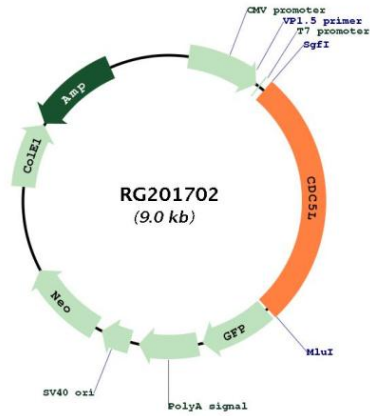
Cloning sites used for ORF Shutting:



ACCN: NM\_001253  
 ORF Size: 2406 bp

<b>OTI Disclaimer:</b>	<p>Due to the inherent nature of this plasmid, standard methods to replicate additional amounts of DNA in E. coli are highly likely to result in mutations and/or rearrangements. Therefore, OriGene does not guarantee the capability to replicate this plasmid DNA. Additional amounts of DNA can be purchased from OriGene with batch-specific, full-sequence verification at a reduced cost. Please contact our customer care team at <a href="mailto:custsupport@origene.com">custsupport@origene.com</a> or by calling 301.340.3188 option 3 for pricing and delivery.</p> <p>The molecular sequence of this clone aligns with the gene accession number as a point of reference only. However, individual transcript sequences of the same gene can differ through naturally occurring variations (e.g. polymorphisms), each with its own valid existence. This clone is substantially in agreement with the reference, but a complete review of all prevailing variants is recommended prior to use. <a href="#">More info</a></p>
<b>OTI Annotation:</b>	<p>This clone was engineered to express the complete ORF with an expression tag. Expression varies depending on the nature of the gene.</p>
<b>Components:</b>	<p>The ORF clone is ion-exchange column purified and shipped in a 2D barcoded Matrix tube containing 10ug of transfection-ready, dried plasmid DNA (reconstitute with 100 ul of water).</p>
<b>Reconstitution Method:</b>	<ol style="list-style-type: none"><li>1. Centrifuge at 5,000xg for 5min.</li><li>2. Carefully open the tube and add 100ul of sterile water to dissolve the DNA.</li><li>3. Close the tube and incubate for 10 minutes at room temperature.</li><li>4. Briefly vortex the tube and then do a quick spin (less than 5000xg) to concentrate the liquid at the bottom.</li><li>5. Store the suspended plasmid at -20°C. The DNA is stable for at least one year from date of shipping when stored at -20°C.</li></ol>
<b>RefSeq:</b>	<a href="#">NM_001253.4</a>
<b>RefSeq Size:</b>	3012 bp
<b>RefSeq ORF:</b>	2409 bp
<b>Locus ID:</b>	988
<b>UniProt ID:</b>	<a href="#">Q99459</a>
<b>Cytogenetics:</b>	6p21.1
<b>Domains:</b>	myb_DNA-binding
<b>Protein Families:</b>	Transcription Factors
<b>Protein Pathways:</b>	Spliceosome
<b>Gene Summary:</b>	<p>The protein encoded by this gene shares a significant similarity with Schizosaccharomyces pombe cdc5 gene product, which is a cell cycle regulator important for G2/M transition. This protein has been demonstrated to act as a positive regulator of cell cycle G2/M progression. It was also found to be an essential component of a non-snRNA spliceosome, which contains at least five additional protein factors and is required for the second catalytic step of pre-mRNA splicing. [provided by RefSeq, Jul 2008]</p>

Product images:



Circular map for RG201702