

## Product datasheet for **RG201663**

### CEP72 (NM\_018140) Human Tagged ORF Clone

#### Product data:

Product Type:	Expression Plasmids
Product Name:	CEP72 (NM_018140) Human Tagged ORF Clone
Tag:	TurboGFP
Symbol:	CEP72
Mammalian Cell Selection:	Neomycin
Vector:	pCMV6-AC-GFP (PS100010)
E. coli Selection:	Ampicillin (100 ug/mL)



[View online »](#)

**ORF Nucleotide  
Sequence:**

>RG201663 representing NM\_018140  
 Red=Cloning site Blue=ORF Green=Tags(s)

TTTTGTAATACGACTCACTATAGGGCGGCCGGGAATTCGTCGACTGGATCCGGTACCGAGGAGATCTGCC  
 GCC**CGCATCGCC**

ATGGCGGGCTGGCCCTCGGCTGGTGTGCTGAGCGAGGAGCGGTTCCGGGCAAGAGCGGCTTAGGGCCTC  
 ACCGCGACTGGCTGAGCTTCAGTCATTGTCTATTCTGGAACCTACCAAGAGAAGATCACCCACCTGGG  
 ACATTCTCTGATGAGTTTAAACAGGCTGAAATCTTTGGATCTCTCGCGCAACTCCTTGTTAGTCTGGAG  
 GGCATTACGTACCTGACTGCATTGGAGAGTCTCAATCTCTACTACAACCTGCATCTCCTCGTTGGCAGAAG  
 TGTTTTCGGCTCCACGCCTTAACCGAGCTCGTGGATGTGGACTTCCGGCTGAACCCCGTGGTGAAGGTTGA  
 GCCTGACTACCGCCTTTTGTGTGCACCTGCTCCCAAGCTCCAGCAGCTGGACGATCGCCCGTGAGA  
 GCAAGCGAGCGGAAGGCTTCCCGACTGCATTTGCATCAGAGGACTCACTCGACTCCAAAGAGAGCGTCC  
 CAGCTTCTTTGAAAGAGGGCAGACCACACCACCCAGAGCAAGTGCACCGAGGCCTTGCCAAGCAGAG  
 CCTGGTATGGATGCGGATGACGAGGCAGTCTGAACCTCATTGCAGAGTGCAGTGGGACTCGGCAGG  
 CCTCCCGGAGCACGAGCTTCAAGCCAGAGGGGGTGGAGCCGACTCTCGTGGTTCCCAAGATCCAGAC  
 ATCTGTTGAGCCCGAGTTGGTACAGTACCAGTGTGGGACTCTGGGAAGCAGGGCCGTGAGACGAGGAG  
 GAGCAGCTGCAGAGGGTGTCTGTGGAGAAGATGCCTTGGAGCCAGCTCTGTGGAGAGCTTCCGCCACTG  
 TACGGAGCGGAGCCAGAGGCCTCCCGTGCACCCAGGCCACACACCTACTTACCCACACCCAGACTCCA  
 TGGATACCGAGGACTCGGCCTTCTCAGAAGTTGGATTTGTGAGGAAATGGTGCCTGGTCCCCTGCC  
 AGCCCCGGAAGTGCAGGAAGCAAGAATGCCTGTTGGAAGATTCCAGACGTTTTCCGACCGAGGAGGT  
 TTGGGCTGCCCGGAGAGAAGTCAATGGGTCTCCGTGCCAAGGAGAGCTGAGCAGACAGGACAGCTCAG  
 AAAGCAGGAACCGGAGGACCTTGTCTCAGCTGAGGCCTCGGAGACTGAGGAGCAGAGGTTCTCGGGTGT  
 GACCCGACACAGAGAGCGCTTCCCGGGTCACTCGGCTCTACCCGGGAAGAAGACGGCCCTGCAGGCG  
 GCGCTCTGAGAGCCTTGGACTGGTGCAGGAGTGGGGCGGCTGCAGGTCCTGCACAGCAACG  
 AGGCATTCCTTGCTCAGGCAAGACACATCTTGTACATCTGTTGAAGAATTCACAGCAGCTCAGGACAGCTC  
 TGCGATGGTGGTGAAGATGTCGGCTCCCTGGCTCTGGAGAGTAAGTCCCTGCAAAGCCGCTTGTGAG  
 CAGCAGCAGCAGCACGCCGGGAGATGAGCGAGGTGACGGCGGAGCTGCCACACACACAAGGAGCTGG  
 ATGATTTGAGACAACATTTAGATAAATCTTTGGAAGAGAACAGTAGGTTAAAATCGCTTTTGTGAGTAT  
 GAAAAAGGAGTGAAGAGTGCAGACTGCAGCCAGTAAATTTGCAGATCGCTGGACTCAAACAAGT  
 GTGAAGAGGCTGTGTGGCAGATTTGTGAACTGAAGCAGCACCTGGAGCACTACGACAAGATCCAGGAGC  
 TACAGCAGATGCTGCAGGAGAGCCACAGCTCCCTGGTCAACCAATGAACACCTGCTGCAGGAGCTGAG  
 CCAGGTGCGGGCGCAGCACAGAGCCGAGGTGGAGCAGATGCACTGGAGCTACCAGGAGCTCAAGAAGACC  
 ATGGCCCTGTTTCCACACAGCAGCGCCAGCCATGGAGGCTGCCAGGCCTGC

**ACGCGTACGCGGCCGCTCGAG** – GFP Tag – GTTTAA

**Protein Sequence:**

>RG201663 representing NM\_018140  
 Red=Cloning site Green=Tags(s)

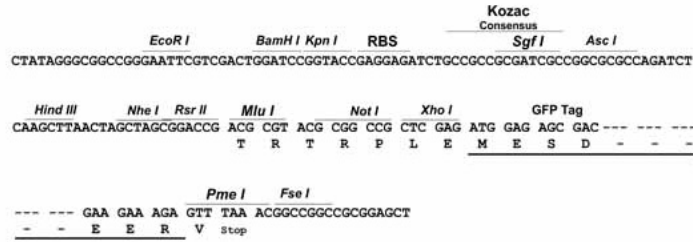
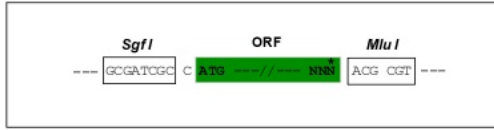
MARAGPRLVLSEEAVRAKSGLGPHRDLAELQSLIPGTYQEKITHLGHSLMSLTGLKSLDLSRNSLVSL  
 GIQYLTALESLNLYNCISSLAIEVFRLHALTELVDVDFRLNPVVKVEPDYRLFVVHLLPKLQQLDDR  
 ASERKASRLHFAEEDSLDSKESVPASLKEGRPHHPRAKCTEALAKQSLVMDADDEAVLNLIAECEWDLGR  
 PPGSTFSFQKGREADSRGSRHLLSPQLVQYQCGDSGKQGRETRRSSCRGCCLEKMPWSQLCGELPPL  
 YGAEPEASRAPRPHTYFTHPDSMDTEDSASSQKLDLSEGMVPGPLPAPGKCRKRMPVGRFQTFSDQEG  
 LGCPERTHGSSVPKESLSRQDSSSRNRTLSPQEAASETEEQRSRGTDTREPSPGSHSALPGKKTALQA  
 ALLETLDLVDRSWGGRSLHSNEAFLAQARHILSSVEEFTAAQDSSAMVGEDVGSALLESKSLQSRLAE  
 QQQGHAREMSEVTAEHLHHTKELDDLRLQHLDKSLEENSRLKSLLSMKKEYKSADTAATLNLQIAGLQTS  
 VKRLCGEIVELKQHLEHYDKIQELTQMLQESHSSLVSTNEHLLQELSQVRAQHRAEVEQMHSYQELKKT  
 MALFPSSASHGGCQAC

**TRTRPLE** – GFP Tag – V

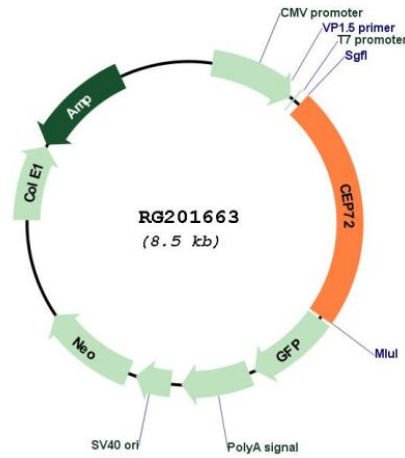
Restriction Sites: SgfI-MluI

Cloning Scheme:

Cloning sites used for ORF Shutting:



Plasmid Map:



ACCN: NM\_018140

ORF Size: 1941 bp

<b>OTI Disclaimer:</b>	The molecular sequence of this clone aligns with the gene accession number as a point of reference only. However, individual transcript sequences of the same gene can differ through naturally occurring variations (e.g. polymorphisms), each with its own valid existence. This clone is substantially in agreement with the reference, but a complete review of all prevailing variants is recommended prior to use. <a href="#">More info</a>
<b>OTI Annotation:</b>	This clone was engineered to express the complete ORF with an expression tag. Expression varies depending on the nature of the gene.
<b>Components:</b>	The ORF clone is ion-exchange column purified and shipped in a 2D barcoded Matrix tube containing 10ug of transfection-ready, dried plasmid DNA (reconstitute with 100 ul of water).
<b>Reconstitution Method:</b>	<ol style="list-style-type: none"><li>1. Centrifuge at 5,000xg for 5min.</li><li>2. Carefully open the tube and add 100ul of sterile water to dissolve the DNA.</li><li>3. Close the tube and incubate for 10 minutes at room temperature.</li><li>4. Briefly vortex the tube and then do a quick spin (less than 5000xg) to concentrate the liquid at the bottom.</li><li>5. Store the suspended plasmid at -20°C. The DNA is stable for at least one year from date of shipping when stored at -20°C.</li></ol>
<b>RefSeq:</b>	<a href="#">NM_018140.4</a>
<b>RefSeq Size:</b>	2427 bp
<b>RefSeq ORF:</b>	1944 bp
<b>Locus ID:</b>	55722
<b>UniProt ID:</b>	<a href="#">Q9P209</a>
<b>Cytogenetics:</b>	5p15.33
<b>Gene Summary:</b>	The product of this gene is a member of the leucine-rich-repeat (LRR) superfamily of proteins. The protein is localized to the centrosome, a non-membraneous organelle that functions as the major microtubule-organizing center in animal cells. [provided by RefSeq, Jul 2008]