

## Product datasheet for **RG201660**

### POGLUT2 (NM\_024089) Human Tagged ORF Clone

#### Product data:

Product Type:	Expression Plasmids
Product Name:	POGLUT2 (NM_024089) Human Tagged ORF Clone
Tag:	TurboGFP
Symbol:	POGLUT2
Synonyms:	EP58; ERp58; KDEL1; KDELC1
Mammalian Cell Selection:	Neomycin
Vector:	pCMV6-AC-GFP (PS100010)
E. coli Selection:	Ampicillin (100 ug/mL)



[View online »](#)

**ORF Nucleotide Sequence:**

>RG201660 representing NM\_024089  
 Red=Cloning site Blue=ORF Green=Tags(s)

TTTTGTAATACGACTCACTATAGGGCGGCCGGAATTCGTCGACTGGATCCGGTACCGAGGAGATCTGCC  
 GCC**CGGATCGCC**

ATGTTTGGCACTTTGCTACTTTATTGCTCTTTCTGGCGACAGTTCAGCACTCGCCGAGACCGGGGAG  
 AAAGGCAGCTGAGCCCGAGAAGAGCGAAATATGGGGACCGGGCTAAAAGCAGACGTCGTCCTTCCCGC  
 CCGCTATTTCTATATTCAGGCAGTGGATACATCAGGGAATAAATTCACATCTTCTCCAGGCGAAAAGGTC  
 TTCCAGGTGAAAGTCTCAGCACCAGAGGAGCAATTCAGTGGAGTGGAGTCCAGGTTTTAGACCGAAAAG  
 ATGGGTCCTTCATAGTAAGATACAGAATGTATGCAAGCTACAAAAATCTGAAGGTGGAAGTTAAATTC  
 AGGGCAACATGTGGCCAAATCCCATATATTTAAAAGGGCCGGTTTACCATGAGAACTGTGACTGTCT  
 CTGCAAGATAGTGCAGCCTGGCTACGGGAGATGAACTGCCCTGAAACCATTGCTCAGATTCAGAGAGATC  
 TGGCACATTTCCCTGCTGTGGATCCAGAAAAGATTGCAGTAGAAATCCAAAAAGATTTGGACAGAGGCA  
 GAGCCTATGTCACTACACCTTAAAGGATAACAAGTTTATATCAAGACTCATGGTGAACATGTAGGTTTT  
 AGAATTTTCATGGATGCCATACTACTTTCTTTGACTAGAAAGGTGAAGATGCCAGATGTGGAGCTCTTTG  
 TTAATTTGGGAGACTGGCCTTTGAAAAAAGAAATCCAATTCAAACATCCATCCGATCTTTTCTGGTG  
 TGGCTCCACAGATTCGAAGGATATCGTGATGCCTACGTACGATTTGACTGATTCTGTTCTGGAAACCATG  
 GGCCGGTAAGTCTGGATATGATGTCCGTGCAAGCTAACACGGGTCTCCCTGGGAAAGCAAAAATTC  
 CTGCCGCTGGAGAGGGCGAGACAGCCGAAAGAGAGACTCGAGCTGGTTAAACTCAGTAGAAAACACCC  
 AGAACTCATAGACGCTGCTTTCACCAACTTTTCTTTAAACAGATGAAAACCTGTATGGTCCCATT  
 GTGAAACATATTTCAATTTTGTATTCTCAAGCATAAGTATCAAATAAATATCGATGCCACTGTAGCAG  
 CTTATCGCCTGCCATATTTGCTAGTTGGTGACAGTGTGTGCTGAAGCAGGATTCATCTACTATGAACA  
 TTTTACAAATGAGCTGCAGCCCTGAAACACTACATTCCAGTTAAGAGCAACCTGAGCGATCTGCTAGAA  
 AAATTAATGGGCGAAAAGATCACGATGAAGAGGCCAAAAAGATAGCAAAAGCAGGACAAGAATTTGCAA  
 GAAATAATCTCATGGGCGATGACATATTCTGTTATTATTTCAAACCTTTCCAGGAATATGCCAATTTACA  
 AGTGAGTGAGCCCAATCCGAGAGGGCATGAAAAGGTAGAACCACAGACTGAGGACGACCTCTCCCT  
 TGTACTTGCCATAGAAAAAGACCAAAGATGAAGCT

**ACGCGTACGCGGCCGCTCGAG** – GFP Tag – GTTTAA

**Protein Sequence:**

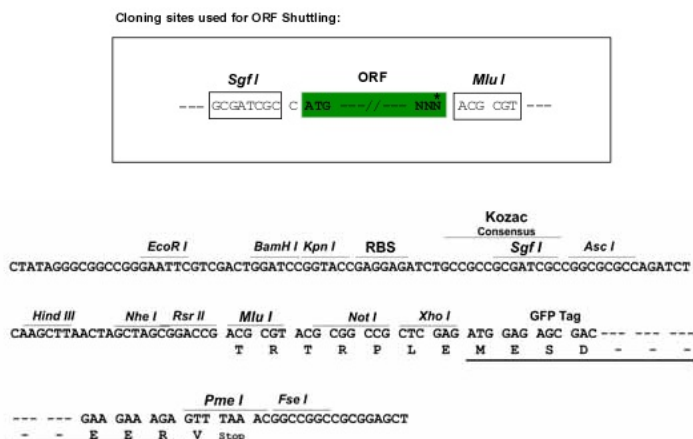
>RG201660 representing NM\_024089  
 Red=Cloning site Green=Tags(s)

MFGTLLLYCFFLATVPALAEETGGERQLSPEKSEIWGPGLKADVVLPARYFYIQAVDTSNGKFTSSPGEKV  
 FQVKVSAPEEQFTRVGVQVLDKRDGSFIVRYRMYASYKNLKVVEKFKGQHVAKSPYILKGPVYHENCDCP  
 LQDSAAWLREMNCPETIAQIQRDLAHFPAVDPEKIAVEIPKRFQQRSLCHYTLKDNKVYIKTHGEHVGF  
 RIFMDAILLSLTKVKMPDVELFVNLGDWPLEKKKSNSNIHPIFSWCGSTDSKDIVMPTYDLTDSVLETM  
 GRVSLDMMSVQANTGPPWESKNSTAVWRGRDSRKRLELVKLSRKHPELIDAAFTNFFFFKHDENLYGPI  
 VKHISFFDFFKHKYQINIDGTVAAYRPLPYLLVGDSVVLKQDSIYYEHFYNELQPWKHYIPVKNLSDLLE  
 KLKWKADHDEEAKKIAKAGQEFARNNLMGDDIFCYFFKLFQEYANLQVSEPPQIREGMKRVEPQTEDDLFP  
 CTCHRKTKDEL

**TRTRPLE** – GFP Tag – V

**Restriction Sites:**

Sgfl-Mlul

**Cloning Scheme:**


**ACCN:** NM\_024089

**ORF Size:** 1506 bp

**OTI Disclaimer:** The molecular sequence of this clone aligns with the gene accession number as a point of reference only. However, individual transcript sequences of the same gene can differ through naturally occurring variations (e.g. polymorphisms), each with its own valid existence. This clone is substantially in agreement with the reference, but a complete review of all prevailing variants is recommended prior to use. [More info](#)

**OTI Annotation:** This clone was engineered to express the complete ORF with an expression tag. Expression varies depending on the nature of the gene.

**Components:** The ORF clone is ion-exchange column purified and shipped in a 2D barcoded Matrix tube containing 10ug of transfection-ready, dried plasmid DNA (reconstitute with 100 ul of water).

**Reconstitution Method:**

1. Centrifuge at 5,000xg for 5min.
2. Carefully open the tube and add 100ul of sterile water to dissolve the DNA.
3. Close the tube and incubate for 10 minutes at room temperature.
4. Briefly vortex the tube and then do a quick spin (less than 5000xg) to concentrate the liquid at the bottom.
5. Store the suspended plasmid at -20°C. The DNA is stable for at least one year from date of shipping when stored at -20°C.

**RefSeq:** [NM\\_024089.1](#), [NP\\_076994.1](#)

**RefSeq Size:** 2082 bp

**RefSeq ORF:** 1509 bp

**Locus ID:** 79070

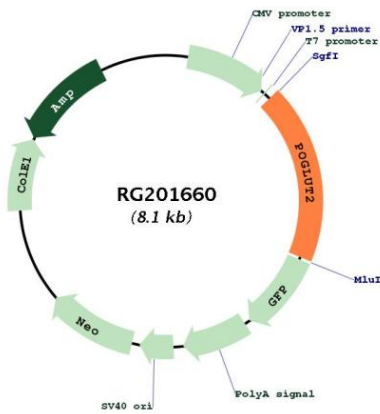
**UniProt ID:** [Q6UW63](#)

**Cytogenetics:** 13q33.1

**Domains:** Filamin, CAP10

**Gene Summary:** This gene encodes a protein product localized to the lumen of the endoplasmic reticulum. As a member of the endoplasmic reticulum protein family the encoded protein contains a Lys-Asp-Glu-Leu or KDEL motif located at the extreme C-terminus which prevents all endoplasmic reticulum resident proteins from being secreted. Proteins carrying this motif are bound by a receptor in the Golgi apparatus so that the receptor-ligand complex returns to the endoplasmic reticulum. A processed non-transcribed pseudogene located in an intron of a sodium transporter gene on chromosome 5 has been defined for this gene. This gene has multiple transcript variants which are predicted to encode distinct isoforms. [provided by RefSeq, Jan 2016]

**Product images:**



Circular map for RG201660