

## Product datasheet for **RG201621**

### **SNX2 (NM\_003100) Human Tagged ORF Clone**

#### **Product data:**

Product Type:	Expression Plasmids
Product Name:	SNX2 (NM_003100) Human Tagged ORF Clone
Tag:	TurboGFP
Symbol:	SNX2
Synonyms:	TRG-9
Mammalian Cell Selection:	Neomycin
Vector:	pCMV6-AC-GFP (PS100010)
E. coli Selection:	Ampicillin (100 ug/mL)



[View online »](#)

**ORF Nucleotide Sequence:**

>RG201621 representing NM\_003100  
 Red=Cloning site Blue=ORF Green=Tags(s)

TTTTGTAATACGACTCACTATAGGGCGGCCGGGAATTCGTCGACTGGATCCGGTACCGAGGAGATCTGCC  
 GCC**CGGATCGCC**

ATGGCGGCCGAGAGGGAACCTCCTCCGCTGGGGACGGGAAGCCACCGACTTTGAGGATCTGGAGGACG  
 GAGAGGACCTGTTCAACGACTGTCTCCACCCTAGAGTCAAGTCCATCATCTCCAGAACCAGCTAGTCT  
 TCCTGCAGAAGATATTAGTGCAAACTCCAATGGCCAAAAACCCACAGAAGTTGTATTAGATGATGACAGA  
 GAAGATCTTTTTGCAGAAGCCACAGAAGAAGTTTCTTTGGACAGCCCTGAAAGGGAACCTATCCTATCCT  
 CGGAACCTTCTCCTGCAGTACACCTGTCACTCTACTACACTCATTGCTCCTAGAATTGAATCAAAGAG  
 TATGTCTGCTCCCGTGTCTTTGATAGATCCAGGGAAGAGATTGAAGAAGAAGCAATGGAGACATTTTT  
 GACATAGAAATTTGGTGTATCAGATCCAGAAAAAGTTGGTATGGCATGAATGCCTATATGGCATATAGAG  
 TAACAACAAGACATCTCTTCCATGTTTCAAGTGAAGTGAATTTTCAAGTAAAAGAAGATTACAGCGACTT  
 TCTTGGTTTGCACAGCAAATTAGCAAGCAAATATTTACATGTTGGTTATATTGTGCCACCAGCTCCAGAA  
 AAGAGTATAGTAGGGATGACCAAGGTCAAAGTGGGTAAAGAAGACTCATCATCCACTGAGTTTGTAGAAA  
 AACGGAGAGCAGCTCTTCAAAGGTATCTTCAAAGAACAGTAAAACATCCAACTTTACTACAGGATCCTGA  
 TTTAAGGCAGTTCTTGGAAAGTTTCAAGAGCTGCCTAGAGCAGTTAATACACAGGCTCTGAGTGGAGCAGGA  
 ATATTGAGGATGGTGAACAAGGCTGCCGACGCTGTCAACAAAAATGACAATCAAGATGAATGAATCGGATG  
 CATGGTTTGAAGAAAAGCAGCAGCAATTTGAGAATCTGGATCAGCAACTTAGGAACTTCATGTCAGTGT  
 TGAAGCCTTGGTCTGTCATAGAAAAGAACTTTTCAAGCAACACAGCTGCCTTTGCTAAAAGTGTGCCATG  
 TTAGGTAATTCTGAGGATCACTGCTTTATCTAGAGCTTTGTCTCAGCTTGCAGAGTTGAGGAGAAGA  
 TAGACCAGTTACATCAAGAACAAGCTTTTGTGACTTTTTATATGTTTTTCAAGAACTACTTAGTGACTACAT  
 TCGTCTTATTGCTGCAGTGAAGGTGTGTTTGAACATCGAATGAAGTGTGGCAGAAATGGGAAGATGCT  
 CAAATTACTTTGCTCAAAAAACGTGAAGCTGAAGCAAAAAATGATGGTTGCTAACAAACCAGATAAAAATAC  
 AGCAAGCTAAAAATGAAATAAGAGAGTGGGAGGCGAAAAGTGAACAAGGGGAAAGAGATTTTGAACAGAT  
 ATCTAAAACGATTCGAAAAGAAGTGGGAAGATTTGAGAAAAGAACGAGTGAAGGATTTTAAAACCGTTATC  
 ATCAAGTACTTAGAATCACTAGTTCAAACACAACACAGCTGATAAAAATACTGGGAAGCATTCTACCTG  
 AAGCCAAAGCCATTGCC

**ACGCGTACGCGGCCGCTCGAG** – GFP Tag – GTTTAA

**Protein Sequence:**

>RG201621 representing NM\_003100  
 Red=Cloning site Green=Tags(s)

MAAEREPPPLGDGKPTDFELEDGEDLFTSTVSTLESSPSSPEPASLPAEDISANSNGPKPTEVVLDDDR  
 EDLFAEATEEVSLDSPEREPILESSEPAVTPVPTTLIAPRIESKMSAPVIFDRSREEIEEEANGDIF  
 DIEIGVSDPEKVGDMNAYMAYRVTTKTSLSMFSEFSVKKRFSDFLGLHSLKASKYLHVGYIVPPAPE  
 KSIVGMTKVKVKGEDSSSTEFVEKRRALERYLQRTVKHPTLLQDPDLRQFLESSELPRVNTQALSGAG  
 ILRMVNKAADAVNKMTIKMNESDAWFEEKQQQFENLDQQLRKLHVSVEALVCHRKELSANTAFAKSAAM  
 LGNSEDHTALSRALSQLAEVEEKIDQLHQEQAFADFYMFSELLSDYIRLIAAVKGVDFHRMKCWQKWEDA  
 QITLLKKREAEAKMMVANKPDKIQQAKNEIREWEAKVQQGERDFEQISKIRKEVGRFEKERVKDFKTVI  
 IKYLESLVQTQQQLIKYWEAFLPEAKAIA

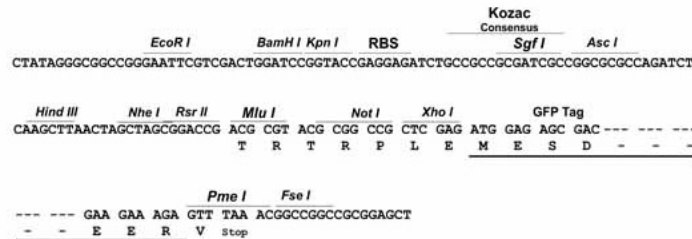
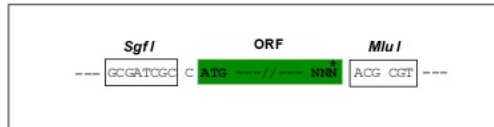
**TRTRPLE** – GFP Tag – V

**Restriction Sites:**

Sgfl-Mlul

**Cloning Scheme:**

Cloning sites used for ORF Shutting:


**ACCN:** NM\_003100

**ORF Size:** 1557 bp

**OTI Disclaimer:** The molecular sequence of this clone aligns with the gene accession number as a point of reference only. However, individual transcript sequences of the same gene can differ through naturally occurring variations (e.g. polymorphisms), each with its own valid existence. This clone is substantially in agreement with the reference, but a complete review of all prevailing variants is recommended prior to use. [More info](#)
**OTI Annotation:** This clone was engineered to express the complete ORF with an expression tag. Expression varies depending on the nature of the gene.

**Components:** The ORF clone is ion-exchange column purified and shipped in a 2D barcoded Matrix tube containing 10ug of transfection-ready, dried plasmid DNA (reconstitute with 100 ul of water).

**Reconstitution Method:**

1. Centrifuge at 5,000xg for 5min.
2. Carefully open the tube and add 100ul of sterile water to dissolve the DNA.
3. Close the tube and incubate for 10 minutes at room temperature.
4. Briefly vortex the tube and then do a quick spin (less than 5000xg) to concentrate the liquid at the bottom.
5. Store the suspended plasmid at -20°C. The DNA is stable for at least one year from date of shipping when stored at -20°C.

**RefSeq:** [NM\\_003100.4](#)
**RefSeq Size:** 2091 bp

**RefSeq ORF:** 1560 bp

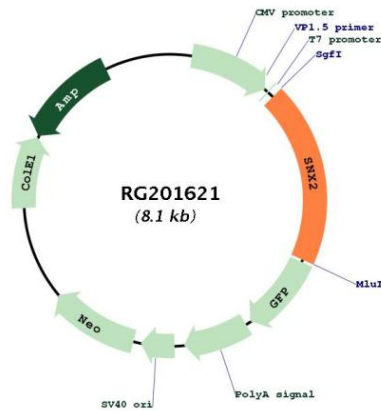
**Locus ID:** 6643

**UniProt ID:** [O60749](#)
**Cytogenetics:** 5q23.2

**Domains:** PX, Sorting\_nexin

**Gene Summary:** This gene belongs to the sorting nexin family whose members contain the phosphoinositide-binding phox (PX) domain. The encoded protein is a component of the retromer complex which plays a role in protein sorting in the endocytic pathway. This protein may form oligomeric complexes with other family members. Alternate splicing results in multiple transcript variants of this gene. Pseudogenes associated with this gene are located on chromosomes 1 and 7. [provided by RefSeq, May 2013]

**Product images:**



Circular map for RG201621