

Product datasheet for **RG201608**

FKBP2 (NM_057092) Human Tagged ORF Clone

Product data:

Product Type: Expression Plasmids
Product Name: FKBP2 (NM_057092) Human Tagged ORF Clone
Tag: TurboGFP
Symbol: FKBP2
Synonyms: FKBP-13; FKBP13; PPlase
Mammalian Cell Selection: Neomycin
Vector: pCMV6-AC-GFP (PS100010)
E. coli Selection: Ampicillin (100 ug/mL)
ORF Nucleotide Sequence: >RG201608 representing NM_057092
 Red=Cloning site Blue=ORF Green=Tags(s)

TTTTGTAATACGACTCACTATAGGGCGGCCGGAATTCGTCGACTGGATCCGGTACCGAGGAGATCTGCC
 GCC**CGATCGCC**

ATGAGGCTGAGCTGGTTCGGGTCCTGACAGTACTGTCCATCTGCCTGAGCGCCGTGGCCACGGCCACGG
 GGGCCGAGGGCAAAGGAAGCTGCAGATCGGGTCAAGAAGCGGGTGGACCACTGTCCCATCAAATCGCG
 CAAAGGGGATGTCCTGCACATGCACTACACGGGAAGCTGGAAGATGGGACAGAGTTTGACAGCAGCCTG
 CCCCAGAACAGCCCTTTGTCTTCTCCCTTGGCACAGGCCAGGTCATCAAGGGCTGGGACCAGGGGCTGC
 TGGGGATGTGTGAGGGGAAAAGCGCAAGCTGGTATCCCATCCGAGCTAGGGTATGGAGAGCGGGGAGC
 TCCCCAAAGATTCCAGGCGGTGCAACCTGGTGTTCGAGGTGGAGCTGCTCAAATAGAGCGACGAAC
 T GAGCTG

ACGCGTACGCGGCCGCTCGAG - GFP Tag - GTTTAA

Protein Sequence: >RG201608 representing NM_057092
 Red=Cloning site Green=Tags(s)

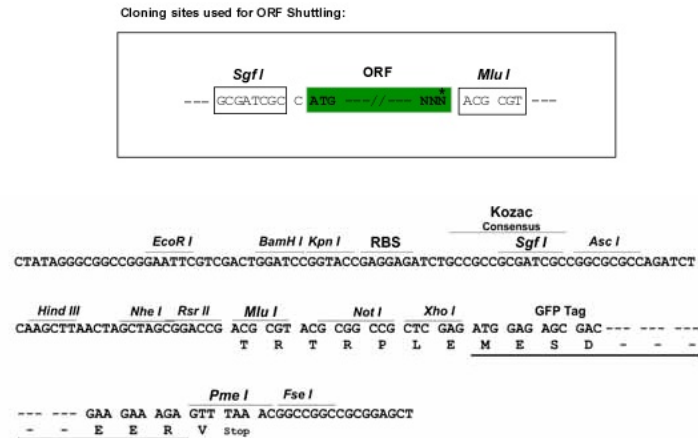
MRLSWFRVLTVLSICLSAVATATGAEGKRKLQIGVKKRVDHCPIKSRKGDVLMHYTGKLEDGTEFDSSL
 PQNQPFVFSLGTGQVIKQWDQGLLMCEGEKRKLVIPSELGYGERGAPPKIPGGATLVFEVELLKIERRT
 EL

TRTRPLE - GFP Tag - V

Restriction Sites: SgfI-MluI



[View online »](#)

Cloning Scheme:


ACCN: NM_057092

ORF Size: 426 bp

OTI Disclaimer: The molecular sequence of this clone aligns with the gene accession number as a point of reference only. However, individual transcript sequences of the same gene can differ through naturally occurring variations (e.g. polymorphisms), each with its own valid existence. This clone is substantially in agreement with the reference, but a complete review of all prevailing variants is recommended prior to use. [More info](#)

OTI Annotation: This clone was engineered to express the complete ORF with an expression tag. Expression varies depending on the nature of the gene.

Components: The ORF clone is ion-exchange column purified and shipped in a 2D barcoded Matrix tube containing 10ug of transfection-ready, dried plasmid DNA (reconstitute with 100 ul of water).

Reconstitution Method:

1. Centrifuge at 5,000xg for 5min.
2. Carefully open the tube and add 100ul of sterile water to dissolve the DNA.
3. Close the tube and incubate for 10 minutes at room temperature.
4. Briefly vortex the tube and then do a quick spin (less than 5000xg) to concentrate the liquid at the bottom.
5. Store the suspended plasmid at -20°C. The DNA is stable for at least one year from date of shipping when stored at -20°C.

Note: Plasmids are not sterile. For experiments where strict sterility is required, filtration with 0.22um filter is required.

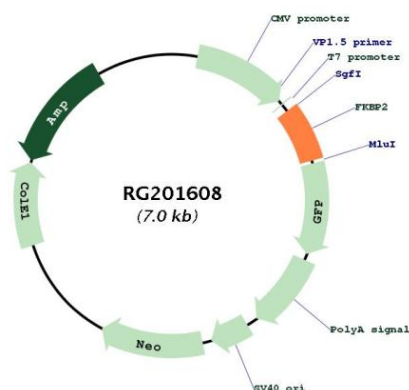
RefSeq: [NM_057092.2](#)

RefSeq Size: 714 bp

RefSeq ORF: 429 bp

Locus ID:	2286
UniProt ID:	P26885
Cytogenetics:	11q13.1
Domains:	FKBP
Protein Families:	Druggable Genome
Gene Summary:	The protein encoded by this gene is a member of the immunophilin protein family, which play a role in immunoregulation and basic cellular processes involving protein folding and trafficking. This encoded protein is a cis-trans prolyl isomerase that binds the immunosuppressants FK506 and rapamycin. It is thought to function as an ER chaperone and may also act as a component of membrane cytoskeletal scaffolds. Multiple alternatively spliced variants, encoding the same protein, have been identified. [provided by RefSeq, Sep 2008]

Product images:



Circular map for RG201608