

Product datasheet for **RG201535**

SGK1 (NM_005627) Human Tagged ORF Clone

Product data:

Product Type:	Expression Plasmids
Product Name:	SGK1 (NM_005627) Human Tagged ORF Clone
Tag:	TurboGFP
Symbol:	SGK1
Synonyms:	SGK
Mammalian Cell Selection:	Neomycin
Vector:	pCMV6-AC-GFP (PS100010)
E. coli Selection:	Ampicillin (100 ug/mL)
ORF Nucleotide Sequence:	>RG201535 representing NM_005627 Red=Cloning site Blue=ORF Green=Tags(s)

TTTTGTAATACGACTCACTATAGGGCGGCCGGAATTCGTCGACTGGATCCGGTACCGAGGAGATCTGCC
GCC**CGATCGCC**

ATGACGGTGAAAACACTGAGGCTGCTAAGGGCACCCCTCACTTACTCCAGGATGAGGGGCATGGTGGCAATTC
TCATCGCTTTCATGAAGCAGAGGAGGATGGGTCTGAACGACTTTATTCAGAAGATTGCCAATAACTCCTA
TGCATGCAAACACCCTGAAGTTCAGTCCATCTTGAAGATCTCCCAACCTCAGGAGCCTGAGCTTATGAAT
GCCAACCTTCTCCTCCACCAAGTCTTCTCAGCAAATCAACCTTGGCCCGTCGTCGAATCCTCATGCTA
AACCATCTGACTTTCACTTCTTGAAGTATCGGAAAGGGCAGTTTTGGAAAGGTTCTTCTAGCAAGACA
CAAGGCAGAAGAAGTGTCTATGCAAGTCAAAGTTTTACAGAAGAAAGCAATCCTGAAAAAGAAAGAGGAG
AAGCATATTATGTCGGAGCGGAATGTTCTGTTGAAGAATGTGAAGCACCCCTTCTGGTGGGCTTCACT
TCTCTTCCAGACTGCTGACAAATTGACTTTGTCTAGACTACATTAATGGTGGAGAGTTGTTCTACCA
TCTCCAGAGGGAACGCTGCTTCTGGAACCACGGGCTCGTTTCTATGCTGCTGAAATAGCCAGTGCCTTG
GGCTACCTGCATTCACTGAACATCGTTTATAGAGACTTAAACCAGAGAATATTTTGCTAGATTCACAGG
GACACATTGTCTTACTGACTTCGGACTCTGCAAGGAGAACATTGAACACAACAGCACACATCCACCTT
CTGTGGCAGCCCGGAGTATCTCGCACCTGAGGTGCTTATAAGCAGCCTTATGACAGGACTGTGGACTGG
TGGTGCCTGGGAGCTGTCTTGTATGAGATGCTGTATGGCCTCGCCCTTTTTATAGCCGAAACACAGCTG
AAATGTACGACAACATTCTGAACAAGCCTCTCCAGCTGAAACCAATATTACAAATTCGCAAGACACCT
CCTGGAGGGCCTCCTGCAGAAGGACAGGACAAAGCGGCTCGGGGCAAGGATGACTTCATGGAGATTAAG
AGTCATGTCTTCTCCTTAATTAAGTGGATGATCTCATTAAAGAAGATTACTCCCCCTTTTAACC
CAAATGTGAGTGGGCCAACGACCTACGGCACTTTGACCCGAGTTTACCGAAGAGCCTGTCCCAACTC
CATTGGCAAGTCCCCTGACAGGCTCCTCGTCACAGCCAGCGTCAAGGAAGCTGCCGAGGCTTCTAGGC
TTTTCTATGCGCCTCCACGGACTCTTCTCT

ACGCGTACGCGGCCGCTCGAG - GFP Tag - GTTTAA



[View online »](#)

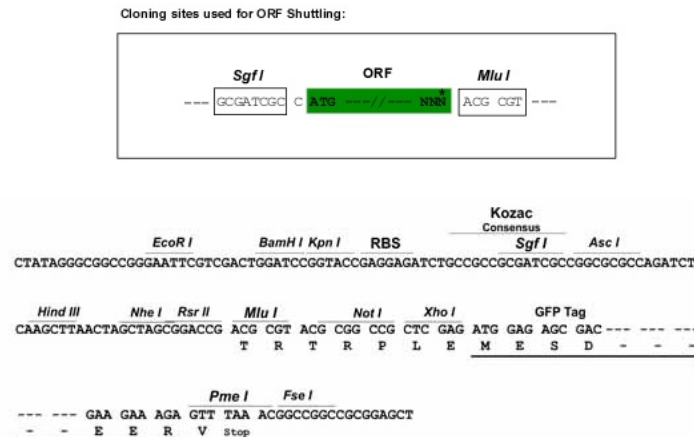
Protein Sequence: >RG201535 representing NM_005627
 Red=Cloning site Green=Tags(s)

MTVKTEAAKGLTYSRMRGMVAIIAIFMKQRRMGLNDFIQKIANNYACKHPEVQSILKISQPQPELMN
 ANPSPPPSPSQINLGPSSNPFAKPSDFHFLKVIKGSFGKVLARHKAEEVFYAVKVLQKAILKKKEE
 KHMISERNVLLKNVKNPFLVGLHFSFQTADKLYFVLDYINGGELFYHLQRERCFLEPRARFYAAEIASAL
 GYLHSLNIVYRDLKPENILLDSQGHIVL TDFGLCKENIEHNSTTFCGTPEYLAPEVLHKQPYDRTVDW
 WCLGAVLYEMLYGLPPFYSRNTAEMYDNILNKPLQLKPNITNSARHLLLEGLLQKDRTKRLGAKDDFMEIK
 SHVFFSLINWDDLINKKITPPFNPVSGPNDLRHFDPEFTEEPVNSIGKSPDSVLVTASVKEAAEAFLG
 FSYAPPTDSFL

TRTRPLE - GFP Tag - V

Restriction Sites: SgfI-MluI

Cloning Scheme:



ACCN: NM_005627

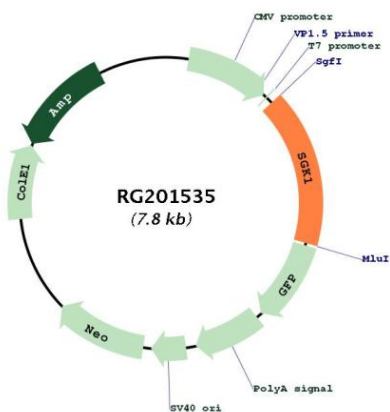
ORF Size: 1293 bp

OTI Disclaimer: Due to the inherent nature of this plasmid, standard methods to replicate additional amounts of DNA in E. coli are highly likely to result in mutations and/or rearrangements. Therefore, OriGene does not guarantee the capability to replicate this plasmid DNA. Additional amounts of DNA can be purchased from OriGene with batch-specific, full-sequence verification at a reduced cost. Please contact our customer care team at custsupport@origene.com or by calling 301.340.3188 option 3 for pricing and delivery.

The molecular sequence of this clone aligns with the gene accession number as a point of reference only. However, individual transcript sequences of the same gene can differ through naturally occurring variations (e.g. polymorphisms), each with its own valid existence. This clone is substantially in agreement with the reference, but a complete review of all prevailing variants is recommended prior to use. [More info](#)

OTI Annotation:	This clone was engineered to express the complete ORF with an expression tag. Expression varies depending on the nature of the gene.
Components:	The ORF clone is ion-exchange column purified and shipped in a 2D barcoded Matrix tube containing 10ug of transfection-ready, dried plasmid DNA (reconstitute with 100 ul of water).
Reconstitution Method:	<ol style="list-style-type: none">1. Centrifuge at 5,000xg for 5min.2. Carefully open the tube and add 100ul of sterile water to dissolve the DNA.3. Close the tube and incubate for 10 minutes at room temperature.4. Briefly vortex the tube and then do a quick spin (less than 5000xg) to concentrate the liquid at the bottom.5. Store the suspended plasmid at -20°C. The DNA is stable for at least one year from date of shipping when stored at -20°C.
RefSeq:	NM_005627.4
RefSeq Size:	2386 bp
RefSeq ORF:	1296 bp
Locus ID:	6446
UniProt ID:	O00141
Cytogenetics:	6q23.2
Domains:	pkinase, S_TK_X, TyrKc, S_TKc
Protein Families:	Druggable Genome, Protein Kinase
Gene Summary:	This gene encodes a serine/threonine protein kinase that plays an important role in cellular stress response. This kinase activates certain potassium, sodium, and chloride channels, suggesting an involvement in the regulation of processes such as cell survival, neuronal excitability, and renal sodium excretion. High levels of expression of this gene may contribute to conditions such as hypertension and diabetic nephropathy. Several alternatively spliced transcript variants encoding different isoforms have been noted for this gene. [provided by RefSeq, Jan 2009]

Product images:



Circular map for RG201535