

Product datasheet for **RG201521**

GLMN (NM_053274) Human Tagged ORF Clone

Product data:

Product Type:	Expression Plasmids
Product Name:	GLMN (NM_053274) Human Tagged ORF Clone
Tag:	TurboGFP
Symbol:	GLMN
Synonyms:	FAP; FAP48; FAP68; FKBPAP; GLML; GVM; VMGLOM
Mammalian Cell Selection:	Neomycin
Vector:	pCMV6-AC-GFP (PS100010)
E. coli Selection:	Ampicillin (100 ug/mL)



[View online »](#)

ORF Nucleotide Sequence:

>RG201521 representing NM_053274
 Red=Cloning site Blue=ORF Green=Tags(s)

TTTTGTAATACGACTCACTATAGGGCGGCCGGAATTCGTCGACTGGATCCGGTACCGAGGAGATCTGCC
 GCC**CGGATCGCC**

ATGGCTGTAGAGGAACCTCAGTCTATAATAAAGAGATGTCAAATCTAGAAGAGCAAGACTTTAAAGAAG
 AGGATTTTGGCCTATTTAGTTAGCTGGCAAAGATGCATAGAAGAAGGGCACACAGACCAGCTATTAGA
 AATTATCAAAATGAAAAGAATAAGGTCATCATCAAGAATATGGGCTGGAATCTCGTTGGTCTGTGT
 CGATGCCTTTTGTGTAAGATAAAGAGGATAGTAAAAGAAAAGTTATTTTTTGATCTTTGATTTATTGG
 TAAAGTTATGCAATCAAAGGAATTATTGTTGGGTTTGGCTTGAAGTATTGAAGAGCCCTCTGAAAAACA
 GATATCCCAAAGTATTCTTTTGGCTTACGCCATTACAAACAGTGATTCAGAAACTTCATAACAAGGCA
 TATTCAATTGGATTAGCATTGTCTACCCCTTGAATCAGCTATCTCTTCTCCTGTTCCATACTCAAAG
 AACAAATACAAATGGATGACTATGGCCTTGTGTCAGTGTGCAAGGCCTTAATAGAGTTCCTAAGCCTTT
 TGTGGAAGAAGTCATTGATAACAAGAAAAGTCTACTGGAAAATGAAAAGTTAAAGGATGAATTACTGAAA
 TTTTGTTCAAAAGCTTGAATGCCCTTGTCTGACAGCACAATCTTTGAACAGTCTGAAGAAGGTGGAA
 ATGATCCTTTTCAAGTATTTGTCATCAGAAATAATAGGTTTTTATCAGCAATTGGACACCCTTTCCCAA
 AATGATTTTTAATCATGGAAGGAAAAAGAGAAGTGGAAATACCTTGAATTTGAAGAAGAAGAAAAATAAA
 CAGTTAGCAGACTCAATGGCTTCTCTGGCATACTAGTATTTGTACAGGGCATCCATATTGATCAGCTTC
 CAATGGTCTTAAGCCATTGTACCTTTTGCAGTTAATATGGGGCACATTGAAGTCTTTTTCGAAAGAAC
 AGAAGAGTCTGTTATCTCAAAGGATTGGAGCTGCTGGAGAATAGTTTATTGAGAATAGAAGACAATAGT
 CTACTTTACCAGTACTTAGAAAATCAAGAGTTTTCTACTGTACCTCAGGGCTTAGTAAAAGTAAATGACAC
 TTTGCCCATTTAGACACTGAGGAAAAAGAGTTTAGCTATGCTTACAGTGTATATTAACAAGTTGGATT
 ACAAGGCAAAATACATTATTTAGGTGCTTATTGAATACAAGTAATCACTCAGGTGTGGAGGCTTTTATT
 ATTCAAAATATCAAAAATCAAATGACATGTCATTAAGAGAACACGTAACAACAATGGTTTACAGGAC
 CACAGTTGATTTCCCTTCTGATTTGGTACTTTTTCTCCAGAGGGTGCAGAAACAGATTTACTGAAAA
 CTCAGATAGGATTATGGCTTCATTAATTTATTGAGGATTTGGTTATCAAAGATAATGAAAATGACAA
 CAACTGGATTATGGACAGAAGTGGAAATATTGAGAATAATTTCTTAAAGCCACTTCATATAGGACTTA
 ATATGTCAAAGCACATTATGAAGCAGAAATAAAAATAGCCAAGAGGCCAGAAATCTAAAGATCTTTG
 TTCTATAACTGTAAGTGGAGAAGAGATCCCTAATATGCCTCCTGAAATGCAGCTTAAAGTCTGCATTCA
 GCTCTTTTACATTTGATTTGATTGAAAGTGTCTAGCTCGAGTGAAGAAGTCAATGAAATAAAAAACA
 AGTCTACCTCTGAAGAAAATATTGGGATAAAG

ACGCGTACGCGGCCGCTCGAG - GFP Tag - GTTTAA

Protein Sequence:

>RG201521 representing NM_053274
 Red=Cloning site Green=Tags(s)

MAVEELQSIIKRCQILEEQDFKEEDFGLFQLAGQRCIEEGHTDQLEI IQNEKNKVIKNGWNLVGPV
 RCLLCKDKEDSKRKVYFLIFDLLVKLCNPKELLGLLELIEEPSGKQISQSILLLLQPLQTVIQKLHNKA
 YSIGLALSTLWNQLSLLPVPYSKEQIQMDDYGLCQCKALIEFTKPFVEEVIDNKENLENEKLDKDELLK
 FCFKSLKCPLLTAQFFEQSEEGNDPFRYFASEIIGFLSAIGHPPFKMIFNHGRKKRTWNYLEFEEENK
 QLADSMASLAYLVFVQGIHIDQLPMLV SPLYLLQFNMGHIEVFLQRTEESVISKGLELLENLLRIEDNS
 LLYQYLEIKSFLTVPQGLVKVMTLCPIETLRKKS LAMLQLYINKLDSQGYTLFRCLLNTSNHSGVEAFI
 IQNIKNQIDMSLRTRNNKWF TGPQLISLLDLVFLPEGAETDLLQNSDRIMASLNLLRYLVIKDNENDN
 QTGLWTELGNIENFLKPLHIGLNMSKAHYEAEIKNSQEAQKSKDLCSITVSGEEIPNMPPEMQLKVLHS
 ALFTFDLIESVLARVEELIEIKTKSTSEENIGIK

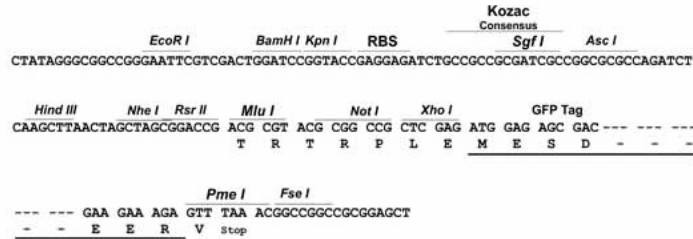
TRTRPLE - GFP Tag - V

Restriction Sites:

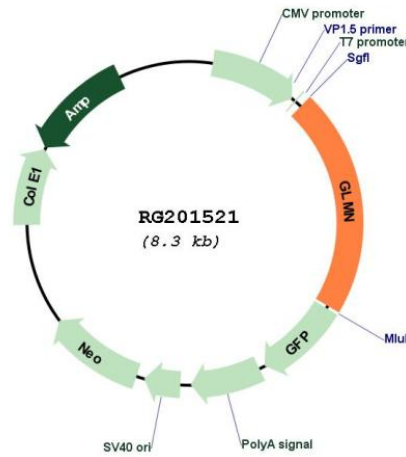
Sgfl-MluI

Cloning Scheme:

Cloning sites used for ORF Shutting:



Plasmid Map:



ACCN: NM_053274

ORF Size: 1782 bp

OTI Disclaimer:	The molecular sequence of this clone aligns with the gene accession number as a point of reference only. However, individual transcript sequences of the same gene can differ through naturally occurring variations (e.g. polymorphisms), each with its own valid existence. This clone is substantially in agreement with the reference, but a complete review of all prevailing variants is recommended prior to use. More info
OTI Annotation:	This clone was engineered to express the complete ORF with an expression tag. Expression varies depending on the nature of the gene.
Components:	The ORF clone is ion-exchange column purified and shipped in a 2D barcoded Matrix tube containing 10ug of transfection-ready, dried plasmid DNA (reconstitute with 100 ul of water).
Reconstitution Method:	<ol style="list-style-type: none">1. Centrifuge at 5,000xg for 5min.2. Carefully open the tube and add 100ul of sterile water to dissolve the DNA.3. Close the tube and incubate for 10 minutes at room temperature.4. Briefly vortex the tube and then do a quick spin (less than 5000xg) to concentrate the liquid at the bottom.5. Store the suspended plasmid at -20°C. The DNA is stable for at least one year from date of shipping when stored at -20°C.
RefSeq:	NM_053274.3
RefSeq Size:	2042 bp
RefSeq ORF:	1785 bp
Locus ID:	11146
UniProt ID:	Q92990
Cytogenetics:	1p22.1
Protein Families:	Druggable Genome
Gene Summary:	This gene encodes a phosphorylated protein that is a member of a Skp1-Cullin-F-box-like complex. The protein is essential for normal development of the vasculature and mutations in this gene have been associated with glomuvenous malformations, also called glomangiomas. Multiple splice variants encoding different isoforms have been found for this gene. [provided by RefSeq, Feb 2016]