

## Product datasheet for **RG201510**

### **NXT1 (NM\_013248) Human Tagged ORF Clone**

#### Product data:

**Product Type:** Expression Plasmids  
**Product Name:** NXT1 (NM\_013248) Human Tagged ORF Clone  
**Tag:** TurboGFP  
**Symbol:** NXT1  
**Synonyms:** MTR2; P15  
**Mammalian Cell Selection:** Neomycin  
**Vector:** pCMV6-AC-GFP (PS100010)  
**E. coli Selection:** Ampicillin (100 ug/mL)  
**ORF Nucleotide Sequence:** >RG201510 representing NM\_013248  
Red=Cloning site Blue=ORF Green=Tags(s)

TTTGTAAATACGACTCACTATAGGGCGGCCGGAATTCGTCGACTGGATCCGGTACCGAGGAGATCTGCC  
 GCCCGATCGCC

ATGGCATCTGTGGATTTCAAGACCTATGTGGATCAGGCCTGCAGAGCTGCTGAGGAGTTTGTCAATGTCT  
ACTACACCACCATGGATAAGCGGCGCGTTTGTGTCCCGCCTGTACATGGGCACAGCCACCCTGGTCTG  
GAATGGCAATGCTGTTTCAGGACAAGAATCCTTGAGTGAGTTTTTGAATGTTGCCTTCACGCGAGTTC  
CAAATCAGCGTGGTAGACTGCCAGCCTGTTTCATGATGAAGCCACACCAAGCCAGACCACGGTCCTTGTTG  
TCATCTGTGGATCAGTGAAGTTTGAGGGGAACAAACACGGGACTTCAACCAGAACTTCATCCTGACCGC  
CCAGGCCTCACCAGCAACACAGTGTGGAAGATCGCAAGTGACTGCTCCGCTTCCAGGACTGGGCCAGC

ACGCGTACGCGGCCGCTCGAG - GFP Tag - GTTTAA

**Protein Sequence:** >RG201510 representing NM\_013248  
Red=Cloning site Green=Tags(s)

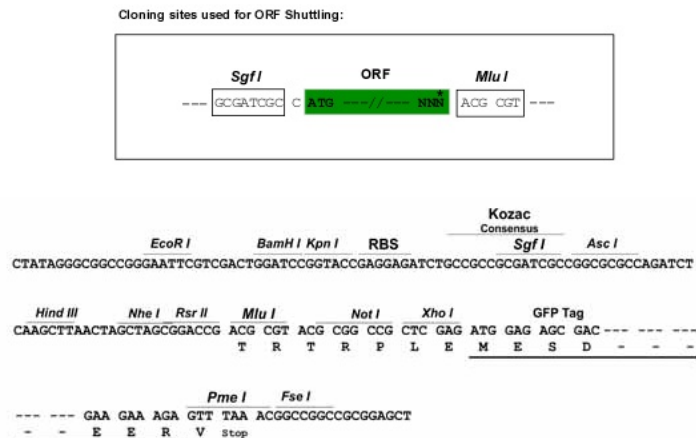
MASVDFKTYVDQACRAAEFVNYYTTMDKRRRLLSRLYMGATLVWNGNAVSGQESLSEFFEMLPSSSEF  
 QISVVDQCQPVHDEATPSQTTVLVVICGSVKFEGNKQRDFNQNFILTAQASPSNTVWKIASDCFRFQDWS

TRTRPLE - GFP Tag - V

**Restriction Sites:** SgfI-MluI



[View online »](#)

**Cloning Scheme:**


**ACCN:** NM\_013248

**ORF Size:** 420 bp

**OTI Disclaimer:** The molecular sequence of this clone aligns with the gene accession number as a point of reference only. However, individual transcript sequences of the same gene can differ through naturally occurring variations (e.g. polymorphisms), each with its own valid existence. This clone is substantially in agreement with the reference, but a complete review of all prevailing variants is recommended prior to use. [More info](#)

**OTI Annotation:** This clone was engineered to express the complete ORF with an expression tag. Expression varies depending on the nature of the gene.

**Components:** The ORF clone is ion-exchange column purified and shipped in a 2D barcoded Matrix tube containing 10ug of transfection-ready, dried plasmid DNA (reconstitute with 100 ul of water).

**Reconstitution Method:**

1. Centrifuge at 5,000xg for 5min.
2. Carefully open the tube and add 100ul of sterile water to dissolve the DNA.
3. Close the tube and incubate for 10 minutes at room temperature.
4. Briefly vortex the tube and then do a quick spin (less than 5000xg) to concentrate the liquid at the bottom.
5. Store the suspended plasmid at -20°C. The DNA is stable for at least one year from date of shipping when stored at -20°C.

**Note:** Plasmids are not sterile. For experiments where strict sterility is required, filtration with 0.22um filter is required.

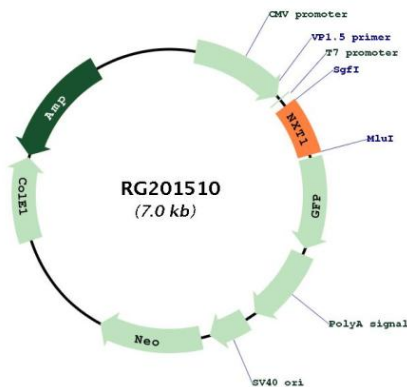
**RefSeq:** [NM\\_013248.3](#)

**RefSeq Size:** 1176 bp

RefSeq ORF: 423 bp  
 Locus ID: 29107  
 UniProt ID: [Q9UUK6](#)  
 Cytogenetics: 20p11.21  
 Domains: NTF2

**Gene Summary:** The protein encoded by this gene is located in the nuclear envelope. It has protein similarity to nuclear transport factor 2. This protein functions as a nuclear export factor in both RAN (Ras-related nuclear protein)- and CRM1 (required for chromosome region maintenance)-dependent pathways. It is found to stimulate the export of U1 snRNA in RAN- and CRM1-dependent pathways and the export of tRNA and mRNA in a CRM1-independent pathway. The encoded protein heterodimerizes with Tap protein and may regulate the ability of Tap protein to mediate nuclear mRNA export. The use of alternate polyadenylation sites has been found for this gene. [provided by RefSeq, Jul 2008]

## Product images:



Circular map for RG201510