

## Product datasheet for **RG201509**

### BRCC45 (BRE) (NM\_199194) Human Tagged ORF Clone

#### Product data:

Product Type:	Expression Plasmids
Product Name:	BRCC45 (BRE) (NM_199194) Human Tagged ORF Clone
Tag:	TurboGFP
Symbol:	BABAM2
Synonyms:	BRCC4; BRCC45; BRE
Mammalian Cell Selection:	Neomycin
Vector:	pCMV6-AC-GFP (PS100010)
E. coli Selection:	Ampicillin (100 ug/mL)
ORF Nucleotide Sequence:	>RG201509 representing NM_199194 Red=Cloning site Blue=ORF Green=Tags(s)

TTTTGTAATACGACTCACTATAGGGCGCCGGGAATTCGTCGACTGGATCCGGTACCGAGGAGATCTGCC  
GCC**CGATCGCC**

ATGTCCCAGAAGTGGCCTTGAACCGAATATCTCCAATGCTCTCCCCTTTCATATCTAGCGTGGTCCGGA  
ATGGAAAAGTGGGACTGGATGCTACAACTGTTTGAGGATAACTGACTTAAAATCTGGCTGCACATCATT  
GACTCTGGGCCCAACTGTGACCGATTTAACTGCACATACCATATGCTGGAGAGACATTAAGTGGGAT  
ATCATTTTCAATGCCAATACCCAGAAGTGCCTCCGATTTTATCTTTGGAGAAGATGCTGAATTCCTGCT  
CAGACCCCTCAGCTTTGCAGAATCTTGCTCCTGGAATCCTTCAAATCCTGAATGTCTTACTTGTGGT  
GAAGGAACCTGTGCAACAATATACCAATTCGAATGTAGCCGCTCCGGGAGAGCTCCCGCCTCATGTTT  
GAATACCAGACATTACTGGAGGACACAGTATGGAGAGAACATGGAAATTTATGCTGGGAAAAAACA  
ACTGGACTGGTGAATTTTCAGCTCGTTTCTTTTGAAGCTGCCCGTAGATTTTCAGCAATATCCCCACATA  
CCTTCTCAAGGATGTAATGAAGACCCTGGAGAAGATGTGGCCCTCCTCTCTGTTAGTTTGGAGCACT  
GAAGCCACCCAGGTGTACCCAGCTGTACTTGTACCTCGAATTGAGCATGCACCTGGAGGCTCCTCAG  
CTCTTCATATCCAGCTTTTCCAGGAGGAGGATGTCTCATTGATTACGTTCCCTCAAGTATGCCACCTGCT  
CACCAACAAGGTGCAGTACGTGATTCAAGGGTATCACAAAAGAAGAGAGTATATTGCTGCTTTTCTCAGT  
CACTTTGGCACAGGTGCTGGAATATGATGCAGAAGGCTTTACAAAACACTCACTGCTGATGTGGA  
AAGATTTTGTCTTGTACACATTGACCTGCCTCTGTTTTTCCCTCGAGACCAGCCAACCTCACATT  
TCAGTCCGTTTATCACTTTACCAACAGTGGACAGCTTTACTCCAGGCCAAAAAATTATCCGTACAGC  
CCCAGATGGGATGAAATGAAATGGCCAAAAGAGCAAAGGCTTATTTCAAACCTTTGTCCCTCAGTTCC  
AGGAGGCAGCATTTGCCAATGAAAGCTC

**ACGCGT**ACGCGGCCGCTCGAG - GFP Tag - GTTTAA



[View online »](#)

**Protein Sequence:** >RG201509 representing NM\_199194  
 Red=Cloning site Green=Tags(s)

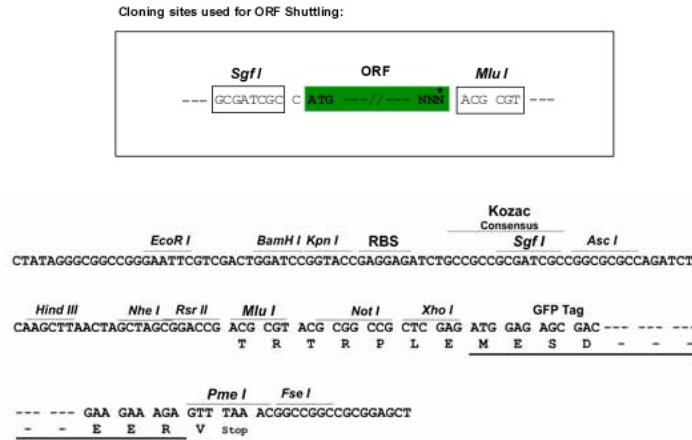
MSPEVALNRISPMLSPFISSVVRNGKVGLDATNCLRITDLKSGCTSLTPGPNCDRFKLHIPPYAGETLKWD  
 IIFNAQYPELPPDFIFGEDAEFLPDPALQNLASWNPSNPECLLLVVKELVQYHQFQCSRLRESSRLMF  
 EYQTLLEEPQYGENMEIYAGKKNWTGEFSARFLKLPVDFSNIPTYLLKDVNEDPGEDVALLSVSFEDT  
 EATQVYPKLYLSPRIEHALGGSSALHIPAFPPGGCLIDYVVPQVCHLLTNKVQYVIQGYHKRREYIAAFLS  
 HFGTGVVEYDAEGFTKLTLLLMWKDFCFLVHIDLPLFFPRDQPTLTFQSVYHFTNSGQLYSQAQKNYPYS  
 PRWDGNEMAKRAKAYFKTFVPQFQEAFAANGKL

TRTRPLE - GFP Tag - V

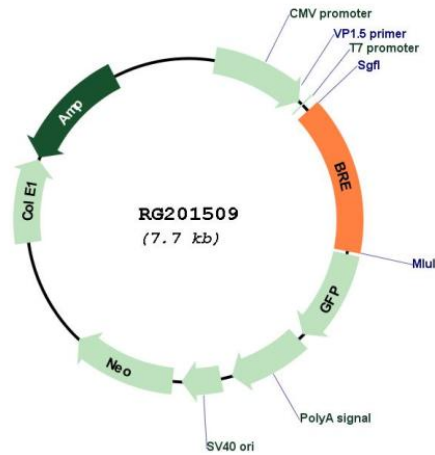
**Restriction Sites:**

SgfI-MluI

**Cloning Scheme:**



**Plasmid Map:**



**ACCN:**

NM\_199194

<b>ORF Size:</b>	1149 bp
<b>OTI Disclaimer:</b>	The molecular sequence of this clone aligns with the gene accession number as a point of reference only. However, individual transcript sequences of the same gene can differ through naturally occurring variations (e.g. polymorphisms), each with its own valid existence. This clone is substantially in agreement with the reference, but a complete review of all prevailing variants is recommended prior to use. <a href="#">More info</a>
<b>OTI Annotation:</b>	This clone was engineered to express the complete ORF with an expression tag. Expression varies depending on the nature of the gene.
<b>Components:</b>	The ORF clone is ion-exchange column purified and shipped in a 2D barcoded Matrix tube containing 10ug of transfection-ready, dried plasmid DNA (reconstitute with 100 ul of water).
<b>Reconstitution Method:</b>	<ol style="list-style-type: none"><li>1. Centrifuge at 5,000xg for 5min.</li><li>2. Carefully open the tube and add 100ul of sterile water to dissolve the DNA.</li><li>3. Close the tube and incubate for 10 minutes at room temperature.</li><li>4. Briefly vortex the tube and then do a quick spin (less than 5000xg) to concentrate the liquid at the bottom.</li><li>5. Store the suspended plasmid at -20°C. The DNA is stable for at least one year from date of shipping when stored at -20°C.</li></ol>
<b>RefSeq:</b>	<a href="#">NM_199194.2</a>
<b>RefSeq Size:</b>	1860 bp
<b>RefSeq ORF:</b>	1152 bp
<b>Locus ID:</b>	9577
<b>UniProt ID:</b>	<a href="#">Q9NXR7</a>
<b>Cytogenetics:</b>	2p23.2
<b>Protein Families:</b>	Druggable Genome
<b>Gene Summary:</b>	This gene encodes an anti-apoptotic, death receptor-associated protein that interacts with tumor necrosis factor-receptor-1. The encoded protein acts as an adapter in several protein complexes, including the BRCA1-A complex and the BRISC complex. The BRCA1-A complex possesses ubiquitinase activity and targets sites of double strand DNA breaks, while the BRISC complex exhibits deubiquitinase activity and is involved in mitotic spindle assembly. This gene is upregulated in several types of cancer. [provided by RefSeq, Jun 2016]